

RC-09S1N12K0K5 - Cable connector



1596115

<https://www.phoenixcontact.com/us/products/1596115>

Please be informed that the data shown in this PDF document is generated from our online catalog. Please find the complete data in the user documentation. Our general terms of use for downloads are valid.



M23, Cable connector, series: RC, straight plastic-sheathed, shielded: yes, Screw locking mechanism, No. of pos.: 8+1, Direction of rotation: Standard, contact connection type: Socket, Solder cup, coding: N

Commercial data

Item number	1596115
Packing unit	20 pc
Minimum order quantity	1 pc
Note	Made to order (non-returnable)
Product key	ABRAFA
GTIN	4046356209854
Weight per piece (including packing)	41.87 g
Weight per piece (excluding packing)	38.67 g
Country of origin	DE

RC-09S1N12K0K5 - Cable connector



1596115

<https://www.phoenixcontact.com/us/products/1596115>

Technical data

Product properties

Product type	Circular connector (cable-side)
--------------	---------------------------------

Connector

Insulating body

Coding	N
Contact material	CuZn
Contact surface material	Ni/Au
Insertion/withdrawal cycles	50
Connection method	Solder cup
Contact switching type	Socket
Application	Signal
Number of positions	9
Direction of rotation	Standard
Connection profile	8+1
Number Contact (Contact group 1)	1
Diameter Contact (Contact group 1)	2 mm
Litz wire cross-section min. Contact (Contact group 1)	0.08 mm ²
Litz wire cross-section max. Contact (Contact group 1)	2.5 mm ²
Rated current Contact (Contact group 1)	20 A (for max. connection cross section)
Rated voltage Contact (Contact group 1)	48 V AC
	74 V DC
Rated surge voltage	1.5 kV
Overvoltage category	III
Degree of pollution	3
Number Contact	8
Diameter Contact	1 mm
Litz wire cross-section min. Contact	0.08 mm ²
Litz wire cross-section max. Contact	1 mm ²
Nominal current per signal contact	8 A
Rated voltage Contact	48 V AC
	74 V DC

Housing

Thread type	M23
Type of locking	Screw locking mechanism
Pg screw connection	none
Housing material	GD-Zn
Degree of protection (plugged in)	IP67

RC-09S1N12K0K5 - Cable connector

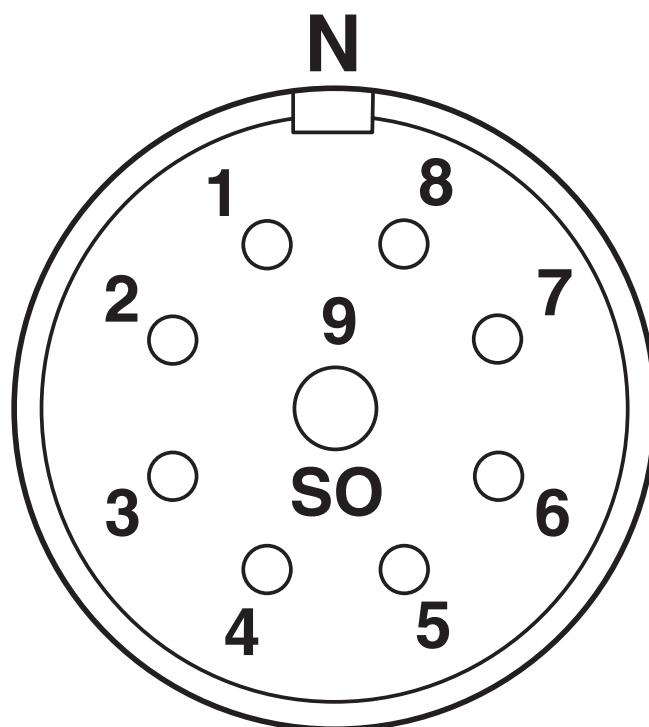
1596115

<https://www.phoenixcontact.com/us/products/1596115>



Drawings

Schematic diagram



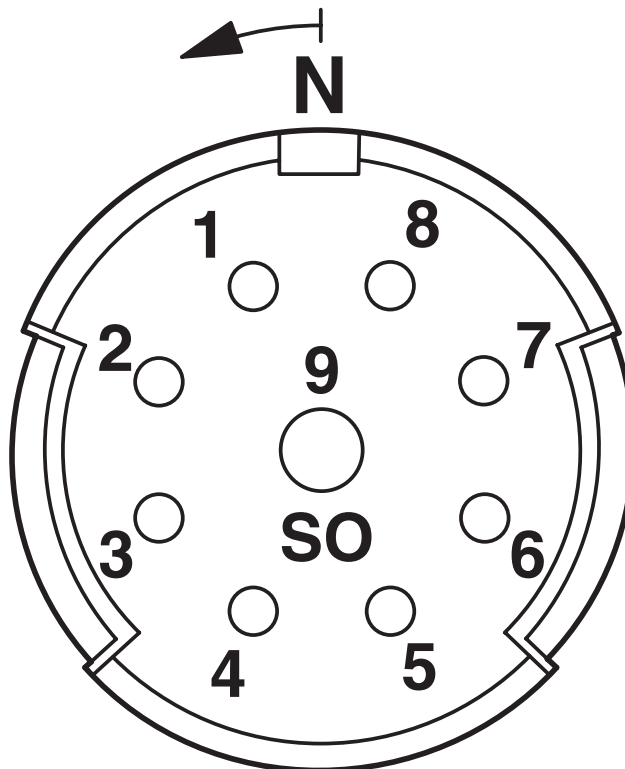
Connector pin assignment

RC-09S1N12K0K5 - Cable connector

1596115

<https://www.phoenixcontact.com/us/products/1596115>

Schematic diagram



Connector pin assignment

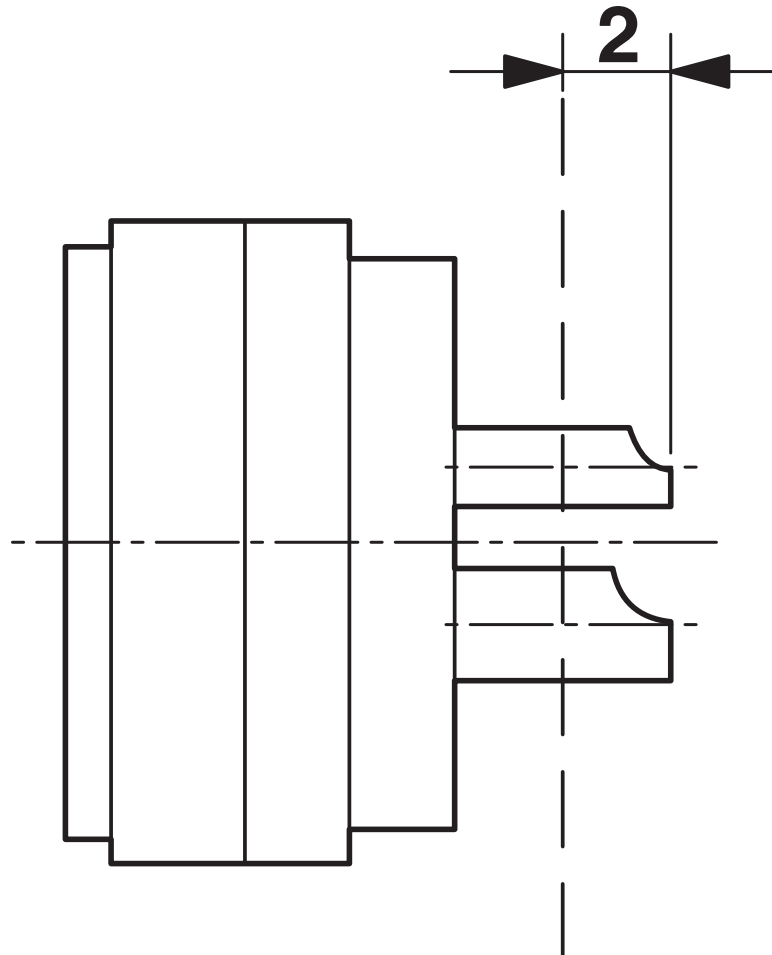
RC-09S1N12K0K5 - Cable connector



1596115

<https://www.phoenixcontact.com/us/products/1596115>

Schematic diagram



Dimensional drawing

Phoenix Contact 2025 © - all rights reserved
<https://www.phoenixcontact.com>

Phoenix Contact USA
586 Fulling Mill Road
Middletown, PA 17057, United States
(+717) 944-1300
info@phoenixcon.com