

1595816

<https://www.phoenixcontact.com/us/products/1595816>

Please be informed that the data shown in this PDF document is generated from our online catalog. Please find the complete data in the user documentation. Our general terms of use for downloads are valid.



M23, Device connector front mounting, series: RC, straight, shielded: yes, Screw locking mechanism, No. of pos.: 8+1, Direction of rotation: Standard, contact connection type: Socket, Solder cup, Flat gasket, coding: N

Commercial data

Item number	1595816
Packing unit	40 pc
Minimum order quantity	1 pc
Note	Made to order (non-returnable)
Product key	ABRAFL
GTIN	4046356208406
Weight per piece (including packing)	37.4 g
Weight per piece (excluding packing)	29.38 g
Country of origin	DE

# RC-09S1N122000 - Device connector front mounting



1595816

<https://www.phoenixcontact.com/us/products/1595816>

## Technical data

### Product properties

Product type	Circular connectors (device side)
--------------	-----------------------------------

### Connector

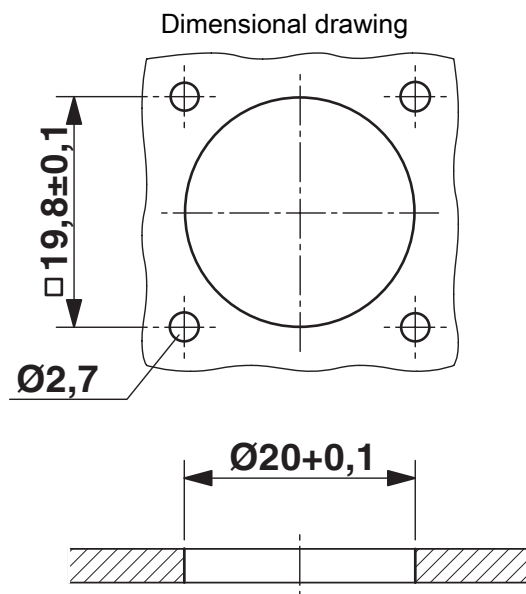
#### Insulating body

Coding	N
Contact material	CuZn
Contact surface material	Ni/Au
Insertion/withdrawal cycles	50
Connection method	Solder cup
Contact switching type	Socket
Application	Signal
Number of positions	9
Direction of rotation	Standard
Connection profile	8+1
Number Contact (Contact group 1)	1
Diameter Contact (Contact group 1)	2 mm
Litz wire cross-section min. Contact (Contact group 1)	0.08 mm <sup>2</sup>
Litz wire cross-section max. Contact (Contact group 1)	2.5 mm <sup>2</sup>
Rated current Contact (Contact group 1)	20 A (for max. connection cross section)
Rated voltage Contact (Contact group 1)	48 V AC
	74 V DC
Rated surge voltage	1.5 kV
Overvoltage category	III
Degree of pollution	3
Number Contact	8
Diameter Contact	1 mm
Litz wire cross-section min. Contact	0.08 mm <sup>2</sup>
Litz wire cross-section max. Contact	1 mm <sup>2</sup>
Nominal current per signal contact	8 A
Rated voltage Contact	48 V AC
	74 V DC

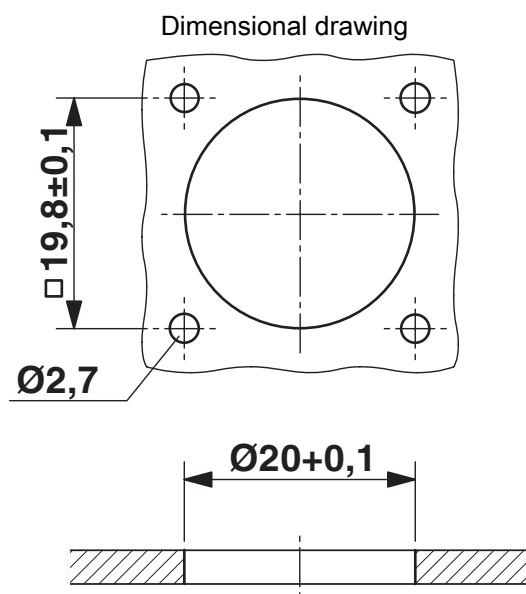
#### Housing

Thread type	M23
Type of locking	Screw locking mechanism
Pg screw connection	none
Housing material	Metal
Degree of protection (plugged in)	IP67

## Drawings

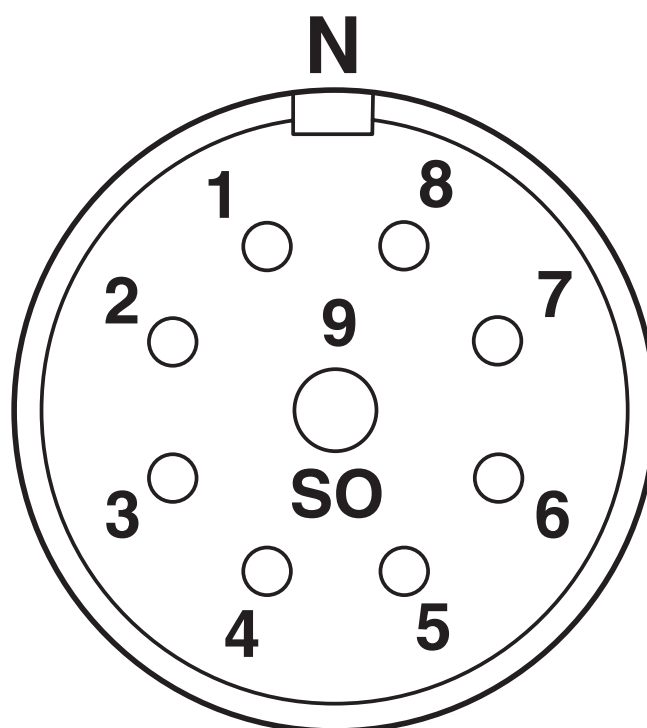


## Installation dimensions



## Installation dimensions

Schematic diagram

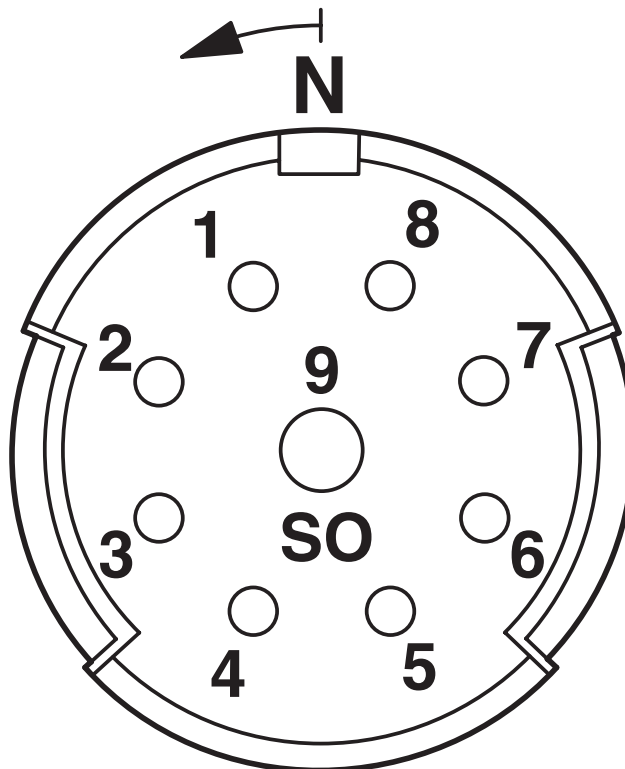


Connector pin assignment

1595816

<https://www.phoenixcontact.com/us/products/1595816>

Schematic diagram

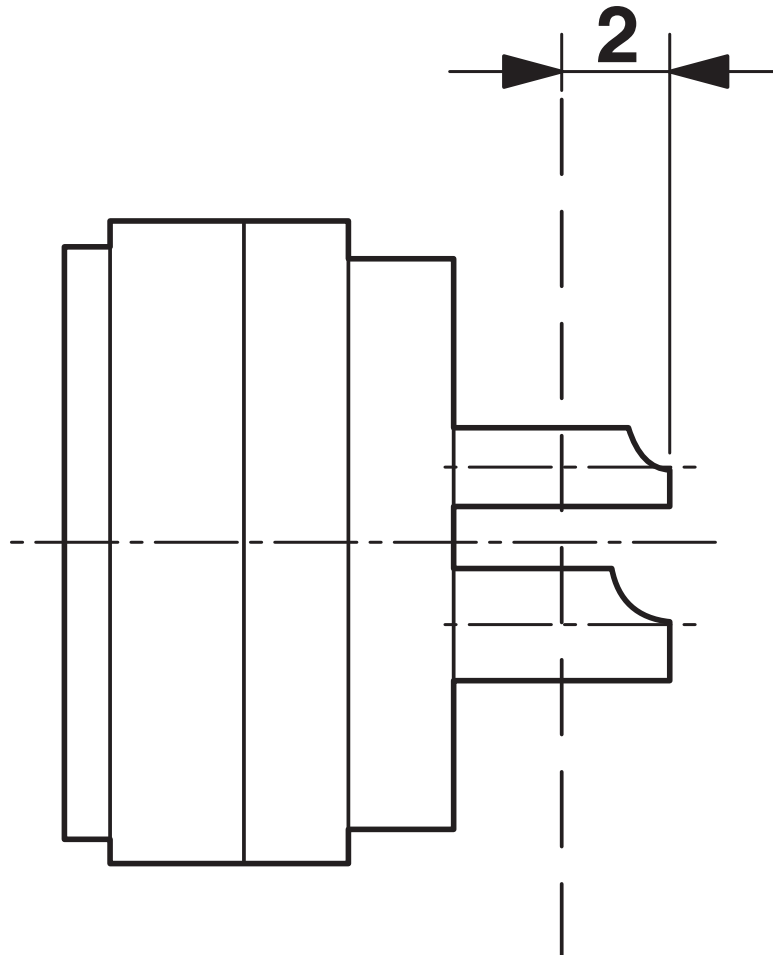


Connector pin assignment

1595816

<https://www.phoenixcontact.com/us/products/1595816>

Schematic diagram



Dimensional drawing

# RC-09S1N122000 - Device connector front mounting



1595816

<https://www.phoenixcontact.com/us/products/1595816>

## Classifications

### ETIM

ETIM 8.0	EC002635
----------	----------

### UNSPSC

UNSPSC 21.0	39121400
-------------	----------

1595816

<https://www.phoenixcontact.com/us/products/1595816>

## Environmental product compliance

### EU RoHS

Fulfills EU RoHS substance requirements	Yes
Exemption	6(c)

### China RoHS

Environment friendly use period (EFUP)	EFUP-50
	An article-related China RoHS declaration table can be found in the download area for the respective article under "Manufacturer declaration". For all articles with EFUP-E, no China RoHS declaration table issued and required.

### EU REACH SVHC

REACH candidate substance (CAS No.)	Lead(CAS: 7439-92-1)
-------------------------------------	----------------------

Phoenix Contact 2025 © - all rights reserved  
<https://www.phoenixcontact.com>

Phoenix Contact USA  
586 Fulling Mill Road  
Middletown, PA 17057, United States  
(+717) 944-1300  
[info@phoenixcon.com](mailto:info@phoenixcon.com)