

RC-07P1N121500 - Cable connector



1594269

<https://www.phoenixcontact.com/us/products/1594269>

Please be informed that the data shown in this PDF document is generated from our online catalog. Please find the complete data in the user documentation. Our general terms of use for downloads are valid.



M23, Cable connector, series: RC, straight, shielded: no, Screw locking mechanism, No. of pos.: 7, Direction of rotation: Standard, contact connection type: Pin, Solder cup, coding: N, this item is expected to be lead-free from Q4 2025 in accordance with RoHS II without exception 6c (Pb < 0.1%), a lead-free alternative is possible on request in advance

Commercial data

Item number	1594269
Packing unit	20 pc
Minimum order quantity	1 pc
Sales key	AB31
Product key	ABRAFA
GTIN	4046356200486
Weight per piece (including packing)	85.98 g
Weight per piece (excluding packing)	81.11 g
Customs tariff number	85366990
Country of origin	DE

RC-07P1N121500 - Cable connector



1594269

<https://www.phoenixcontact.com/us/products/1594269>

Technical data

Product properties

Product type	Circular connector (cable-side)
--------------	---------------------------------

Connector

Insulating body

Coding	N
Contact material	CuZn
Contact surface material	Ni/Au
Insertion/withdrawal cycles	50
Connection method	Solder cup
Contact switching type	Pin
Application	Signal
Number of positions	7
Direction of rotation	Standard
Connection profile	7
Number Contact (Contact group 1)	7
Diameter Contact (Contact group 1)	2 mm
Litz wire cross-section min. Contact (Contact group 1)	0.08 mm ²
Litz wire cross-section max. Contact (Contact group 1)	2.5 mm ²
Rated current Contact (Contact group 1)	20 A (for max. connection cross section)
Rated voltage Contact (Contact group 1)	48 V AC
	74 V DC
Rated surge voltage	1.5 kV
Overvoltage category	III
Degree of pollution	3

Housing

Thread type	M23
Type of locking	Screw locking mechanism
Pg screw connection	Pg9
Housing material	GD-Zn
Degree of protection (plugged in)	IP65
	IP67
	IP68

RC-07P1N121500 - Cable connector

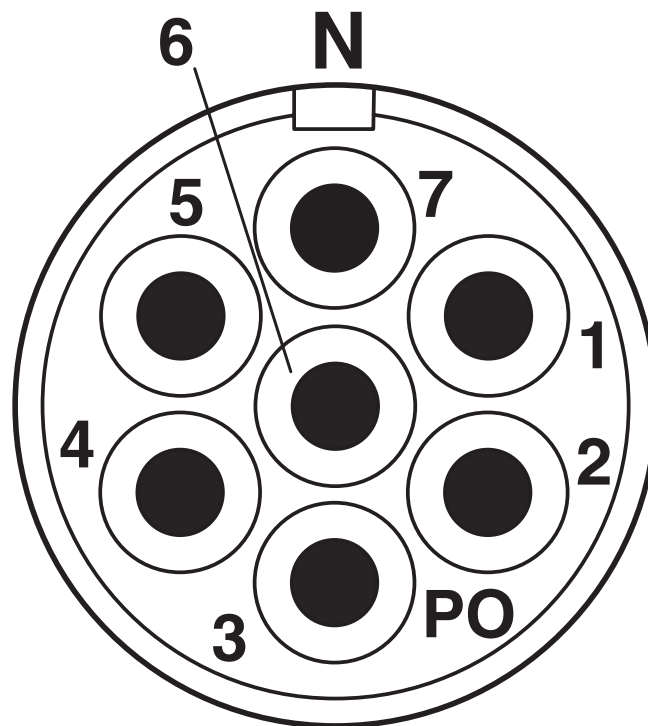
1594269

<https://www.phoenixcontact.com/us/products/1594269>



Drawings

Schematic diagram



Connector pin assignment

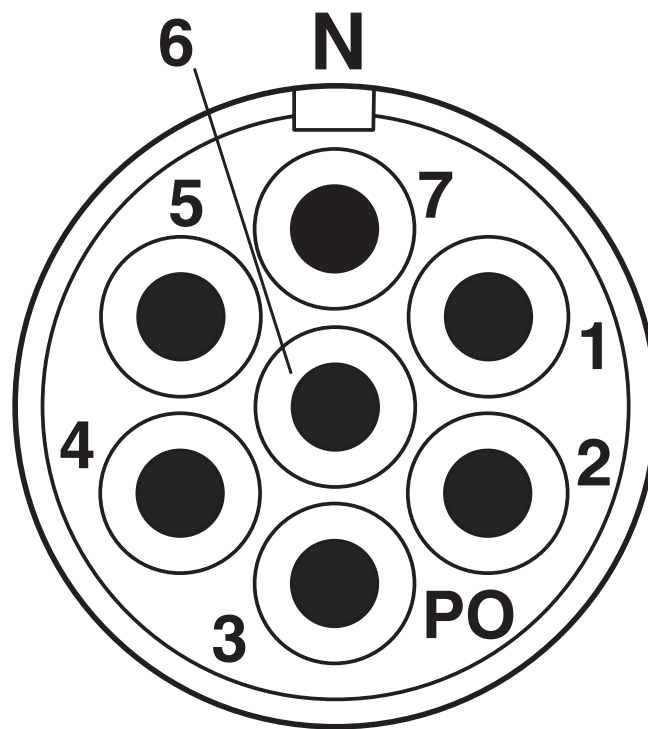
RC-07P1N121500 - Cable connector

1594269

<https://www.phoenixcontact.com/us/products/1594269>



Schematic diagram



Connector pin assignment

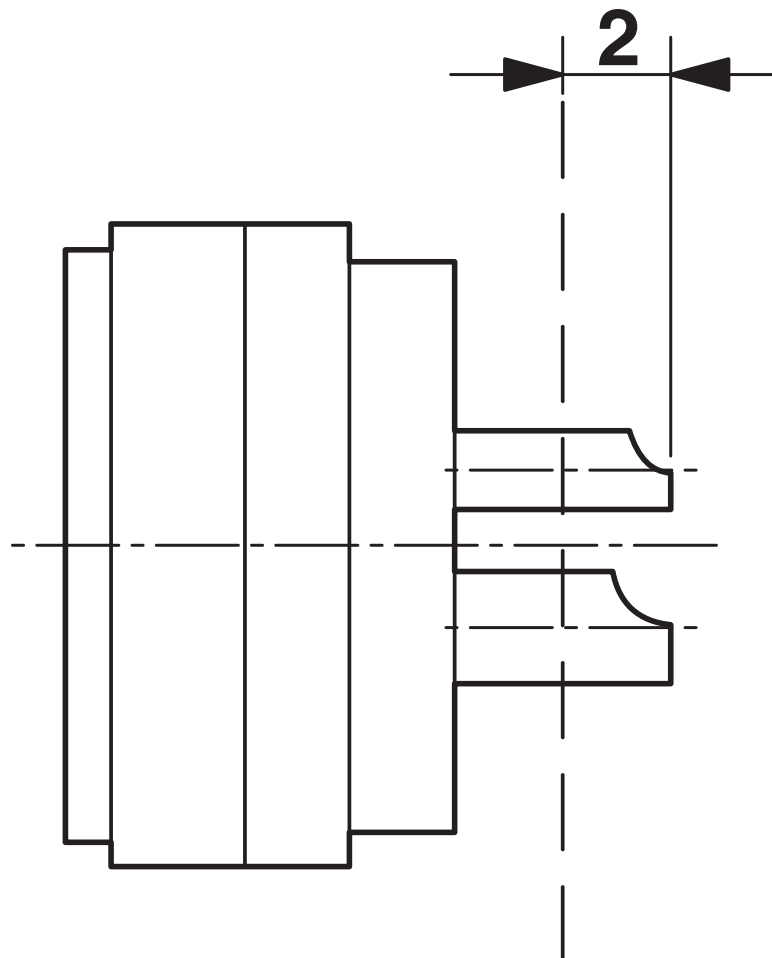
RC-07P1N121500 - Cable connector

1594269

<https://www.phoenixcontact.com/us/products/1594269>



Schematic diagram



Dimensional drawing

RC-07P1N121500 - Cable connector



1594269

<https://www.phoenixcontact.com/us/products/1594269>

Classifications

ECLASS

ECLASS-13.0	27440116
-------------	----------

ETIM

ETIM 9.0	EC002635
----------	----------

UNSPSC

UNSPSC 21.0	39121400
-------------	----------

RC-07P1N121500 - Cable connector



1594269

<https://www.phoenixcontact.com/us/products/1594269>

Environmental product compliance

EU RoHS

Fulfills EU RoHS substance requirements	Yes
Exemption	6(c)

China RoHS

Environment friendly use period (EFUP)	EFUP-50
	An article-related China RoHS declaration table can be found in the download area for the respective article under "Manufacturer declaration". For all articles with EFUP-E, no China RoHS declaration table issued and required.

EU REACH SVHC

REACH candidate substance (CAS No.)	Lead(CAS: 7439-92-1)
SCIP	e336fa48-6607-4e10-8b59-aad5369e6ce0

Phoenix Contact 2025 © - all rights reserved

<https://www.phoenixcontact.com>

Phoenix Contact USA
586 Fulling Mill Road
Middletown, PA 17057, United States
(+717) 944-1300
info@phoenixcon.com