

RC-07P1N120000 - Contact insert

1594263

<https://www.phoenixcontact.com/us/products/1594263>



Please be informed that the data shown in this PDF document is generated from our online catalog. Please find the complete data in the user documentation. Our general terms of use for downloads are valid.



Contact insert, M23, number of positions: 7, contact connection type: Pin, Solder cup, series: NC, RC, RM, TU, UC, this item is expected to be lead-free from Q3 2025 in accordance with RoHS II without exception 6c (Pb < 0.1%), a lead-free alternative is possible on request in advance

Commercial data

| | |
|--------------------------------------|---------------|
| Item number | 1594263 |
| Packing unit | 10 pc |
| Minimum order quantity | 1 pc |
| Sales key | AB31 |
| Product key | ABRAFU |
| GTIN | 4046356200431 |
| Weight per piece (including packing) | 11 g |
| Weight per piece (excluding packing) | 8.25 g |
| Customs tariff number | 85366990 |
| Country of origin | DE |

RC-07P1N120000 - Contact insert

1594263

<https://www.phoenixcontact.com/us/products/1594263>



Technical data

Product properties

| | |
|---------------------|----------------|
| Product type | Contact insert |
| Series | NC |
| | RC |
| | RM |
| | TU |
| | UC |
| Application | Signal |
| Number of positions | 7 |
| Connection profile | 7 |
| Coding | N |
| Thread type | M23 |

Electrical properties

Contact

| | |
|--------------------------------|----------------------|
| Contact diameter | 2 mm |
| Min. cross section | 0.08 mm ² |
| Max. cross section | 2.5 mm ² |
| Nominal voltage U _N | 48 V AC |
| | 74 V DC |
| Overvoltage category | III |
| Degree of pollution | 3 |
| Rated surge voltage | 1.5 kV |

Connection data

| | |
|-------------------|------------|
| Connection method | Solder cup |
|-------------------|------------|

Material specifications

| | |
|--------------------------|-----------------------------|
| Contact material | CuZn |
| Contact surface material | Ni/Au |
| Contact surface | Nickel-plated, gold coating |
| Insulation body material | PBT |

Connector

| | |
|-----------------------|----------|
| Direction of rotation | Standard |
|-----------------------|----------|

Mechanical properties

Mechanical data

| | |
|-----------------------------|----|
| Insertion/withdrawal cycles | 50 |
|-----------------------------|----|

RC-07P1N120000 - Contact insert

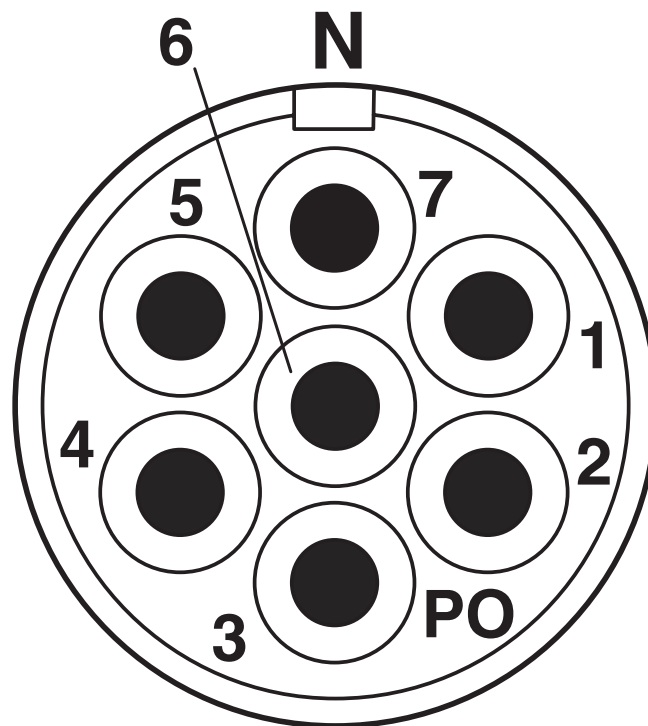
1594263

<https://www.phoenixcontact.com/us/products/1594263>



Drawings

Schematic diagram



Connector pin assignment

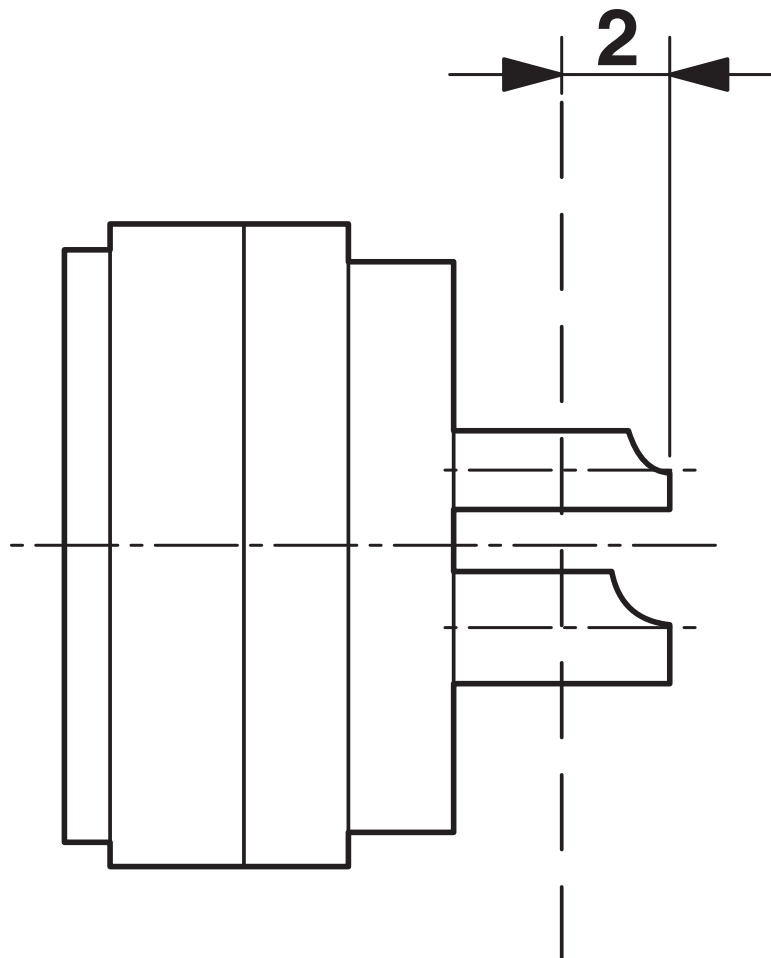
RC-07P1N120000 - Contact insert

1594263

<https://www.phoenixcontact.com/us/products/1594263>



Schematic diagram



Dimensional drawing

RC-07P1N120000 - Contact insert



1594263

<https://www.phoenixcontact.com/us/products/1594263>

Classifications

ECLASS

| | |
|-------------|----------|
| ECLASS-13.0 | 27440223 |
|-------------|----------|

ETIM

| | |
|----------|----------|
| ETIM 9.0 | EC003557 |
|----------|----------|

UNSPSC

| | |
|-------------|----------|
| UNSPSC 21.0 | 39121400 |
|-------------|----------|

RC-07P1N120000 - Contact insert



1594263

<https://www.phoenixcontact.com/us/products/1594263>

Environmental product compliance

EU RoHS

| | |
|---|------|
| Fulfills EU RoHS substance requirements | Yes |
| Exemption | 6(c) |

China RoHS

| | |
|--|---|
| Environment friendly use period (EFUP) | EFUP-50 |
| | An article-related China RoHS declaration table can be found in the download area for the respective article under "Manufacturer declaration". For all articles with EFUP-E, no China RoHS declaration table issued and required. |

EU REACH SVHC

| | |
|-------------------------------------|--------------------------------------|
| REACH candidate substance (CAS No.) | Lead(CAS: 7439-92-1) |
| SCIP | 8f186788-1104-43b6-bd99-59b713f6eaf4 |

Phoenix Contact 2025 © - all rights reserved

<https://www.phoenixcontact.com>

Phoenix Contact USA
586 Fulling Mill Road
Middletown, PA 17057, United States
(+717) 944-1300
info@phoenixcon.com