

# PRC 20/5-C2-FT25-FS2,5 - Device connector front mounting



1308656

<https://www.phoenixcontact.com/us/products/1308656>

Please be informed that the data shown in this PDF document is generated from our online catalog. Please find the complete data in the user documentation. Our general terms of use for downloads are valid.

---



Device connector front mounting, Range of articles: PRC 20, color: black, number of positions: 5, min. conductor cross section: 0.5 mm<sup>2</sup>, max. conductor cross section: 2.5 mm<sup>2</sup>, rated voltage: 400 V, rated current: 20 A, Connection method: Screw connection, Contact connection type: Socket, Setting option for release: 1. with a tool or 2. by hand, scope: SIGNAL

---

## Your advantages

- More space on the device front with current transmission up to 20 A in a minimum amount of space
- Duo-Unlock technology for greater flexibility during installation and maintenance
- Reliable use under extreme ambient conditions with high degrees of protection and impact resistance
- Simple handling with proven crimp or screw connection technology
- Mechanical and color coding for quick and error-free startup

# PRC 20/5-C2-FT25-FS2,5 - Device connector front mounting

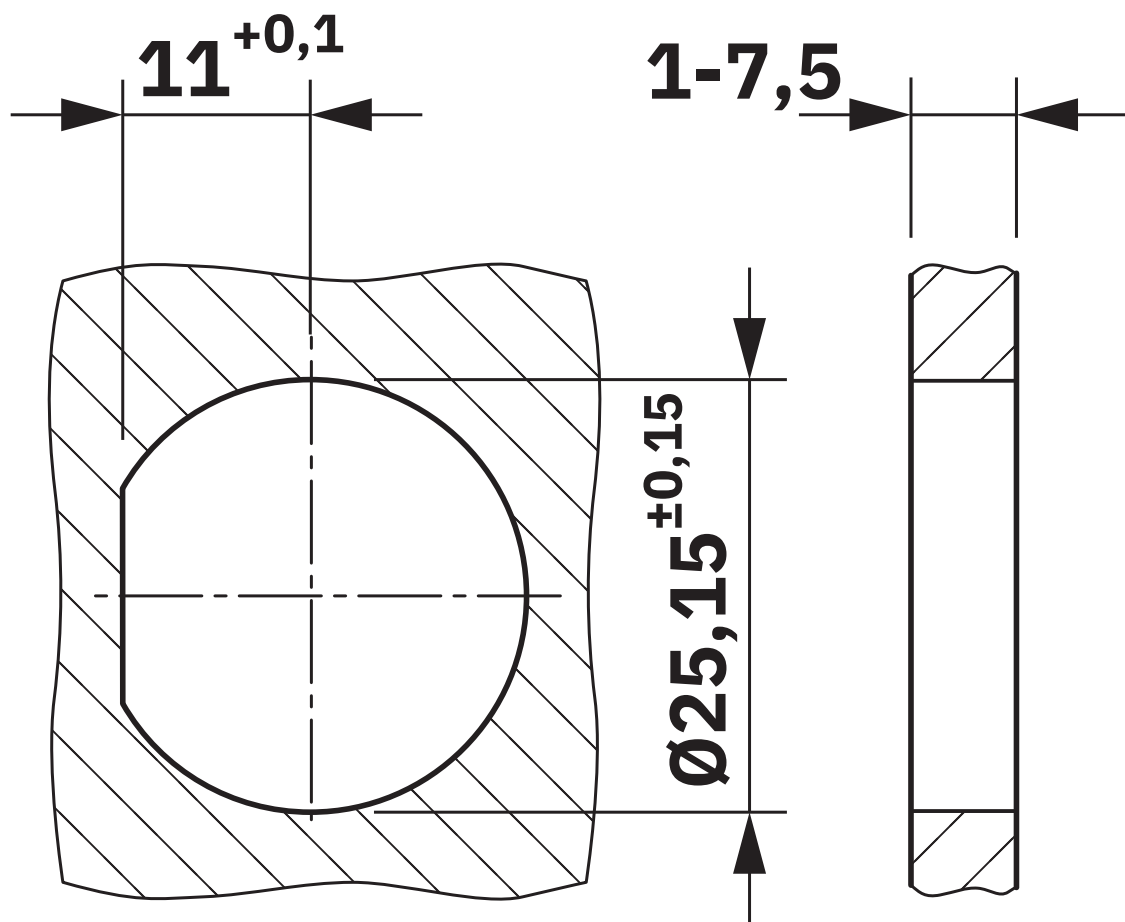


1308656

<https://www.phoenixcontact.com/us/products/1308656>

## Drawings

Dimensional drawing

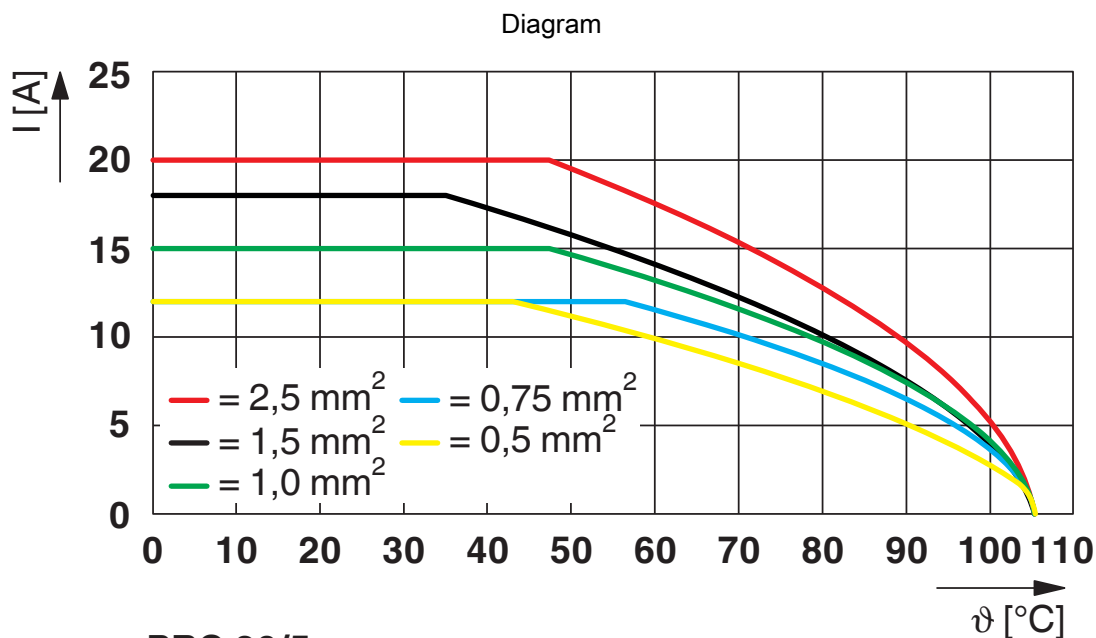


# PRC 20/5-C2-FT25-FS2,5 - Device connector front mounting

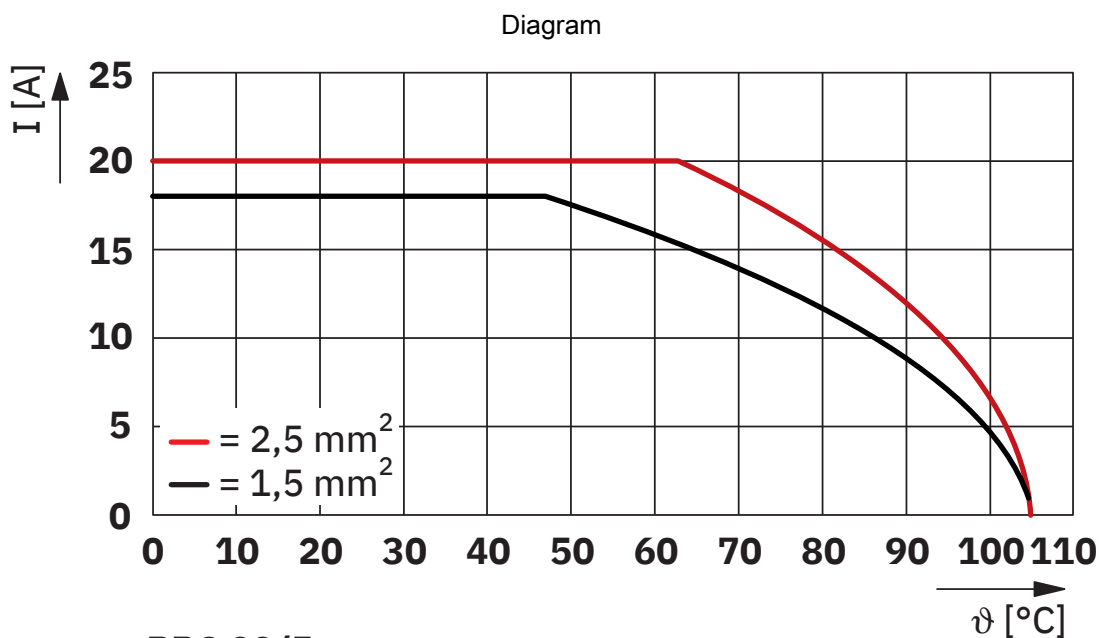


1308656

<https://www.phoenixcontact.com/us/products/1308656>



Derating



Derating

# PRC 20/5-C2-FT25-FS2,5 - Device connector front mounting



1308656

<https://www.phoenixcontact.com/us/products/1308656>

Phoenix Contact 2025 © - all rights reserved  
<https://www.phoenixcontact.com>

Phoenix Contact USA  
586 Fulling Mill Road  
Middletown, PA 17057, United States  
(+717) 944-1300  
[info@phoenixcon.com](mailto:info@phoenixcon.com)