

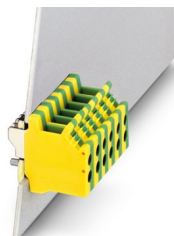
DFK 4-PE - PE panel panel feed-through terminal block



0708315

<https://www.phoenixcontact.com/us/products/0708315>

Please be informed that the data shown in this PDF document is generated from our online catalog. Please find the complete data in the user documentation. Our general terms of use for downloads are valid.



Panel feed-through terminal block, connection method: Screw connection with tension sleeve, number of positions: 1, load current: 18 A, cross section: 0.2 mm² - 6 mm², connection direction of the conductor to plug-in direction: 90 °, width: 6.1 mm, color: green-yellow

Your advantages

- Well-known connection principle allows worldwide use
- Low temperature rise, thanks to maximum contact force
- Allows connection of two conductors
- PE terminal block with grounding function based on IEC 60947-7-2

Commercial data

Item number	0708315
Packing unit	50 pc
Minimum order quantity	50 pc
Sales key	AA28
Product key	AA1ABD
GTIN	4017918004590
Weight per piece (including packing)	7.828 g
Weight per piece (excluding packing)	7.931 g
Customs tariff number	85369010
Country of origin	BG

DFK 4-PE - PE panel panel feed-through terminal block



0708315

<https://www.phoenixcontact.com/us/products/0708315>

Technical data

Product properties

Product type	Panel feed-through terminal block
Product family	DFK 4-PE
Number of positions	1
Pitch	6 mm
Number of connections	2
Number of rows	1
Number of potentials	1

Insulation characteristics

Overvoltage category	III
Degree of pollution	3

Electrical properties

Properties

Nominal current I_N	17.5 A
Nominal voltage U_N	400 V
Rated voltage (III/3)	400 V
Rated surge voltage (III/3)	4 kV

Connection data

Connection technology

Nominal cross section	4 mm ²
-----------------------	-------------------

Conductor connection exterior

Connection method	Screw connection with tension sleeve
Connection direction of the conductor to plug-in direction	90 °
Conductor cross section rigid	0.2 mm ² ... 6 mm ²
Conductor cross section flexible	0.2 mm ² ... 4 mm ²
Conductor cross section flexible, with ferrule without plastic sleeve	0.25 mm ² ... 4 mm ²
Conductor cross section, flexible, with ferrule, with plastic sleeve	0.25 mm ² ... 2.5 mm ²
2 conductors with same cross section, solid	0.2 mm ² ... 1.5 mm ²
2 conductors with same cross section, flexible	0.2 mm ² ... 1.5 mm ²
2 conductors with same cross section, flexible, with ferrule without plastic sleeve	0.25 mm ² ... 1.5 mm ²
2 conductors with the same cross section, flexible, with TWIN ferrule with plastic sleeve	0.5 mm ² ... 2.5 mm ²
Internal cylindrical gage	A4
Stripping length	8 mm
Tightening torque	0.6 Nm ... 0.8 Nm

DFK 4-PE - PE panel panel feed-through terminal block

0708315

<https://www.phoenixcontact.com/us/products/0708315>

Material specifications

Material data - contact

Note	WEEE/RoHS-compliant, free of whiskers according to IEC 60068-2-82/JEDEC JESD 201
Contact material	Cu alloy
Surface characteristics	tin-plated

Material data - housing

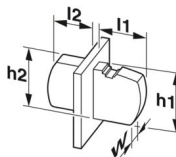
Color (Housing)	green-yellow ()
Insulating material	PA
Insulating material group	I
CTI according to IEC 60112	600
Flammability rating according to UL 94	V2

Notes

Safety note

Safety note	<ul style="list-style-type: none">• Only electrically qualified personnel may install and operate the product. To recognize and prevent danger, the qualified personnel must be familiar with the basics of electrical engineering.• Observe the technical data provided here and refer to the documents listed under "Downloads". The download area contains important information, such as installation notes, technical drawings, and 3D data.
-------------	------------------------------------------------------------------------------------------------------------------------------------------------------------------------------------------------------------------------------------------------------------------------------------------------------------------------------------------------------------------------------------------------------------------------------------------------------------------------------

Dimensions

Dimensional drawing	
Pitch	6 mm
Width [w]	6.1 mm
Height [h]	24.7 mm
Length [l]	29 mm

Electrical tests

Air clearances and creepage distances | 1. Insulation coordination

Insulating material group	I
Rated insulation voltage (III/3)	400 V
Rated surge voltage (III/3)	4 kV

Packaging specifications

Type of packaging	packed in cardboard
-------------------	---------------------

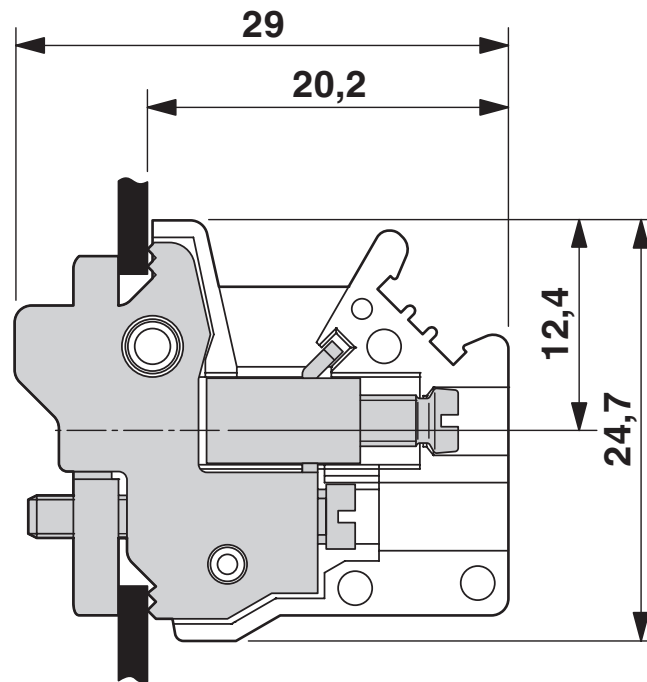
DFK 4-PE - PE panel panel feed-through terminal block

0708315

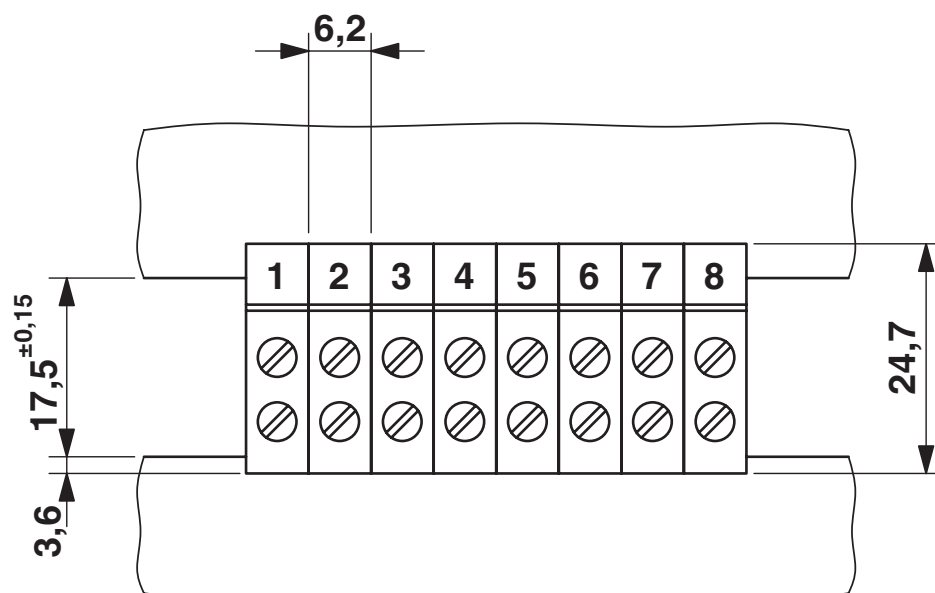
<https://www.phoenixcontact.com/us/products/0708315>

Drawings

Dimensional drawing



Dimensional drawing



DFK 4-PE - PE panel panel feed-through terminal block





0708315

<https://www.phoenixcontact.com/us/products/0708315>

Approvals

To download certificates, visit the product detail page: <https://www.phoenixcontact.com/us/products/0708315>

 CSA Approval ID: 13631				
	Nominal voltage U_N	Nominal current I_N	Cross section AWG	Cross section mm^2
Use group B	-	-	26 - 10	-
Use group D	-	-	26 - 10	-

 cULus Recognized Approval ID: E60425-19900730				
	Nominal voltage U_N	Nominal current I_N	Cross section AWG	Cross section mm^2
Use group B	-	-	30 - 10	-
Use group D	-	-	30 - 10	-

DFK 4-PE - PE panel panel feed-through terminal block



0708315

<https://www.phoenixcontact.com/us/products/0708315>

Classifications

ECLASS

ECLASS-13.0	27141134
ECLASS-15.0	27141134

ETIM

ETIM 9.0	EC001283
----------	----------

UNSPSC

UNSPSC 21.0	39121400
-------------	----------

DFK 4-PE - PE panel panel feed-through terminal block



0708315

<https://www.phoenixcontact.com/us/products/0708315>

Environmental product compliance

EU RoHS

Fulfills EU RoHS substance requirements	Yes, No exemptions
-----------------------------------------	--------------------

China RoHS

Environment friendly use period (EFUP)	EFUP-E
	No hazardous substances above the limits

EU REACH SVHC

REACH candidate substance (CAS No.)	No substance above 0.1 wt%
-------------------------------------	----------------------------

EF3.0 Climate Change

CO2e kg	0.458 kg CO2e
---------	---------------

Phoenix Contact 2025 © - all rights reserved
<https://www.phoenixcontact.com>

Phoenix Contact USA
586 Fulling Mill Road
Middletown, PA 17057, United States
(+717) 944-1300
info@phoenixcon.com