

Please be informed that the data shown in this PDF document is generated from our online catalog. Please find the complete data in the user documentation. Our general terms of use for downloads are valid.



M23, Front panel feed-through, series: RC, straight, shielded: yes, Screw locking mechanism, No. of pos.: 17, Direction of rotation: Standard, contact connection type: Socket, Crimp connection, Flat gasket, 4x Ø 2.7 mm, Panel thickness min.: 3 mm, Panel thickness max.: 7 mm, cable diameter range: 6.5 mm ... 7.5 mm, coding: N

Commercial data

Item number	1602205
Packing unit	20 pc
Minimum order quantity	1 pc
Note	Made to order (non-returnable)
Product key	ABRAFJ
GTIN	4046356238601
Weight per piece (including packing)	74.63 g
Weight per piece (excluding packing)	74.63 g
Country of origin	DE

RC-17S1N8AB0L8 - Front panel feed-through



1602205

<https://www.phoenixcontact.com/us/products/1602205>

Technical data

Notes

Order information:	Order crimp contacts Ø 1 mm separately
--------------------	--

Product properties

Product type	Circular connector (cable-side)
--------------	---------------------------------

Connector

Insulating body

Note	Order information: Order crimp contacts Ø 1 mm separately
Coding	N
Material (Insulating body)	PA 6.6
Connection method	Crimp connection
Contact switching type	Socket
Application	Signal
Number of positions	17
Direction of rotation	Standard
Connection profile	17
Number Contact (Contact group 1)	17
Diameter Contact (Contact group 1)	1 mm
Rated current Contact (Contact group 1)	8 A (for max. connection cross section)
Rated voltage Contact (Contact group 1)	48 V AC 74 V DC
Rated surge voltage	1.5 kV
Overvoltage category	III
Degree of pollution	3

Housing

Order information:	Order contact inserts and cable clamping/shield accessories separately
Thread type	M23
Design	straight
Type of locking	Screw locking mechanism
Pg screw connection	none
Housing material	Metal
Degree of protection (plugged in)	IP67
Seal for the device	Flat gasket

Seal

External cable diameter	6.5 mm ... 7.5 mm
-------------------------	-------------------

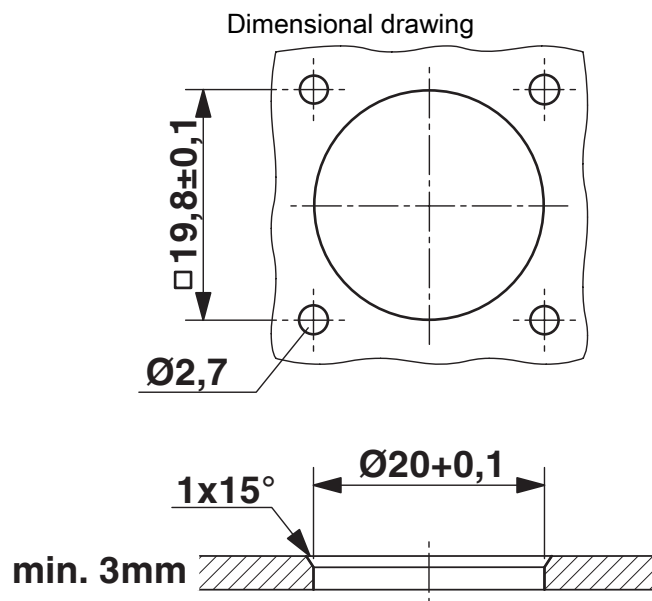
RC-17S1N8AB0L8 - Front panel feed-through

1602205

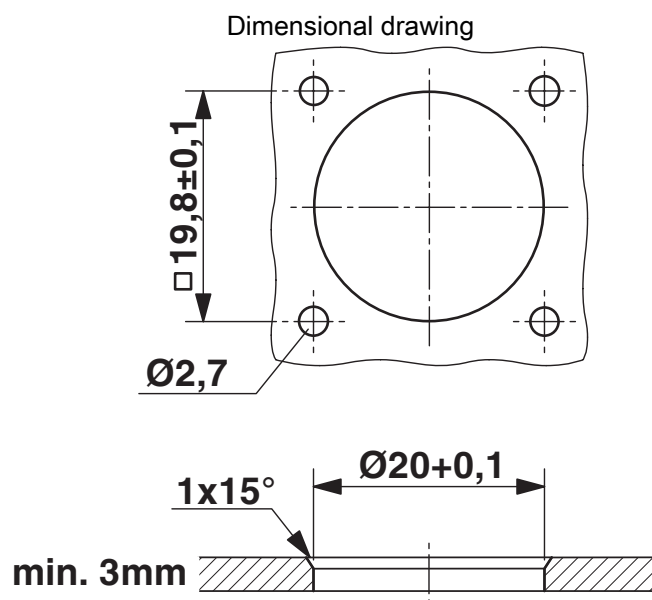
<https://www.phoenixcontact.com/us/products/1602205>



Drawings



Installation dimensions



Installation dimensions

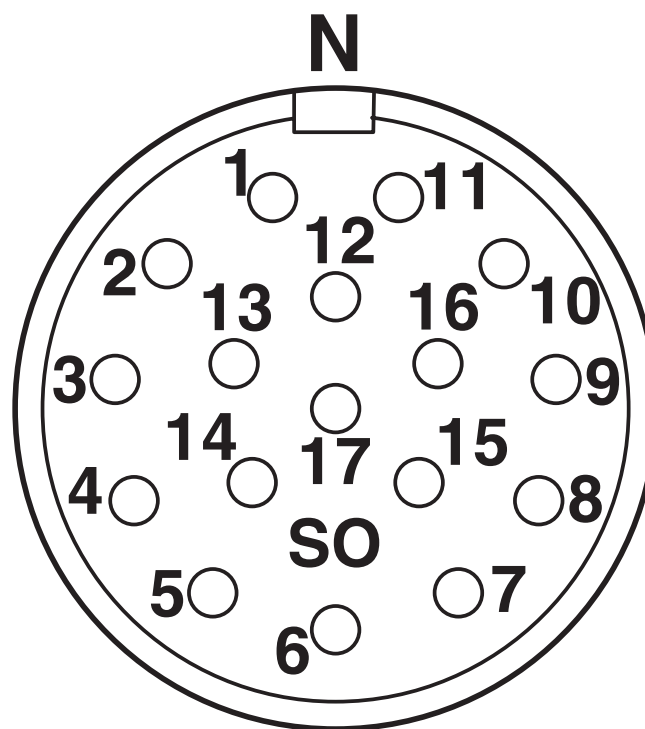
RC-17S1N8AB0L8 - Front panel feed-through

1602205

<https://www.phoenixcontact.com/us/products/1602205>



Schematic diagram



Connector pin assignment

Phoenix Contact 2025 © - all rights reserved
<https://www.phoenixcontact.com>

Phoenix Contact USA
586 Fulling Mill Road
Middletown, PA 17057, United States
(+717) 944-1300
info@phoenixcon.com