

# Han-Yellock PE-Contact-Chamber

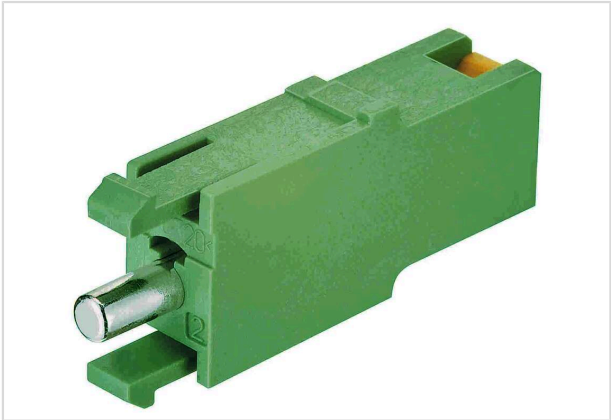


Image is for illustration purposes only. Please refer to product description.

Part number	11 05 001 2601
Specification	Han-Yellock PE-Contact-Chamber
HARTING eCatalogue	<a href="https://harting.com/11050012601">https://harting.com/11050012601</a>

## Identification

Category	Contacts
Series	Han-Yellock®
Type of contact	PE contact chamber

## Version

Termination method	Crimp termination
Termination method	Han-Quick Lock® termination
Gender	Male
Manufacturing process	Turned contacts

## Technical characteristics

Conductor cross-section	0.5 ... 2.5 mm²
Conductor cross-section [AWG]	AWG 20 ... AWG 14
Rated current	≤20 A
Contact resistance	≤2 mΩ
Stripping length	10 mm

## Material properties

Material (contacts)	Copper alloy
Surface (contacts)	Silver plated
RoHS	compliant with exemption
RoHS exemptions	6(c): Copper alloy containing up to 4 % lead by weight
ELV status	compliant with exemption



**Pushing Performance**  
Since 1945

## Material properties

China RoHS	50
REACH Annex XVII substances	Not contained
REACH ANNEX XIV substances	Not contained
REACH SVHC substances	Yes
REACH SVHC substances	Potassium 1,1,2,2,3,3,4,4,4-nonafluorobutane-1-sulphonate Lead
ECHA SCIP number	b51e5b97-eeb5-438b-8538-f1771d43c17d
California Proposition 65 substances	Yes
California Proposition 65 substances	Lead Nickel
Fire protection on railway vehicles	EN 45545-2 (2020-08)
Requirement set with Hazard Levels	R26

## Specifications and approvals

Specifications	IEC 60664-1 IEC 61984
----------------	--------------------------

## Commercial data

Packaging size	10
Net weight	1.92 g
Country of origin	Romania
European customs tariff number	85366990
GTIN	5713140109643
eCl@ss	27440204 Contact for industrial connectors
ETIM	EC000796
UNSPSC 24.0	39121522