

Han HPR SP3 95mm² w/o CG

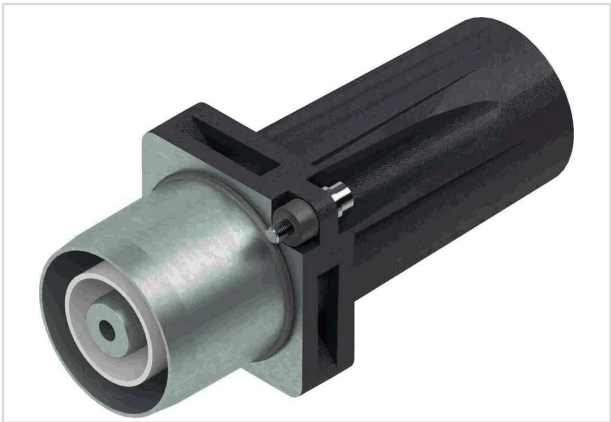


Image is for illustration purposes only. Please refer to product description.

Part number	10 40 331 1218
Specification	Han HPR SP3 95mm² w/o CG
HARTING eCatalogue	https://harting.com/10403311218

Identification

Category	Connector sets
Series of hoods/housings	Han® HPR TrainPowerLine
Element	Connector sets

Version

Number of contacts	1
Field of application	Hoods/housings for harsh outdoor environments

Technical characteristics

Conductor cross-section	95 mm²
Rated current	800 A
Rated voltage	5,100 V DC
	3,000 V AC

Material properties

Material (hood/housing)	Aluminium die-cast
	Corrosion resistant

Specifications and approvals

Specifications	EN 50124-1
	EN 50467
	IEC 61373 Category 1 Class B
	UIC 550
	UIC 552



Pushing Performance
Since 1945

Commercial data

Packaging size	1
Country of origin	Germany
European customs tariff number	85366990
GTIN	5713140190061
eCl@ss	27440114 Rectangular connector (for field assembly)
ETIM	EC002636
UNSPSC 24.0	39121408