

SEK-18 SV FE TYPA ZGL 14P PLS4

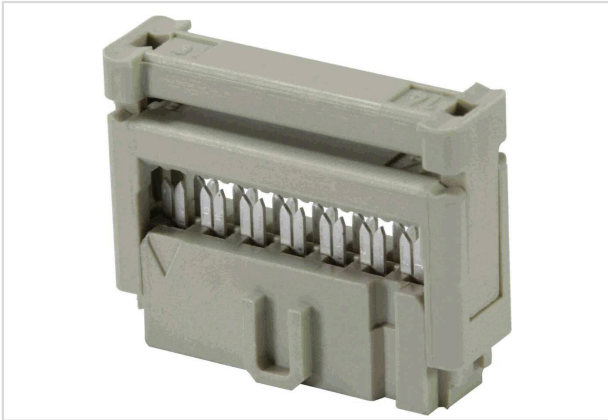


Image is for illustration purposes only. Please refer to product description.

Part number	09 18 514 5813
Specification	SEK-18 SV FE TYPA ZGL 14P PLS4
HARTING eCatalogue	https://harting.com/09185145813

Identification

Category	Connectors
Series	SEK
Element	Female connector

Version

Termination method	IDC insulation displacement termination
Connection type	PCB to cable
Number of contacts	14
Strain relief	With strain relief clamp
Details	for IDC flat cable 1.27 mm (0.050") pitch AWG 28/7 - AWG 26/7

Technical characteristics

Contact rows	2
Contact spacing (termination side)	2.54 mm
Contact spacing (mating side)	1.27 mm
Rated current	2.5 A
Insulation resistance	$>10^9 \Omega$
Contact resistance	$\leq 20 \text{ m}\Omega$
Limiting temperature	-55 ... +125 °C
Insertion force	$\leq 28 \text{ N}$
Withdrawal force	$\leq 28 \text{ N}$
Performance level	NM 30 (S4)



Pushing Performance
Since 1945

Technical characteristics

Mating cycles	≥250
Test voltage $U_{r.m.s.}$	1 kV
Isolation group	IIIa ($175 \leq CTI < 400$)

Material properties

Material (insert)	Thermoplastic resin (PBT)
Colour (insert)	Grey
Material (contacts)	Copper alloy
Surface (contacts)	Noble metal over Ni Mating side Sn over Ni Termination side
Layer thickness	≥0.76 μm
Layer thickness	≥30 μinch
Material flammability class acc. to UL 94	V-0
RoHS	compliant
ELV status	compliant
China RoHS	e
REACH Annex XVII substances	Not contained
REACH ANNEX XIV substances	Not contained
REACH SVHC substances	Not contained
California Proposition 65 substances	Yes
California Proposition 65 substances	Antimony trioxide Nickel
Fire protection on railway vehicles	EN 45545-2 (2020-08)
Requirement set with Hazard Levels	R26

Specifications and approvals

Specifications	IEC 60603-13
UL / CSA	UL 1977 ECBT2.E102079 CSA-C22.2 No. 182.3 ECBT8.E102079
Railway classification	F3/I3

Commercial data

Packaging size	100
Net weight	2.56 g
Country of origin	Romania



Pushing Performance
Since 1945

Commercial data

European customs tariff number	85366990
GTIN	5713140027718
eCl@ss	27460202 PCB connector (conductor connection)
ETIM	EC002637
UNSPSC 24.0	39121415
