

Han Domino RJ45 cube, IDC cat5 M.1

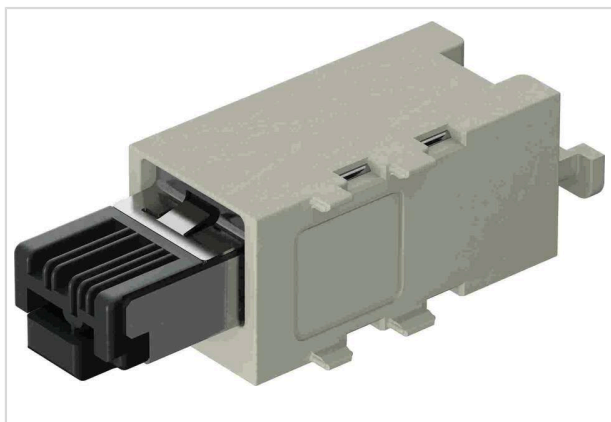


Image is for illustration purposes only. Please refer to product description.

Part number	09 14 945 1003
Specification	Han Domino RJ45 cube, IDC cat5 M.1
HARTING eCatalogue	https://harting.com/09149451003

Identification

Category	Modules
Series	Han-Modular®
Type of module	Han® Domino RJ45 Cube
Size of the module	Domino module
Description of the module	Small tab

Version

Termination method	IDC insulation displacement termination
Gender	Male
Shielding	Shielded
Number of contacts	4

Technical characteristics

Conductor cross-section [AWG]	AWG 24 ... AWG 22
Wire outer diameter	≤1.6 mm
Rated current	1 A
Rated voltage	50 V
Rated impulse voltage	0.8 kV
Pollution degree	3
Transmission characteristics	Cat. 5 Class D up to 100 MHz
Data rate	10 Mbit/s 100 Mbit/s
Insulation resistance	>10 ¹⁰ Ω



Pushing Performance
Since 1945

Technical characteristics

Limiting temperature	-40 ... +70 °C
Mating cycles	≥500

Material properties

Material (insert)	Polyamide (PA) Polycarbonate (PC)
Colour (insert)	RAL 7032 (pebble grey)
Material flammability class acc. to UL 94	V-0
RoHS	compliant
ELV status	compliant
China RoHS	e
REACH Annex XVII substances	Not contained
REACH ANNEX XIV substances	Not contained
REACH SVHC substances	Not contained
California Proposition 65 substances	Not contained

Specifications and approvals

Specifications	IEC 60664-1 IEC 61984
----------------	--------------------------

Commercial data

Packaging size	1
Country of origin	Romania
European customs tariff number	85389099
GTIN	5713140399969
eCl@ss	27440218 Module for industrial connectors (data)
ETIM	EC000438
UNSPSC 24.0	39121552