



Pushing Performance
Since 1945

Han® E Push-In module, male 0,5-2,5mm²

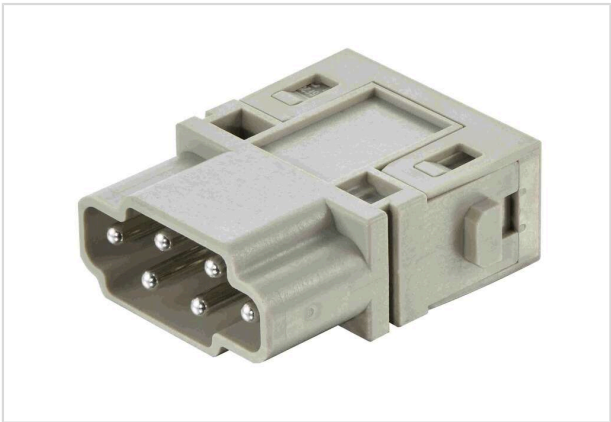


Image is for illustration purposes only. Please refer to product description.

Part number	09 14 006 5001
Specification	Han® E Push-In module, male 0,5-2,5mm²
HARTING eCatalogue	https://harting.com/09140065001

Identification

Category	Modules
Series	Han-Modular®
Type of module	Han E® module
Size of the module	Single module

Version

Termination method	Push-In
Gender	Male
Number of contacts	6

Technical characteristics

Conductor cross-section	0.5 ... 2.5 mm²
Wire outer diameter	≤4.8 mm
Rated current	16 A
Rated voltage	500 V
Rated impulse voltage	6 kV
Pollution degree	3
Insulation resistance	>10 ¹⁰ Ω
Stripping length	10 mm
Limiting temperature	-40 ... +125 °C
Mating cycles	≥500



Pushing Performance
Since 1945

Material properties

Material (insert)	Polycarbonate (PC)
Colour (insert)	RAL 7032 (pebble grey)
Material flammability class acc. to UL 94	V-0
RoHS	compliant
ELV status	compliant
China RoHS	e
REACH Annex XVII substances	Not contained
REACH ANNEX XIV substances	Not contained
REACH SVHC substances	Not contained
California Proposition 65 substances	Yes
California Proposition 65 substances	Lead
Fire protection on railway vehicles	EN 45545-2 (2020-08)
Requirement set with Hazard Levels	R22 (HL 1-3)
	R23 (HL 1-3)

Specifications and approvals

Specifications	IEC 60664-1
	IEC 61984
	IEC 61373 Category 2
	IEC 60352-7

Commercial data

Packaging size	2
Country of origin	Romania
European customs tariff number	85389099
GTIN	5713140424821
eCl@ss	27440217 Module for industrial connectors (power/signals)
ETIM	EC000438
UNSPSC 24.0	39121552