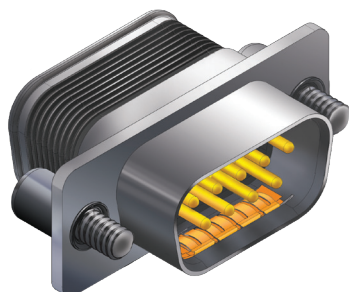


280-086 pin connectors with standard M24308 type mounting flange, integral banding platform and crimp termination



HiPer-D® pin connectors feature integrated banding platform, crimp, rear-releaseable size #20 or #22 contacts. Intermateable with standard M24308-type D-Subminiature connectors, the HiPer-D® features a rugged machined aluminum shell, waterproof sealing and optional ground springs for improved resistance to electromagnetic interference. Gold-plated size #20 contacts conform to M39029/63-368 and accept #20 to #24 AWG wire. Gold-plated size #22 contacts conform to M39029/57-354 and accept #22 to #28 AWG wire. Contacts are packaged with connector. Terminate contacts with crimp tools purchased separately. Glass-reinforced thermoset epoxy insulators, copper alloy retention clips. Fluorosilicone face seal and rear grommet meet IP67 immersion requirement. 1000 VAC, 5 Amps (#22) or 7.5 Amps (#20).

B

| Ordering Information | | | | | | |
|--------------------------------|--|----------|------|---|---|---|
| Sample Part Number | | 280-086P | 3S25 | ME | G | P |
| Basic Part Number | 280-086P | | | | | |
| Shell Size-Contact Arrangement | See Shell Size - Contact Arrangements Table | | | | | |
| Shell Finish | ME = Electroless Nickel Z1 = Passivated Stainless Steel | | | MT = Nickel-PTFE ZM = Nickel over Stainless | | |
| Ground Spring | G = Supplied with EMI Ground Spring | | | N = No Ground Spring | | |
| Mating Hardware | N = No Hardware (Through-Hole) L = Jackscrew, Hex Head, Low Profile S = Screwlock, Male, Hex Head, Low Profile | | | P = #4-40 Female Jackpost K = Jackscrew, Slot Head, Extended Length T = Screwlock, Male, Slot Head, Extended Length | | |

| Shell Size - Contact Arrangements | | |
|-----------------------------------|----------------------|-----|
| Shell Size-Contact Arr. | Contact Size and Qty | |
| | #20 | #22 |
| Standard Density | | |
| 1S9 | 9 | |
| 2S15 | 15 | |
| 3S25 | 25 | |
| 4S37 | 37 | |
| 5S50 | 50 | |
| High Density | | |
| 1H15 | | 15 |
| 2H26 | | 26 |
| 3H44 | | 44 |
| 4H62 | | 62 |
| 5H78 | | 78 |
| 6H104 | | 104 |

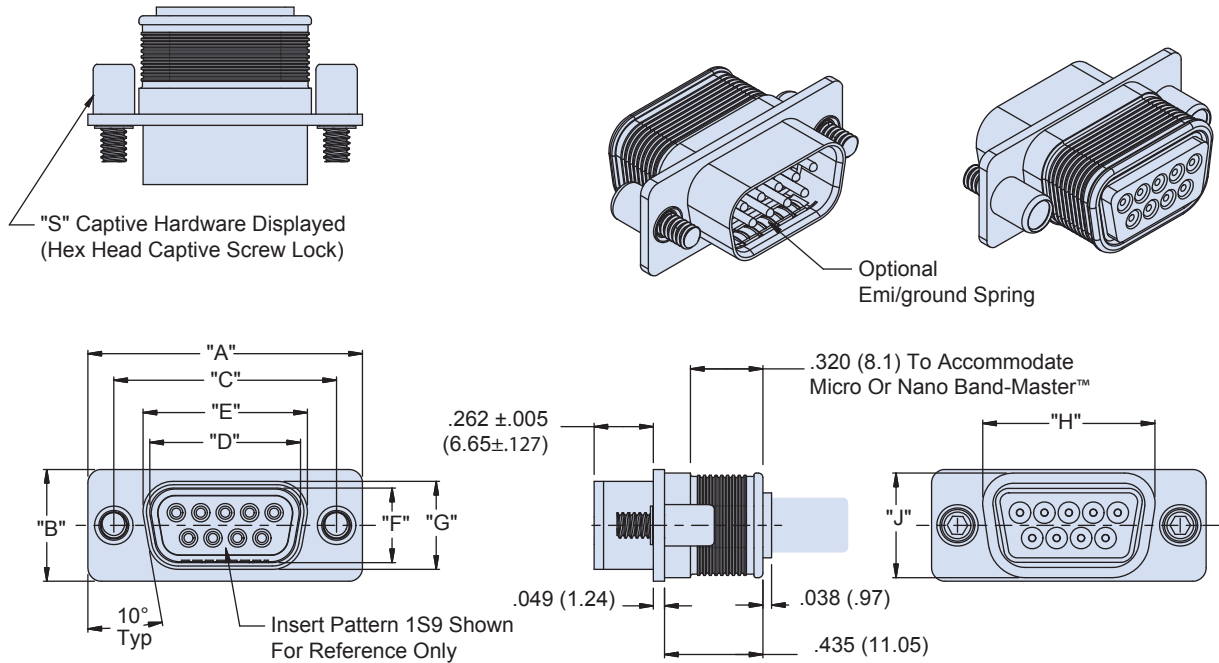
| Mating Hardware | |
|---|---|
| N Thru-Hole No Hardware | P Female Jackpost |
| | |
| S Captive Screwlock, Hex Head | L Captive Jackscrew, Hex Head |
| | |
| K Slot-Head Extended Jackscrew | T Slot-Head Extended Captive Screwlock |
| | |

| Materials and Finishes | |
|------------------------|---------------------------------------|
| Shell | Aluminum alloy |
| Contacts | Copper alloy, 50 microin. gold plated |
| Insulators | Thermoset epoxy |
| Retention Clips | Copper alloy |
| Grommet and Seal | Fluorosilicone rubber |
| EMI Spring | Copper alloy, nickel plated |
| Hardware | 300 series stainless steel |

| Specifications | |
|-----------------------|--------------------------|
| Current Rating | #22 5 AMPS, #20 7.5 AMPS |
| Test Voltage | 1000 VAC RMS |
| Insulation Resistance | 5000 megohms minimum |
| Operating Temperature | -65° C. to +200° C. |
| Ingress Protection | IP 67 |
| Shock | 300 g. |
| Vibration, Random | 43.92 g. |

280-086 pin connectors with standard M24308 type mounting flange, integral banding platform and crimp termination

280-086P DIMENSIONS



| Shell Size | Insert Pattern | "A" ±.015 | | "B" ±.015 | | "C" ±.005 | | "D" ±.005 | | "E" ±.005 | | "F" ±.005 | | "G" ±.005 | | "H" | | "J" | | Contact P/N |
|------------|----------------|-----------|-------|-----------|-------|-----------|-------|-----------|-------|-----------|-------|-----------|-------|-----------|-------|-------|-------|-------|-------|---------------|
| | | in. | mm. | in. | mm. | in. | mm. | in. | mm. | in. | mm. | in. | mm. | in. | mm. | in. | mm. | in. | mm. | |
| 1 | SD 9 | 1.213 | 30.81 | 0.494 | 12.55 | 0.984 | 24.99 | 0.666 | 16.92 | 0.726 | 18.44 | 0.329 | 8.36 | 0.389 | 9.88 | 0.760 | 19.30 | 0.462 | 11.73 | M39029/64-369 |
| | HD 15 | | | | | | | | | | | | | | | | | | | M39029/58-360 |
| 2 | SD 15 | 1.541 | 39.14 | 0.494 | 12.55 | 1.312 | 33.32 | 0.994 | 25.25 | 1.054 | 26.77 | 0.329 | 8.36 | 0.389 | 9.88 | 1.089 | 27.66 | 0.462 | 11.73 | M39029/64-369 |
| | HD 26 | | | | | | | | | | | | | | | | | | | M39029/58-360 |
| 3 | SD 25 | 2.088 | 53.03 | 0.494 | 12.55 | 1.852 | 47.04 | 1.534 | 38.96 | 1.594 | 40.49 | 0.329 | 8.36 | 0.389 | 9.88 | 1.629 | 41.38 | 0.462 | 11.73 | M39029/64-369 |
| | HD 44 | | | | | | | | | | | | | | | | | | | M39029/58-360 |
| 4 | SD 37 | 2.729 | 69.32 | 0.494 | 12.55 | 2.5 | 63.50 | 2.182 | 55.42 | 2.242 | 56.95 | 0.329 | 8.36 | 0.389 | 9.88 | 2.277 | 57.84 | 0.462 | 11.73 | M39029/64-369 |
| | HD 62 | | | | | | | | | | | | | | | | | | | M39029/58-360 |
| 5 | SD 50 | 2.635 | 66.93 | 0.605 | 15.37 | 2.406 | 61.11 | 2.079 | 52.81 | 2.139 | 54.33 | 0.441 | 11.20 | 0.501 | 12.73 | 2.182 | 55.42 | 0.474 | 12.04 | M39029/64-369 |
| | HD 78 | | | | | | | | | | | | | | | | | | | M39029/58-360 |
| 6 | HD 104 | 2.729 | 69.32 | 0.668 | 16.97 | 2.5 | 63.50 | 2.212 | 56.18 | 2.272 | 57.71 | 0.503 | 12.78 | 0.563 | 14.30 | 2.307 | 58.60 | 0.626 | 15.90 | M39029/58-360 |

NOTES

- HiPer-D® connectors are available with a wide variety of materials and finishes. See [About Series 28 HiPer-D® Shell Plating Options](#) for additional choices. Glenair offers the industry's widest selection of plating and material choices with no setup charge, no minimum order quantity and no schedule impact.
- For panel cutout dimensions, refer to [Panel Cutouts and Printed Circuit Board Footprints](#).
- connectors are supplied with crimp contacts per M39029. Contacts are not installed. Refer to [HiPer-D® Contacts and Crimp Tools](#) for contact part numbers, specifications, crimp tool information, and insertion/extraction tools.
- HiPer-D® connectors meet the requirements of MIL-DTL-24308 and are intermateable with standard M24308-type D-Subminiature connectors with corresponding contact arrangements and type.
- Additional electrical, mechanical and environmental specifications are listed in [HiPer-D® Product Specification](#).