

061-007

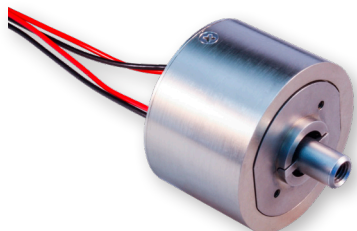
Medium-duty hold-down release mechanism

600 lb. release preload

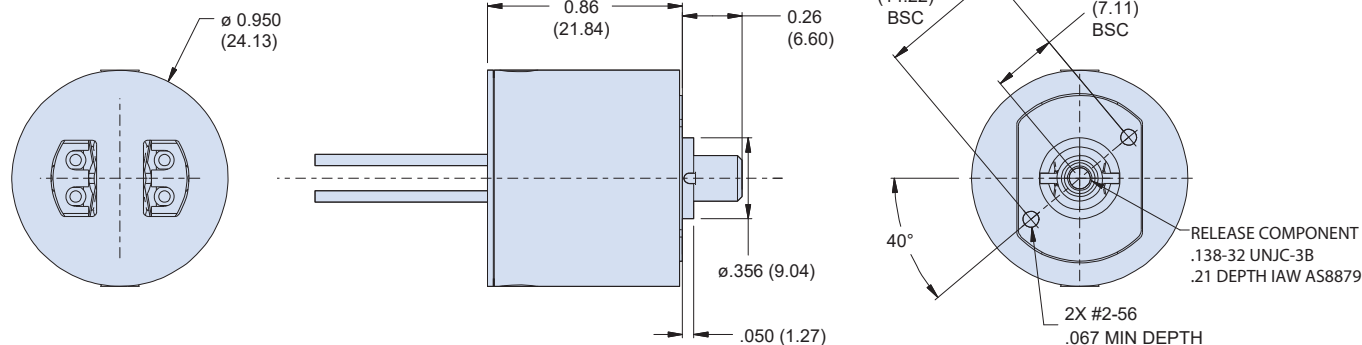
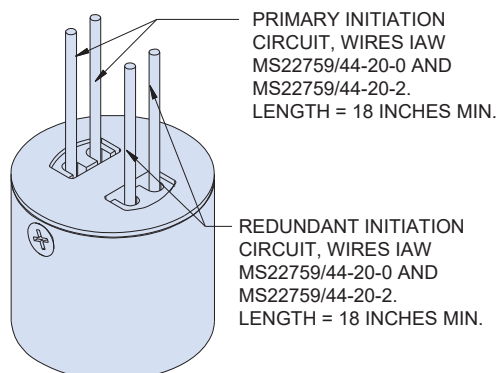
Redundant circuit



REDUNDANT CIRCUIT HOLD DOWN RELEASE MECHANISM, MEDIUM-DUTY



How To Order		
Sample Part No.	061	-007
Basic Part No.	Medium-Duty HDM	
Dash No.	Redundant Circuit	



NOTES

- Unit is identified with Glenair name, CAGE code, part number, and date code, space permitting. Primary initiation circuit identified with "P" and redundant with "R".
- Release preload 600 lbs. (2.67 kN)
- Qualification report available upon request.
- Reference Glenair P/N 060-107 for refurbishment initiator
- Metric threads available, consult factory for options

Physical characteristics	
Mass	38.5 grams approximate weight
Release component thread	0.138-32 UNJC-3B*
Material list	IAW MSFC-STD-3029
Epoxy	Outgassing requirements per GSC19384
Device features	
Redundant initiation	2 initiation points
Field refurbishable	Initiator can be replaced in less than 15 minutes by trained personnel
Reliability prediction	0.9999994 (based off scaled design)
Packaging	External housing typically supplied with two mounting points. Custom housings and mountings available
Connectorization	Standard design supplied with wire inputs. Connectorized versions available
Scalable bolt size	Bolt size determines preload and can be scaled to accommodate a wide range of requirements
*Size callout based on the bolt size to be used. Metric thread also available. Consult factory for qualification test report.	

061-007

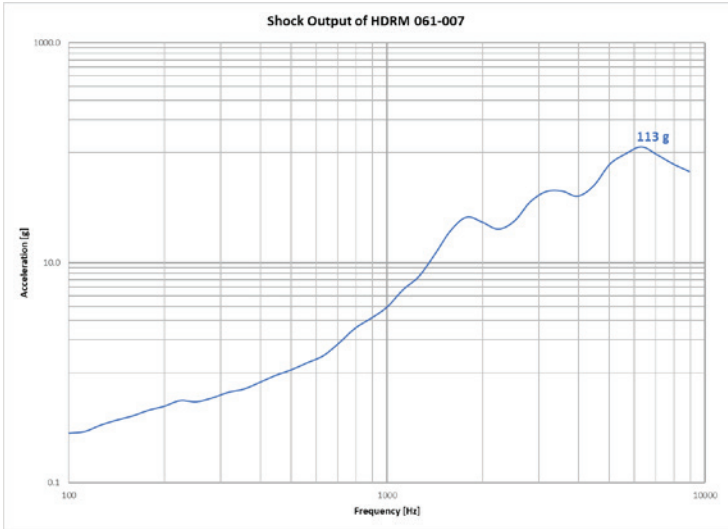
Medium-duty hold-down release mechanism

600 lb. release preload

Actuation curve



A



Tested Capability for 061-007	
Nominal Release Preload	600 pounds
Electrical Resistance	0.8 to 2.0 ohms
Sine Vibration 3 orthogonal axes	25 G's
Random Vibration 3 orthogonal axes	50.9 G _{rms}
Actuation Time	Under 60 ms @3.5 Amps
Source Shock	Under 150 G's @600 pounds
Life Test	10 refurbishments during qualification and an expected continued usage
Temperature	-150°C to +150°C released in a vacuum (1x10 ⁻⁶ Torr)

