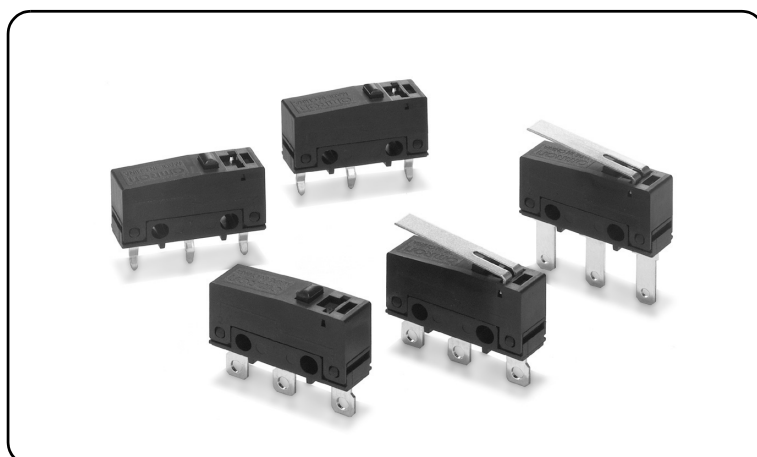


SS-P

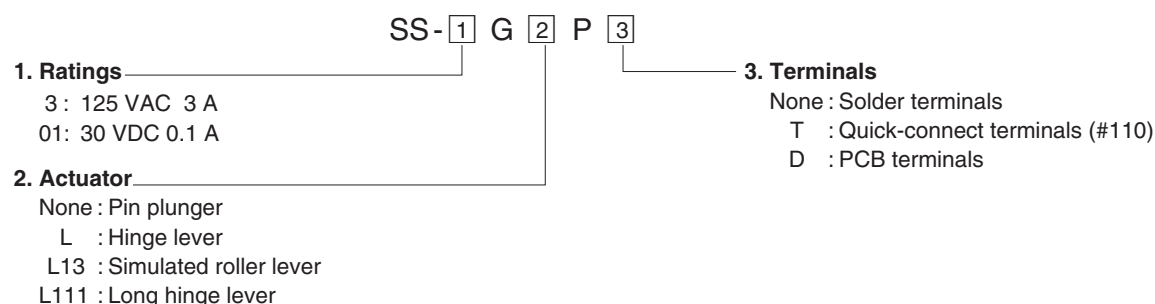
Subminiature Basic Switch

SS Series Compatible Mounting with a Simple Construction and Easy-to-Use Design Concept

- One-piece terminal construction to keep out flux.
- A single leaf movable spring construction.
- Conforms to North American and European safety Standards.
- 1 mm MIN Contact Gap Models available for Interlock applications



Model Number Legend



List of Models

●0.5 mm Contact Gap Models

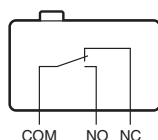
Ratings	Actuator	Terminals	Solder terminals	Quick-connect terminals (#110)	PCB terminals
3A	Pin plunger		SS-3GP	SS-3GPT	SS-3GPD
	Hinge lever		SS-3GLP	SS-3GLPT	SS-3GLPD
	Simulated roller lever		SS-3GL13P	SS-3GL13PT	SS-3GL13PD
0.1A	Pin plunger		SS-01GP	SS-01GPT	SS-01GPD
	Hinge lever		SS-01GLP	SS-01GLPT	SS-01GLPD
	Simulated roller lever		SS-01GL13P	SS-01GL13PT	SS-01GL13PD

●1 mm MIN Contact Gap Models

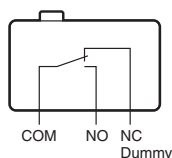
Ratings	Actuator	Terminals Contact form	Solder terminals	Quick-connect terminals (#110)
3A	Long hinge lever	SPST-NO	SS-3FL111P-3	SS-3FL111P-3T

Contact Form

●SPDT



●SPST-NO (SS-3FP models)



Separator (Sold Separately), Terminal Connector (Sold Separately) ➡ Refer to "Basic Switch Common Accessories"

Contact Specifications

Item	Model	SS-3P models	SS-01P models	SS-3FP models
Contact	Specification	Rivet	Crossbar	Rivet
	Material	Silver	Gold alloy	Silver
	Gap (standard value)	0.5 mm	0.5 mm	1 mm min.
Inrush current	NC	9 A max.	-	9 A max.
	NO			
Minimum applicable load (reference value) *		5 VDC 160 mA	5 VDC 1 mA	5 VDC 160 mA

* Please refer to "Using Micro Loads" in "●Precautions" for more information on the minimum applicable load.

Approved Safety Standards

UL (UL61058-1)/cUL (CSA C22.2 No.61058-1)

Rated voltage	Model	SS-3P / SS-3FP	SS-01P
Item		Resistive load	
125 VAC		3 A	0.1 A
30 VDC		3 A	0.1 A

VDE (EN61058-1)

Rated voltage	Model	SS-3P / SS-3FP	SS-01P
125 VAC		3 A	0.1 A
30 VDC		3 A	0.1 A

Testing conditions: 5E4 (50,000 operations) T55 (0 to 55°C)

Ratings

Rated voltage	Model	SS-3P / SS-3FP models	SS-01P models
Item		Resistive load	
125 VAC		3 A	0.1 A
30 VDC		3 A	0.1 A

Note 1. The above rating values apply under the following test conditions.

- (1) Ambient temperature: 20±2°C
- (2) Ambient humidity: 65±5%
- (3) Operating frequency: 20 operations/min

Note 2. Consult your OMRON sales representative for information on models for other loads.

Characteristics

Item		Model	SS-3P models	SS-01P models	SS-3FP models
Permissible operating speed			0.1 mm to 1 m/s (for pin plunger models)		
Permissible operating frequency	Mechanical	300 operations/min			
	Electrical	30 operations/min			
Insulation resistance			100 MΩ min. (at 500 VDC with insulation tester)		
Contact resistance (initial value)			50 mΩ max.	100 mΩ max.	50 mΩ max.
Dielectric strength *1	Between terminals of the same polarity	1,000 VAC 50/60 Hz for 1 min			
	Between current-carrying metal parts and ground	1,500 VAC 50/60 Hz for 1 min			
	Between each terminals and non-current-carrying metal parts	1,500 VAC 50/60 Hz for 1 min			
Vibration resistance *2	Malfunction	10 to 55 Hz, 1.5 mm double amplitude			
Shock resistance	Durability	1,000 m/s² {approx. 100G} max.			
	Malfunction *2	300 m/s² {approx. 30G} max.			
Durability *3	Mechanical	1,000,000 operations min. (60 operations/min)			100,000 operations min. (60 operations/min)
	Electrical	70,000 operations min. (20 operations/min, 125 VAC)	200,000 operations min. (20 operations/min)	100,000 operations min. (20 operations/min)	
		100,000 operations min. (20 operations/min, 30 VDC)			
Degree of protection			IEC IP40		
Degree of protection against electric shock			Class I		
Ambient operating temperature			-25°C to +85°C (at ambient humidity of 60% max.) (with no icing or condensation)		
Ambient operating humidity			85% max. (for +5 to +35°C)		
Weight			Approx. 1.6 g (pin plunger models)		

Note. The data given above are initial values.

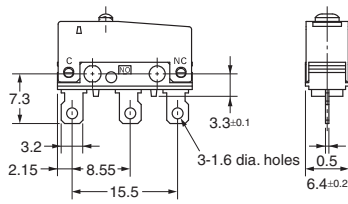
*1. The values for dielectric strength shown are for models with a Separator (refer to "Micro Switch Common Accessories").

*2. The values are at Free Position and Total Travel Position values for pin plunger, and Total Travel Position value for lever. Close or open circuit of the contact is 1 ms max.

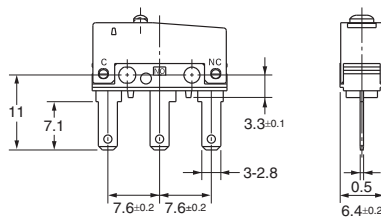
*3. For testing conditions, consult your OMRON sales representative.

Terminals/Appearances (Unit: mm)

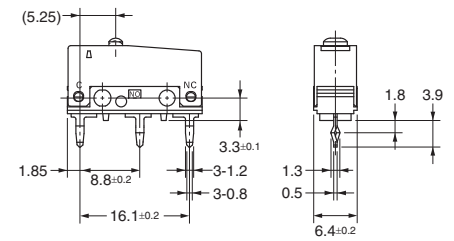
●Solder terminals



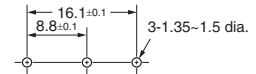
●Quick Connect Terminals (#110)



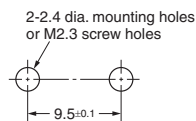
●PCB terminals



<PCB Mounting Dimensions (Reference)>



Mounting Holes (Unit: mm)



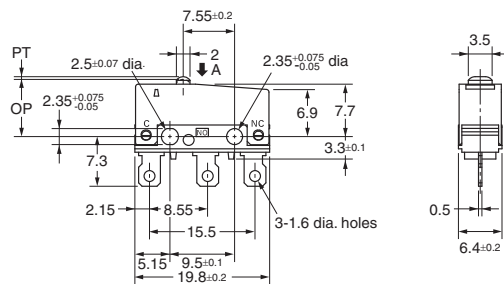
Dimensions (Unit: mm) and Operating Characteristics

The illustrations and dimensions are for models with solder terminals. Refer to "Terminals/Appearances" for details on models with quick connect terminals (#110) or PCB terminals.

●Pin plunger

SS-3GP

SS-01GP

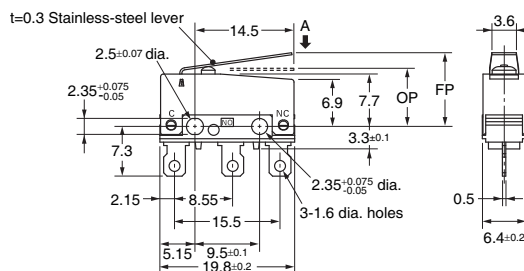
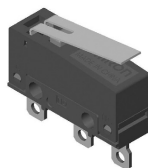


Operating characteristics	Model	SS-3GP	SS-01GP
Operating Force	OF	Max.	1.50 N {153 gf}
Releasing Force	RF	Min.	0.2 N {20 gf}
Pretravel	PT	Max.	0.6 mm
Overtravel	OT	Min.	0.4 mm
Movement Differential	MD	Max.	0.15 mm
Operating Position	OP		8.4±0.3 mm

●Hinge lever

SS-3GLP

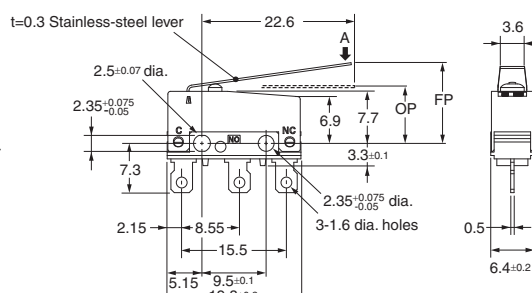
SS-01GLP



Operating characteristics	Model	SS-3GLP	SS-01GLP
Operating Force	OF	Max.	0.5 N {51 gf}
Releasing Force	RF	Min.	0.05 N {5 gf}
Overtravel	OT	Min.	1.0 mm
Movement Differential	MD	Max.	0.8 mm
Free Position	FP	Max.	13.6 mm
Operating Position	OP		8.8±0.8 mm

●Long hinge lever

SS-3FL11P-3

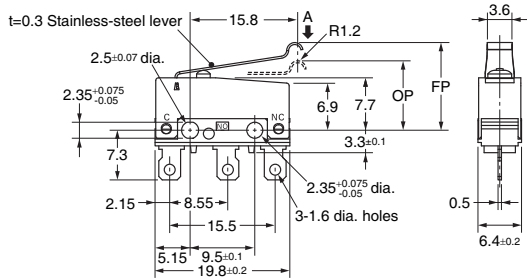
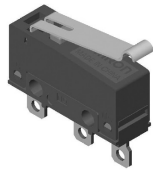


Operating characteristics	Model	SS-3FL11P-3
Operating Force	OF	Max.
Releasing Force	RF	Min.
Overtravel	OT	Min.
Movement Differential	MD	Max.
Free Position	FP	Max.
Operating Position	OP	

Note 1. Unless otherwise specified, a tolerance of ± 0.4 mm applies to all dimensions.

Note 2. The operating characteristics are for operation in the A direction (↓).

●Simulated roller lever
SS-3GL13P
SS-01GL13P



Operating characteristics		Model	SS-3GL13P	SS-01GL13P
Operating Force	OF	Max.	0.5 N {51 gf}	
Releasing Force	RF	Min.	0.05 N {5 gf}	
Overtravel	OT	Min.	1.0 mm	
Movement Differential	MD	Max.	0.8 mm	
Free Position	FP	Max.	15.5 mm	
Operating Position	OP		10.7±0.8 mm	

Note 1. Unless otherwise specified, a tolerance of ±0.4 mm applies to all dimensions.
Note 2. The operating characteristics are for operation in the A direction (↓).

Precautions

★Please refer to "Common Precautions" for correct use.

Cautions

●Soldering

- Connecting to Solder Terminals
Complete the soldering at the iron tip temperature of 350 to 400°C within 5 seconds, and do not apply any external force for 1 minute after soldering. Soldering at an excessively high temperature or soldering for more than 5 seconds may deteriorate the characteristics of the Switch.
- Connecting to PCB terminals
When using automatic soldering baths, we recommend soldering at 260±5°C within 5 seconds. Make sure that the liquid surface of the solder does not flow over the edge of the board.
When soldering terminals manually, complete the soldering at the iron tip temperature between 350 to 400°C within 3 seconds, and do not apply any external force for 1 minute after soldering. When applying solder, keep the solder away from the case of the Switch and do not allow solder or flux to flow into the case.

Correct Use

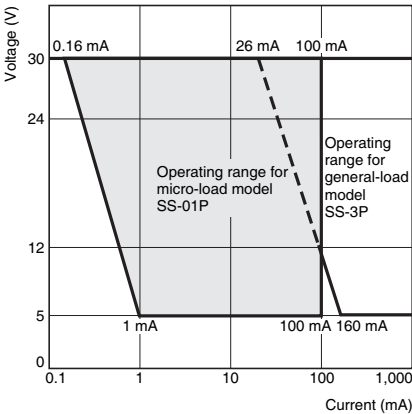
●Mounting

Use M2.3 mounting screw with plane washers or spring washers to securely mount the Switch. Tighten the screws to a torque of 0.23 to 0.26 N·m {2.3 to 2.7 kgf·cm}.

●Using Micro Loads

Using a model for ordinary loads to open or close the contact of a micro load circuit may result in faulty contact. Use models that operate in the following range. However, even when using micro load models within the following operating range, if inrush current occurs when the contact is opened or closed, it may increase the contact wear and so decrease durability. Therefore, insert a contact protection circuit where necessary. The N-level reference value applies for the minimum applicable load. This value indicates the malfunction reference level for the reliability level of 60% (λ_{60}).

(JIS C5003)
The equation, $\lambda_{60}=0.5 \times 10^{-6} / \text{operation}$ indicates that the estimated malfunction rate is less than $\frac{1}{2,000,000}$ operations with a reliability level of 60%.



Please check each region's Terms & Conditions by region website.

OMRON Corporation

Device & Module Solutions Company

Regional Contact

Americas

<https://components.omron.com/us>

Asia-Pacific

<https://components.omron.com/ap>

Korea

<https://components.omron.com/kr>

Europe

<https://components.omron.com/eu>

China

<https://components.omron.com.cn>

Japan

<https://components.omron.com/jp>