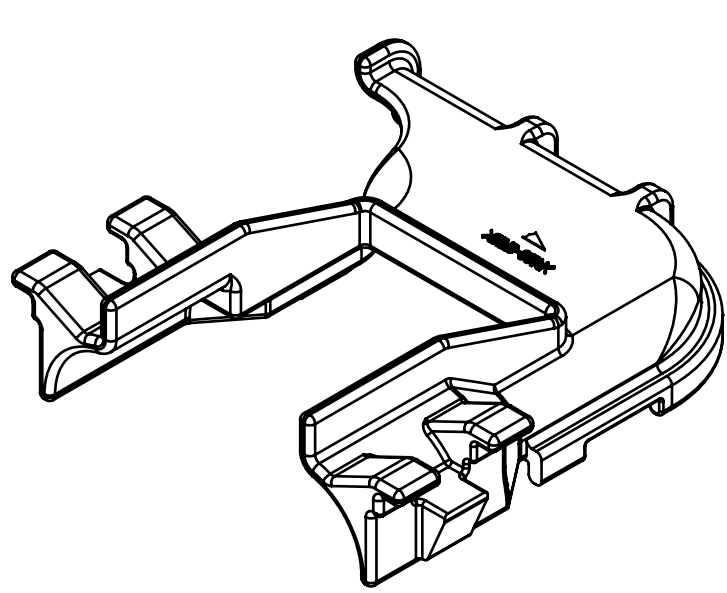
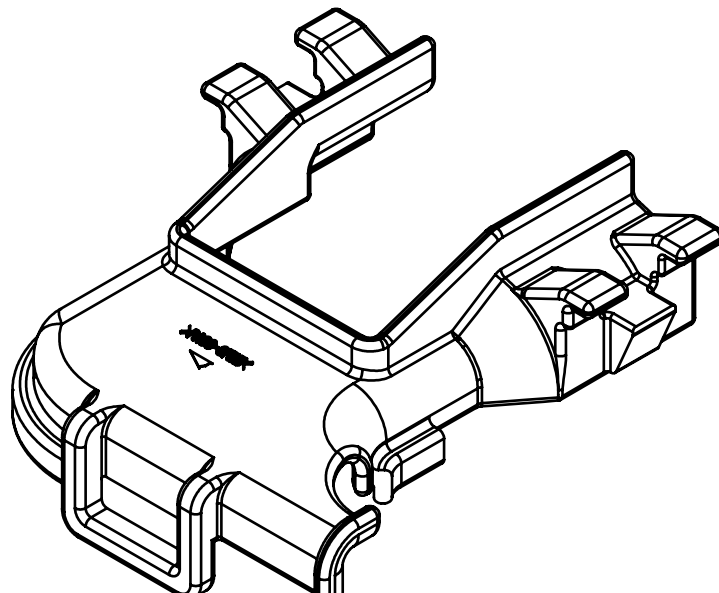


PART NUMBER	PART NAME	MATERIAL	COLOR	QUANTITY
7174-1811-30	5P 1.2mm SEALED CONNECTOR TWO-PIECE ROUTING COVER - TOP PIECE	PA66-GF35	BLACK	1



FRONT ISOMETRIC VIEW
(2/1)



REAR ISOMETRIC VIEW
(2/1)

NOTES:

- PARTS MUST BE PURCHASED FROM YAZAKI.
- PARTS MUST BE FREE OF FLASH AND IMPERFECTIONS THAT AFFECT FUNCTION.
- THIS PART TO BE USED WITH SUB-ASSEMBLY: 7289-4601-30, ETC.
- MATING PART NUMBER: 7174-1812-30
- PART SATISFIES USCAR-2, REV.6, FEB 2013 FOR MISCELLANEOUS COMPONENT ENGAGE/DISENGAGE FORCE.
- PART TO COMPLY WITH YPES-31-038 REQUIREMENTS.
- THIS DRAWING IS TO BE USED FOR INTERNAL YAZAKI PSW SUBMISSION.
- HANDLING MANUAL NUMBER: YPES-15-1666E.

-	02-19-2018	NEW	C18-A138	VL
LET	DATE	REVISION RECORD	NO.	CHKD

GENERAL TOLERANCE											
	10MAX	50MAX	100MAX	250MAX	250OVR	R5 MAX	R10 MAX	R20 MAX	R20 OVR	ANGLE	ECCENT
A	±0.15	±0.2	±0.3	±0.5	±0.75	±0.2	±0.3	±0.5	±2.5	±3°	0.1
B	±0.2	±0.3	±0.55	±0.95	±1.4					±3°	0.1
©	±0.3	±0.5	±0.8	±1.4	±2					±3°	0.15
SPECIFIED										MASS	(2.90) g

CUSTOMER		CUSTOMER DWG NO.		MATL. SPEC.	SEE TABLE 1	TREAT. & FIN.	N/A
CUSTOMER PART NO.		OFFICE		NAME			
7174-1811-30		YNA		5P 1.2mm SEALED CONNECTOR TWO-PIECE			
VENDOR		VENDOR NO.		ROUTING COVER - TOP PIECE			
DWG TYPE		DWG SOURCE		DWG DATE		PART NO.	
R		7174-1811-30:M		03-26-2018		CH. CODE	
APPROVED		CHECKED		CHECKED		DWG NO.	
						7174-1811-30:R	
						YAZAKI CORPORATION	