



Tools for
Advancing
Innovation



Included
Software

Mosaic 2.1

HDMI, USB
and SD Card
Outputs

Capture & Save
Images Directly
To SD Card

Integrated
Features

22" 1080p
HD Monitor

7x-70x
Magnification

Auto Focus



Mighty Cam Pro

18" Flex Arm

W/ 360 Swivel Head and 2" Table Clamp

22" HD Monitor Included

18" Flexible Arm Stands are a hassle-free addition to your inspection system. The arm easily bends and stays put in any position. Tilt, rotate, and position as needed. Features a universal 1/4-20" screw mount, compatible with many inspection cameras, consumer cameras, as well as Aven's Cyclops Digital Microscope.

Features:

- USB and HDMI outputs - connect to PC or an HD monitor
- Built-in measurement software - no PC required
- 7x-70x Magnification
- Crystal clear high resolution images
- 18" flexible arm. Stays in place in any position
- 1/4" screw mount compatible with many retail cameras, inspection cameras as well as the Cyclops Digital Microscope
- Features an attached 3" magnetic base

Mighty Cam Pro Auto Focus Digital Microscope With Flex Stand

Item Number	26700-121-PRO
Magnification	7x-70x
Resolution	2MP 1920x1080
Frame Rate	60 fps @HDMI, 30fps @USB2.0
Video Recording	30fps @SD Card, 30 fps @PC
Outputs	HDMI, USB2.0 and SD Card
PC Software	Mosaic 2.1
Package Contents	Mighty Cam Pro USB/HDMI AutoFocus 18" Flex Arm with Table Clamp, Computar Macro Lens, 22" HD Monitor,



Tools for
Advancing
Innovation



Included
Software

Mosaic 2.1

HDMI, USB
and SD Card
Outputs

Capture & Save
Images Directly
To SD Card

Auto
Focus

Full HD
1080p

60fps
HDMI

30fps
SD Card, PC
and USB

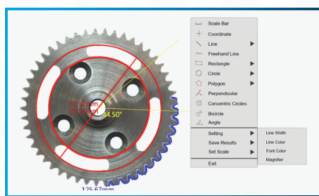
Mighty Cam Pro

Auto Focus HDMI/USB/SD

Aven's Mighty Cam Pro is an all-in-one inspection auto-focus camera. This camera offers both USB and HDMI outputs for inspection from an HD monitor or your PC via the included Mosaic software. This camera features integrated measurement capabilities for measuring without a PC. This camera also features a built-in SD card port for capturing instant high resolution images with no need for a PC.



Integrated Measurement System *No PC Required*



Built in on screen tools provide powerful measurement functions including freehand line, rectangle, polygon, circle, bicircle, angle, point-line distance and much more. Three different length units of millimeter, centimeter and micrometer are provided to meet various measurement requirements in different applications. Simple calibration tool is also included.

Mosaic Software Included

Compatible with Mosaic V2.1 Computational Imaging Software. Fast, efficient and worry-free is the core design concept of Mosaic V2.1 software. It adopts a new image "shooting-processing-measurement-reporting" function, modular design, and integrates various intelligent image processing algorithms. It is dedicated to providing users with more simple operation modes and improve work efficiency in all circumstances.

Real-Time Image Stitching

It can generate large-sized mosaic images in a few seconds while moving the stage, which is light, smooth and worry-free! Real-time depth-of-field fusion.

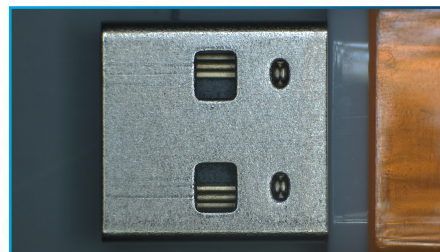
Perfect Color Reproduction

Aven's color processing is capable of a new level of precision, matches the monitor image to the eyepiece view, produces extremely-high color definition.

Macro Lens



Macro Lens



Micro Lens



Micro Lens

