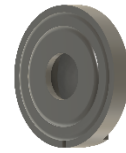




PUIaudio



Data Sheet

AR01032MR-3

Features:

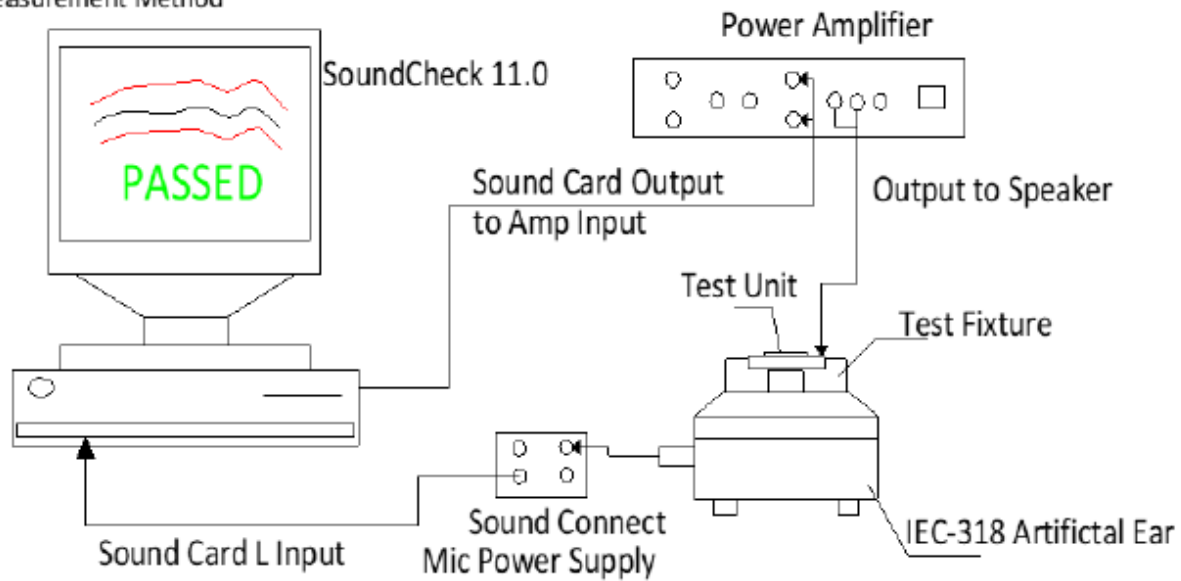
- Small 10mm x 3mm size
- High 122 dB output with 800mV in Artificial Ear (1cm)
- High energy neodymium magnet

Specifications

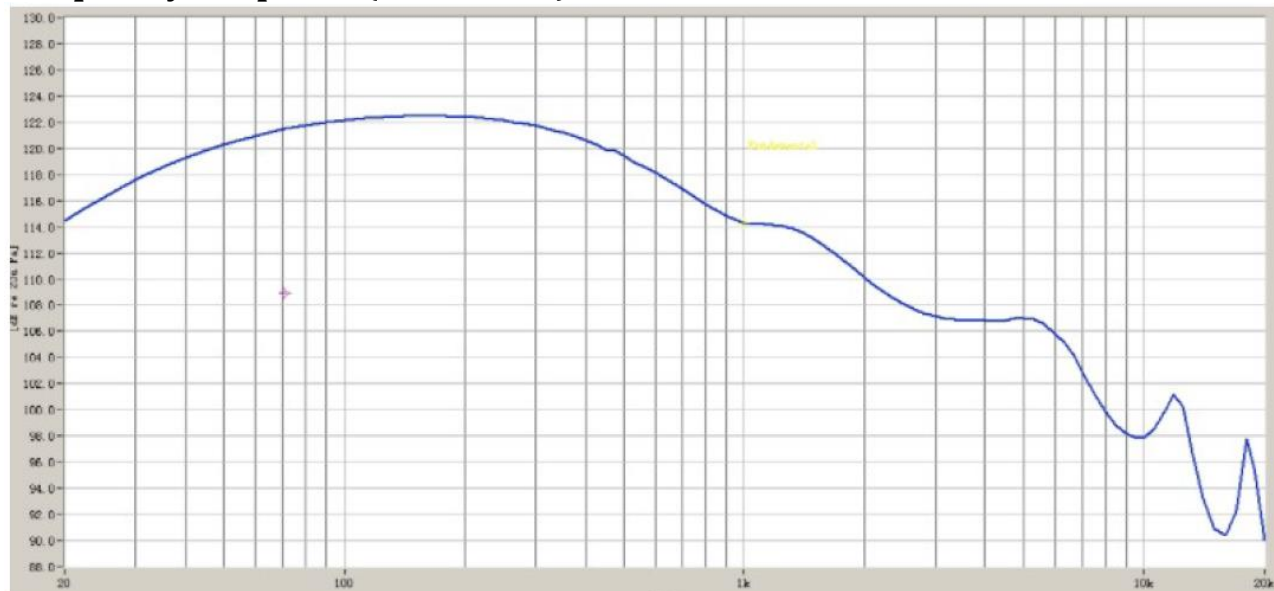
Parameters	Values	Units
Rated Input Power	3	mWatts
Max Input Power	5	mWatts
Impedance	$32 \pm 15\%$	Ohms
Sensitivity (SPL @ 1kHz, 1mV)	114.3 ± 1.5	dB Pa/V
Resonant Frequency	$122 \pm 20\%$	Hz
Frequency Range	20 ~ 20,000	Hz
Distortion (@ 1kHz/ 3mW)	3% Max	-
Frame Material	A3 Metal	-
Magnet Material	NdFeB	-
Diaphragm Material	PEEK + PU	-
Weight	0.7	Grams
Environmental Compliances	ROHS/REACH	-
Buzz, Rattle, etc.	Should not be audible with 350 mV sine wave from 50 Hz to 5 kHz	-
Polarity	When positive voltage is applied to the positive terminal, the diaphragm will move outward	-
Operating Temperature	-20 ~ +60	°C
Storage Temperature	-20 ~ +60	°C

Measurement Method (measured with mV, Temperature: 25 ~ 35°C, Relative Humidity: 25%~75%)

1. Measurement Method



Frequency Response (measured at mV)

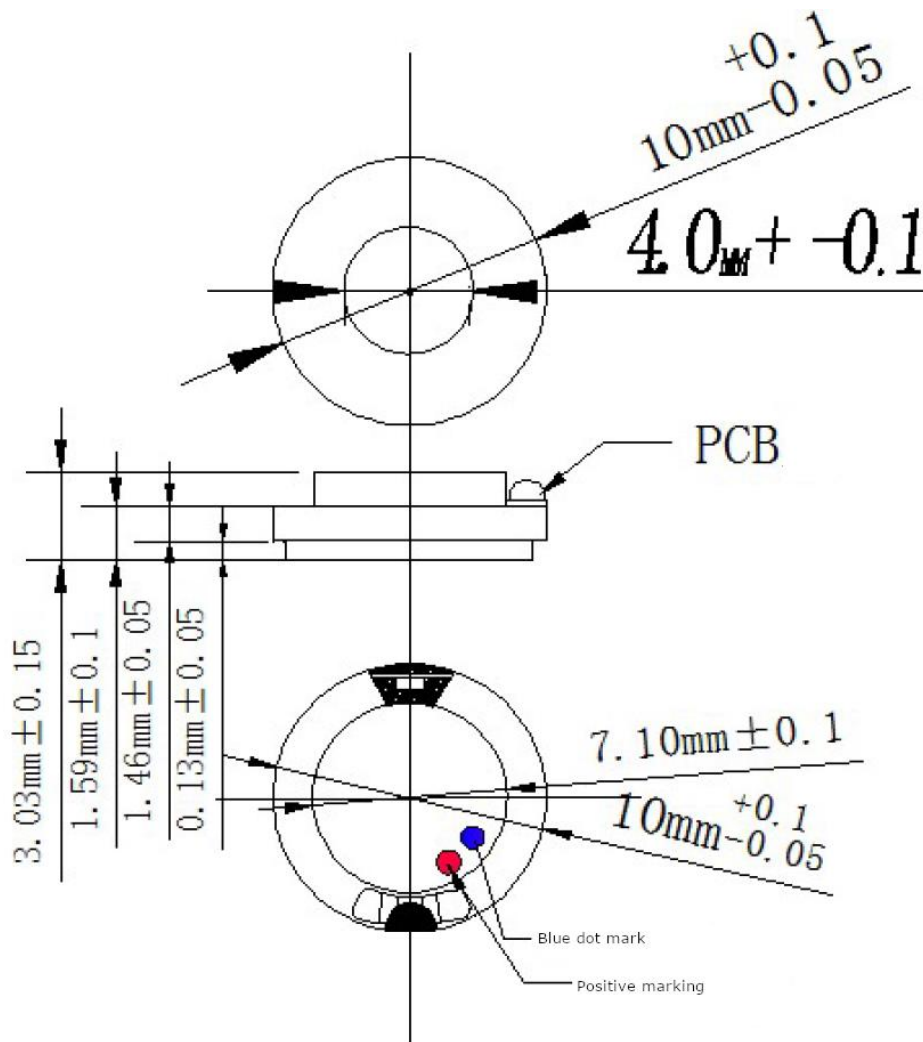


Reliability Testing

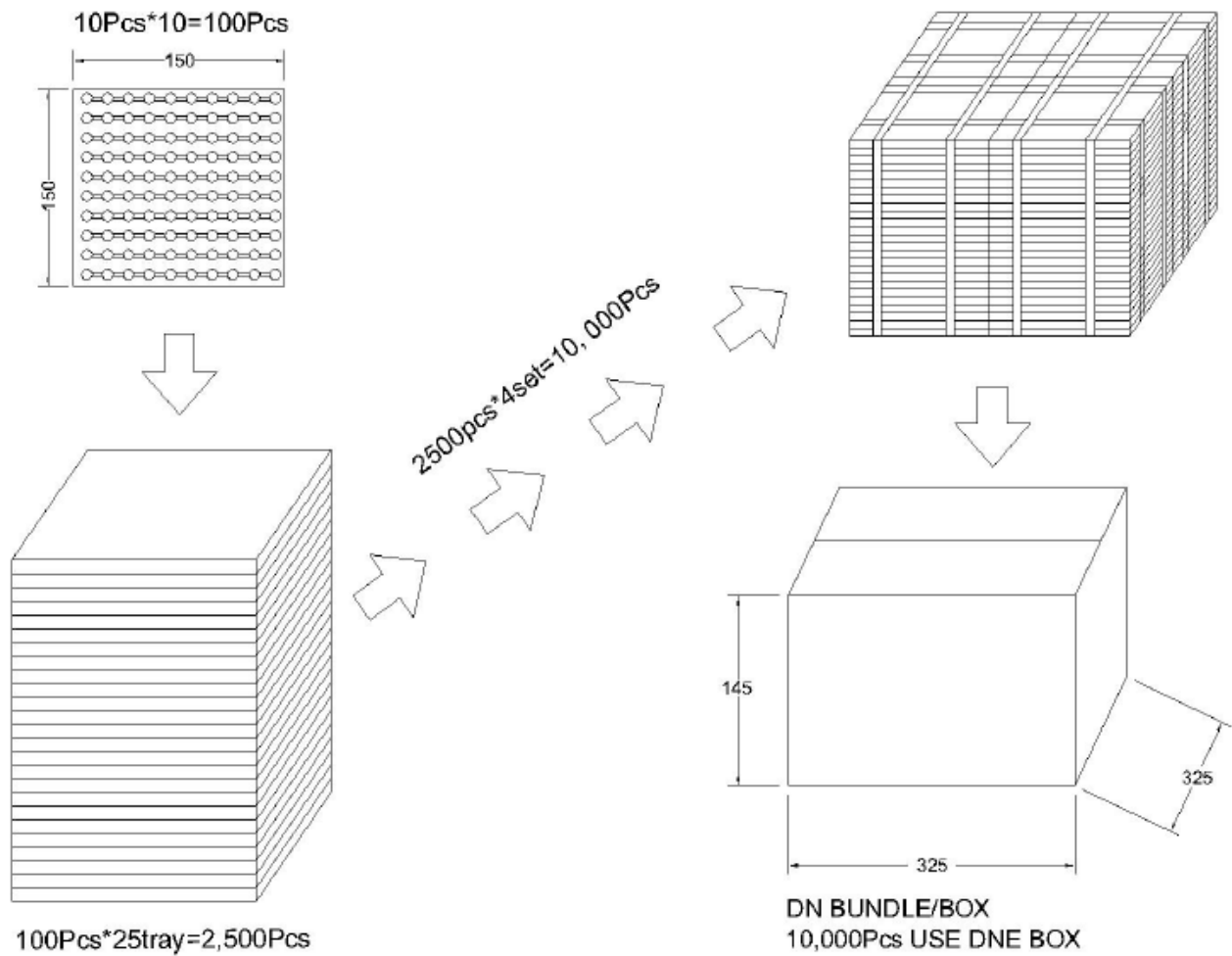
Type of Test	Test Specifications
High Temperature Test	96 hours at $+60^{\circ}\text{C} \pm 2^{\circ}\text{C}$
Low Temperature Test	96 hours at $-20^{\circ}\text{C} \pm 2^{\circ}\text{C}$
Humidity Test	96 hours at $+40^{\circ}\text{C} \pm 2^{\circ}\text{C}$ with relative humidity at 96% relative humidity
Temperature Cycle Testing	The part shall be subjected to 15 cycles. One cycle shall consist of $50^{\circ}\text{C} + 1^{\circ}\text{C} / 0.5\text{h} \rightarrow 20^{\circ}\text{C} / 0.5\text{h} \rightarrow -20^{\circ}\text{C} / 0.5\text{h} \rightarrow 20^{\circ}\text{C} / 0.5\text{h}$
Vibration Test	Frequency 30 ± 15 Hz, Amplitude 1.5 mm for 3 hours
Drop Test	100 cm free fall on concrete floor, 10 times

After each test, the speaker's SPL shall be ± 4 dB of the original SPL after 1 hour of recovery.

Dimensions



Packaging



Specifications Revisions

Revision	Description	Date	Approved
A	Released from Engineering	3/21/2025	JD

- Note:
- 1. Unless otherwise specified:
 - A. All dimensions are in millimeters.
 - B. Default tolerances are $\pm 0.5\text{mm}$ and angles are $\pm 3^\circ$.
 - 2. Specifications subject to change or withdrawal without notice.