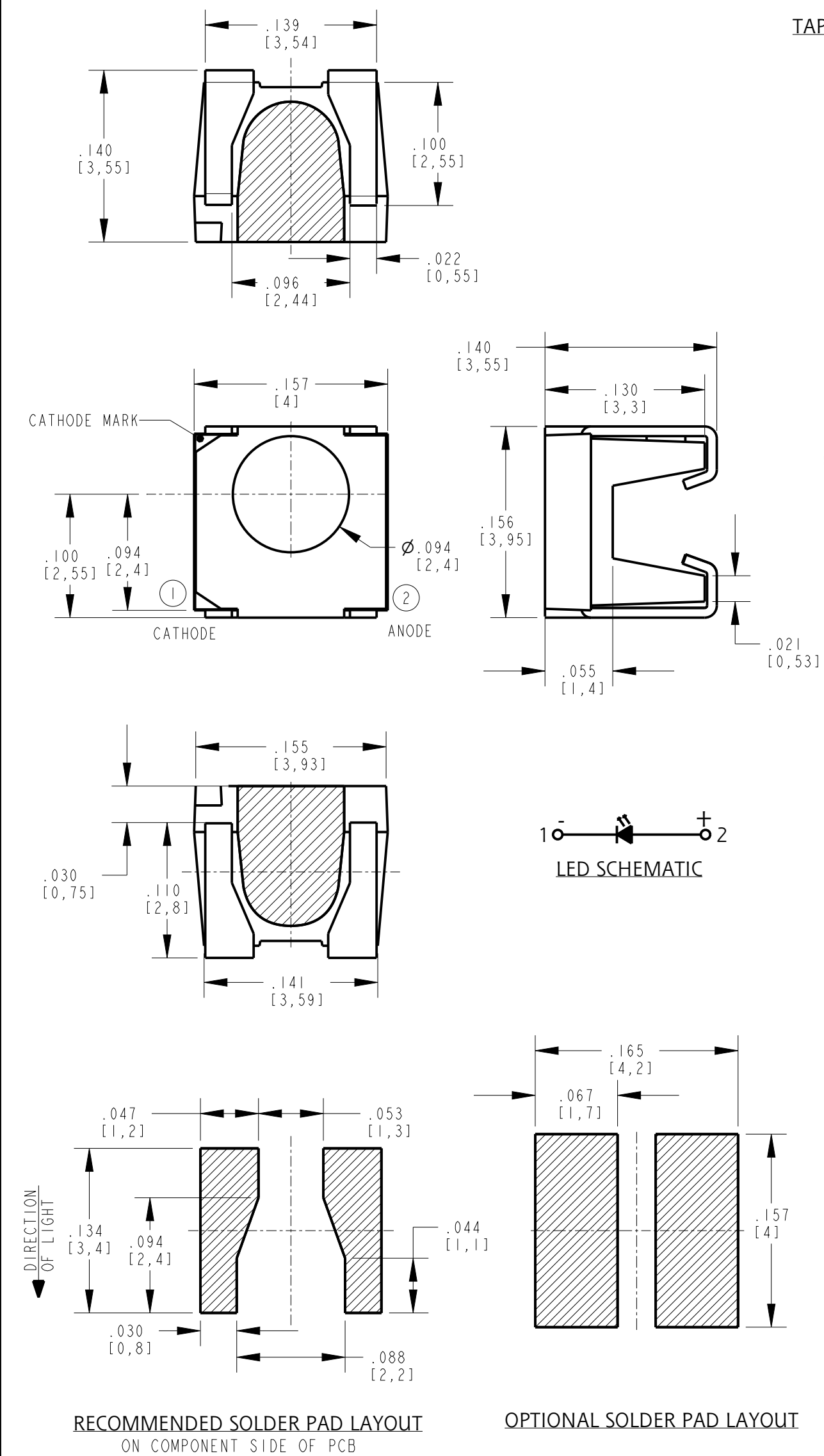


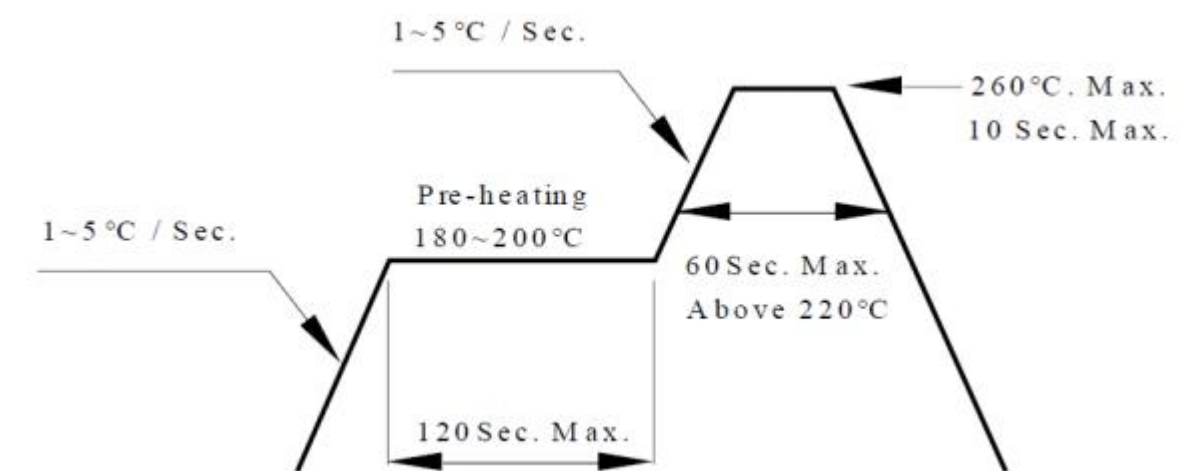
DIALIGHT PART NO.	LED COLOR (nm)	LENS COLOR
597-2001-807F	RED (630)	WATER CLEAR
597-2001-802F		
597-2301-807F	YELLOW GREEN(573)	
597-2301-802F		
597-2401-807F	YELLOW(590)	
597-2401-802F		

- NOTES:
- PIN NUMBERS ARE FOR REFERENCE ONLY, DESIGNATION NON-EXISTENT ON PART.
 - LABELING FOR REEL AND OUTSIDE OF ALUMINUM BAG, DIALIGHT P/N, QUANTITY PER REEL, DATE CODE, INTENSITY BIN CODE, LOT NUMBER AND COUNTRY OF ORIGIN.
 - THIS PRODUCT IS RoHS COMPLIANT. EACH BAG IS TO BE MARKED WITH RoHS COMPLIANT LABEL OR EQUIVALENT MARKINGS. LED MUST BE Pb FREE.
 - MOISTURE SENSITIVITY LEVEL 2A.
 - QUANTITY : PART NUMBERS END WITH 807F REFER AS 500 PCS/ REEL
PART NUMBERS END WITH 802F REFER AS 20 PCS/ STRIP

REV	ECN NO	REVISIONS	DRN	CKD	APP	DATE
A	106697	NEW RELEASE	JSG	NO	CS	05JUN23
B	108656	MSL LEVEL CHANGE 2A WAS 3. P/N 597-2301-807F & 802F INTENSITY CHANGE, MAX 15.0 WAS 9.0 mcd.	JSG	NO	CS	14AUG23



RECOMMENDED RoHS SOLDER PROFILE



ABSOLUTE MAXIMUM RATINGS AT 25°C							
LED COLOR	POWER DISSIPATON (mW)	FORWARD CURRENT (mA)	PEAK FORWARD CURRENT (mA)	REVERSE VOLTAGE (V)	OPERATING TEMPERATURE (°C)	STORAGE TEMPERATURE (°C)	DERATING CURVE (mA/°C)
RED	60	25	60 (1/10 DUTY CYCLE, 10ms PULSE WIDTH)	5	-40°C TO +100°C	-40°C TO +100°C	0.250
YELLOW GREEN	60	25		5	-40°C TO +100°C	-40°C TO +100°C	0.208
YELLOW	60	25		5	-40°C TO +100°C	-40°C TO +100°C	0.417

ELECTRO-OPTICAL CHARACTERISTICS AT 25°C										
LED COLOR	TEST CONDITION	LUMINOUS INTENSITY (mcd)		DOMINANT WAVELENGTH (nm)			REVERSE CURRENT	FORWARD VOLTAGE IF=2mA		VIEWING ANGLE (DEG)
	IF (mA)	MIN	MAX	MIN	TYP	MAX	MAX	MIN	MAX	
RED	2mA	4.5	11.2	617	630	634	10µA @ VR=5V	1.4	1.9	120
YELLOW GREEN		3.2	15.0	568	573	576		1.4	1.9	
YELLOW		4.5	11.3	585	590	595		1.4	1.9	



ATTENTION:
OBSERVE PRECAUTIONS FOR
HANDLING ELECTROSTATIC
SENSITIVE DEVICES

THIS DRAWING AND THE CONTENTS HEREIN ARE CONFIDENTIAL AND THE SOLE PROPERTY OF DIALIGHT CORP. REPRODUCTION OF THIS DRAWING OR CONSTRUCTION OF ANY PARTS WITHIN THIS DRAWING ARE FORBIDDEN WITHOUT THE WRITTEN CONSENT OF DIALIGHT CORP.		
DIALIGHT CORP INTERNAL REFERENCE ONLY : 3D MODEL : 45005972X0118- .3		
SCALE: 10.00	DRAWING NUMBER	
ALL DIM'S IN: INCHES (MM)	C-18674	
TOLERANCES: UNLESS OTHERWISE SPECIFIED	REV B	
FRACTIONS: ±1/64	TITLE	
DECIMALS (.XX): ±.01	SM 1616 RTANG LED WITH LENS	
DECIMALS (.XXX): ±.005	MATERIAL	
DECIMALS (.XXXX): ±.0005		
ANGLES: ±1°		
FINISH		
FSCM 83330		
SHEET 1 OF 1	FAMILY TABLE:	