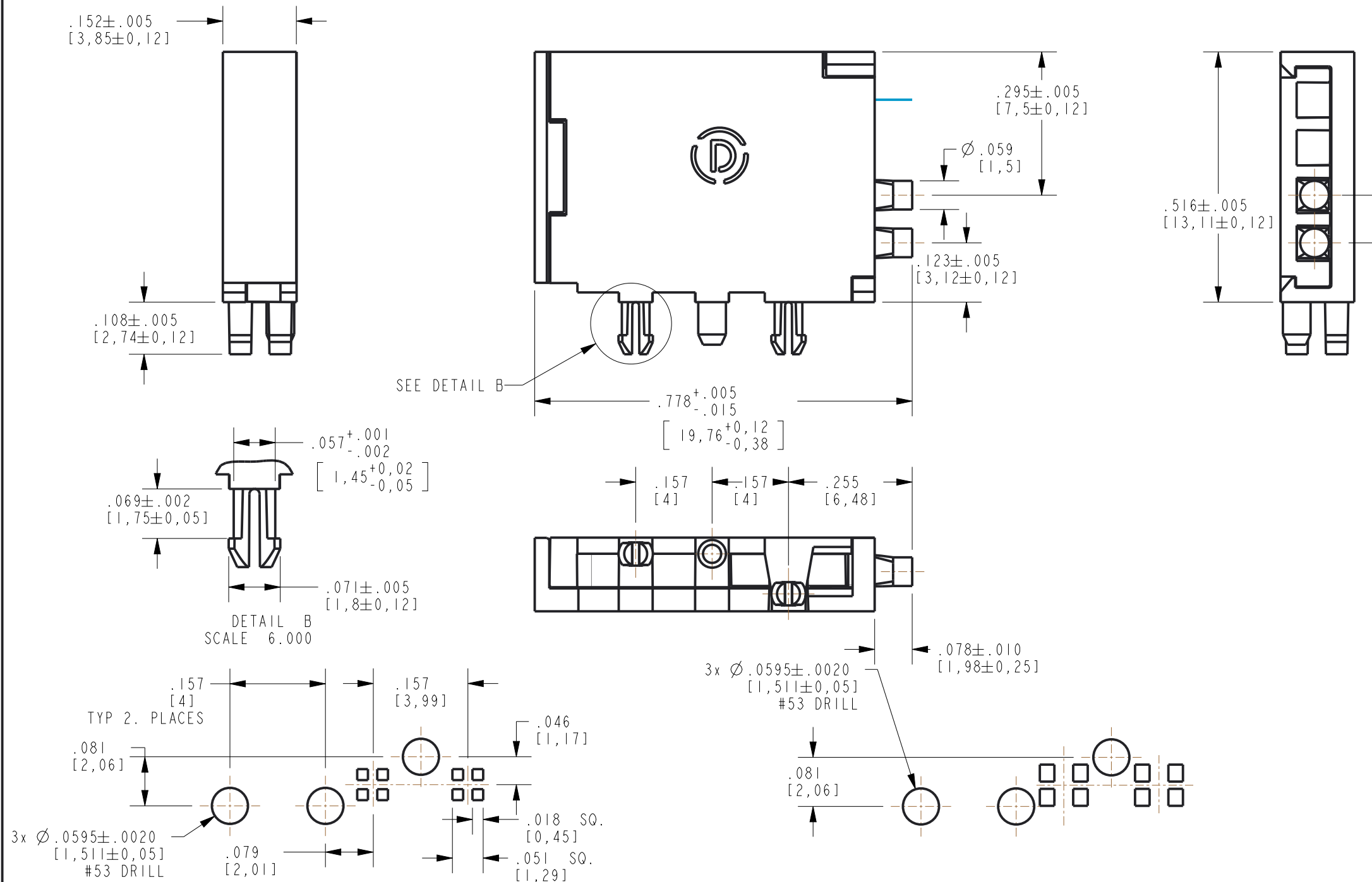
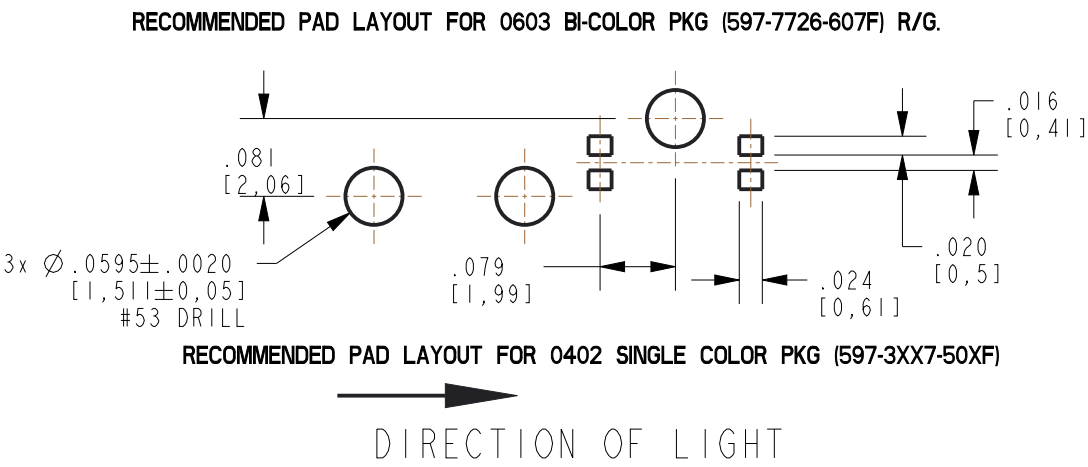
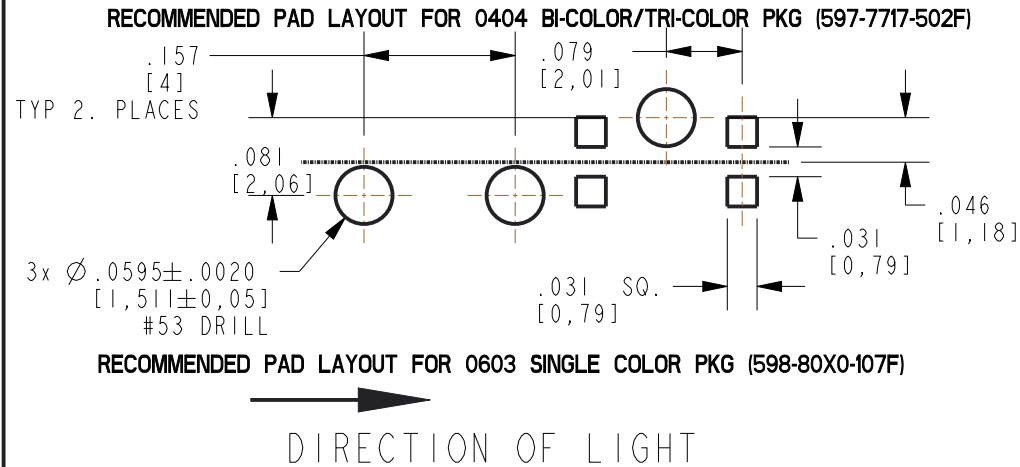


RoHS COMPLIANT 515-1232F LIGHT PIPE ASSEMBLY
Part Numbers with the "F" suffix ending are RoHS Compliant. Packaging is marked with "RoHS Compliant" label or equivalent markings.

REV	REVISIONS	DRN	APP	DATE
A	NEW RELEASE	BP	NO	6-29-17
B	ADDED MAX LED INSERT THICKNESS TO NOTES.	LD	NO	6-5-18
C	CORRECTED MODEL SHOWN	LD	SK	1-7-20
D	DIM .778 TOL WAS ±.005	LD	CS	6-8-22



- NOTES:
1. LIGHTPIPE MATERIAL TO BE CLEAR POLYCARBONATE OR EQUIVALENT. AS SPECIFIED BY DIALIGHT ENGINEERING DEPT.
 2. HOUSING AND COVER TO BE BLACK POLYCARBONATE OR EQUIVALENT. AS SPECIFIED BY DIALIGHT ENGINEERING DEPT.
 3. DIALIGHT P/N 515-1232F
 4. MAXIMUM LED THICKNESS FOR THIS LP ASSEMBLY IS .040"(1mm). SM PACKAGES 0402, 0404, 0603, SINGLE COLOR AND BI-COLOR OR SMALLER PACKAGES ARE RECOMMENDED.



THIS DRAWING AND THE CONTENTS HEREIN ARE CONFIDENTIAL AND THE SOLE PROPERTY OF DIALIGHT. REPRODUCTION OF THIS DRAWING OR CONSTRUCTION OF ANY PARTS WITHIN THIS DRAWING ARE FORBIDDEN WITHOUT THE WRITTEN CONSENT OF DIALIGHT.			
SCALE: 4.000	DRAWING NUMBER		REV
ALL DIM'S IN: INCHES (MM)	C-18331		D
TOLERANCES: UNLESS OTHERWISE SPECIFIED	TITLE		
FRACTIONS: ±1/64	LP 2 HIGH/ BARRIER ASSEMBLY		
DECIMALS (.XX): ±.01	MATERIAL		
DECIMALS (.XXX): ±.003			
DECIMALS (.XXXX): ±.0005			
ANGLES: ±1°			
FINISH:			
FSCM	83330		
SHEET 1 OF 1		FAMILY TABLE:	