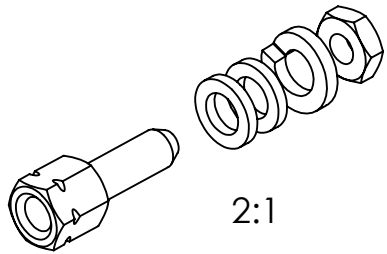
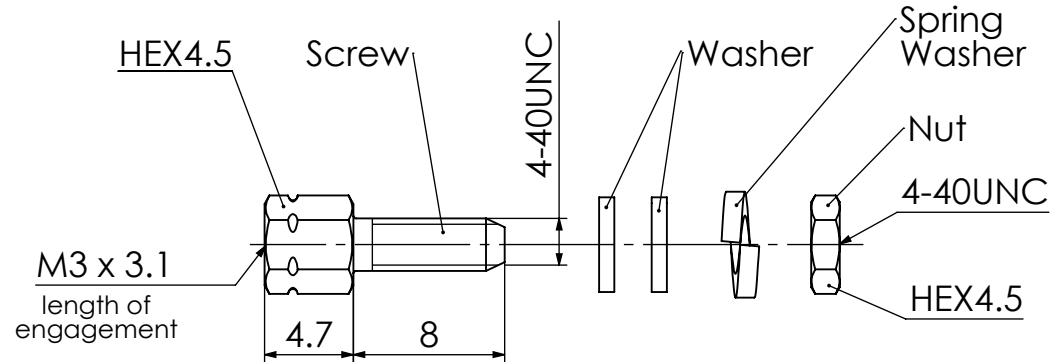


COMMENT:  
ALL RIGHTS ARE RESERVED BY US FOR THIS DRAWING. WITHOUT OUR PRIOR CONSENT,  
IT MAY NEITHER BE DUBLICATED NOR MADE AVAILABLE TO A THIRD PARTY,  
AND IT ALSO MAY NOT BE IMPROPERLY USED BY TE RECEIVER, OR A THIRD PARTY.



RoHS compliant  
by exemption



1731121157	F-GSCH1/5-3858	Brass (nonmagnetic)	tin plated (nonmagnetic)	1	2	-	1
1731121344	F62M033S253+S	Steel (Lead free) 2)	zinc plated 1)	1	-	-	-
1731120561	F-GSCH1/5-K127		zinc plated 1)	1	2	1	1
1731121343	F62M033S245+S	Steel	tin plated	1	-	-	-
1731121189	F-GSCH1/5-K959		zinc plated 1)	1	2	1	1 (HEX 5)
1731121166	F-GSCH1/5-K127SSN		tin plated	1	2	1	1
1731120586	F-GSCH1/5-K127SN		tin plated	1	2	1	1
<i>Material Number</i>	<i>FCT Part Number</i>	<i>Material</i>	<i>Surface</i>	<i>Screw (pc.)</i>	<i>Washer (pc.)</i>	<i>Spring Washer (pc.)</i>	<i>Nut (pc.)</i>

## FUNCTIONAL SYMBOLS

$$\begin{aligned} F_A &= 0 \\ F_C &= 0 \\ F_P &= 0 \end{aligned}$$

THIS DRAWING CONTAINS INFORMATION THAT IS PROPRIETARY TO MOLEX ELECTRONIC TECHNOLOGIES, LLC AND SHOULD NOT BE USED WITHOUT WRITTEN PERMISSION

DIMENSION UNITS

mm

SCALE  
2:1

MEASUREMENTS WITHOUT  
TOLERANCE ACC. TO  
ISO 2768-mK

CURRENT REVISION

DRWN: DRAWN BY    mteubel                      03-06-2025

APPR: APPR BY mteubel 04-06-2025

INITIAL REVISION

DRWN: DRAWN BY	Denzinger	01-07-2002
----------------	-----------	------------

REPLACEMENT FOR:



DRAWING

A4-SIZE

**molex**

FCT-Female Screw Lock  
F-GSCH1/5-K127 /-K959 / -3858

PRODUCT CUSTOMER DRAWING

MATERIAL NUMBER	
-----------------	--

2 | see table

REVISION

7

DOCUMENT NUMBER
-----------------

F62M033\_D

CUSTOMER

GENERAL MARKET

SHEET

NUMBER  
1 OF 1

Generally twice a material number respectively FCT part number is needed per connector.

Packaging specification: 1731120003-PK

1) With tension control fluid

2) RoHS compliant