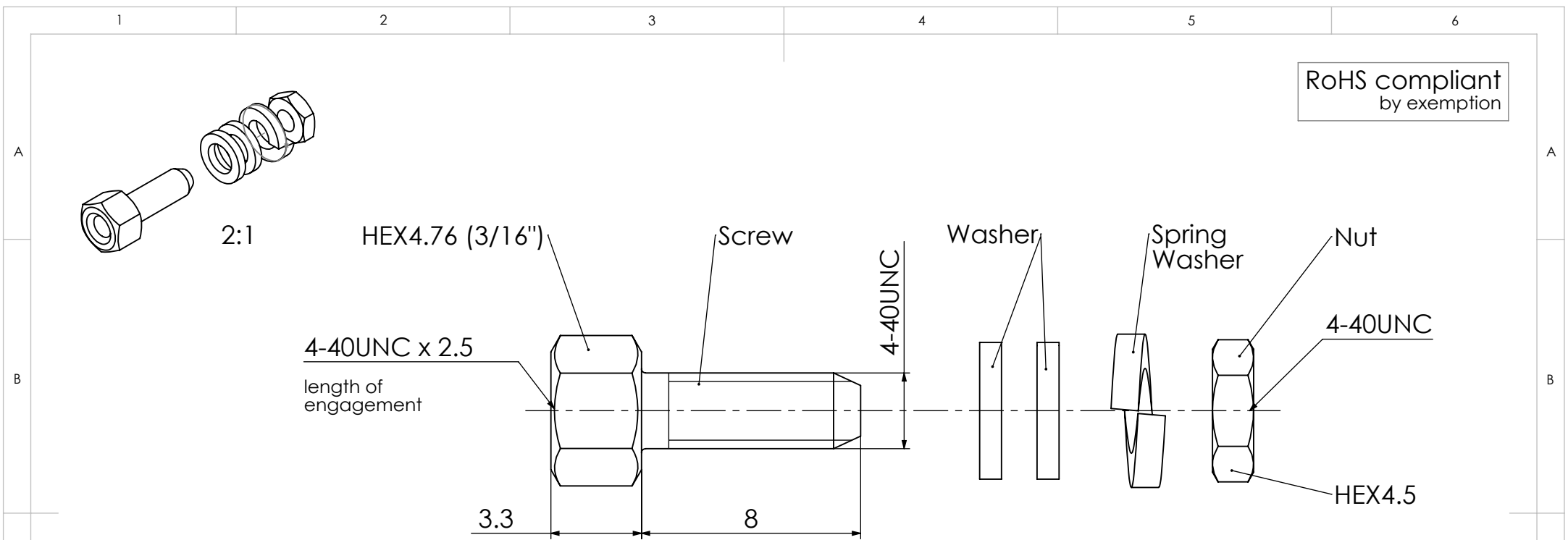


COMMENT:
ALL RIGHTS ARE RESERVED BY US FOR THIS DRAWING. WITHOUT OUR PRIOR CONSENT,
IT MAY NEITHER BE DUBLICATED NOR MADE AVAILABLE TO A THIRD PARTY,
AND IT ALSO MAY NOT BE IMPROPERLY USED BY TE RECEIVER, OR A THIRD PARTY.




1731121096	F62M086S253+S	Steel (Lead free) 2)	zinc plated 1)	1	-	-	-	C
1731120245	F-GSCH1/5-K1092		zinc plated 1)	1	2	1	1	
1731120600	F-GSCH1/5-K1092SN	Steel	tin plated	1	2	1	1	
<i>Material Number</i>	<i>FCT Part Number</i>	<i>Material</i>	<i>Surface</i>	<i>Screw (pc.)</i>	<i>Washer (pc.)</i>	<i>Spring Washer (pc.)</i>	<i>Nut (pc.)</i>	

Generally twice a material number respectively FCT part number is needed per connector.

Packaging specification: 1731120003-PK

- 1) With tension control fluid
- 2) RoHS complaint

FUNCTIONAL SYMBOLS	THIS DRAWING CONTAINS INFORMATION THAT IS PROPRIETARY TO MOLEX ELECTRONIC TECHNOLOGIES, LLC AND SHOULD NOT BE USED WITHOUT WRITTEN PERMISSION									
	DIMENSION UNITS		SCALE		MEASUREMENTS WITHOUT TOLERANCE ACC. TO ISO 2768-mK			<div>molex</div> <div>FCT Female Screw Lock F-GSCH1/5-K1092</div>		
	mm		5:1							
			CURRENT REVISION							
			DRWN: DRAWN BY mteubel 03-06-2025							
			APPR: APPR BY mteubel 04-06-2025							
						PRODUCT CUSTOMER DRAWING				
	2 24410 / 24420		INITIAL REVISION							
	1		DRWN: DRAWN BY Denzinger 24-09-2002			MATERIAL NUMBER		REVISION		
	REV. CH.-NO.		APPR: APPR BY dittel 24-09-2002			see table		2		
REPLACEMENT FOR: 1731120245_Rev.A1			FIRST ANGLE PROJECTION 		DRAWING A4-SIZE		DOCUMENT NUMBER F62M086 D		CUSTOMER GENERAL MARKET	SHEET NUMBER 1 OF 1