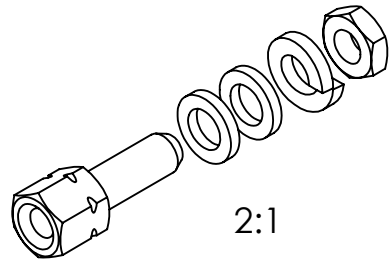
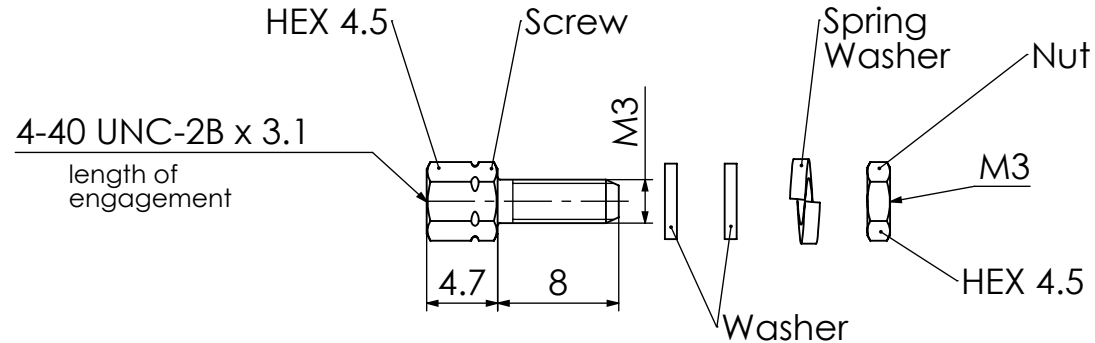


COMMENT:
ALL RIGHTS ARE RESERVED BY US FOR THIS DRAWING. WITHOUT OUR PRIOR CONSENT,
IT MAY NEITHER BE DUBLICATED NOR MADE AVAILABLE TO A THIRD PARTY,
AND IT ALSO MAY NOT BE IMPROPERLY USED BY TE RECEIVER, OR A THIRD PARTY.



RoHS compliant



1731121340	F62M032E200+S	Stainless steel	blank	1	-	-	-
1731121884	F62M032S6Z02+S	Steel (Lead free)	zinc plated 1)	1	-	-	-
1731121078	F62M032S200+S		blank	1	-	-	-
1731121341	F62M032S245+S		tin plated	1	-	-	-
1731121013	F62M032S253+S		zinc plated 1)	1	-	-	-
1731121165	F-GSCH1/5-K126SSN		tin plated	1	2	1	1
1731120273	F-GSCH1/5-K126SN		tin plated	1	2	1	1
1731121003	F-GSCH1/5-K126S		zinc plated 1)	1	2	1	1
1731120377	F-GSCH1/5-K126		zinc plated 1)	1	2	1	1
<i>Material Number</i>	<i>FCT Part Number</i>	<i>Material</i>	<i>Surface</i>	<i>Screw (pc.)</i>	<i>Washer (pc.)</i>	<i>Spring Washer (pc.)</i>	<i>Nut (pc.)</i>

FUNCTIONAL SYMBOLS

$$\begin{aligned} \nabla_A &= 0 \\ \nabla_C &= 0 \\ \nabla_P &= 0 \end{aligned}$$

THIS DRAWING CONTAINS INFORMATION THAT IS PROPRIETARY TO MOLEX ELECTRONIC TECHNOLOGIES, LLC AND SHOULD NOT BE USED WITHOUT WRITTEN PERMISSION

DIMENSION UNITS
mm

SCALE
2:1

MEASUREMENTS WITHOUT
TOLERANCE ACC. TO
ISO 2768-mK

CURRENT REVISION

DRWN: DRAWN BY	mteubel	07-04-2025
APPR: APPR BY	msteinbrueck	07-04-2025

INITIAL REVISION

DRWN: DRAWN BY	schref	04-09-2002
APPR: APPR BY	Floßmann	05-09-2002

REPLACEMENT FOR:

FIRST ANGLE PROJECTION



DRAWING

A4-SIZE

	molex	
	FCT Female Screw Lock F-GSCH1/5-K126	
	PRODUCT CUSTOMER DRAWING	
5 5	MATERIAL NUMBER	REVISION
2 2	see table	8
	DOCUMENT NUMBER	SHEET NUMBER
	F62M032 D	1 OF 1
	CUSTOMER	
	GENERAL MARKET	