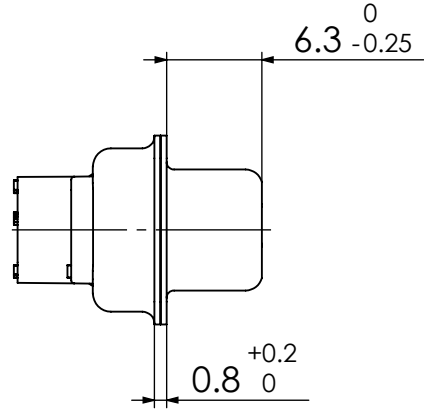
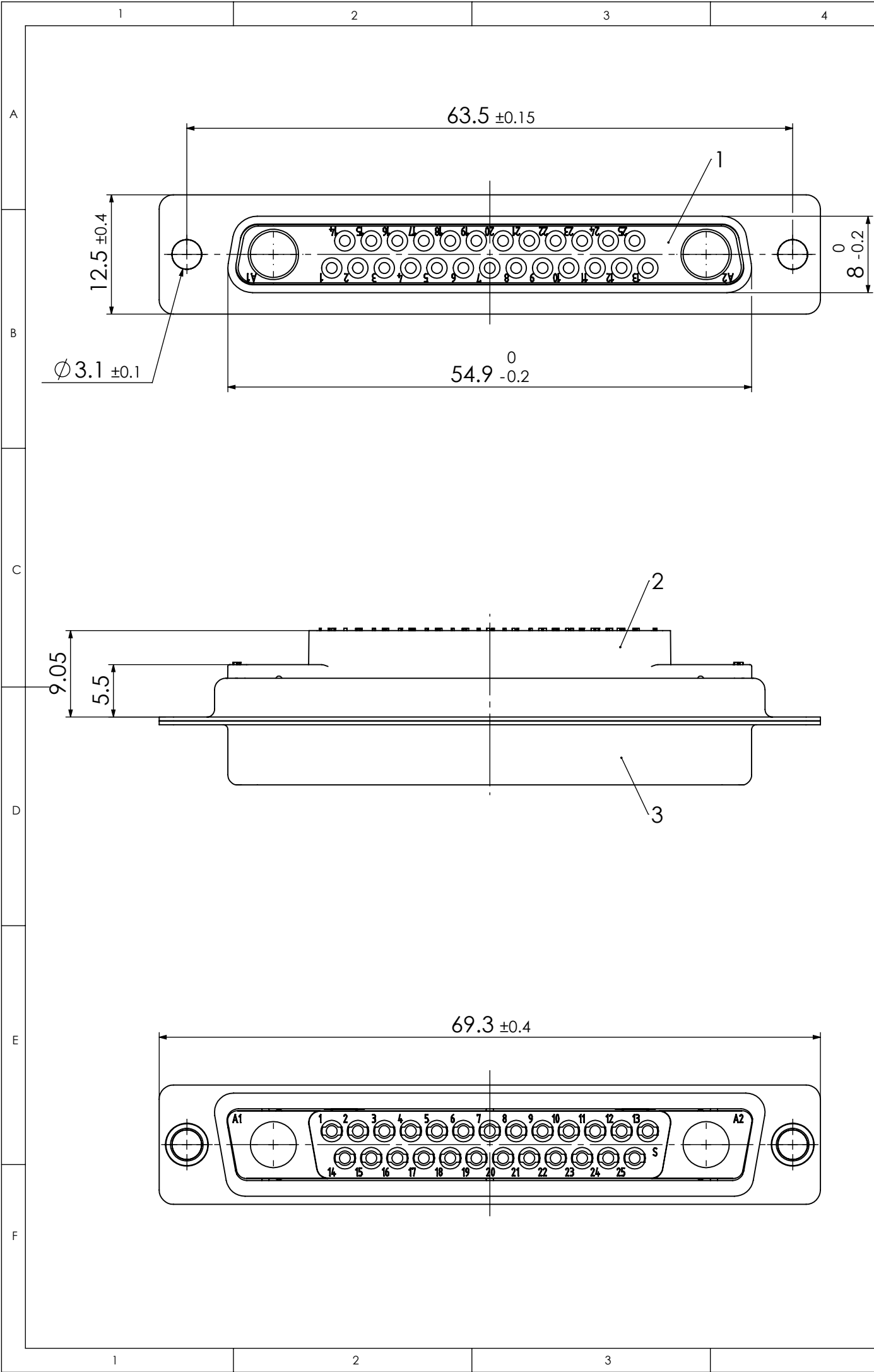


COMMENT:  
ALL RIGHTS ARE RESERVED BY US FOR THIS DRAWING. WITHOUT OUR PRIOR CONSENT,  
IT MAY NEITHER BE DUPLICATED NOR MADE AVAILABLE TO A THIRD PARTY.  
AND IT ALSO MAY NOT BE IMPROPERLY USED BY THE RECEIVER, OR A THIRD PARTY.



\*) y for series FU or FL

Material Number	y *)
1731070396	U
1731070691	L

Technical data for standard (FU).  
Crimp contacts FK20S (AWG 20-24/1,3µm Au) included in delivery.

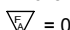
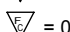
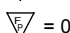
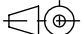
3	1	Shell	Steel	tin plated
2	1	Insulator rear part	PEI (-55°C to +130°C) acc. UL94V-0	green
1	1	Insulator front part	PBT acc. UL94V-0	green
No.	St.	Part	Type Description/Material	Surface plating/Colour/Class

RoHS compliant  
by exemption

Technical data for standard (FL).  
Crimp contacts not supplied with connector. Contacts must be ordered separately.

3	1	Shell	Steel	tin plated
2	1	Insulator rear part	PA (-55°C to +115°C) acc. UL94V-0	black
1	1	Insulator front part	PBT acc. UL94V-0	black
No.	St.	Part	Type Description/Material	Surface plating/Colour/Class

RoHS compliant

FUNCTIONAL SYMBOLS <div> = 0</div> <div> = 0</div> <div> = 0</div>	THIS DRAWING CONTAINS INFORMATION THAT IS PROPRIETARY TO MOLEX ELECTRONIC TECHNOLOGIES, LLC AND SHOULD NOT BE USED WITHOUT WRITTEN PERMISSION											
	DIMENSION UNITS mm		SCALE 2:1		MEASUREMENTS WITHOUT TOLERANCE ACC. TO ISO 2768-m			<div>molex</div> <div>FCT D-Sub Crimp Connector</div>				
					CURRENT REVISION							
					DRWN: DRAWN BY fvetter 26-10-2020			<div>PRODUCT CUSTOMER DRAWING</div> <div>MATERIAL NUMBER see table</div> <div>REVISION 2</div>				
				APPR: APPR BY MTeubel 26-10-2020								
2		24130		INITIAL REVISION								
1				DRWN: DRAWN BY sschref 12-07-2011								
REV.		CH.-NO.		APPR: APPR BY Birgit.Rinder 12-07-2011			DOCUMENT NUMBER Fy27W2S7-K121			CUSTOMER GENERAL MARKET		SHEET NUMBER 1 OF 1
REPLACEMENT FOR:		FRIST ANGLE PROJECTION 		DRAWING A3-SIZE								