

ALL TOLERANCES =  $\pm 0.3$   
UNLESS OTHERWISE INDICATED

DESIGNED TO ACCOMMODATE STANDARD:  
D-SUB - Shell Size 3

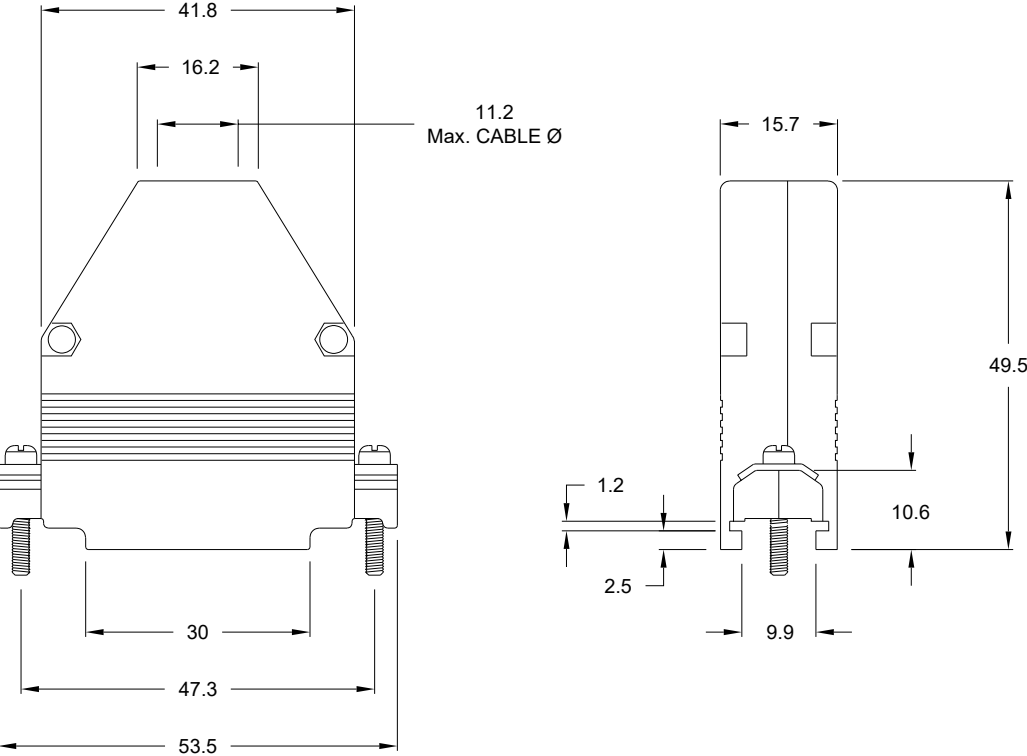
BACKSHELL KIT INCLUDES:

- 2 - BACKSHELL HALVES
- 2 - MATING SCREWS (#4-40, RECOMMENDED TORQUE 60 in-oz)
- 2 - SADDLE WASHERS
- 2 - HOUSING SCREWS (#4-40, RECOMMENDED TORQUE 5.2 in-lbs)
- 2 - HOUSING NUTS (#4-40, RECOMMENDED TORQUE 5.2 in-lbs)
- 1 - GROMMET TREE - VARIOUS SIZES (NON-CONDUCTIVE GROMMETS)

MATERIAL: DIE-CAST ZINC ALLOY  
PLATING: NICKEL (5u" MIN PLATING THICKNESS)  
OPERATING TEMPERATURE: -45°C TO +120°C

979-025-030R121

- SERIES
- POSITIONS
- 025
- MATERIAL
- 030 = ZINC
- RoHS COMPLIANT
- R = HIGH TEMP. PROCESS
- PLATING
- 12 = NICKEL
- PUT-UPS
- 1 = KIT



RoHS COMPLIANT

DRAWN:  
C. SMITH  
DATE:  
4/20/2010

UNITS = mm

DO NOT SCALE FROM DRAWING

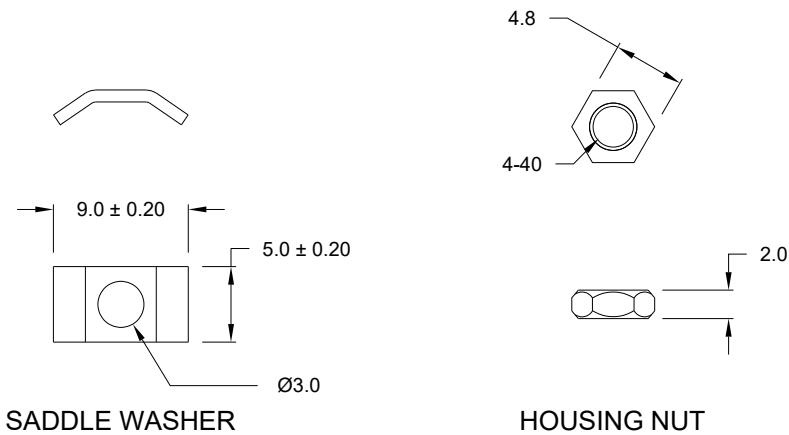
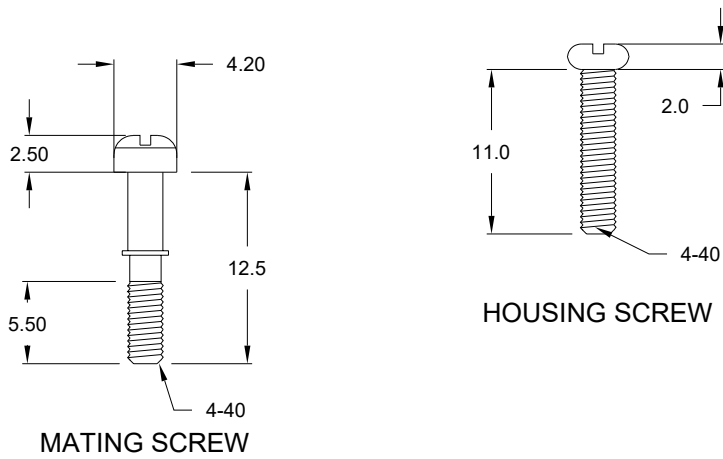


THESE DRAWINGS AND SPECIFICATIONS ARE THE PROPERTY OF NorComp AND SHALL NOT BE REPRODUCED, COPIED OR USED AS THE BASIS FOR THE MANUFACTURE OR SALE OF APPARATUS WITHOUT WRITTEN PERMISSION.

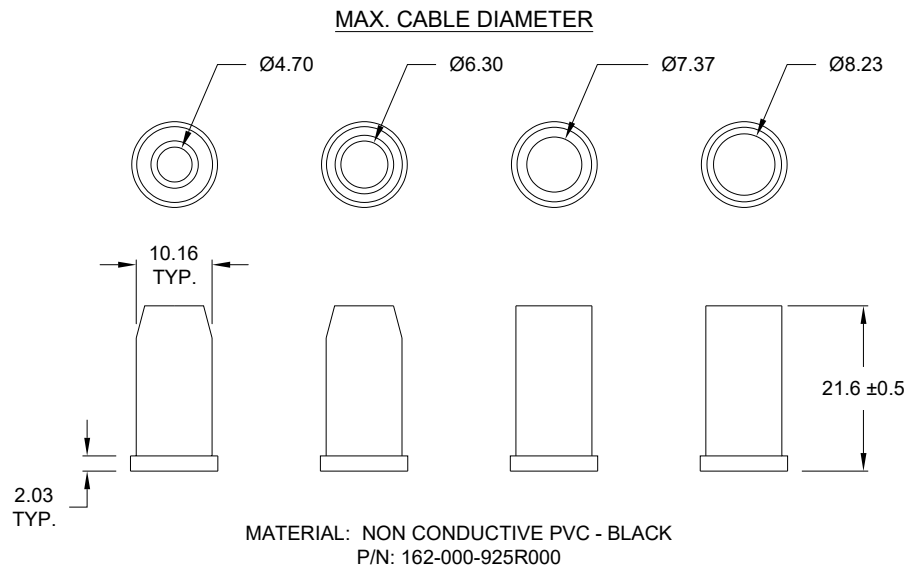
NorComp

SCALE: NTS SHEET 1 OF 2 REV 7

DWG NO. 979-025-030R121



ALL HARDWARE:  
MATERIAL = STEEL  
PLATING = NICKEL



RoHS COMPLIANT



THESE DRAWINGS AND SPECIFICATIONS ARE THE PROPERTY OF NorComp AND SHALL NOT BE REPRODUCED, COPIED OR USED AS THE BASIS FOR THE MANUFACTURE OR SALE OF APPARATUS WITHOUT WRITTEN PERMISSION.

DRAWN:  
C. SMITH

DATE:  
4/20/2010

UNITS = mm

DO NOT SCALE FROM DRAWING

NorComp

SCALE:  
NTS

SHEET 2 OF 2

REV 7

DWG NO.

979-025-030R121