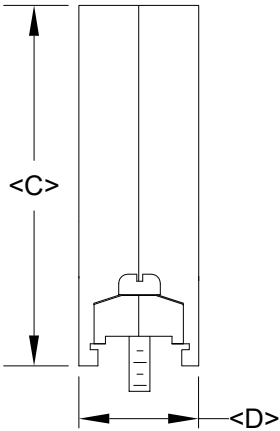
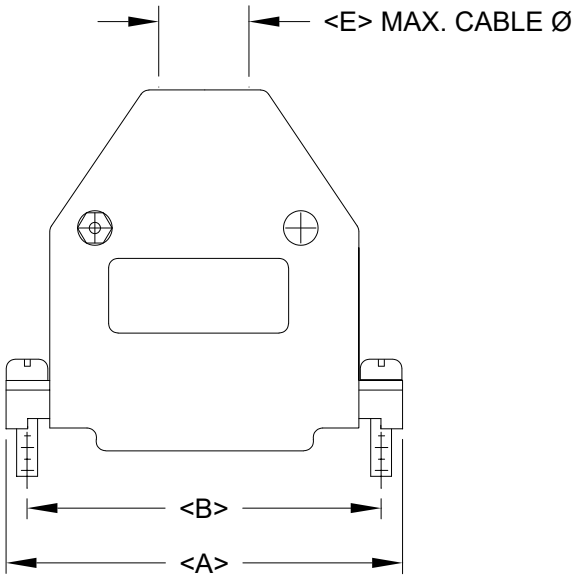


MATERIAL: ABS PLASTIC, UL 94HB
RECOMMENDED OPERATING TEMPERATURE: -20°C TO +80°C



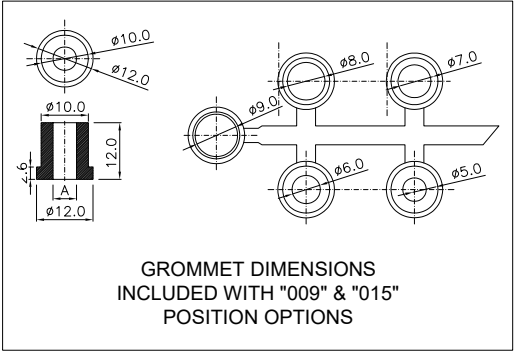
BACK SHELL KIT INCLUDES:

- 2 - BACK SHELL HALVES
- 2 - MATING SCREWS (#4-40, RECOMMENDED TORQUE 60 in-oz)
- 2 - SADDLE WASHERS
- 2 - HOUSING SCREWS (#4-40, RECOMMENDED TORQUE 5.2 in-lbs)
- 2 - HOUSING NUTS (#4-40, RECOMMENDED TORQUE 5.2 in-lbs)
- 1 - GROMMET TREE - VARIOUS SIZES (NON-CONDUCTIVE GROMMETS)

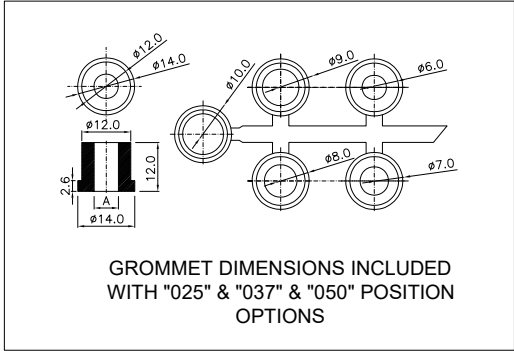
979-YYY-010R031

SERIES _____
POSITIONS _____
009
015
025
037
050
MATERIAL _____
010 = PLASTIC
COLOR _____
03 = GREY
PUT-UPS _____
1 = KIT

DIMENSIONS (mm)					
SIZE	A ^{±0.015}	B ^{±0.010}	C ^{±0.015}	D ^{±0.015}	E
009	31.28	24.99	48.60	16.66	9.00
015	39.50	33.32	48.13	17.00	9.50
025	53.34	47.04	44.80	16.64	10.00
037	69.80	63.50	48.26	16.64	13.00
050	68.50	61.11	48.26	19.56	13.00



GROMMET DIMENSIONS INCLUDED WITH "009" & "015" POSITION OPTIONS



GROMMET DIMENSIONS INCLUDED WITH "025" & "037" & "050" POSITION OPTIONS

RoHS COMPLIANT



THESE DRAWINGS AND SPECIFICATIONS ARE THE PROPERTY OF NorComp AND SHALL NOT BE REPRODUCED, COPIED OR USED AS THE BASIS FOR THE MANUFACTURE OR SALE OF APPARATUS WITHOUT WRITTEN PERMISSION.

DRAWN: P. JENKINS
DATE: 07/28/2005

UNITS = mm

DO NOT SCALE FROM DRAWING

NorComp

SCALE: NTS
SHEET 1 OF 1
REV 8
DWG NO. 979-YYY-010R031