

SPECIFICATIONS:

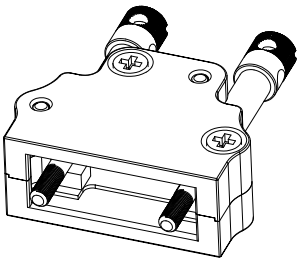
MATERIALS:	
BACKSHELL:	ZAMAK 5, NO PLATING
JACK SCREW:	NICKEL PLATED STEEL
HOUSING SCREW:	NICKEL PLATED STEEL
	0.3 N*m MAX
GROMMET:	ABS UL94 V-0, BLACK
ENVIRONMENT:	
OPERATING TEMPERATURE:	-40°C TO +85°C (WITH GROMMETS)
	-40°C TO +125°C (WITHOUT GROMMETS)

BACKSHELL KIT INCLUDES:

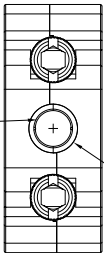
- (2X) BACKSHELL ①
- (2X) JACK SCREW ②
- (1X) GROMMET TREE ③
- (4X) HOUSING SCREW ④

INTENDED TO BE USED WITH
NORCOMP 380 SERIES OR
580-M SERIES CONNECTORS

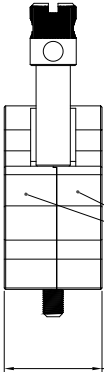
ALSO COMPATIBLE WITH
COMPETITOR CONNECTOR
SERIES BELOW:
Glenair MWDM Series
Cannon MDM Series
TE MCKS Series
Cinch Dura-Con Series
Omnetics Micro D Connectors
MILNEC MDS1 Series
Airborn MM Series



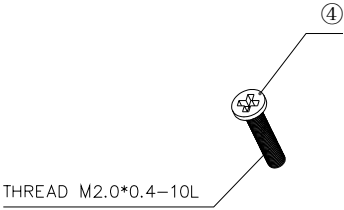
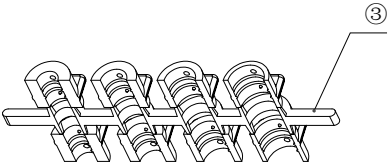
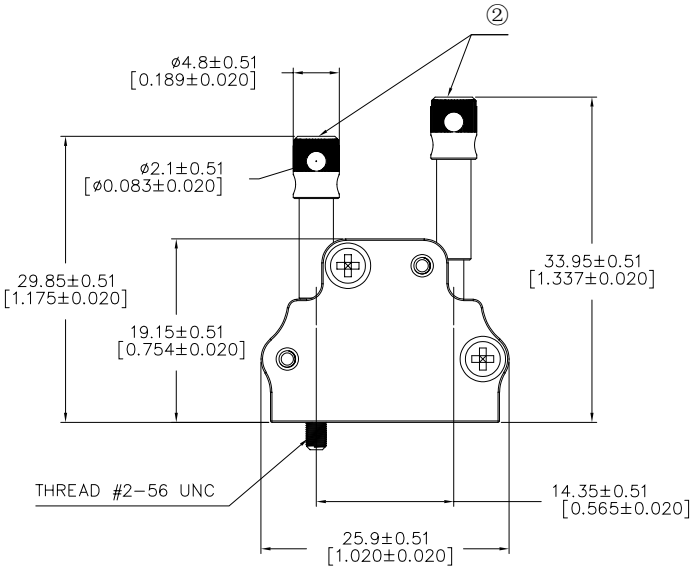
THE DIAMETER OF THE
WIRE CORRESPONDING TO
GROMMET TREE Ø
0.095[2.42]
0.117[2.97]
0.138[3.52]
0.160[4.06]



Ø5.10±0.25
[Ø0.200±.0098]
Diameter of cable
exit without grommets



10.2±0.51
[0.402±0.020]



RoHS COMPLIANT



THESE DRAWINGS AND SPECIFICATIONS ARE THE PROPERTY OF NorComp AND SHALL NOT BE REPRODUCED, COPIED OR USED AS THE BASIS FOR THE MANUFACTURE OR SALE OF APPARATUS WITHOUT WRITTEN PERMISSION.

DRAWN:
J. KADEL

DATE:
06/10/2024

UNITS = mm [inch]

DO NOT SCALE FROM DRAWING

NorComp

SCALE:
NTS

SHEET 1 OF 1

REV 4

DWG NO. 966-009-030R121