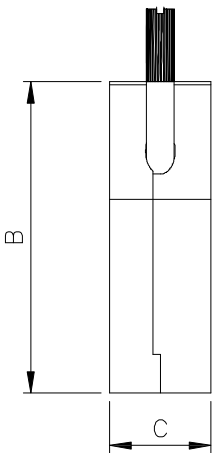
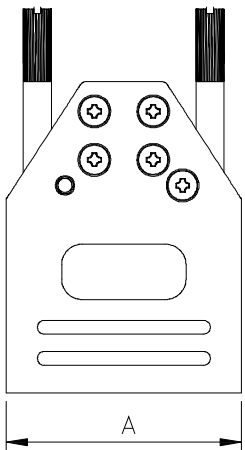
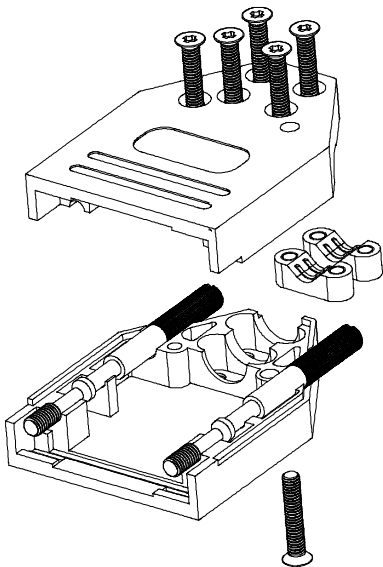
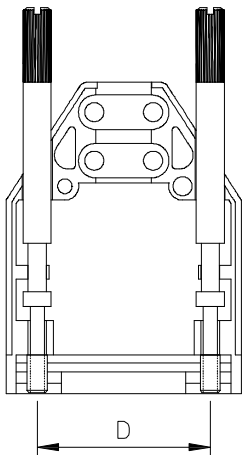


DESCRIPTION: STRAIGHT ENTRY BACKSHELL - CLAMP STRAIN RELIEF



NOT SUITABLE IF USING  
THIS 961 SERIES ON BOTH  
CONNECTORS IN A CABLE  
TO CABLE MATING  
APPLICATION



BACKSHELL MATERIAL:  
PLATING:  
JACKSCREWS:  
CLAMP SCREWS:  
CLAMPS:  
OPERATING TEMP:

DIE-CAST ZINC ALLOY  
NICKEL  
STEEL:NICKEL PLATED  
STEEL:ZN PLATED  
ZINC DIE CAST  
-40°C TO+120°C

DIMENSIONS						
SIZE		A	B	C	D	MAX WIRE DIAMETER (W/O CLAMPS)
TOLERANCE		±0.50MM/ ±0.02IN	±0.50MM/ ±0.02IN	±0.50MM/ ±0.02IN	±0.25MM/ ±0.01IN	-
9	MM	34.0	45.0	14.6	24.99	8.0
	IN	1.34	1.77	0.57	0.98	0.314
15	MM	43.0	45.0	14.6	33.32	11.6
	IN	1.69	1.77	0.57	1.31	0.456
25	MM	56.5	45.0	14.6	47.04	11.6
	IN	2.22	1.77	0.57	1.85	0.456
37	MM	73.0	45.0	14.6	63.50	11.6
	IN	2.87	1.77	0.57	2.50	0.456
50	MM	71.0	45.0	17.4	61.00	14.0
	IN	2.80	1.77	0.69	2.40	0.551

961-YYY-030R121

009 = 9 POSITION  
015 = 15 POSITION  
025 = 25 POSITION  
037 = 37 POSITION  
050 = 50 POSITION

BACKSHELL KIT INCLUDES:  
  
(2) BACKSHELL HALVES  
(2) 4-40 THUMBSCREWS  
(6) CLAMP SCREWS (RECOMMENDED TORQUE 3 in-lbs)  
(2) CLAMPS

RoHS COMPLIANT



THESE DRAWINGS AND SPECIFICATIONS ARE  
THE PROPERTY OF NorComp AND SHALL NOT  
BE REPRODUCED, COPIED OR USED AS THE  
BASIS FOR THE MANUFACTURE OR SALE OF  
APPARATUS WITHOUT WRITTEN PERMISSION.

DRAWN:  
J. KADEL

DATE:  
11/13/2018

UNITS = INCHES [MM] DO NOT SCALE FROM DRAWING

NorComp

SCALE:  
NTS

SHEET OF  
1 1

REV  
3

DWG NO. 961-YYY-030R121