

DESCRIPTION: M8 // FEMALE // RIGHT ANGLE PCB MOUNT PANEL MOUNT

SPECIFICATIONS:

MATERIALS:

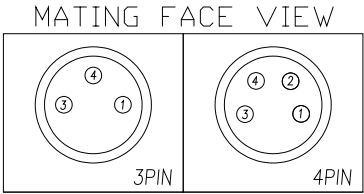
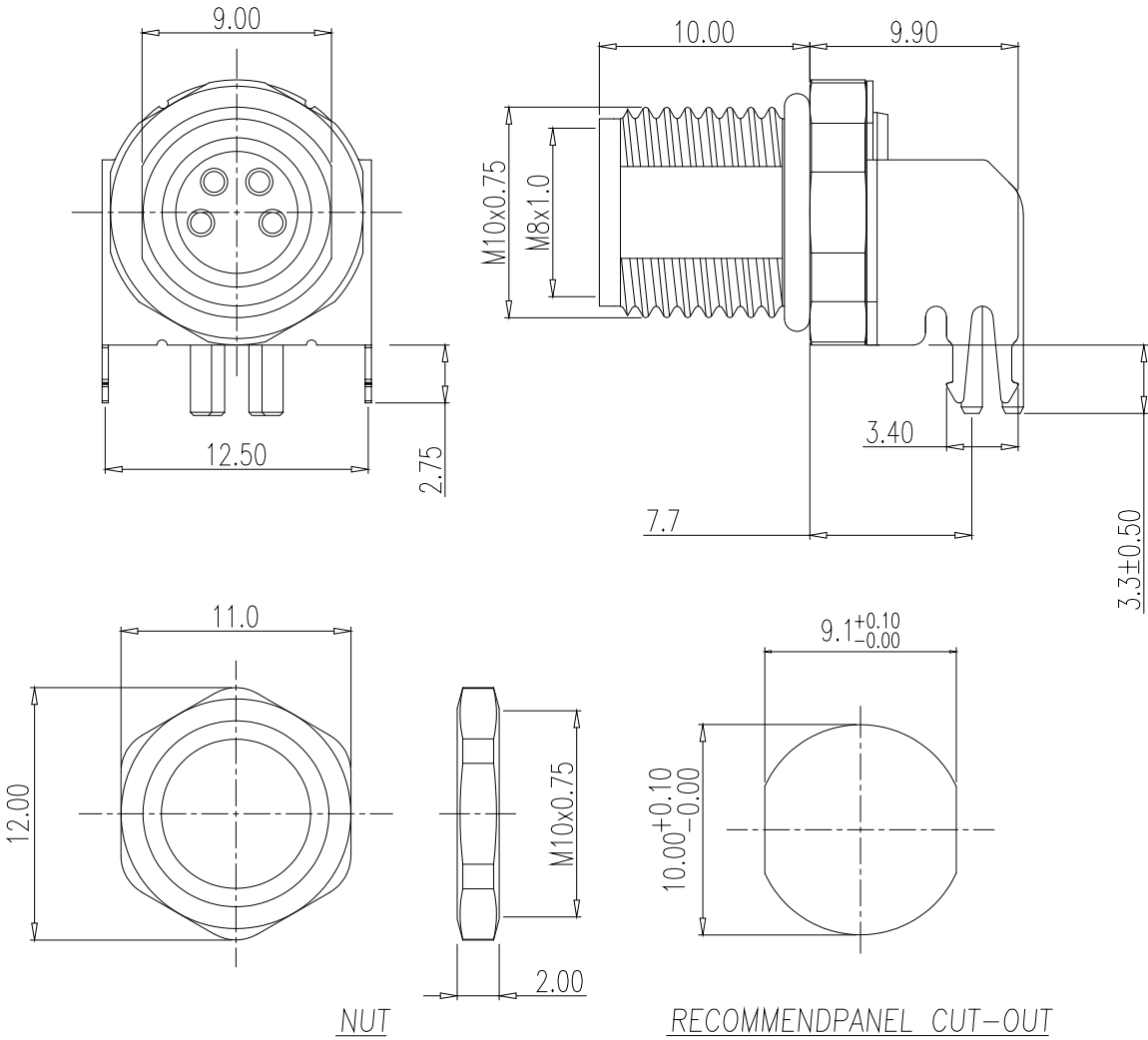
HOUSING:	PA66, UL94 V-0, BLACK
CONTACTS:	10u" GOLD PLATED BRASS
NUT:	NICKEL PLATED BRASS
SHELL:	NICKEL PLATED BRASS
ORING:	NBR
GROUND:	TIN PLATED BRONZE

ELECTRICAL:

RATED CURRENT:	1.5A
RATED VOLTAGE:	30V
INSULATION RESISTANCE:	100 MOhms MIN.
CONTACT RESISTANCE:	10 mOhms MAX.

ENVIRONMENT:

OPERATING TEMPERATURE:	-40°C TO +85°C
WATER PROOF:	IP67



857-YYY-213R004

003 = 3 POSITION
004 = 4 POSITION

RoHS COMPLIANT



THESE DRAWINGS AND SPECIFICATIONS ARE THE PROPERTY OF NorComp AND SHALL NOT BE REPRODUCED, COPIED OR USED AS THE BASIS FOR THE MANUFACTURE OR SALE OF APPARATUS WITHOUT WRITTEN PERMISSION.

DRAWN:
J. KADEL

DATE:
06/21/2021

UNITS = mm

DO NOT SCALE FROM DRAWING

NorComp

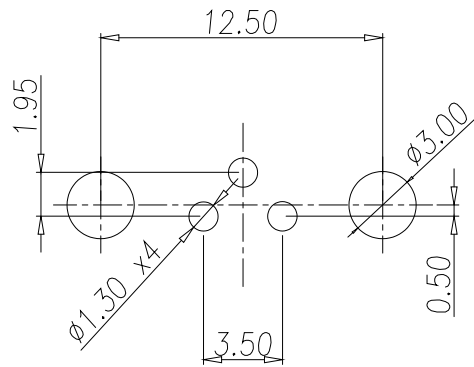
SCALE:
NTS

SHEET OF
1 2

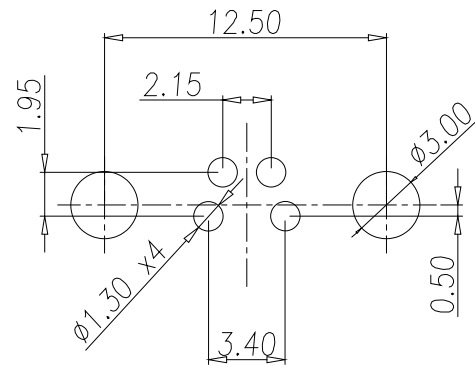
REV
5

DWG NO.

857-YYY-213R004



3P P.C.B LAYOUT



4P P.C.B LAYOUT

RoHS COMPLIANT



THESE DRAWINGS AND SPECIFICATIONS ARE THE PROPERTY OF NorComp AND SHALL NOT BE REPRODUCED, COPIED OR USED AS THE BASIS FOR THE MANUFACTURE OR SALE OF APPARATUS WITHOUT WRITTEN PERMISSION.

DRAWN:
J. KADEL
DATE:
06/21/2021

UNITS = mm

DO NOT SCALE FROM DRAWING

NorComp

SCALE: NTS
SHEET 2 OF 2
REV 5
DWG NO. 857-YYY-213R004