

DESCRIPTION: MACHINED MICRO-D // VERTICAL SOLDER // FEMALE

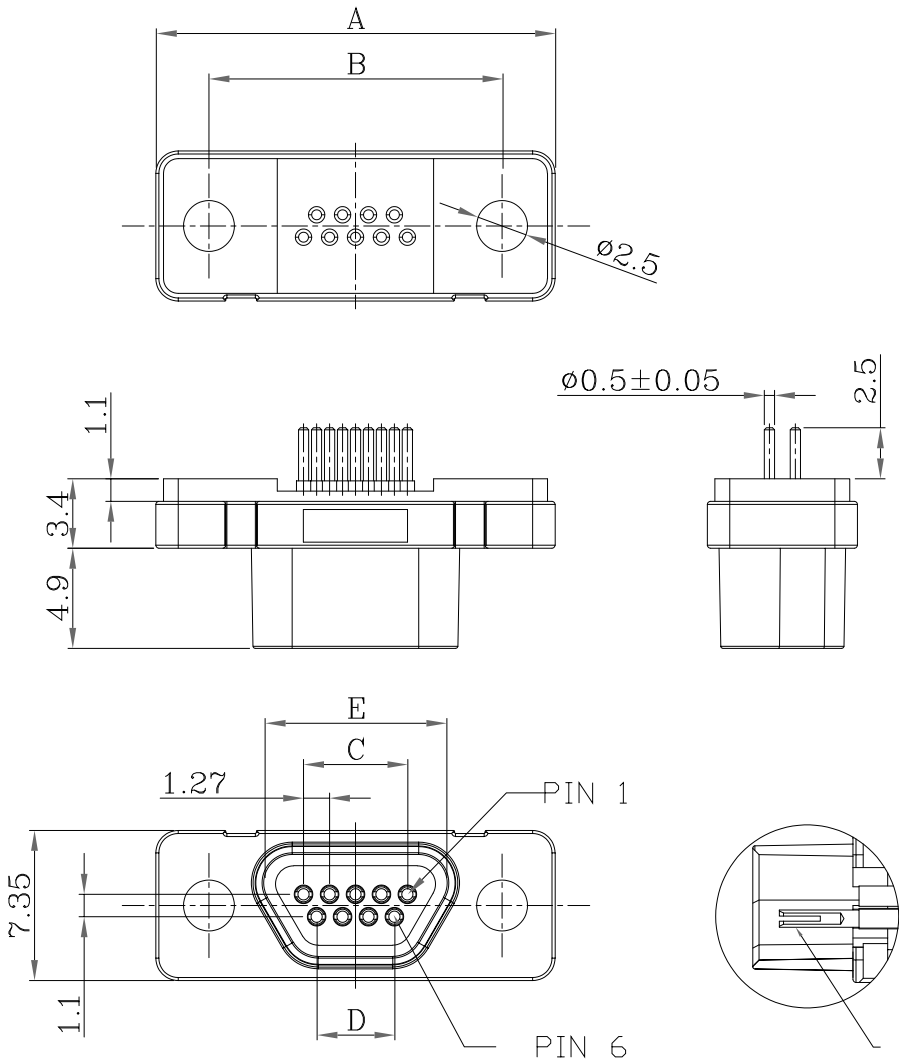
SPECIFICATIONS:

MATERIALS:
INSULATOR: LCP, UL94 V-0, BLACK
CONTACTS: 15µ" GOLD PLATED BRASS
SHELL: NICKEL PLATED ZINC ALLOY 60µ"-100µ"

ELECTRICAL:
RATED CURRENT: 2A
RATED VOLTAGE: 60VDC
D.W.V.: 630 VAC for 1 min.
INSULATION RESISTANCE: 1000 MOhms MIN.
CONTACT RESISTANCE: 30 mOhms MAX.

ENVIRONMENT:
OPERATING TEMPERATURE: -40°C TO +125°C
PROCESS TEMPERATURE: 260°C

*NOT DESIGNED TO MATE WITH NORCOMP 380 // 381 // 960 SERIES & NORCOMP MICRO-D CABLE ASSEMBLIES USING THE 960 SERIES CONNECTORS.
**DESIGNED TO MATE WITHIN NORCOMP 58Y-M SERIES MICRO-D CONNECTORS



USE ABOVE FRONT FACE DIMENSIONS FOR PCB LAYOUT DESIGN. 0.7mm HOLE SIZE IS RECOMMENDED; PLEASE ENSURE TO TEST WITHIN YOUR SOLDERING PROCESS TO ENSURE THIS IS SUITABLE.

DIMENSIONS(mm)					
SIZE	A	B	C	D	E
9	19.55	14.35	5.08	3.81	8.70
15	23.36	18.20	8.89	7.62	12.40
25	29.70	24.55	15.24	13.97	19.00

580-MYY-213L001

SERIES 580 = MACHINED MICRO-D
MACHINED
POSITIONS 09
15
25
GENDER 2 = FEMALE - "TULIP" CONTACTS
VERTICAL SOLDER TERMINATION
CONTACT PLATING OPTIONS
1 = 15u" GOLD PLATING
2 = 30u" GOLD PLATING

RoHS COMPLIANT



THESE DRAWINGS AND SPECIFICATIONS ARE THE PROPERTY OF NorComp AND SHALL NOT BE REPRODUCED, COPIED OR USED AS THE BASIS FOR THE MANUFACTURE OR SALE OF APPARATUS WITHOUT WRITTEN PERMISSION.

DRAWN: J. KADEL
DATE: 05/14/2020

TOLERANCES
.x ±0.20
.xx ±0.10
.xxx ±0.05
.xxxx ±0.03
ANGULAR ±1°

UNITS = mm

DO NOT SCALE FROM DRAWING

NorComp

SCALE: NTS
SHEET 1 OF 1
REV 11
DWG NO. 580-MYY-213L001