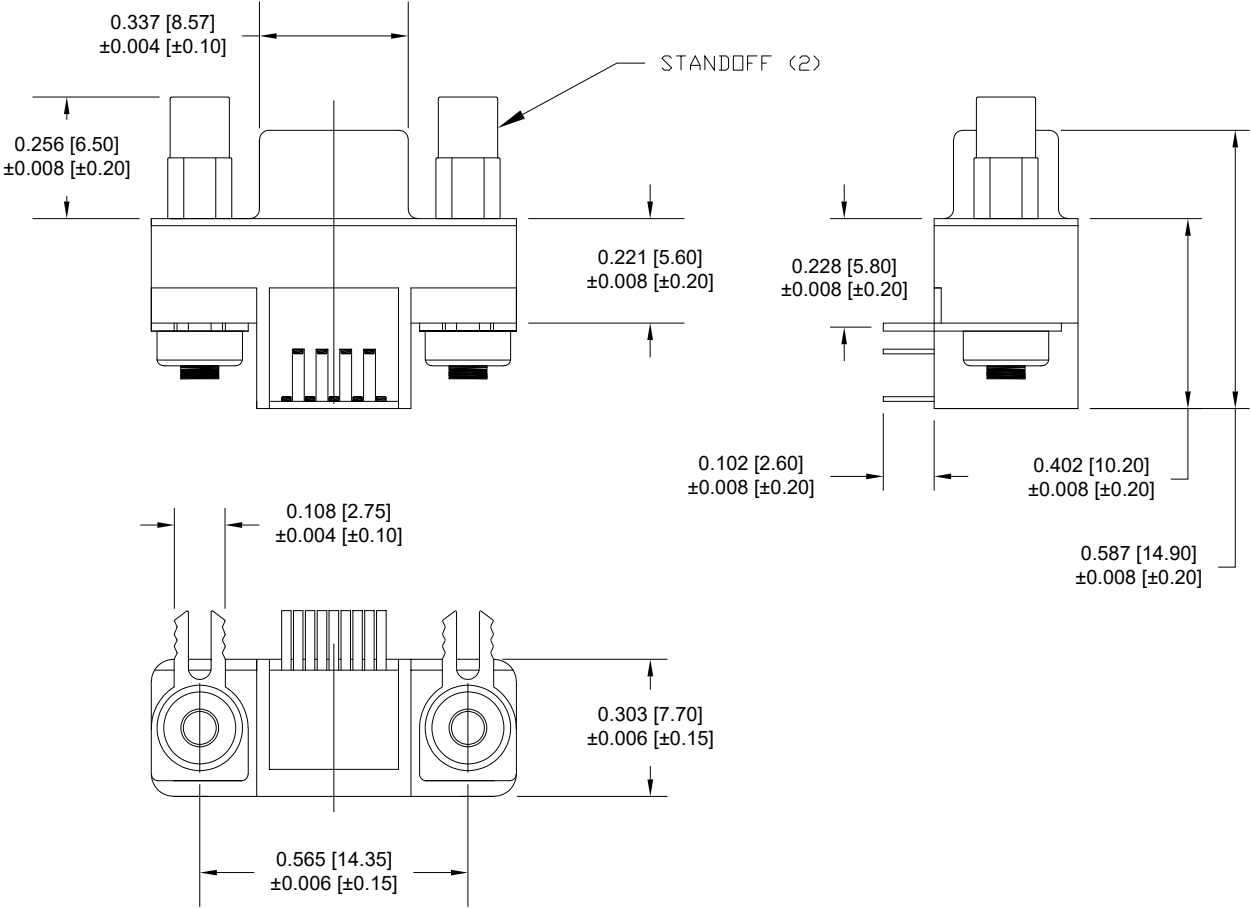
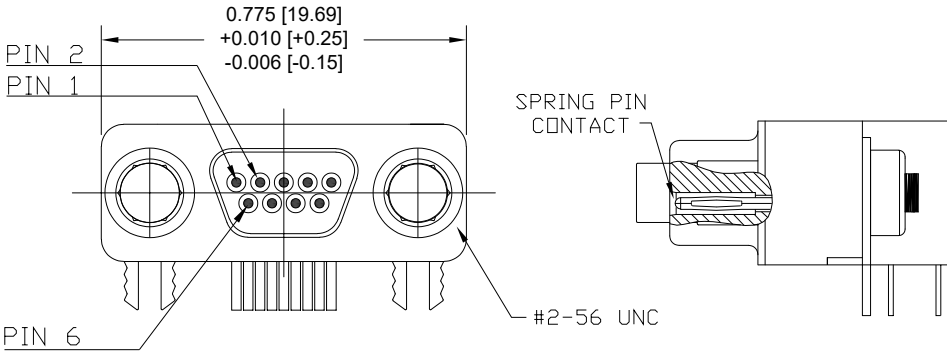


DESCRIPTION: MICRO D-SUB CONNECTOR - MALE - RIGHT ANGLE



SPECIFICATIONS:

MATERIALS:
INSULATOR: PBT, UL94 V-0
PROCESS TEMP: 230°C
CONTACTS: 15µ" GOLD PLATED BRASS
TIN PLATED SOLDER TAILS
NICKEL UNDERPLATE
TIN PLATED STEEL

ELECTRICAL:
RATED CURRENT: 1A
D.W.V.: 500 VAC 1 MIN
INSULATION RESISTANCE: 100 MOhms MIN.
CONTACT RESISTANCE: 45 mOhms MAX.

ENVIRONMENT:
OPERATING TEMPERATURE: -55°C TO +85°C
MAX TORQUE STANDOFFS: 2.5in-lbs

381-009-112L5Y5

SERIES
POSITIONS
GENDER
1 = MALE
TERMINATION
1 = DIP SOLDER
SHELL PLATING
2 = TIN

HARDWARE OPTIONS
1 = BOARDLOCKS ONLY
6 = STANDOFFS & BOARDLOCKS

PLATING OPTIONS
5 = 15u" GOLD PLATING

NOTE:

*NOT DESIGNED TO MATE WITH NORCOMP 580-M // 581-M SERIES CONNECTORS. IF ANY QUESTIONS PLEASE CONTACT ENG@NORCOMP.NET

**IF MATING TO NORCOMP 380 SERIES FEMALE MICRO D, STANDOFFS ON THIS CONNECTOR MUST BE REMOVED TO ALLOW FULLY FASTENED MATING

RoHS COMPLIANT



THESE DRAWINGS AND SPECIFICATIONS ARE THE PROPERTY OF NorComp AND SHALL NOT BE REPRODUCED, COPIED OR USED AS THE BASIS FOR THE MANUFACTURE OR SALE OF APPARATUS WITHOUT WRITTEN PERMISSION.

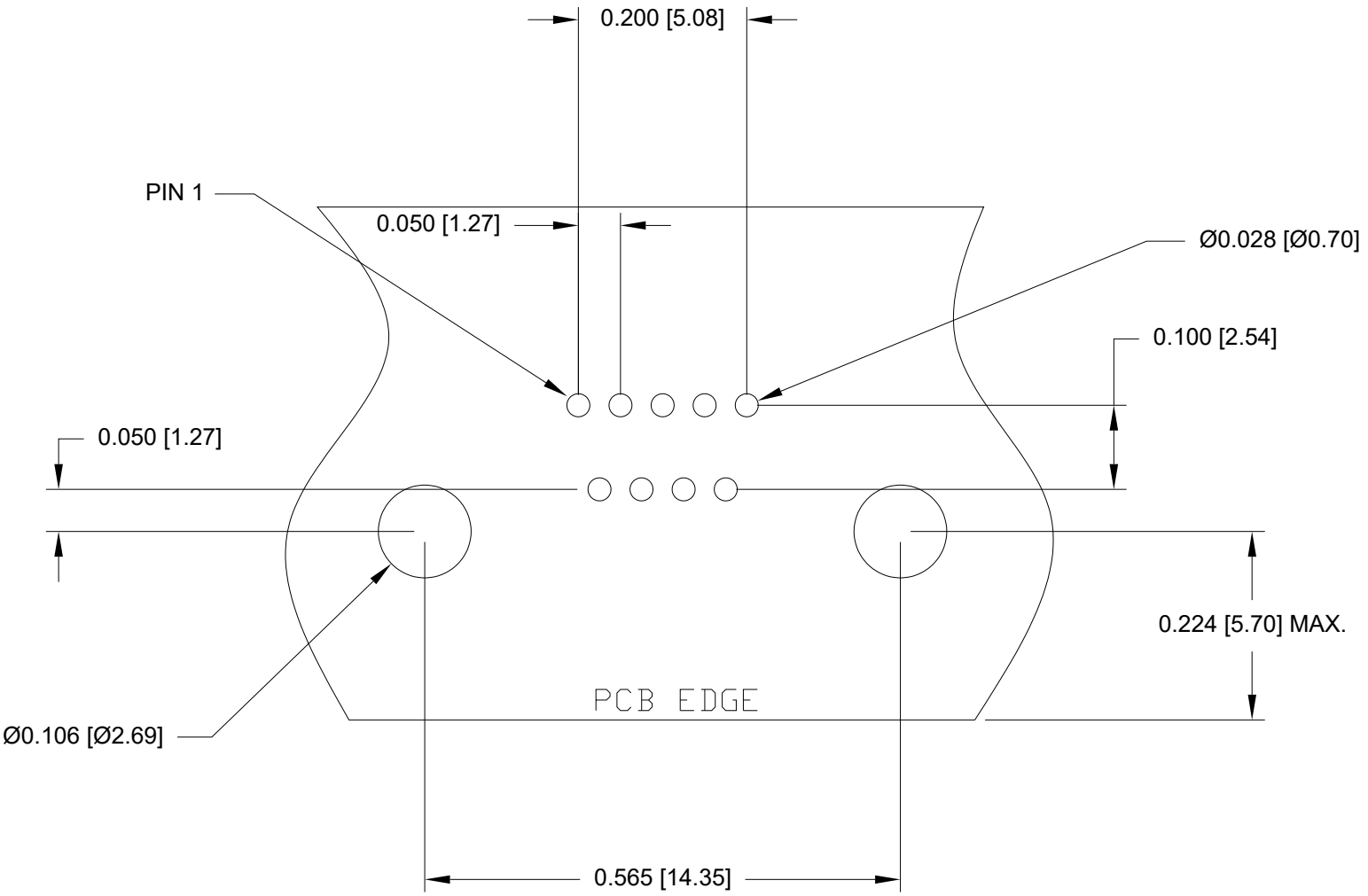
DRAWN: M. SIGMON
DATE: 08/18/2011

UNITS = inch [mm]

DO NOT SCALE FROM DRAWING

NorComp

SCALE: NTS
SHEET 1 OF 2
REV 8
DWG NO. 381-009-112L565



RECOMMENDED RECOMMENDED PCB LAYOUT (Top View)
(9 POSITION ONLY) TOLERANCE ±0.002 [±0.05]

RoHS COMPLIANT



THESE DRAWINGS AND SPECIFICATIONS ARE THE PROPERTY OF NorComp AND SHALL NOT BE REPRODUCED, COPIED OR USED AS THE BASIS FOR THE MANUFACTURE OR SALE OF APPARATUS WITHOUT WRITTEN PERMISSION.

DRAWN: M. SIGMON

DATE: 08/18/2011

UNITS = inch [mm]

DO NOT SCALE FROM DRAWING

NorComp

SCALE: NTS	SHEET 2 OF 2	REV 8
DWG NO.	381-009-112L565	