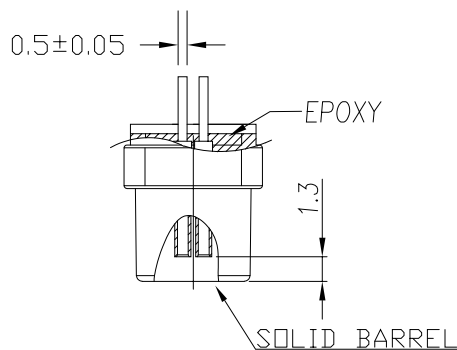
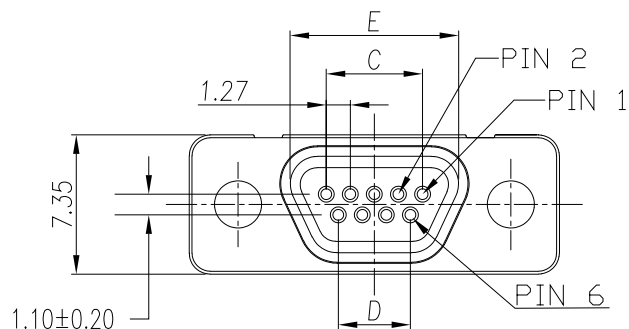
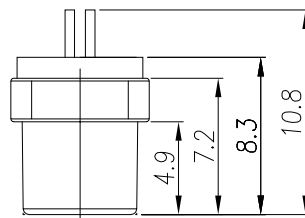
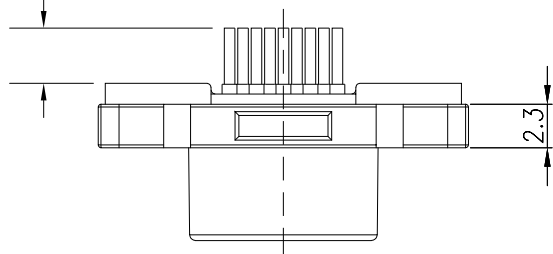


PCB CONTACT LENGTH
SEE PART NUMBER KEY
±0.20mm



NOTE:

**NOT DESIGNED TO MATE WITH NORCOMP 580-M // 581-M SERIES CONNECTORS.
IF ANY QUESTIONS PLEASE CONTACT ENG@NORCOMP.NET

SPECIFICATIONS:

ELECTRICAL:

INSULATOR RESISTANCE: 1000 MOHMS MIN.
SIGNAL CONTACT RESISTANCE: 45 mOHMS MAX.
CONTACT CURRENT RATING: 1 AMP
D.W.V.: 500VAC
OPERATING TEMPERATURE: -55°C TO 85°C

MATERIALS:

INSULATOR: PBT UL94V-0, BLK
SHELL: ZINC ALLOY
CONTACTS: 15u" GOLD PLATED BRASS

DIMENSIONS(mm) ±0.15

| SIZE | A | B | C | D | E |
|------|-------|-------|-------|-------|-------|
| 9 | 19.55 | 14.35 | 5.08 | 3.81 | 8.70 |
| 15 | 23.36 | 18.20 | 8.89 | 7.62 | 12.40 |
| 25 | 29.70 | 24.55 | 15.24 | 13.97 | 19.00 |

380-YYY-21YL001

SERIES
POSITIONS

009

015

025

PCB CONTACT LENGTH

3 = 2.50mm

A = 4.44mm

RoHS COMPLIANT



THESE DRAWINGS AND SPECIFICATIONS ARE THE PROPERTY OF NorComp AND SHALL NOT BE REPRODUCED, COPIED OR USED AS THE BASIS FOR THE MANUFACTURE OR SALE OF APPARATUS WITHOUT WRITTEN PERMISSION.

DRAWN:
M. SIGMON

DATE:
08/19/2011

UNITS = mm

DO NOT SCALE FROM DRAWING

NorComp

SCALE:
NTS

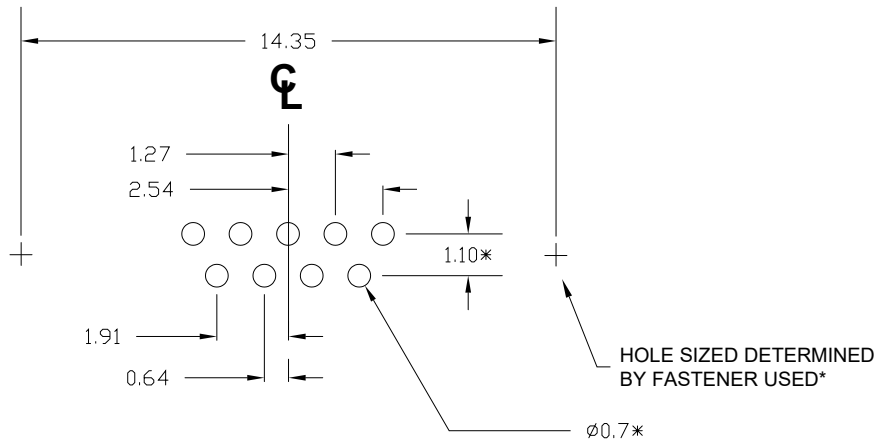
SHEET OF
1 2

REV
14

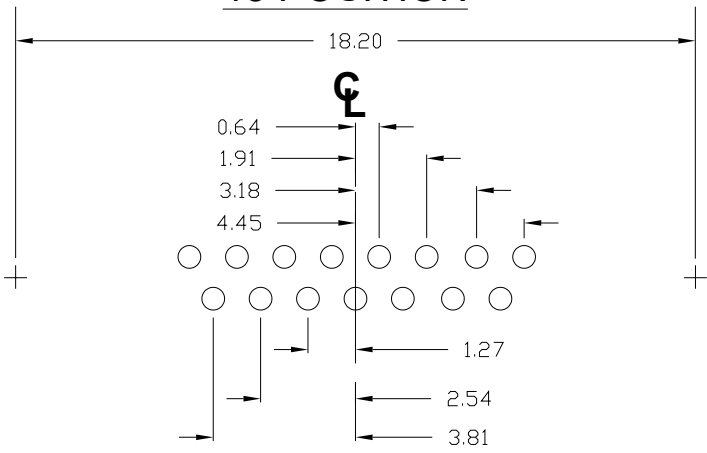
DWG NO.

380-YYY-213L001

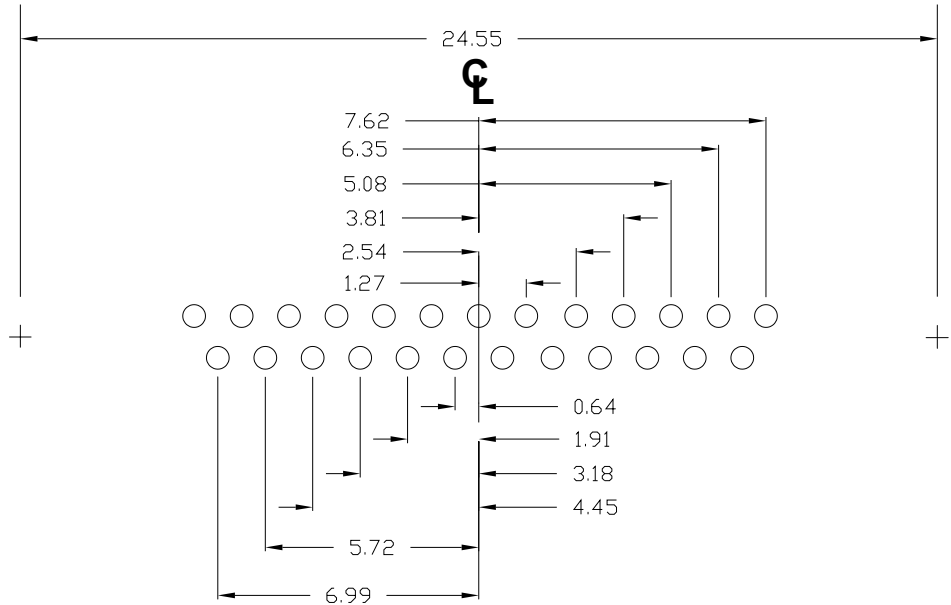
9 POSITION



15 POSITION



25 POSITION



*TYPICAL
PLEASE TEST WITHIN
YOUR SOLDERING
OPERATION TO ENSRUE
THIS IS SUITABLE

RoHS COMPLIANT



THESE DRAWINGS AND SPECIFICATIONS ARE THE PROPERTY OF NorComp AND SHALL NOT BE REPRODUCED, COPIED OR USED AS THE BASIS FOR THE MANUFACTURE OR SALE OF APPARATUS WITHOUT WRITTEN PERMISSION.

DRAWN: M. SIGMON

DATE: 08/19/2011

UNITS = mm

DO NOT SCALE FROM DRAWING

NorComp

SCALE: NTS

SHEET 2 OF 2

REV 14

DWG NO. 380-YYY-213L001