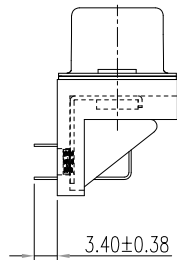
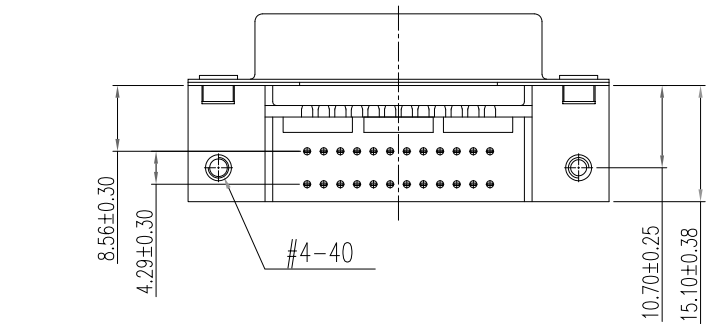
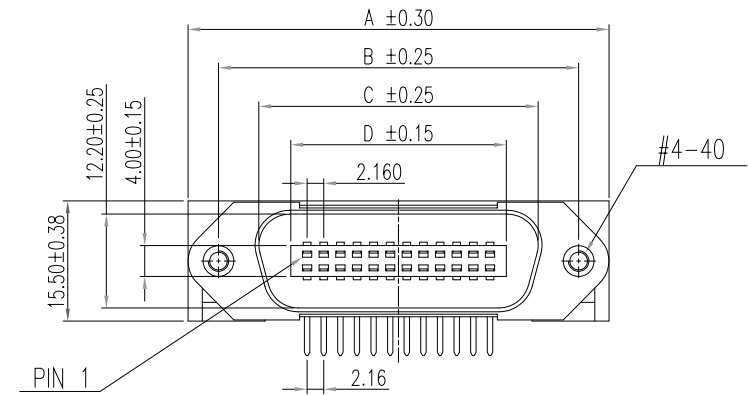


DIMENSIONS OF ALL SIZES AVAILABLE

SIZE	A	B	C	D
14 POS.	44.00	36.00	25.50	17.20
24 POS.	54.85	46.65	36.20	27.80
36 POS.	67.98	59.70	49.00	41.00
50 POS.	83.10	74.70	64.50	56.30



ELECTRICAL CHARACTERISTICS

VOLTAGE: 250 VAC (RMS) Max.
CURRENT RATING: 1 AMP PER CONTACT
CONTACT RESISTANCE: 30 mΩ Max.
INSULATION RESISTANCE: 1000 MΩ Min.
DIELECTRIC WITHSTANDING: 1000 VAC (RMS)
TOTAL MATING FORCE: 25 LBS Max.
TOTAL UNMATING FORCE: 2 LBS Min.
OPERATING TEMPERATURE: -55°C TO +105°C

MATERIAL CHARACTERISTICS

INSULATOR: PA9T, UL94V-0, BLUE
CONTACTS: COPPER ALLOY
CONTACT PLATING: GOLD FLASH MATING ARE
MATTE TIN ON PCB CONTACTS
CONTACT INSERTION FORCE: 25 LBS MAX.
CONTACT SEPARATION FORCE: 2 LBS. MIN.

112-YYY-113RYY1

SERIES _____
POSITIONS _____
014
024
036
050
GENDER _____
1 = MALE
TERMINATION _____
1 = DIP SOLDER
SHELL PLATING _____
3 = NICKEL
RoHS COMPLIANT (HIGH TEMP. PROCESS) _____
HARDWARE OPTIONS _____
00 = 4-40 THREAD
49 = FORK BOARD LOCK (PCB)
PLATING OPTIONS _____
1 = GOLD FLASH MATING AREA WITH TIN TAILS

RoHS COMPLIANT



THESE DRAWINGS AND SPECIFICATIONS ARE THE PROPERTY OF NorComp AND SHALL NOT BE REPRODUCED, COPIED OR USED AS THE BASIS FOR THE MANUFACTURE OR SALE OF APPARATUS WITHOUT WRITTEN PERMISSION.

DRAWN: J. KADEL
DATE: 12/26/2018

UNITS = MM

DO NOT SCALE FROM DRAWING

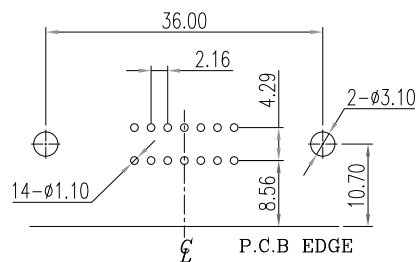
NorComp

SCALE: NTS
DWG NO.

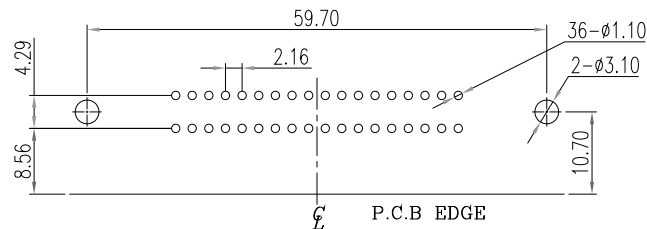
SHEET 1 OF 3

112-YYY-113RYY1

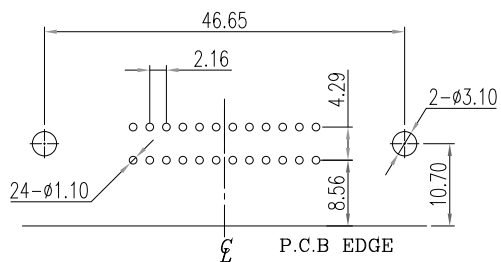
REV 2



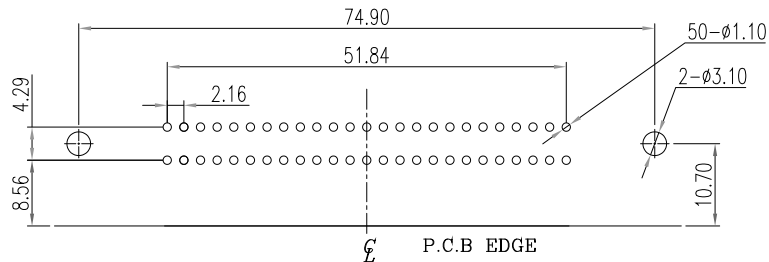
RECOMMENDED P.C.B LAYOUT 14 POS.



RECOMMENDED P.C.B LAYOUT 36 POS.

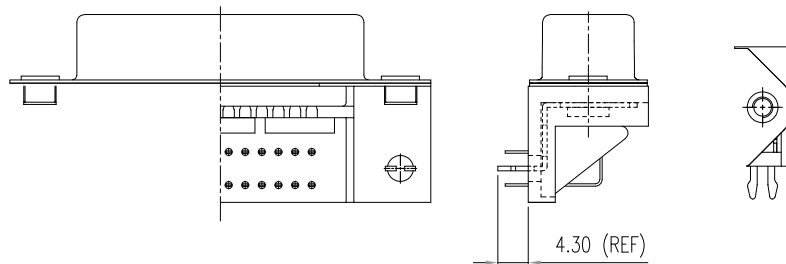


RECOMMENDED P.C.B LAYOUT 26 POS.



RECOMMENDED P.C.B LAYOUT 50 POS.

-49x HARDWARE OPTION



RoHS COMPLIANT



THESE DRAWINGS AND SPECIFICATIONS ARE THE PROPERTY OF NorComp AND SHALL NOT BE REPRODUCED, COPIED OR USED AS THE BASIS FOR THE MANUFACTURE OR SALE OF APPARATUS WITHOUT WRITTEN PERMISSION.

DRAWN:

J. KADEL

DATE:

12/26/2018

UNITS = MM

DO NOT SCALE FROM DRAWING

NorComp

SCALE:

NTS

SHEET

OF

2

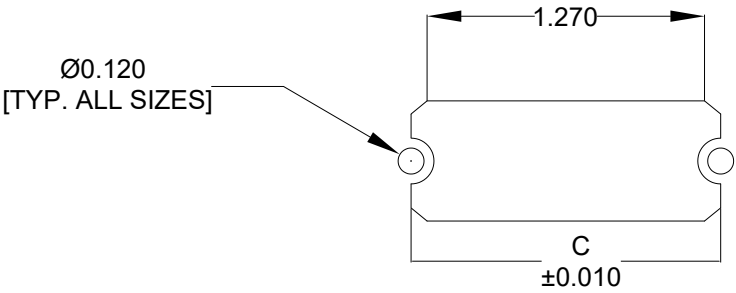
3

REV

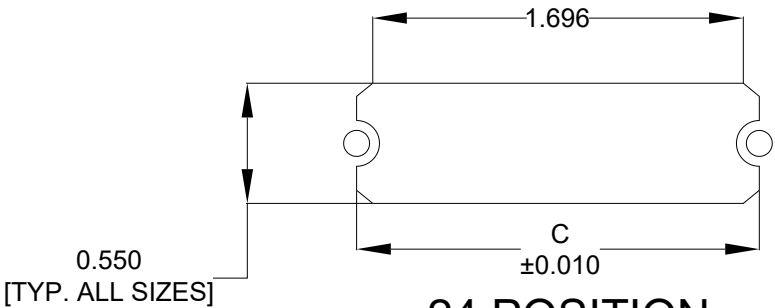
2

DWG NO.

112-YYY-113RYY1



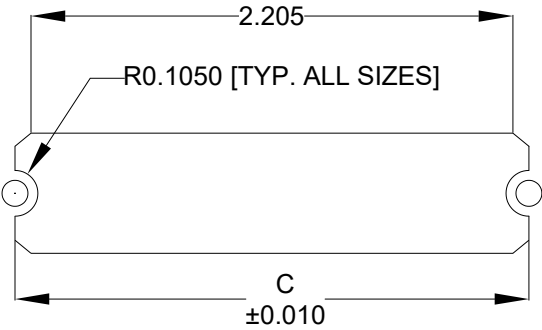
14 POSITION



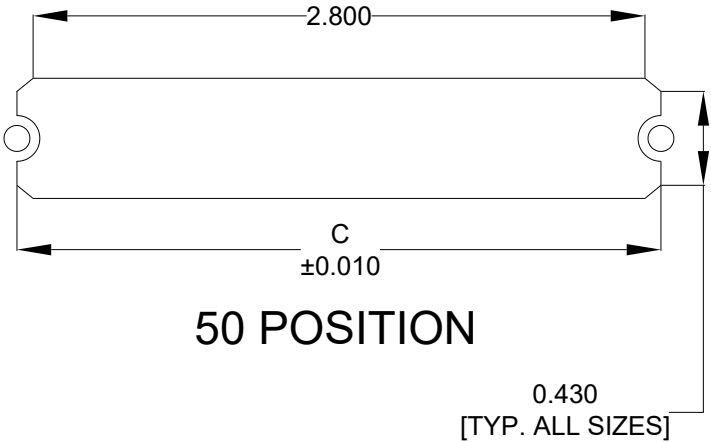
24 POSITION

NOTE DIMENSION "C" =
CENTER TO CENTER OF MOUNTING HOLES
CENTER OF RADI
OVERALL LENGTH OF CUTOUT

	014	024	036	050
C	1.417	1.843	2.352	2.947
	36.00	46.80	59.74	74.85



36 POSITION



50 POSITION

RoHS COMPLIANT



THESE DRAWINGS AND SPECIFICATIONS ARE THE PROPERTY OF NorComp AND SHALL NOT BE REPRODUCED, COPIED OR USED AS THE BASIS FOR THE MANUFACTURE OR SALE OF APPARATUS WITHOUT WRITTEN PERMISSION.

DRAWN:
J. KADEL

DATE:
12/26/2018

UNITS = INCHES [MM] DO NOT SCALE FROM DRAWING

NorComp

SCALE:
NTS

SHEET 3 OF 3

REV 2

DWG NO. 112-YYY-113RYY1