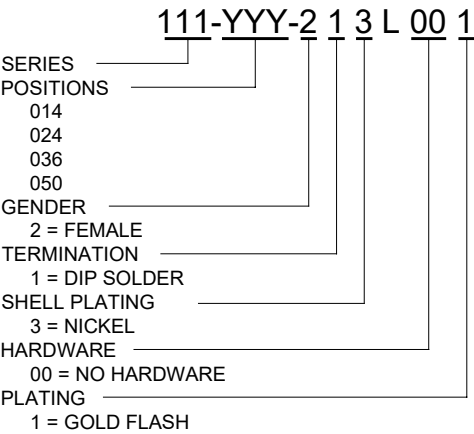
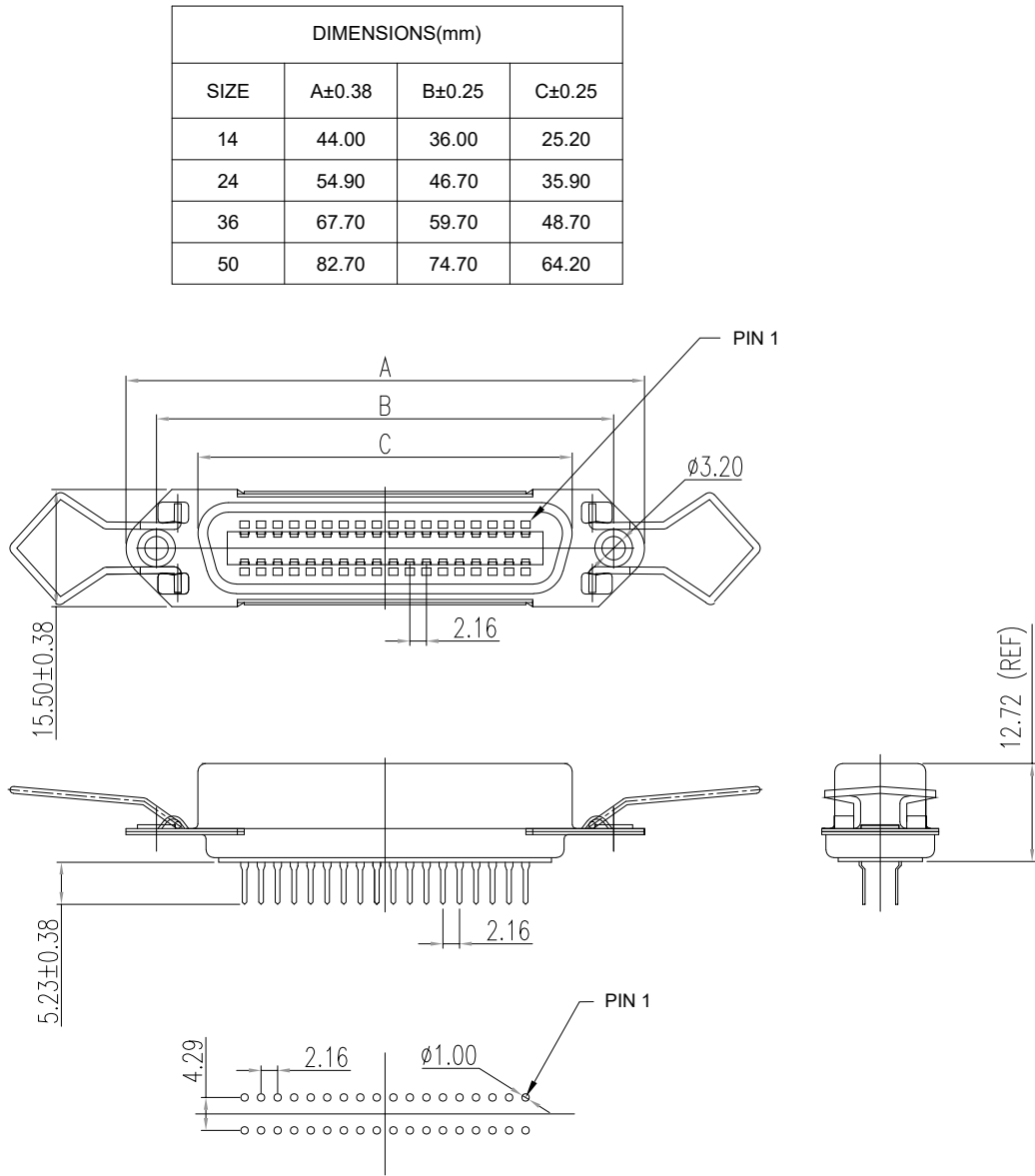


SPECIFICATIONS:

<b>ELECTRICAL:</b>	
CURRENT RATING:	1 AMPS
INSULATION RESISTANCE:	1,000 MΩ MIN. @ 500 VDC
DIELECTRIC WITHSTANDING VOLTAGE:	1,000 VAC FOR 1 MINUTE
CONTACT RESISTANCE:	30 mΩ MAX.
OPERATING TEMPERATURE:	-55°C TO +105°C
<b>MATERIALS:</b>	
INSULATION:	PBT, UL94 V-0 RATED
CONTACTS:	PHOSPHOR BRONZE
CONTACT PLATING:	GOLD FLASH IN MATING AREA
	BRIGHT TIN IN SOLDER AREA
SHELL:	STEEL, NICKEL PLATED



RECOMMENDED P.C.B LAYOUT  
36P SHOWN

RoHS COMPLIANT



THESE DRAWINGS AND SPECIFICATIONS ARE THE PROPERTY OF NorComp AND SHALL NOT BE REPRODUCED, COPIED OR USED AS THE BASIS FOR THE MANUFACTURE OR SALE OF APPARATUS WITHOUT WRITTEN PERMISSION.

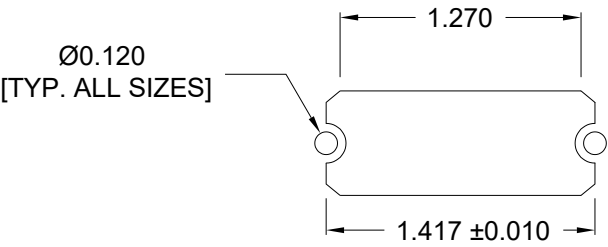
DRAWN: WAYNE ROBBINS

DATE: 09/15/2005

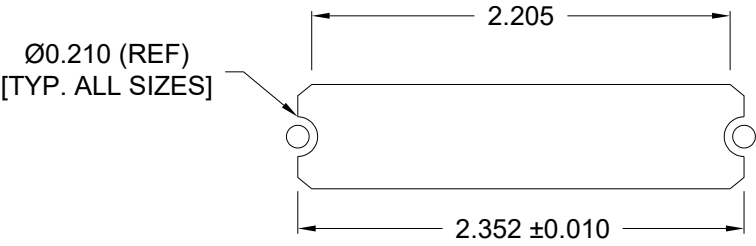
UNITS = mm

DO NOT SCALE FROM DRAWING

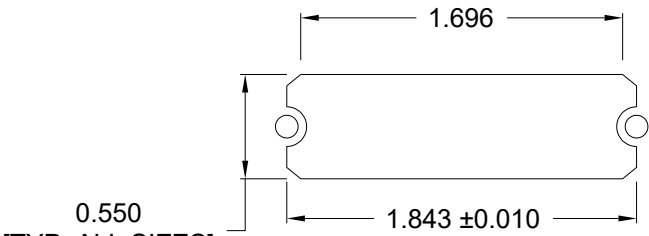
SCALE: NTS	SHEET 1 OF 2	REV 12
DWG NO. 111-YYY-213L001		



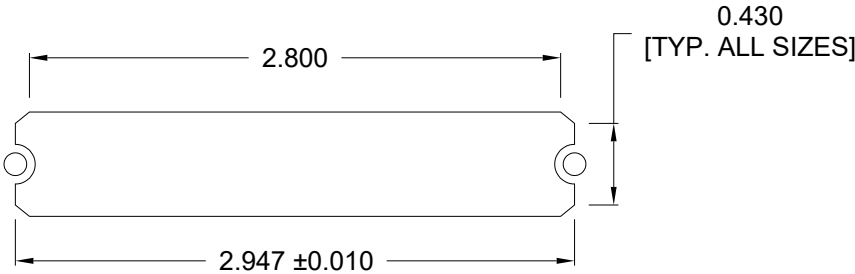
14 POSITION



36 POSITION



24 POSITION



50 POSITION

RoHS COMPLIANT



THESE DRAWINGS AND SPECIFICATIONS ARE THE PROPERTY OF NorComp AND SHALL NOT BE REPRODUCED, COPIED OR USED AS THE BASIS FOR THE MANUFACTURE OR SALE OF APPARATUS WITHOUT WRITTEN PERMISSION.	DRAWN: WAYNE ROBBINS
	DATE: 09/15/2005

UNITS = inches

DO NOT SCALE FROM DRAWING

NorComp	SCALE: NTS	SHEET 2 OF 2	REV 12
	DWG NO. 111-YYY-213L001		