

Ø17.50  
[.69 in]

Ø12.00  
[.47 in]

▲ WINDOW TO VIEW  
Bi-Color LED:  
RED/GREEN



▲ ACTUATOR:  
COLOR BLACK

▲ HOUSING:  
BLACK

THREAD:  
M12 x 0.75

7.2  
[.28 in]

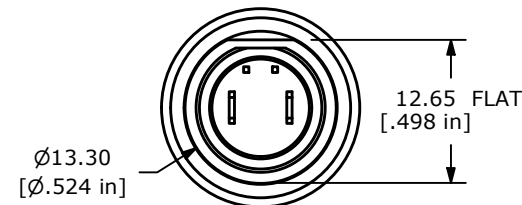
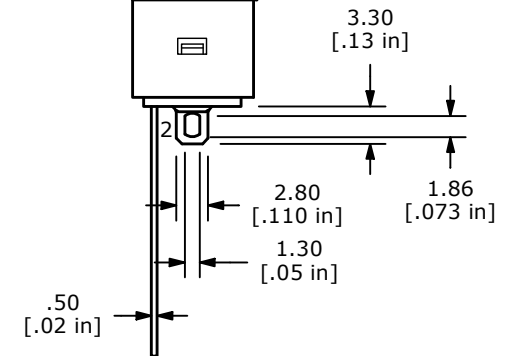
16.80  
[.66 in]

22.0  
[.87 in]

21.0  
[.83 in]

5.08  
[.20 in]

▲ CATHODE (-)



LED	FORWARD CURRENT	FORWARD VOLTAGE @ 20mA	LUMINOUS INTENSITY
UNITS	mA	V	mcd
RED	20	2.0 - 2.5	700
GREEN	20	2.2 - 2.7	130

## NOTE:

1. ALL DIMENSIONS IN MM [INCH]
2. GENERAL TOLERANCE: X.X =  $\pm 0.4$   
X.XX =  $\pm 0.25$
3. TERMINAL NUMBERS FOR REF ONLY
- ▲ 4. CIRCUIT: SPST OFF-ON (LATCHING)
5. CONTACT MATERIAL: Gold over SILVER
6. RATING: 100mA @ 24 VDC
7. ELECTRIC LIFE: 200,000 CYCLES AT FULL LOAD
8. CONTACT RESISTANCE: 50 mΩ max. (INITIAL)
9. INSULATION RESISTANCE: 1,000 MΩ min. @ 500VDC.
10. DIELECTRIC STRENGTH: 1,000 VAC rms.
11. OPERATING FORCE: 350 gf  $\pm 150$  gf
12. OPERATING TEMPERATURE: -30°C to +85°C.
13. CONTACT BOUNCE: 10ms MAX.
14. TRAVEL: 2.5mm  $\pm 0.25$ mm
15. PANEL THICKNESS RANGE: 1.5 - 4.0 mm.
16. ▲ DENOTES CRITICAL PARAMETER.
17. MAX MOUNTING TORQUE: 0.5 Nm APPLIED TO THE NUT
- ▲ 18. HARDWARE INCLUDED:
  1. T081101 LOCK WASHER (Qty 1)
  2. T081102 HEX NUT (Qty 1)
  3. T081103 O-RING (Qty 1)
19. SEAL RATING: IP67 AT THE FRONT PANEL

REV	ECO NO	DESCRIPTION	DATE	BY	E-SWITCH®				OBJECT ID
B	ECO-102841	NOTE 17 0.5 NM WAS 1.5	07/12/24	JS	TITLE RP8200B2M1CEBLKBLKRG				000022799
					SCALE	DATE	DR	DWG	REV
					3:2	8/21/2017	MW	ST082011	B

THE INFORMATION CONTAINED IN THIS DOCUMENT IS PROPRIETARY TO  
E-SWITCH AND IS NOT TO BE COPIED OR TRANSFERRED