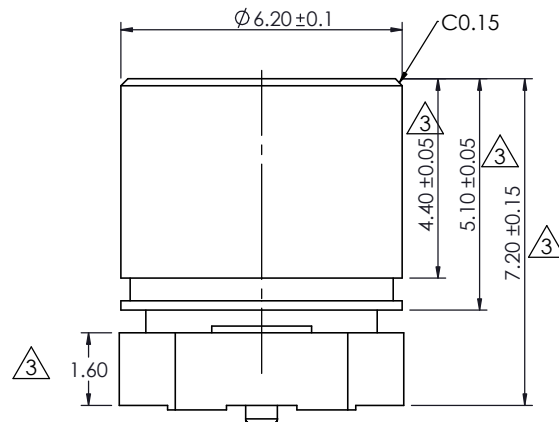
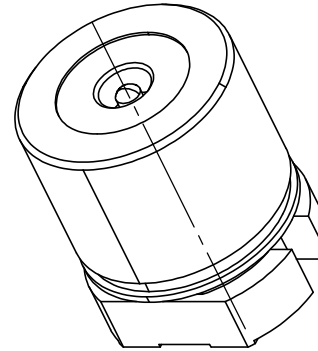
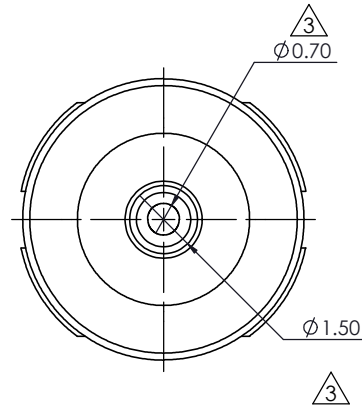


TOLERANCE UNLESS OTHERWISE SPECIFIED	
.X	±0.15
.XX	±0.15

THIS IS A C.A.D. GENERATED DRAWING
DO NOT MAKE MANUAL REVISIONS TO MASTER.



ISSUE NUMBER	
ORIGINAL	①
ADD NOTE 6 & 7	
P.M. AUG. 9/2023	②
DIMENSIONS UPDATED	
V.K. AUG. 08/2025	③



SPECIFICATION:

1- MATERIAL:

CONTACT: BRASS, GOLD FLASH PLATING ALL OVER NICKEL UNDERPLATING
SPRING: SUS
MAGNET : N52
PCB: FR4

2- ELECTRICAL:

VOLTAGE RATING (PER CONTACT): 5V
CURRENT RATING (PER CONTACT): 1.5A

3- WORKING STROKE & FORCE: STROKE 0.8mm (PER CONTACT): 60gf MAX.

4- MECHANICAL LIFE: 10,000 CYCLE MIN.

5- WORKING TEMPERATURE RANGE: -30°C~+85°C.

6- RECOMMENDED SOLDERING PROCESS ARE SELECTIVE SOLDERING OR MANUAL SOLDERING. OTHER FORMS OF SOLDERING SUCH AS WAVE SOLDER OR REFLOW SOLDER ARE NOT RECOMMENDED AND CAN POTENTIALLY CAUSE DEMAGNETIZATION OF MAGNET IN THE CONNECTOR

7- MATING WITH: 686B0222030B1E




THIS SERIES FULLY CONFORMS TO
THE EUROPEAN UNION DIRECTIVES
2011/65/EU FOR RoHS COMPLIANCY.



YOUR CONNECTION TO QUALITY & SERVICE

EDAC INC
TORONTO, ONTARIO
CANADA

THESE DRAWINGS AND SPECIFICATIONS
ARE THE PROPERTY OF EDAC INC., AND
SHALL NOT BE REPRODUCED, OR COPIED
OR USED AS THE BASIS FOR THE
MANUFACTURE OR SALE OF APPARATUS
WITHOUT WRITTEN PERMISSION.

MAGNETIC SPRING LOADED CONNECTOR, 2 POS, FEMALE		ACAD REFERENCE NO.: 686B02C2P001B0E		UNIT: MM	
		DRAWN: J.L.		DATE: 3/13/2023	
		CHECKED: R.S.M		DATE: 8/8/2025	
 <div>EDAC INC TORONTO, ONTARIO CANADA YOUR CONNECTION TO QUALITY & SERVICE</div>	THESE DRAWINGS AND SPECIFICATIONS ARE THE PROPERTY OF EDAC INC., AND SHALL NOT BE REPRODUCED, OR COPIED OR USED AS THE BASIS FOR THE MANUFACTURE OR SALE OF APPARATUS WITHOUT WRITTEN PERMISSION.	SCALE: 6:1		SHEET 1 OF 1	
		DRAWING NUMBER: 686B02C2P001B0E			ISSUE
		PART NUMBER: 686B02C2P001B0E			3