

VSC8211
User Guide
VSC8211 Evaluation Board
December 2013



Contents

| | | |
|----------|--|-----------|
| 1 | Revision History | 1 |
| 1.1 | Revision 1.0 | 1 |
| 2 | Introduction | 2 |
| 3 | General Description | 3 |
| 3.1 | Hardware Features | 3 |
| 3.1.1 | Power Connections | 3 |
| 3.1.2 | Copper Port RJ45 Connections | 3 |
| 3.1.3 | SGMII MAC Interface via SMA | 3 |
| 3.1.4 | GMII, RGMII, MII, TBI and RTBI MAC Interface | 3 |
| 3.1.5 | Fiber Transceiver Interface (SFP Cage) | 3 |
| 3.1.6 | Switches | 3 |
| 3.1.7 | Taitien 25 MHz Crystal | 3 |
| 3.1.8 | External REFCLK Option | 4 |
| 3.1.9 | Silabs Microcontroller | 4 |
| 3.1.10 | EEPROM Option | 4 |
| 3.1.11 | CMODE Pins (Pin-Strap mode) | 4 |
| 3.1.12 | LED Interface | 4 |
| 3.1.13 | CLOCKOUT SMA | 4 |
| 3.2 | Software Requirements | 5 |
| 4 | Quick Start | 6 |
| 4.1 | Board Configuration | 6 |
| 4.1.1 | Power Up | 6 |
| 4.1.2 | Clock Reset | 6 |
| 4.2 | GUI and Driver Installation | 6 |
| 4.3 | Using the GUI | 7 |
| 4.4 | Test Cases | 8 |
| 4.4.1 | CAT5 to SGMII with Clause 37 AutoNeg Enabled | 8 |
| 4.4.2 | CAT5 to RGMII | 8 |
| 4.5 | Useful Registers | 9 |
| 4.5.1 | Ethernet Packet Generator | 9 |
| 4.5.2 | Far-End Loopback | 9 |
| 4.5.3 | Near-End Loopback | 9 |
| 5 | Additional Information | 10 |

1 Revision History

The revision history describes the changes that were implemented in this document. The changes are listed by revision, starting with the most current publication.

1.1 Revision 1.0

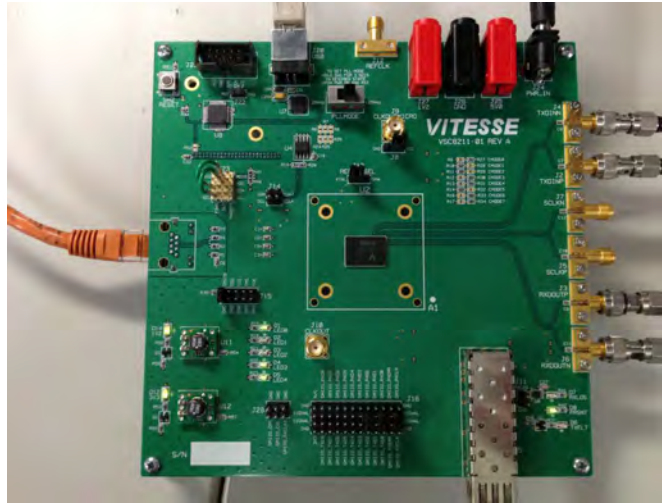
Revision 1.0 was published in December 2013. This was the first publication of the document.

2 Introduction

The VSC8211 device is a low-power, gigabit Ethernet transceiver suited for media converters and Ethernet switches with virtually any serial or parallel MAC interface. The VSC8211 device also includes Vitesse's VeriPHY cable diagnostics feature.

This document describes the operation of the VSC8211 Evaluation Board (VSC8211EV). The [Quick Start](#) section describes how to install and run the graphical user interface (GUI) to fully control the evaluation board.

Figure 1 • VSC8211EV



The following reference documents provide additional information about the operation of the VSC8211 evaluation board.

- VSC8211 Datasheet (<https://www.vitesse.com/products/download.php?fid=118&number=VSC8211>)
- VSC8211 Evaluation Board GUI (<https://www.vitesse.com/products/download.php?fid=5157&number=VSC8211>)
- VSC8211 Evaluation Board Schematics (<https://www.vitesse.com/products/product.php?number=VSC8211>)

3 General Description

The VSC8211EV provides users a way to evaluate the VSC8211 device in multiple configurations. One RJ-45 connector is provided for the copper media interface. The MAC interface is accessible via SMA connectors. An SFP cage is available for serial configurations, and headers are available for the parallel interface.

The VSC8211's internal registers are accessed via the MDIO bus from an external microcontroller driven by an external PC via USB. The accompanying GUI enables the user to read and write the device registers. Alternatively, the VSC8211EV has the capability to configure the VSC8211 through an EEPROM or Rabbit microcontroller (not provided).

The evaluation board has the option to use VSC8211's internal on-chip oscillator by connecting a 25 MHz crystal to XTAL1 and XTAL2 or an external reference clock signal through the REFCLK SMA (J12).

3.1 Hardware Features

3.1.1 Power Connections

For convenience, the evaluation board runs off a single 5 VDC power supply. On board DC-DC convertors create the 3.3 VDC rail for the board and optional 1.2 VDC rail. Power is supplied to the upper right corner of the board. Power can be applied either to the 5.5 × 2.1 mm barrel connector (J24) or the banana receptacles (J25 and J26). J27 is an optional monitor point for the 1.2 V rail. When powered by a bench-top supply, the board may draw up to 3 A maximum, module included.

3.1.2 Copper Port RJ45 Connections

The RJ45 copper media PHY port (J1) uses a generic RJ45 jack with a discrete Pulse H5008 magnetic transformer.

3.1.3 SGMII MAC Interface via SMA

The serial MAC interface is available through SMA connectors (J2, J4, J3, and J6), including the optional SCLK (on J5 and J7).

3.1.4 GMII, RGMII, MII, TBI and RTBI MAC Interface

The parallel MAC interfaces are available through pin headers on J16 and J28.

3.1.5 Fiber Transceiver Interface (SFP Cage)

The Fiber transceiver differential pair used in the SGMII to SerDes PHY operating mode is supported with the standard SFP cage (U5).

3.1.6 Switches

Switch SW1 allows the user to select the mode of the EECLK/PLLMODE pin. In the on position a logic high voltage (pull-up resistor) configures the device for a 125 MHz reference clock while a logic-low voltage (pull-down resistor) selects a 25 MHz reference clock option. This is a momentary ON switch which requires the user to hold it in the on position for 3 seconds during board power up or device reset.

3.1.7 Taitien 25 MHz Crystal

The evaluation board is shipped configured to use the VSC8211's internal on-chip oscillator. The jumper on J13 should be installed in the XTAL (left) position, and the jumper on J8 should be installed in the PLL enable or VCC (right) position.

Note: Review the required action for SW1 mentioned above.

3.1.8 External REFCLK Option

The user may choose to provide an external PHY REFCLK via the SMA connector (J12). The user must configure the device by installing a jumper on J8 in the PLL disable or ground (left) position and installing a jumper on J13 in the SMA (right) position.

3.1.9 Silabs Microcontroller

A Silabs F340 microcontroller is included to facilitate a software interface to the registers on the VSC8211 through a USB port.

To communicate to the EEPROM or to use a Rabbit microcontroller rather than the Silabs F340, install jumpers on J23 and J14 accordingly.

Note: A silk-screen error exists on the PCB for J23 such that the MDIO and MDC signals are swapped with the SDA and SCL signals respectively for the F340 and Rabbit signals. See the figure below for clarity of the default configuration.

Figure 2 • MDIO/MDC Jumpers on J23 to SiLabs F340 pins



3.1.10 EEPROM Option

The user may choose to configure the VSC8211 via an EEPROM load. In order to program the EEPROM properly, pull-up or pull-down resistors must be configured for either R6 – R8 or R24 – R26. Please refer to Section 19 of the datasheet regarding to EEPROM programming requirement.

3.1.11 CMODE Pins (Pin-Strap mode)

On the upper right of the board, there is an option to change the CMODE pin pull-up or pull-down resistors, R9 - R17 and R27-R34. Please refer to Section 18 of the datasheet for the detail on how to program the desired operating condition parameters through the CMODE configuration bits and how to choose the value of each CMODE pull-up or pull-down resistor.

3.1.12 LED Interface

LED1 to LED5 are available on the lower left of the board. Please refer to Section 14 of the datasheet for details regarding how to configure the LEDs.

3.1.13 CLOCKOUT SMA

The user should observe a 125 MHz output clock through this SMA if the internal PHY PLL is operating properly.

3.2 Software Requirements

The VSC8211 GUI can be loaded on to any PC or laptop that complies with the following requirements:

1. The PC must run a recent version of MS-Windows. According to the Microsoft website, the following operating systems can run .NET based applications:

- Windows 2000
- Windows XP
- Windows Vista
- Windows-7

Note: The GUI may be slower when run on Windows 2000 operating system.

2. Hardware requirements must be considered when deploying/installing .NET applications. The minimum hardware requirement for a system running a .NET application is a Pentium 90MHz with 32 MB of RAM. For best performance, a newer system is recommended along with a minimum of 1 GB of RAM.
3. If the .NET Framework 2.0 is not already installed, it may be obtained from the following link:
<https://www.microsoft.com/en-us/download/details.aspx?id=22>

4 Quick Start

This section shows the quick start for the VSC8211.

4.1 Board Configuration

Prior to powering the board, ensure that the jumpers and switches are in the following positions.

Table 1 • Switch and Jumper Configuration

| Switch/Jumper | Position |
|-------------------------|---|
| J23 (MDC) | Jumper installed connecting DUT MDC to F340 SCL NOTE: This is due to a layout error on the PCB. Refer to Section 2.1.9 for additional details. |
| J23 (MDIO) | Jumper installed connecting DUT MDIO to F340 SDA NOTE: This is due to a layout error on the PCB. Refer to Section 2.1.9 for additional details. |
| J15 (TRSTB) | Jumper installed connecting to GND. This is not required when R35 is installed. |
| J13 (XTAL1/REFCLK) | Jumper installed connecting center pin to XTAL. |
| J8 (PLL ENABLE/DISABLE) | Jumper installed connecting center pin to PLL ENABLE. |
| SW1 | Hold in the left position during power-up and reset. |

4.1.1 Power Up

Provide 5 VDC to the board by plugging in the power cable (included in the kit) to J24. Two green LEDs should illuminate: D12 on the left side of the board indicating 3.3 VDC present, and D14 indicating 1.2 VDC present.

4.1.2 Clock Reset

Power must be applied and the clock (either 25 MHz or 125 MHz) must be active at the correct frequency for the prescribed period of time in the datasheet before the RESETB pin is released. PLLMODE and OSCDISB pins are sampled during the device power-up or on assertion of RESETB pin.

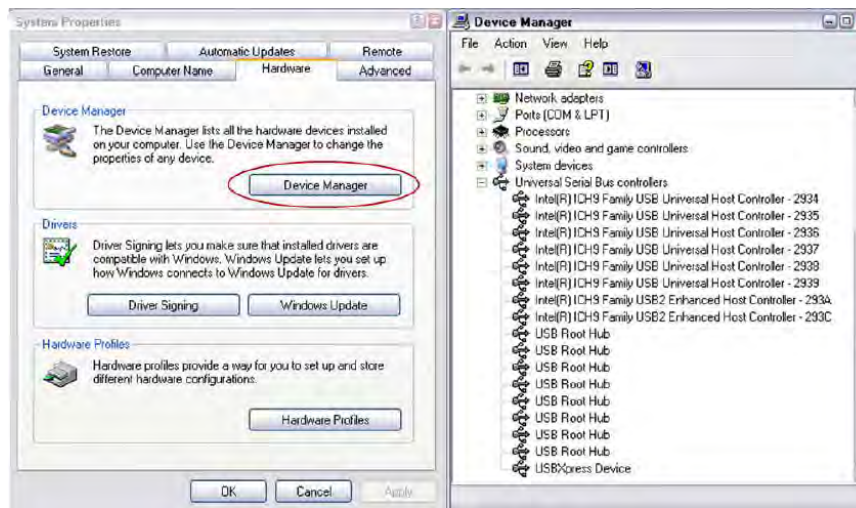
The board will be shipped configured for use of the 25 MHz crystal thus OSCDISB must be pulled up and PLLMODE must be pulled down during power-up or assertion of RESETB by setting J8 to the PLL enable position and holding SW-1 in the 25 MHz position upon power-up.

4.2 GUI and Driver Installation

Download the VSC8211EV GUI from Microsemi's website onto a PC that has a USB port. Install the GUI by launching the setup.exe file. Once installed, connect the USB cable between the USB port of the PC and the USB connector (J20) on the evaluation board. Ensure the MDIO and MDC jumpers are properly placed from DUT to F340 on J23 to establish the connection between the VSC8211's SMI pins and the SiLab F340.

USB communication is assisted by the Silabs USBXpress® drive. If not present on the PC, the user will need to download the USBXpress development kit from the [Silicon Labs website](#). Follow the installation directions after downloading the development kit.

To ensure the USBXpress driver is installed and properly recognizing the evaluation board, go to control panel and click on System>Hardware>Device Manager, and inspect the Universal Serial Bus controllers listed to see if "USBXpress Device" appears. The figure below shows a connected USBXpress Device.

Figure 3 • USBXpress as Seen From the Device Manager Window


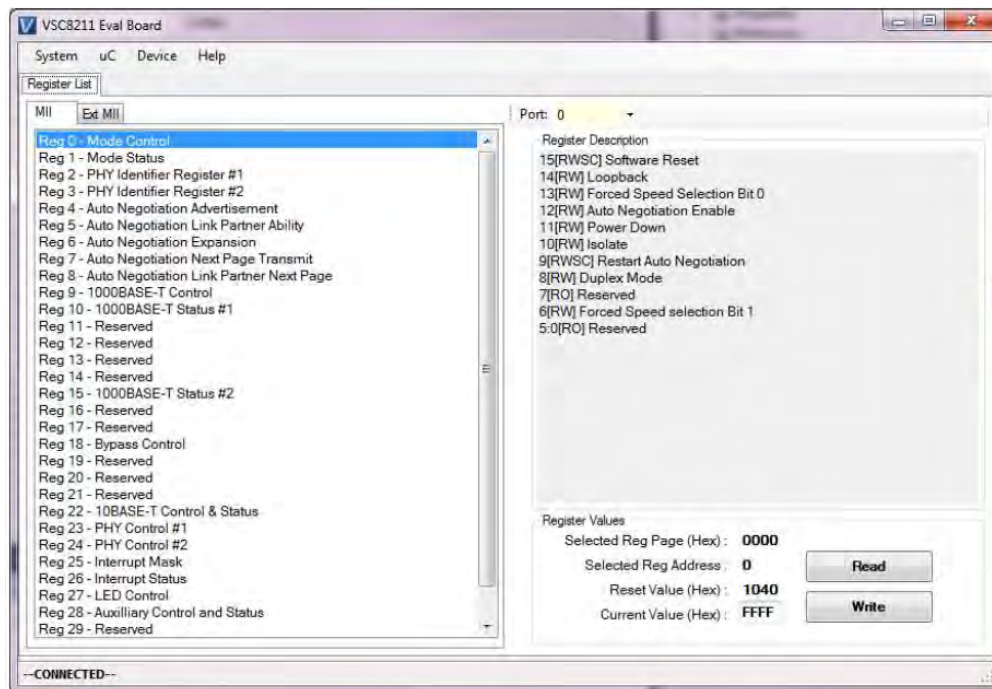
4.3 Using the GUI

Launch the GUI either by clicking on the desktop shortcut or clicking on the “Start>Programs>Vitesse Semiconductor Corp - VSC8211_Evaluation_System” icons. The initial window will detect the attached USB devices automatically. The figure below shows a typical EVB Connection window.

Figure 4 • Connection Window


The EVB serial number should appear. If not, click on “Scan For USB Devices.” Select that EVB serial number then click “Launch GUI”. The Register List window will appear as shown in the figure below.

Figure 5 • Register List Window



Be sure the device is up and running by reading MII Register 0. It should read back 0×1040 . Reading back "0000" or "FFFF" (all 0's or all 1's) indicates a problem.

To read or write the extended MII registers, click on the "ExtMII" tab.

An initialization script may be used to configure multiple VSC8211 registers. The initialization script is simply a text file which contains a list of registers to be written. Select the device item on the top pull-down menu area and click on the "Load-All-Registers" option. A pop-up window will appear. Navigate to and select the desired script to be loaded.

As per Section 31.1 of the datasheet, there are a number of internal registers that must be changed from their default value during device initialization. Use this method to initialize the device by loading "vsc8211_workaround33_1.txt" included in the GUI package under the Script/ directory.GUI Setup.

4.4 Test Cases

4.4.1 CAT5 to SGMII with Clause 37 AutoNeg Enabled

After power-up or reset, VSC8211 as configured on the evaluation board will operate according to CAT5 to SGMII with Clause 37 Auto Negotiation enabled. The 1G Ethernet received at the RJ-45 port is routed through the VSC8211 and looped back via SGMII through SMA cables.

1. Set up the copper Ethernet traffic source (e.g., IXIA or Smartbits)
2. Connect an Ethernet cable to an RJ-45.
3. Loopback SGMII RXDOUT to TXDIN via SMA cables.
4. Monitor the link-up bit in MII Register 1, bit 2 (MII 1.2), read twice to update.
Traffic should now be flowing.

4.4.2 CAT5 to RGMII

1. Set up the copper Ethernet traffic source (e.g., IXIA or Smartbit) and connect a CAT5e cable to the RJ-45.

2. Loopback SGMII RXDOUT to TXDIN via SMA cables.
3. Write 0×1824 to MII Register 23 (Port 0, PHY Control #1). This also sets the internal RGMII TXC skew to 2.0 ns for this board.
4. Write 0×9040 to MII Register 0 (Port 0, SW Reset for PHY Control setting to take effect).
5. Monitor the link-up bit in MII Register 1, bit 2 (MII 1.2), read twice to update. Traffic should now be flowing.

4.5 Useful Registers

4.5.1 Ethernet Packet Generator

ExtMII 29E is the Ethernet Packet Generator register. Refer to datasheet for configuration options.

A bad-CRC counter is in ExtMII 23.7:0. This counter will be saturate at 0xFF and is cleared when read.

4.5.2 Far-End Loopback

When MII Register 23 bit 3 is set to 1, it forces incoming data from a link partner on the media side to be re-transmitted back to the link partner on the media interface.

4.5.3 Near-End Loopback

When MII Register 0 bit 14 is set to 1, the transmit data (TDP/TDN) on the MAC side is looped back onto the receive data (RDP/RDN pins) to the MAC.

5 Additional Information

For any additional information or questions regarding the devices mentioned in this document, contact your local sales representative.

**Microsemi Headquarters**

One Enterprise, Aliso Viejo,
CA 92656 USA
Within the USA: +1 (800) 713-4113
Outside the USA: +1 (949) 380-6100
Sales: +1 (949) 380-6136
Fax: +1 (949) 215-4996
Email: sales.support@microsemi.com
www.microsemi.com

© Microsemi. All rights reserved. Microsemi and the Microsemi logo are trademarks of Microsemi Corporation. All other trademarks and service marks are the property of their respective owners.

Microsemi makes no warranty, representation, or guarantee regarding the information contained herein or the suitability of its products and services for any particular purpose, nor does Microsemi assume any liability whatsoever arising out of the application or use of any product or circuit. The products sold hereunder and any other products sold by Microsemi have been subject to limited testing and should not be used in conjunction with mission-critical equipment or applications. Any performance specifications are believed to be reliable but are not verified, and Buyer must conduct and complete all performance and other testing of the products, alone and together with, or installed in, any end-products. Buyer shall not rely on any data and performance specifications or parameters provided by Microsemi. It is the Buyer's responsibility to independently determine suitability of any products and to test and verify the same. The information provided by Microsemi hereunder is provided "as is, where is" and with all faults, and the entire risk associated with such information is entirely with the Buyer. Microsemi does not grant, explicitly or implicitly, to any party any patent rights, licenses, or any other IP rights, whether with regard to such information itself or anything described by such information. Information provided in this document is proprietary to Microsemi, and Microsemi reserves the right to make any changes to the information in this document or to any products and services at any time without notice.

Microsemi, a wholly owned subsidiary of Microchip Technology Inc. (Nasdaq: MCHP), offers a comprehensive portfolio of semiconductor and system solutions for aerospace & defense, communications, data center and industrial markets. Products include high-performance and radiation-hardened analog mixed-signal integrated circuits, FPGAs, SoCs and ASICs; power management products; timing and synchronization devices and precise time solutions; setting the world's standard for time; voice processing devices; RF solutions; discrete components; enterprise storage and communication solutions; security technologies and scalable anti-tamper products; Ethernet solutions; Power-over-Ethernet ICs and midspans; as well as custom design capabilities and services. Microsemi is headquartered in Aliso Viejo, California, and has approximately 4,800 employees globally. Learn more at www.microsemi.com.

VPPD-03472