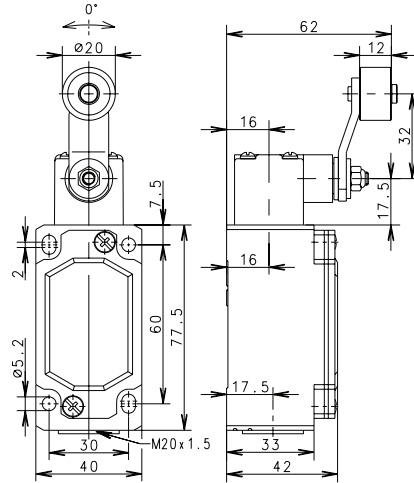


ENM2 - Safety Limit Switch



AHZ

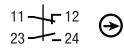


Switching Operation

1 NC/1 NO Contacts

Slow Action

608.7135.030
ENM2-U1Z AHZ



Snap Action

-

2 NC Contacts

-

-

2 NO Contacts

-

-

1 NC / 1NO Contacts
Overlapping

-

-

Replacement actuator:

Technical Information

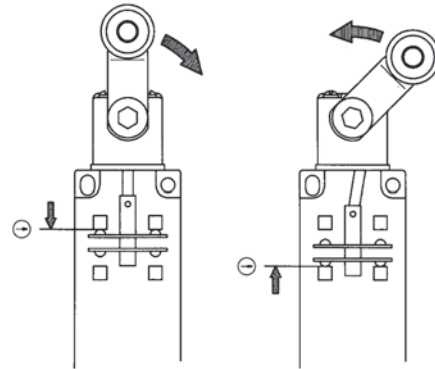
Maximum Switching Voltage	240V	
Max. Switching Amps (up to)*	10A	
B10d (up to)*	20 Million	
Mechanical Service Life (up to)*	10 x 10 ⁶	
Switching Frequency	≤ 100/min	
Operating Temperature	-30 °C to +80 °C	
Protection Rating	IP65	
Utilization Category (up to)*	AC-15, Ue/Ue 240V 3A	
Rate Insulation Voltage	400VAC	

Approvals



Special features

- Positively opening action, forward and return activation
- For special safety applications, the positive opening action of the normally-closed contacts takes place both in forward (moving in one direction) as well as in return (moving back to home position) direction
- For personal protection applications movement of the roller must be contained in a guide block in both directions



Note – if substituting actuators
AH, AHS, AHS-V, AHZ, AF, AD, AV,
DGH, DGK
– the positive conditions of the
activation may change.

After the adjustment, the user must
make sure that the part reaches the
necessary safety levels.