

**SPECIFICATIONS:**

|   |  |
|---|--|
| STEPS PER REVOLUTION: 200                     | ROTOR INERTIA: 2.7KG-CM <sup>2</sup> (0.0387 OZ-IN-SEC <sup>2</sup> )NOM |
| STEP ANGLE: 1.8°                              | DETENT TORQUE: 3.56 G-CM (49.5 OZ-IN) MIN                                |
| STEP TO STEP ACCURACY: ±0.09 DEGREES [1], [2] | INSULATION CLASS: B  |
| POSITIONAL ACCURACY: ±0.09 DEGREES [1], [3]   | WEIGHT: 3.8 KG (8.4 LBS)   |
| SHAFT RUNOUT: 0.05mm T.I.R. MAX               | TEMP. RISE: 80 °C MAX. [9]   |
| RADIAL PLAY: 0.025mm MAX W/A .5KG RADIAL LOAD | OPERATING TEMP. RANGE: -20 TO +50 °C                                     |
| END PLAY: 0.075mm MAX W/A 1KG AXIAL LOAD      | STORAGE TEMP. RANGE: -40 TO +70 °C                                       |
| BEARINGS: ABEC 3, DOUBLE SHIELDED             | RELATIVE HUMIDITY RANGE: 5 TO 99 %                                       |

|                             | 7                                   | 8                                  |                         | 1                           | 1                               |
|-----------------------------|-------------------------------------|------------------------------------|-------------------------|-----------------------------|---------------------------------|
| SPECIFICATION<br>CONNECTION | RESISTANCE<br>PER PHASE<br>OHM ±10% | INDUCTANCE<br>PER PHASE<br>mH ±20% | RATED<br>CURRENT<br>Amp | HOLDING<br>TORQUE<br>Nm Min | HOLDING<br>TORQUE<br>oz-in Min. |
| BI-POLAR SERIES             | 2.6                                 | 21.6                               | 2.8                     | 8.9                         | 1260                            |
| BI-POLAR PARALLEL           | 0.63                                | 5.4                                | 5.6                     | 8.9                         | 1260                            |
| UNI-POLAR                   | 1.29                                | 5.4                                | 4.0                     | 6.4                         | 906                             |

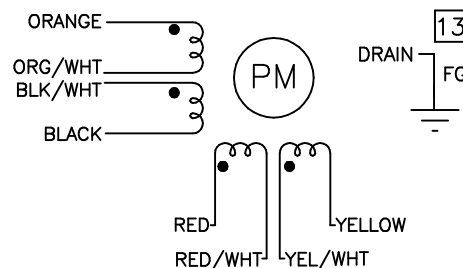
NOTES, UNLESS OTHERWISE SPECIFIED:

- 1 MEASUREMENTS MADE AT RATED CURRENT IN EACH PHASE.
- 2 BETWEEN ANY TWO ADJACENT FULL STEP POSITIONS.
- 3 MAXIMUM ERROR IN 360°.
4. HIPOT 1150 VAC, 60 Hz FOR ONE MINUTE.
5. LEADS: 8, 22AWG, 7 STRAND MIN.,UL AND CSA APPROVED, 105°C. SHIELDED CABLE, 8 COND. W/DRAIN. CABLE 666-2126.
6. INSULATION RESISTANCE: 100 MEGOHMS MIN AT 500 VDC.
- 7 MEASUREMENTS MADE WITH CABLE.
- 8 MEASURED USING AN A.C. INDUCTANCE BRIDGE, AT 1KHz, WITH CABLE.
- 9 AS MEASURED BY THE CHANGE IN RESISTANCE METHOD, WITH RATED CURRENT APPLIED TO 2 PHASES; WITH MOTOR AT REST.
10. THIS MOTOR IS MANUFACTURED IN COMPLIANCE WITH THE CURRENT EU RoHS DIRECTIVE.
- 11 MOTOR LABEL TO INCLUDE "ROHS" COMPLIANT, 'MADE IN (COUNTRY OF ORIGIN)' AND DATE CODE.
12. HIGH TORQUE MOTOR DESIGN, MICROSTEP LAMINATION, INTENDED FOR USE WITH 80VDC DRIVES WHEN WINDINGS CONNECTED IN PARALLEL AND WITH 160VDC DRIVES WHEN WINDINGS CONNECTED IN SERIES.
- 13 DRAIN WIRE TO BE CONNECTED TO INSIDE OF REAR ENDBELL.

BIPOLAR, FULL STEP, 2 PHASE ON  
PARALLEL CONNECTED

### SWITCHING SEQUENCE FOR CW ROTATION FACING MOUNTING END

| STEP | ORANGE &<br>BLK/WHT | BLACK &<br>ORN/WHT | RED &<br>YEL/WHT | YELLOW &<br>RED/WHT |
|------|---------------------|--------------------|------------------|---------------------|
| 0    | +                   | —                  | +                | —                   |
| 1    | —                   | +                  | +                | —                   |
| 2    | —                   | +                  | —                | +                   |
| 3    | +                   | —                  | —                | +                   |
| 4    | +                   | —                  | +                | —                   |

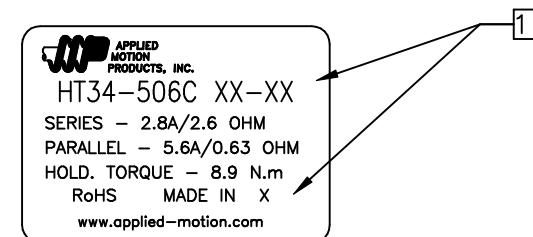



HT34-506C

## REVISIONS

[illegible]

## LABEL DETAIL



|                   |  |   |                               |                      |          |
|-------------------|--|---|-------------------------------|----------------------|----------|
| CONTRACT NO.<br>— |  |  APPLIED<br>MOTION<br>PRODUCTS, INC. |                               |                      |          |
| APPROVALS         |  | DATE  |                               | STEP MOTOR OUTLINE   |          |
| DRAWN<br>R. JONEZ |  | 10/5/12   |                               |                      |          |
| CHECKED           |  |   |                               |                      |          |
| APPROVED          |  |   |                               |                      |          |
| APPROVED          |  |   |                               |                      |          |
|                   |  | B   | COMPUTER DATA<br>BASE DRAWING | DWG NO.<br>HT34—506C | REV<br>D |
|                   |  | SCALE: NONE   |                               | SHEET 1 OF 2         |          |

