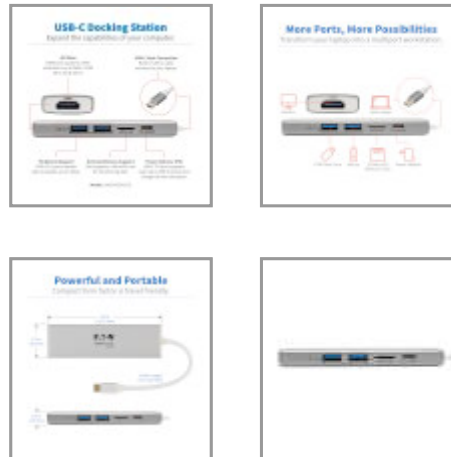


USB-C Dock - 4K HDMI, USB 3.x (5Gbps), USB-A Hub Ports, Memory Card, 60W PD Charging

MODEL NUMBER: U442-DOCK10-S



USB-C dock with PD Charging adds 4K HDMI, USB-A, USB-C and memory card ports to your laptop or tablet's USB-C or Thunderbolt 3 port.

Features

USB-C Docking Station Turns Your Device's USB-C or Thunderbolt 3 Port into a Workstation This multiport USB-C dock with PD Charging expands the potential of your Windows laptop, Chromebook, tablet or other device with a USB-C or Thunderbolt 3 port. It's ideal for transmitting digital audio and 4K video to a large display, adding a thumb drive or other USB peripheral, powering and charging a PD Charging-compliant mobile device and more—all at the same time.

Supports USB-C DisplayPort Alternate Mode for Transmitting Audio/Video Signals By connecting the built-in USB-C cable to a source device that supports USB DisplayPort Alt Mode, you can output 4K video and digital audio to a compatible monitor, television or projector without installing special software drivers.

Transmits Crystal-Clear 4K Video and Digital Audio The HDMI port supports Ultra HD video resolutions up to 3840 x 2160 (4K x 2K) at 30 Hz. A DVI display may also be connected using an HDMI to DVI adapter (sold separately). HDCP 2.2 compliance allows you to stream 4K Amazon and Netflix content with no complications.

USB-A Ports Connect Keyboards, Thumb Drives and Other USB Peripherals Two USB 3.2 Gen 1 ports accept USB peripherals, such as flash drives, mice, keyboards and printers. They support fast data transfer rates up to 5 Gbps and are backward compatible with USB 2.0 and USB 1.1 devices. Note: Host must support USB OTG (On-the-Go).

PD 2.0 Charging Port Charges Connected Device via AC Wall Charger The USB-C Power Delivery port supports power output up to 20V 3A (60W), which is sufficient for charging and powering the connected source device, such as an Android smartphone or Chromebook. Just connect the device's AC wall charger to the USB-C PD port. Note: USB-C PD port does not support Quick Charge (QC).

Allows External Memory Access A memory card slot supports Micro SD cards for transferring data to and from your connected computer, laptop or tablet.

Built-In USB-C Cable Connects in Either Direction Connect the reversible USB-C plug to your source device's USB-C or Thunderbolt 3 port. The fumble-free USB-C plug connects in either direction to ensure fast, easy connection every time.

Highlights

- Transmits audio/video signals from sources supporting USB DisplayPort Alt Mode
- Supports Ultra HD 4K resolutions up to 3840 x 2160 @ 30 Hz for crystal-clear video
- Supports 20V 3A (60W) power output for fast-charging compatible mobile devices
- USB-A and memory card ports allow connection of flash drives and other peripherals
- Plug-and-play operation with no software required for easy, immediate installation

Applications

- Play video from your laptop or PC on an HDMI display, such as an HDTV or projector
- Transfer data to and from a USB flash drive or Micro SD memory card
- Charge your notebook or laptop by connecting its wall charger to the USB-C PD Charging port
- Connect a microphone/headset to record a podcast or listen to music

System Requirements

- Source device with USB-C or Thunderbolt 3 port that supports USB DisplayPort Alternate Mode
- Display device with HDMI or DVI* input
- Not for use with Thunderbolt monitors

*Requires adapter (sold separately)

Package Includes

- U442-DOCK10-S USB-C Dock, Silver
- Owner's manual



Powering Business Worldwide

TRIPP LITE
SERIES

Ready to Use Right Out of the Package The plug-and-play USB-C dock is specifically designed for use with Windows laptops and other notebooks, smartphones, tablets and devices equipped with a USB-C or Thunderbolt 3 port. It requires no extra software to be downloaded or installed. Its compact footprint fits easily into your desk space without taking up much valuable room.

Specifications

OVERVIEW	
UPC Code	037332213365
Product Type	Docking Station
Device Compatibility	Chromebook; Computer; Laptop; Monitor/HDTV; Projector; Tablet
Technology	HDMI; USB 3.x
Country/Region	Global
Host Connector	USB C (MALE)
VIDEO	
Video Input	USB C (MALE)
Video Output	HDMI (FEMALE)
Number of Monitors Supported	1
Video Ports	HDMI (FEMALE)
Video Ports Details	HDMI 2.0; HDCP 2.2
Resolutions Supported	HDMI: 4K 30Hz (3840 x 2160)
Supported Resolutions	3840x2160 (4K)
Max Supported Video Resolution	3840 X 2160 (4K X 2K) @ 30HZ
Recommended Cabling	P568-Series 4K HDMI Cables
Extended Mode	Yes
Mirror Mode	Yes
Max Supported Color Depth	24-bit True Color
HDR Support	No
3D Video Supported	No
Chroma Sub Sampling	4:4:4
EDID Support	Yes
DisplayPort Alt Mode	Yes
DSC Support	Yes
DATA	
Data Ports	(2) USB A (FEMALE)
Data Ports Details	(2) USB-A - USB 3.2 Gen 1 (5 Gbps)



Powering Business Worldwide

TRIPP LITE
SERIES

STORAGE	
Card Slots	MICRO SD (FEMALE)
Card Slots Details	SD 3.0
INPUT	
Built-In Cable Length (ft.)	0.49
Built-In Cable Length (m)	0.15
Built-In Cable Length (in.)	5.9
Built-In Cable Length (cm)	15
Bus Powered	Yes
Product Length (in.)	12
Product Length (cm.)	30.48
Product Length (ft.)	1
Product Length (m)	0.3
BATTERY	
Battery Charging (5V/1.5A Port)	No
POWER	
Power Consumption (Watts)	1.80
USB Power Delivery (PD) Charging Support	Yes
USB Power Delivery (PD) Charging Specification	2.0
CONNECTIONS	
Number of Ports	5
Dock Connectors	(2) USB-A, MICRO SD, HDMI, USB-C Charging
Side A - Connector 1	USB C (MALE)
Side B - Connector 1	HDMI (FEMALE)
Side B - Connector 2	(2) USB A (FEMALE)
Side B - Connector 3	MICRO SD (FEMALE)
Side B - Connector 4	USB C (FEMALE)
Connector Plating	Nickel
Connector Style	Straight
CHARGING	
Number of Charging Ports	3



Powering Business Worldwide

TRIPP LITE
SERIES

Total Charging Watts	60
Charging Port Type	(2) USB A (FEMALE); USB C (FEMALE)
Charging Ports	USB-C: 60W (20V 3A) Power Delivery (PD 2.0)
Charging Ports Details	Charge the host laptop with up to 60W (20V/3A) of power via the PD 2.0 charging portTwo USB-A ports provide up to 0.9A each for connecting mobile devices
Charging Ports / Amps	(2) 0.9A; (1) 3A
Compatible Devices	Chromebook; Laptop; Smartphone

PHYSICAL

Color	Silver
Material of Construction	Aluminium
Cable Jacket Color	White
Cable Jacket Material	PVC
Cable Jacket Rating	VW-1
Cable Outer Diameter (OD)	4.0mm
Wire Gauge (AWG)	34
Cable Length (ft.)	0.49
Cable Length (m)	0.15
Cable Length (in.)	5.91
Cable Length (cm)	15
Total Number of Ports	5
Shipping Dimensions (hwd / in.)	0.80 x 5.70 x 3.20
Shipping Weight (lbs.)	0.20
Unit Dimensions (hwd / in.)	0.510 x 4.500 x 1.300
Unit Dimensions (hwd / cm)	1.3 x 3.3 x 11.35
Unit Dimensions (hwd / mm)	13 x 33 x 113.5
Unit Packaging Type	Box
Unit Weight (lbs.)	0.15
Unit Weight (kg)	0.07

ENVIRONMENTAL

Operating Temperature Range	32° to 131°F (0° to 55°C)
Storage Temperature Range	14° to 158°F (-10° to 70°C)
Relative Humidity	5% to 95% RH, Non-Condensing
BTUs	6.1 BTU/Hr
Operating Humidity Range	10 to 85% RH, Non-condensing
Storage Humidity Range	5 to 90% RH, Non-condensing



Powering Business Worldwide

TRIPP LITE
SERIES

Power Provided to Connected Device(s)	USB-A: 5V/0.9A (4.5W) , USB-C: 20V/3A (60W)
FEATURES & SPECIFICATIONS	
USB Hub Ports	Yes
Number of USB Hub Ports	2
USB Specification	USB 3.0 (up to 5 Gbps); USB 3.1 Gen 1 (up to 5 Gbps); USB 3.2 Gen 1 (up to 5 Gbps)
MST Support	No
Multi-Resolution Support	No
Ethernet Support	No
UASP Support	No
Auto MDIX Support	No
Full Duplex Support	No
Suspend Mode Support	No
Remote Wakeup Support	No
SD Card Specification	Micro SD
HDCP Specification	2.2
Driver Required	No
STANDARDS & COMPLIANCE	
TAA Compliant Option	N
Product Compliance	RoHS; CE (Europe); REACH; FCC (USA)
WARRANTY & SUPPORT	
Product Warranty Period (Worldwide)	3-year limited warranty

1000 Eaton Boulevard
Cleveland, OH 44122
United States
<https://tripplite.eaton.com>

© 2025 Eaton. All Rights Reserved.
Eaton is a registered trademark. All other trademarks
are the property of their respective owners.