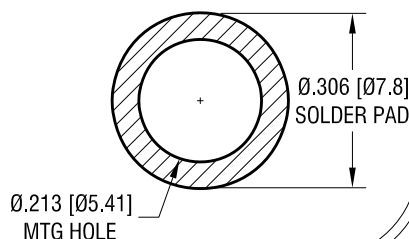
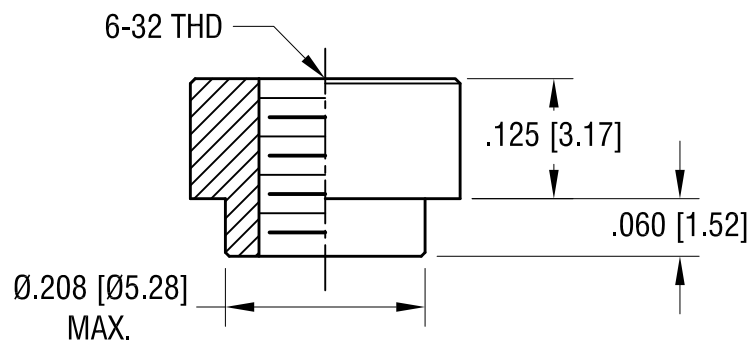
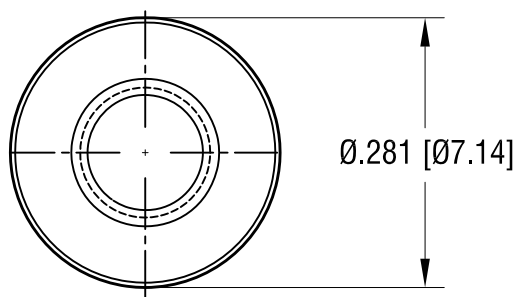


MOUNTING DETAIL



ACTUAL SIZE



NOTES:

- SUPPLIED ON TAPE AND REEL ONLY.
TAPE AND REEL SPECIFICATIONS:
- TAPE:
MAT'L - ALL CONDUCTIVE POLYSTYRENE CARRIER
ANSI/EIA-481 STANDARD
- REEL:
13" [330.2] DIA. 1000 PIECES PER REEL

- REELS TO BE SUPPLIED IN SEALED BAGS
WITH VCI PROTECTION.
- KAPTON TAPE ADDED TO TOP SURFACE
OF STANDOFF.

KEYSTONE ELECTRONICS CORP.

www.keyelco.com • NEW HYDE PARK NY 11040 • Tel (516)328-7500

PART NAME

SM STANDOFF

MATERIAL

STEEL

FINISH

MATTE TIN PLATE

DRN BY

NT

DATE

4.11.16

APP'D

RH

SCALE

5X, 1X

TOLERANCES

INCH

[MM]

DECIMAL

$\pm .005 [\pm 0.13]$

ANGULAR

$\pm 1^\circ$

UNLESS OTHERWISE SPECIFIED

CODE

DWG NO.

C

4892

7.29.24

SPECIFIED VCI PACKAGING.

B

8.15.17

CHANGE AS PER ECN 17-053

A

DATE

DESCRIPTION

REV.