

THE INFORMATION CONTAINED HEREIN IS CONSIDERED
"PROPRIETARY" TO BEL FUSE INC. AND SHALL NOT BE
COPIED, REPRODUCED OR DISCLOSED WITHOUT THE
WRITTEN APPROVAL OF BEL FUSE INC.

RoHS
2002/95/EC



LED 2 & 4 POLARITY			LED 1 & 3 POLARITY		
PIN 7	PIN 8	COLOR	PIN 9	PIN 10	COLOR
+	-	GREEN	+	-	GREEN

ELECTRICAL CHARACTERISTICS @ 25°C

URNS RATIO

TP1 1CT : 1CT ±2%

TP2 1CT : 1CT ±2%

OCL @ 100kHz/100mVRMS 350μH MIN.

8mA DC BIAS (0°C - 70°C)

INS. LOSS

0.1MHz TO 1MHz -1.1 dB MAX

1MHz TO 65MHz -0.5 dB MAX

65MHz TO 100MHz -1.0 dB MAX

RET. LOSS (MIN) @ 100ΩHMS ±15%

0.5MHz-40MHz -18 dB

40MHz-80MHz -12+20LOG(f/80MHz) dB

CM TO CM REJ

100kHz - 100MHz -30 dB MIN

CM TO DM REJ

100kHz - 100MHz -35 dB MIN

CROSS TALK (TX - RX)

100kHz - 100MHz -35 dB MIN

HIPOT (Isolation Voltage): 1500 Vrms or 2250 VDC

100% OF PRODUCT TESTED IN PRODUCTION

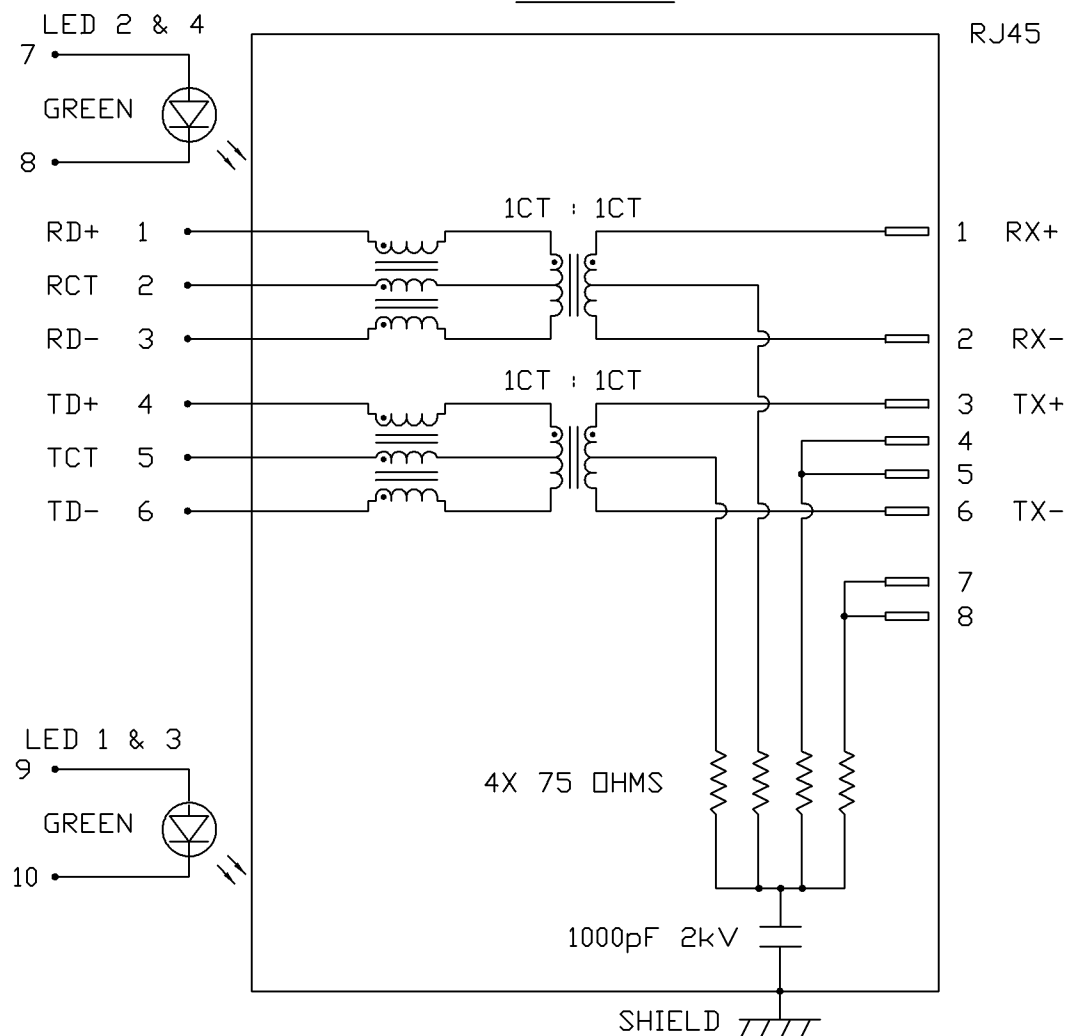
TO COMPLY WITH IEEE 802.3 REQUIREMENTS




LEDS 1, 2, 3 AND 4

VF (FORWARD VOLTAGE) IF=20mA GREEN 2.2V TYP.

λD (DOMINANT WAVELENGTH) IF=20mA GREEN 565nm TYP.

SCHEMATIC

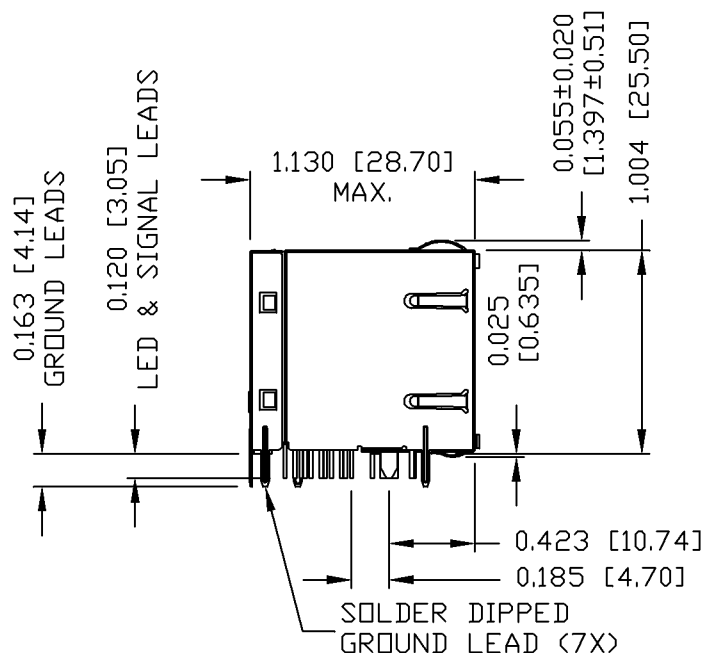


ORIGINATED BY	DATE	TITLE	PART NO. / DRAWING NO.	STANDARD DIM.		[] METRIC DIM. AS REFERENCE		 <small>COMPONENTS FOR CONNECTED PLANET</small>
CHOW WANCHUNG	11-28-08	2X4 MagJack® WITH UPPER AND LOWER LED (4 Cores)	0879-2G4R-Y9	TOL. IN INCH		UNIT : INCH [mm]	REV. : D	
DRAWN BY	DATE			.X		SCALE : N/A	SIZE : A4	
WEIDE LEE	11-28-08			.XX			PAGE : 2	
			.XXX					
			0879-2G4R-Y9_D.DWG					

bel


COMPONENTS FOR A
CONNECTED
PLANET

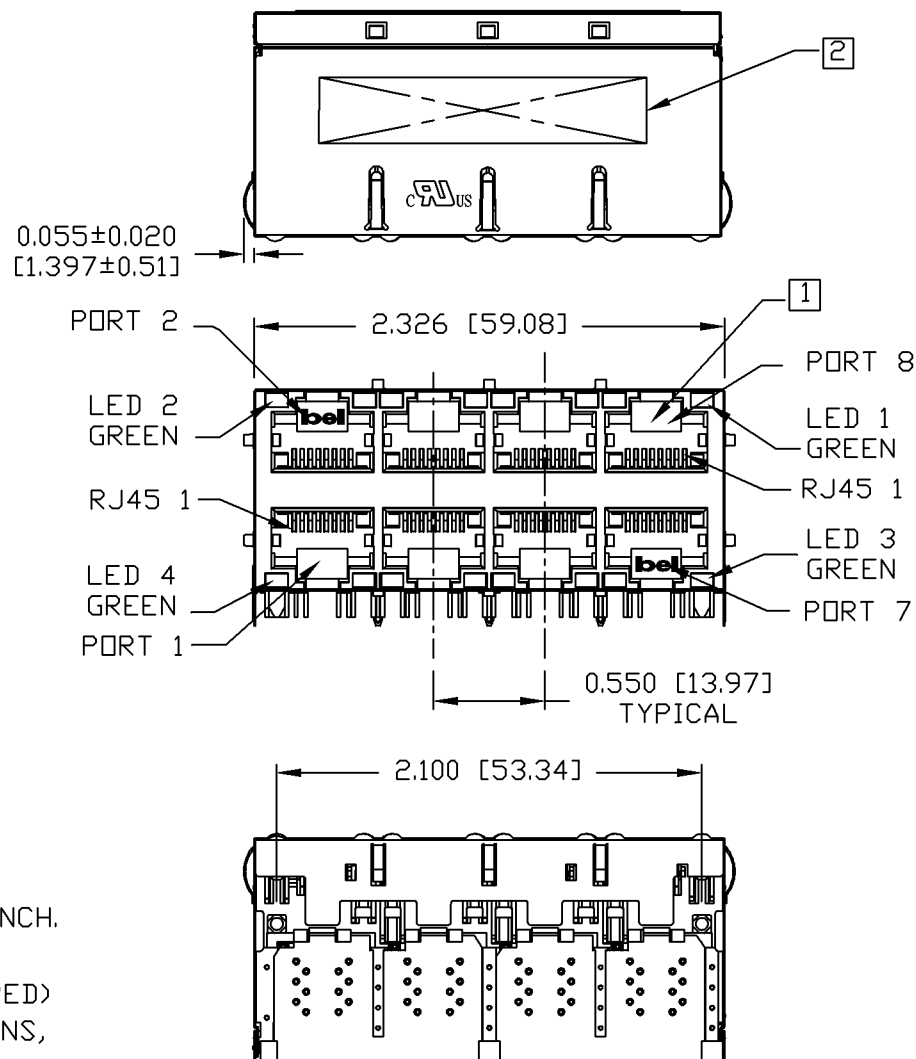
THE INFORMATION CONTAINED HEREIN IS CONSIDERED "PROPRIETARY" TO BEL FUSE INC. AND SHALL NOT BE COPIED, REPRODUCED OR DISCLOSED WITHOUT THE WRITTEN APPROVAL OF BEL FUSE INC.




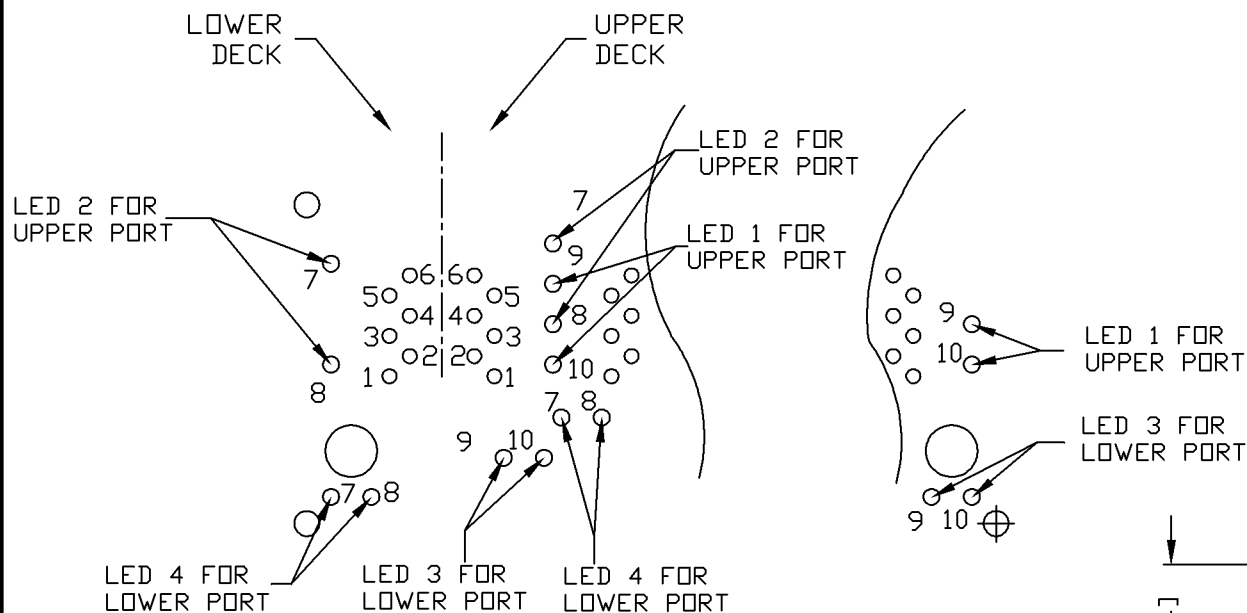
NOTES:

PLASTIC HOUSING: THERMOPLASTIC PBT
 FLAMMABILITY RATING UL 94V-0
 CONTACT PLATING: 50 MICRO-INCH HARD GOLD PLATING
 OUTPUT PINS: TIN-COATED COPPER WIRE, DIA 0.018 INCH.
 METAL SHIELD: NICKEL PLATED ON COPPER ALLOY.
 (ALL GROUND LEADS ARE SOLDER DIPPED)

1. JACK CAVITY CONFORMS TO FCC RULES AND REGULATIONS, PART 68 SUBPART F.
 2. MARK PART WITH MFG LOGO, MFG NAME, PART NUMBER, AND DATE CODE.
 3. RoHS COMPLIANCE, PER EU DIRECTIVE 2002/95/EC.
-  USUL RECOGNIZED - FILE #E196366 AND E169987.



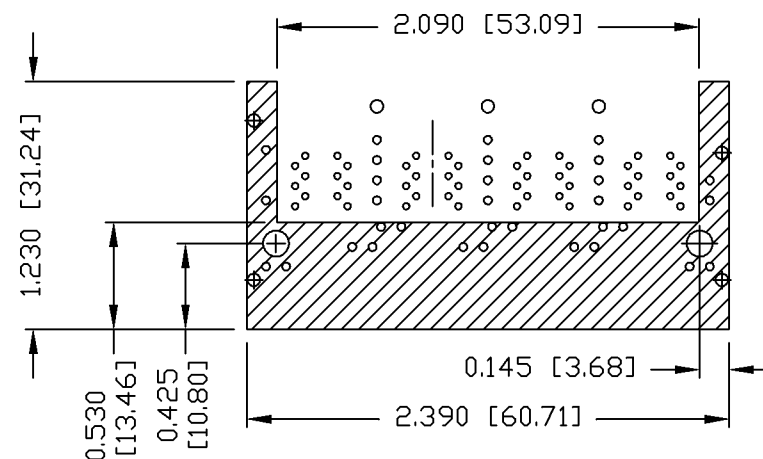
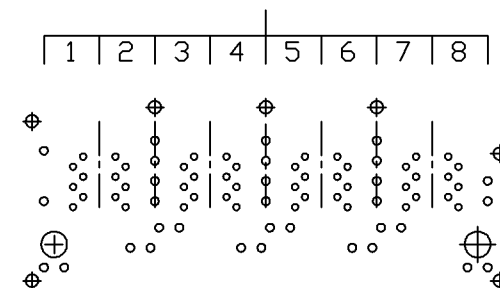
ORIGINATED BY	DATE	TITLE	PART NO. / DRAWING NO.	STANDARD DIM.		[] METRIC DIM. AS REFERENCE		
				TOL. IN INCH		UNIT : INCH [mm]	REV. : D	
ANTON LIAO	11-28-08	2X4 MagJack® WITH UPPER AND LOWER LED (4 Cores)	0879-2G4R-Y9	.X		SCALE : N/A	SIZE : A4	
DRAWN BY	DATE			.XX			PAGE : 3	
SANDY LIN	11-28-08			.XXX	±0.010			



PIN-OUT INFORMATION
(COMPONENT SIDE VIEW)

10	GREEN -
9	GREEN +
8	GREEN -
7	GREEN +
6	TD-
5	TCT
4	TD+
3	RD-
2	RCT
1	RD+

PORT ASSIGNMENT
(COMPONENT SIDE VIEW)



THE SHADED AREA ON THE CUSTOMER BOARD ARE RECOMMENDED TO BE CLEAR OFF ANY VIA HOLE OR COMPONENT PAD.

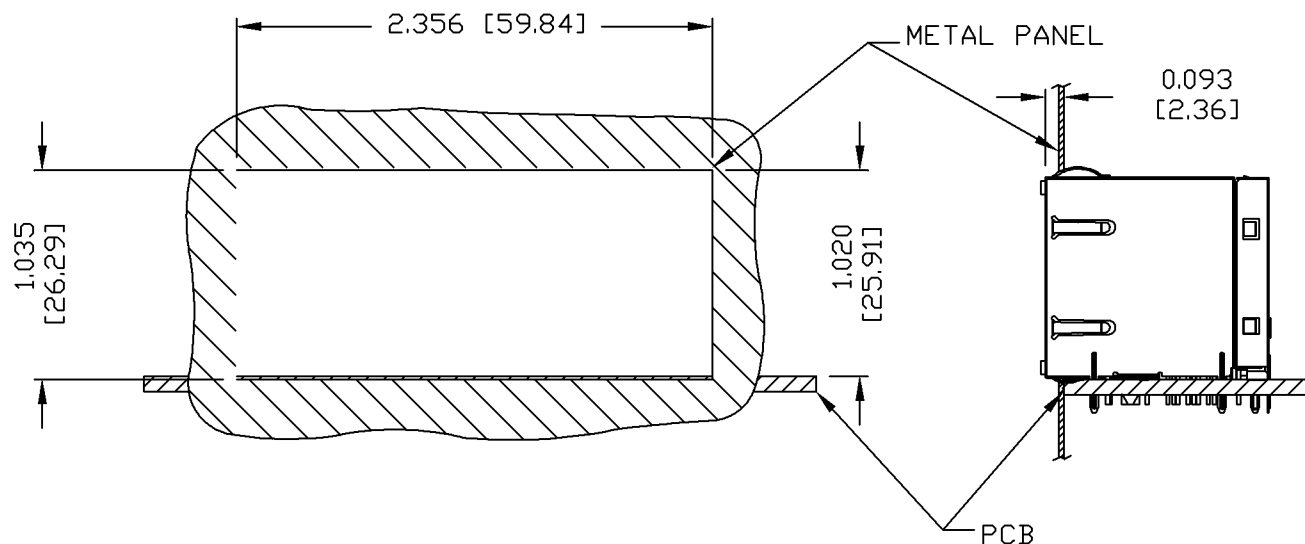
ORIGINATED BY	DATE	TITLE	PART NO. / DRAWING NO.	STANDARD DIM. TOL. IN INCH	[] METRIC DIM. AS REFERENCE	
ANTON LIAO	11-28-08	2X4 MagJack®	0879-2G4R-Y9	.X	UNIT : INCH [mm]	REV. : D
DRAWN BY	DATE	WITH UPPER AND LOWER LED	FILE NAME	.XX	SCALE : N/A	SIZE : A4
SANDY LIN	11-28-08	(4 Cores)	0879-2G4R-Y9_D.DWG	.XXX ±0.004	⊕ - - - ⊖	PAGE : 4

RoHS
2002/95/EC





SUGGESTED PANEL OPENING



NOTE:

THE DISTANCE OF PANEL INSIDE SURFACE RELATIVE TO FRONT SURFACE OF PART IS ONLY A SUGGESTION.
IN CASE THIS DISTANCE IS DIFFERENT, THE REQUIRED PANEL OPENING DIMENSIONS CHANGE ACCORDINGLY.

PACKING INFORMATION

PACKING TRAY : 0200-9999-Q1 (TOP)
0200-9999-Q2 (BOTTOM)

PACKING QUANTITY : 20 PCS FINISHED GOODS PER TRAY
7 TRAYS (140 PCS FINISHED GOODS) PER CARTON BOX

NOTE : CARDBOARDS ARE PLACED BETWEEN LAYERS OF PACKING TRAY INSIDE CARTON BOX
(INCLUDE THE UPPERMOST AND LOWERMOST TRAY)

ORIGINATED BY	DATE	TITLE	PART NO. / DRAWING NO.	STANDARD DIM. TOL. IN INCH	[] METRIC DIM. AS REFERENCE
ANTON LIAO	11-28-08	2X4 MagJack®	0879-2G4R-Y9		UNIT : INCH [mm] REV. : D
DRAWN BY	DATE	WITH UPPER AND LOWER LED (4 Cores)	FILE NAME	.X	SCALE : N/A SIZE : A4
SANDY LIN	11-28-08		0879-2G4R-Y9_D.DWG	.XX	
				.XXX ±0.004	PAGE : 7