

Product data sheet

Specifications



single phase relay, Harmony Solid State Modular Relays, 6A, DIN rail mount, zero voltage switching, input 90 to 140V AC, output 24 to 280V AC

SSM1A16F7

Product availability: Stock - Normally stocked in distribution facility

Main

Range of Product	Harmony Solid State Relays
Device short name	SSM
Product or Component Type	Modular DIN rail relay
Number of channels	1
Number of phases	1 phase
Output switching mode	Zero voltage switching

Complementary

Product configuration type	Relay configuration
Mounting Support	Symmetrical DIN rail
Line Rated Current	6 A
Output voltage	24...280 V AC
[Uc] control circuit voltage	90...140 V AC
Tightening torque	0.5...0.8 N.m for input 0.5...0.8 N.m for output
Connections - terminals	Screw terminals 1 x 0.3...1 x 1.5 mm², AWG 22...AWG 16) input Screw terminals 1 x 0.3...1 x 2.5 mm², AWG 22...AWG 14) output
maximum capacitance	10 pF for input/output
Insulation resistance	1000 MOhm at 500 V DC
Local signalling	LED (green) for input status
Minimum switching voltage	90 V AC turn-on
Maximum switching voltage	10 V AC turn-off
input current	3...5 mA
Solid state output type	Zero voltage switching SCR output
Load current	0.15...6 A
transient overvoltage	600 V
Surge current	285 A 16.6 ms 300 A 20 ms
Maximum voltage drop	<1.3 V on-state
Maximum Horse Power Rating	0.16 hp 104 °F (40 °C) 240 V AC

Price is "List Price" and may be subject to a trade discount – check with your local distributor or retailer for actual price.

Disclaimer: This documentation is not intended as a substitute for and is not to be used for determining suitability or reliability of these products for specific user applications

Maximum I ² t for fusing	410 A ² .s for 10 ms at 50 Hz 375 A ² .s for 8.33 ms at 60 Hz
Maximum leakage current	0.1 mA off-state
DV/dt	500 V/μs off-state at maximum voltage
Response time	0.5 cycle (turn-on) 30 ms (turn-off)
power factor	0.5 (with maximum load)
Overvoltage category	III
Width	0.4 in (11 mm)
Height	3.6 in (90.3 mm)
test button	Without test button
Depth	3.3 in (83.7 mm)
Net Weight	0.11 lb(US) (0.05 kg)

Environment

Flame retardance	V0 conforming to UL 94
Dielectric strength	4 kV AC for input/output 4 kV AC for input or output to case
Pollution degree	2
Standards	IEC 61000 IEC 62314 IEC 60950-1
Product Certifications	UL CSA
Marking	CE
IP degree of protection	IP20
Ambient Air Temperature for Operation	-22...176 °F (-30...80 °C)
Ambient Air Temperature for Storage	-22...212 °F (-30...100 °C)

Ordering and shipping details

Category	US10CP222375
Discount Schedule	0CP2
GTIN	3606480579370
Returnability	Yes
Country of origin	MX

Packing Units

Unit Type of Package 1	PCE
Number of Units in Package 1	1
Package 1 Height	0.39 in (1.0 cm)
Package 1 Width	3.54 in (9.0 cm)
Package 1 Length	3.66 in (9.3 cm)
Package 1 Weight	2.6 oz (74.0 g)
Unit Type of Package 2	S02

Number of Units in Package 2	96
Package 2 Height	5.91 in (15.0 cm)
Package 2 Width	11.81 in (30.0 cm)
Package 2 Length	15.75 in (40.0 cm)
Package 2 Weight	16.526 lb(US) (7.496 kg)

Environmental Data

Schneider Electric aims to achieve Net Zero status by 2050 through supply chain partnerships, lower impact materials, and circularity via our ongoing “Use Better, Use Longer, Use Again” campaign to extend product lifetimes and recyclability.

[Environmental Data explained >](#)

[How we assess product sustainability >](#)

Environmental footprint	
Environmental Disclosure	Product Environmental Profile

Use Better

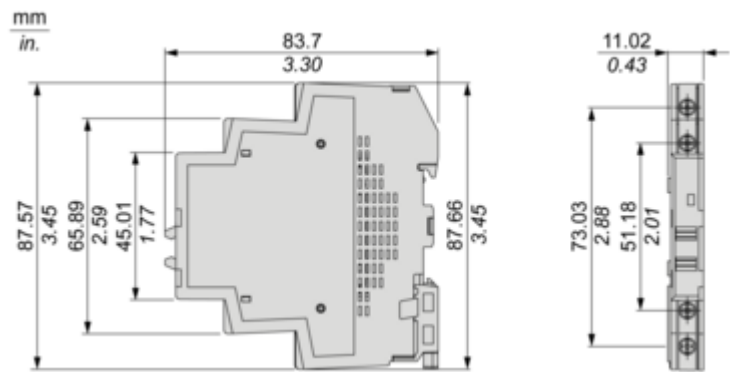
Materials and Substances	
Packaging made with recycled cardboard	Yes
Packaging without single use plastic	Yes
EU RoHS Directive	Pro-active compliance (Product out of EU RoHS legal scope)
California proposition 65	WARNING: This product can expose you to chemicals including: Lead and lead compounds, which is known to the State of California to cause cancer and birth defects or other reproductive harm. For more information go to www.P65Warnings.ca.gov

Use Again

Repack and remanufacture	
Circularity Profile	End of Life Information
Take-back	No

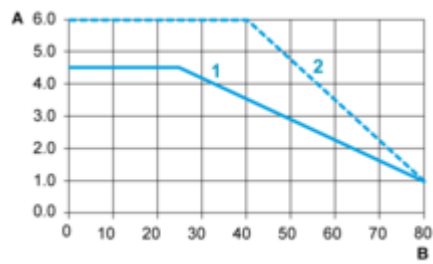
Dimensions Drawings

Dimensions



Performance Curves

Derating Curves



- A : Load Current (Amperes)
B : Ambient Temperature (°C)
1 : Multiple units, no minimum spacing between components
2 : Installed single unit, distance to adjacent components more than 11 mm

Technical Illustration

Dimensions

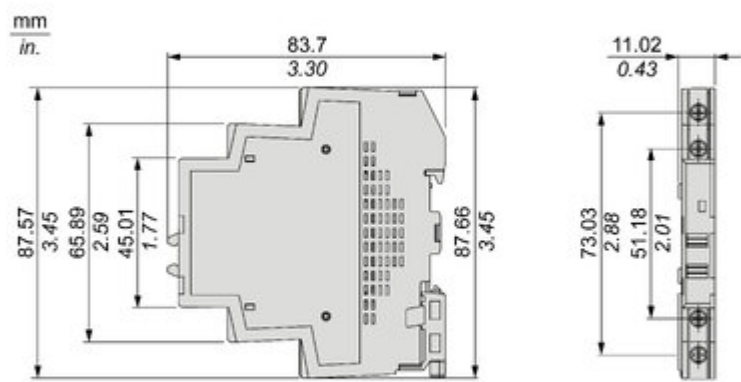
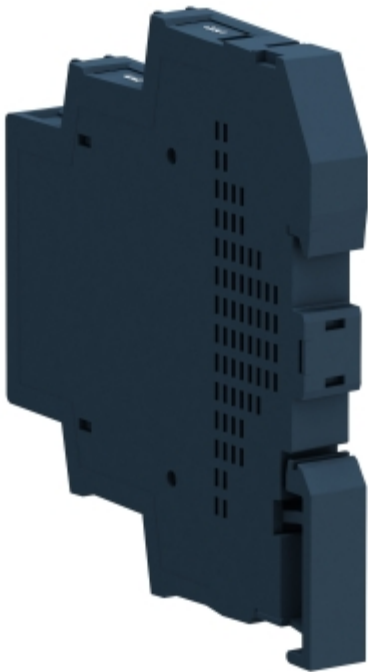


Image of product / Alternate images

Alternative



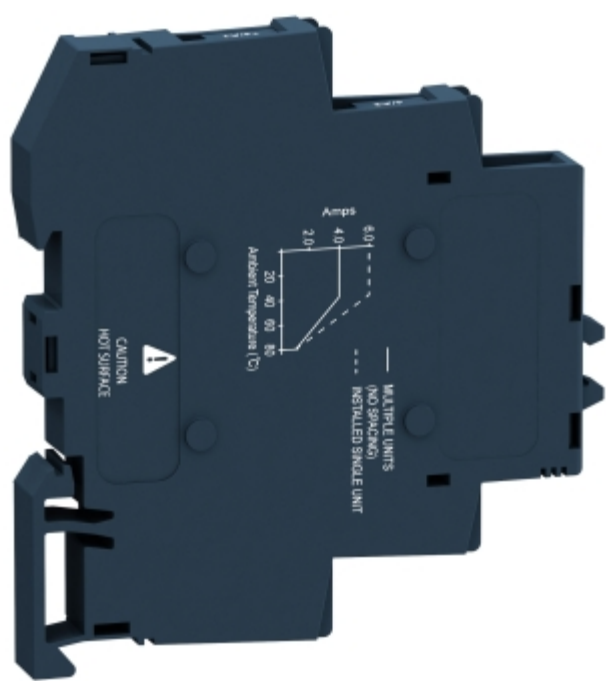


Image of product in real life situation

