

Product data sheet

Specifications



Power Relay, Type C, 2 hp, 30A resistive at 300VAC, DPDT, 2 normally open and 2 normally closed contact, 24VDC coil

8501CDO16V53

Product availability: Stock - Normally stocked in distribution facility

Main

product range	Power Relay 8501C
product type	Power relay
short name	type C
[In] rated line current	30 A
device application	Suited for controlling small single phase motors and other light loads
switch function	DPDT
contact composition	2 NO/2 NC
[Uc] control circuit voltage	24 V DC
horsepower rating	2.0 hp
maximum switching voltage	600 V AC

Complementary

class number	8501
phase	1 phase
terminal connects	Screw clamp terminal
wire range	AWG 10 copper
terminal tightening torque	11...15 lbf.in (1.2...1.7 N.m)
coil burden	2 W
mounting	Panel mounting

Environment

ambient temperature range - operational	-30...60 °C (-22...140 °F)
product certifications	UL listed file E78351 CCN NLDX CSA CE
height	3.12 in (79.25 mm)
width	2.5 in (63.5 mm)
depth	2.31 in (58.67 mm)

Ordering and shipping details

Category	US10CP221131
Discount Schedule	0CP2

Price is "List Price" and may be subject to a trade discount – check with your local distributor or retailer for actual price.

Disclaimer: This documentation is not intended as a substitute for and is not to be used for determining suitability or reliability of these products for specific user applications

GTIN	785901052197
Returnability	Yes
Country of origin	CN

Packing Units

Unit Type of Package 1	PCE
Nbr. of units in pkg.	1
Package 1 Height	2.50 in (6.35 cm)
Package 1 Width	2.50 in (6.35 cm)
Package 1 Length	3.30 in (8.382 cm)
Package weight(Lbs)	9.760 oz (276.691 g)

Contractual warranty

Warranty	18 months
----------	-----------


Environmental Data

Schneider Electric aims to achieve Net Zero status by 2050 through supply chain partnerships, lower impact materials, and circularity via our ongoing “Use Better, Use Longer, Use Again” campaign to extend product lifetimes and recyclability.



[Environmental Data explained >](#)

[How we assess product sustainability >](#)

Use Better

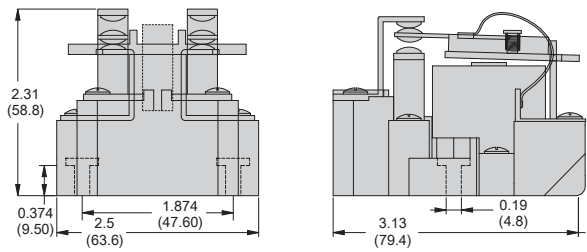
 Materials and Substances	
Packaging made with recycled cardboard	No
Packaging without single use plastic	No
EU RoHS Directive	Compliant

Use Again

 Repack and remanufacture	
Take-back	No
WEEE Label	 The product must be disposed on European Union markets following specific waste collection and never end up in rubbish bins.

Technical Illustration

Dimensions



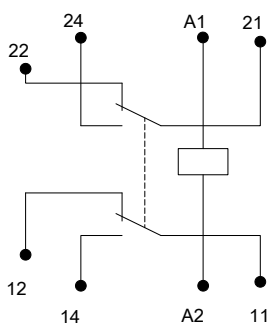
8501CO16
8501CDO16
8501CO22
8501CDO22

in.
(mm)

All dimensions are approximate.
Also refer to technical drawings and documentation.

Technical Illustration

Wiring diagram



(DPDT)
8501CO16
8501CDO16
8501CO22
8501CDO22