

Product data sheet

Specifications



flat screen, Harmony GTU, 15inch
wide display, 1366 x 768pixels
FWXGA

HMIDT752

Main

| | |
|---------------------------|---------------------------|
| Range of product | Harmony GTU |
| Product or component type | Flat screen |
| Terminal type | Touchscreen display |
| [Us] rated supply voltage | 12...24 V DC power supply |
| Supply voltage limits | 10.8...28.8 V |
| Power consumption in W | 17 W |
| Inrush current | 30 A |

Complementary

| | |
|----------------------------|---|
| Integrated connection type | USB 2.0 type A USB 2.0 type mini B |
| Touchscreen resolution | 2048 x 2048 |
| Pixel resolution | 1366 x 768 |
| Display size | 15.6 inch |
| Aspect ratio | 4:3 |
| Display type | Colour TFT LCD |
| Display resolution | 1366 x 768 pixels FWXGA |
| Display colour | 16 million colours |
| Backlight lifespan | 50000 hours |
| Touch panel | Multi-touch projected capacitive technology (PCT) 50000000 cycles |
| Function available | Brightness sensor |
| Type of cooling | Natural convection |
| Type of installation | Indoor installation |
| Cut-out dimensions | 396 (+ 1/- 0) x 277 (+ 1/- 0) mm |
| Width | 414 mm |
| Height | 295 mm |
| Depth | 69 mm |
| Product weight | 5 kg |

Environment

| | |
|-------------------------|--|
| IP degree of protection | Front panel: IP66 Front panel: IP67 |
|-------------------------|--|

Disclaimer: This documentation is not intended as a substitute for and is not to be used for determining suitability or reliability of these products for specific user applications

| | |
|---------------------------------------|---|
| NEMA degree of protection | NEMA 4X front panel |
| Standards | UL 508 ANSI/ISA 12-12-01 Class I division 2 CSA C22.2 No 213 CSA C22.2 No 142 IEC 61132-2 |
| Product certifications | KC CE RCM CULus UKCA UKEX |
| Ambient air temperature for operation | 0...55 °C conforming to IEC 61131-2 |
| Ambient air temperature for storage | -20...60 °C |
| Relative humidity | 10...90 % non-condensing |
| Operating altitude | 2000 m |
| Vibration resistance | 3.5 mm constant amplitude (f = 5...9 Hz) conforming to IEC 61131-2 9.8 m/s² (f = 9...150 Hz) conforming to IEC 61131-2 |
| Shock resistance | 147 m/s² conforming to IEC 61131-2 |
| Electromagnetic compatibility | Electrostatic discharge immunity test level 3 conforming to IEC 61000-4-2 |

Packing Units

| | |
|------------------------------|------------|
| Unit Type of Package 1 | PCE |
| Number of Units in Package 1 | 1 |
| Package 1 Height | 17.000 cm |
| Package 1 Width | 42.000 cm |
| Package 1 Length | 52.500 cm |
| Package 1 Weight | 5.474 kg |
| Unit Type of Package 2 | P12 |
| Number of Units in Package 2 | 14 |
| Package 2 Height | 90.000 cm |
| Package 2 Width | 80.000 cm |
| Package 2 Length | 120.000 cm |
| Package 2 Weight | 99.836 kg |

Environmental Data

Schneider Electric aims to achieve Net Zero status by 2050 through supply chain partnerships, lower impact materials, and circularity via our ongoing “Use Better, Use Longer, Use Again” campaign to extend product lifetimes and recyclability.

[Environmental Data explained >](#)


[How we assess product sustainability >](#)

| Environmental footprint | |
|----------------------------------|---|
| Total lifecycle Carbon footprint | 990 |
| Environmental Disclosure | Product Environmental Profile |

Use Better

| Materials and Substances | |
|--|---|
| F-gas free | Only air and vacuum used for insulation / breaking, no F-gas including SF6 |
| Packaging made with recycled cardboard | Yes |
| Packaging without single use plastic | No |
| EU RoHS Directive | Pro-active compliance (Product out of EU RoHS legal scope) |
| SCIP Number | F7bde1f0-e6bc-4b91-91d2-88584de513eb |
| REACH Regulation | REACH Declaration |
| California proposition 65 | WARNING: This product can expose you to chemicals including: Lead and lead compounds, which is known to the State of California to cause cancer and birth defects or other reproductive harm. For more information go to www.P65Warnings.ca.gov |
| Halogen-free status | Product contains halogen above thresholds |
| PVC free | No |
| Silicone-free | No |

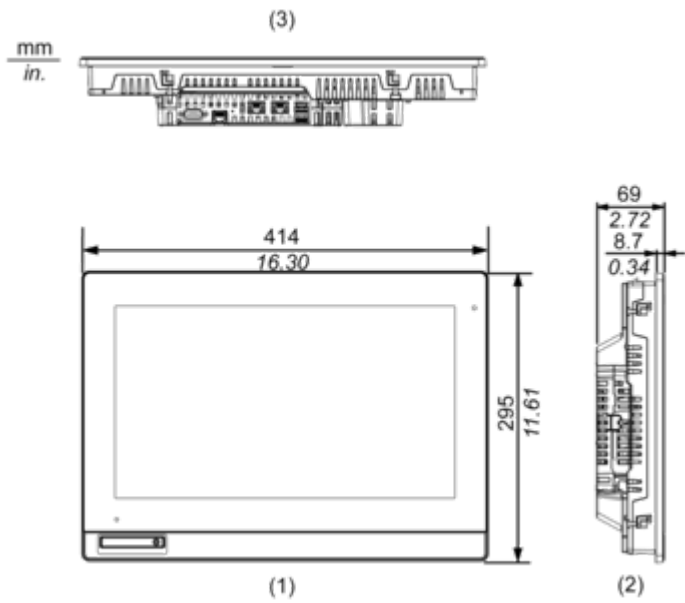
Use Again

| Repack and remanufacture | |
|---------------------------------|---|
| End of life manual availability | End of Life Information |
| Take-back | No |
| WEEE Label |  The product must be disposed on European Union markets following specific waste collection and never end up in rubbish bins |

Dimensions Drawings

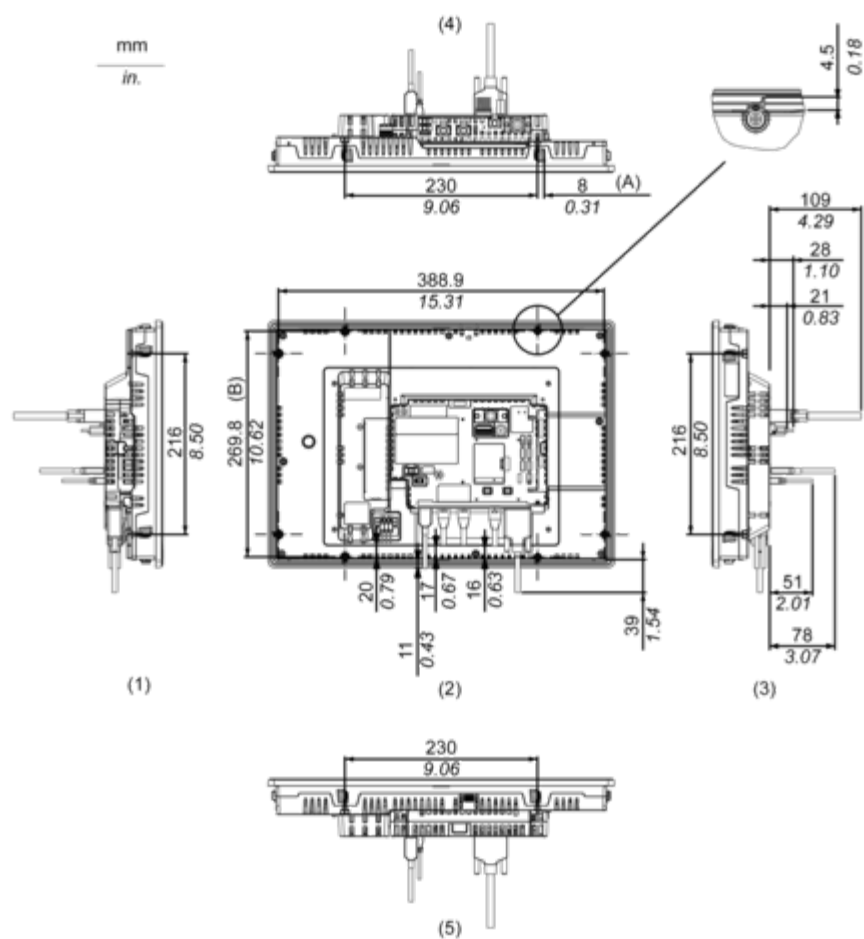
External Dimensions

Display Unit with Box Module



- (1) Front
- (2) Left
- (3) Bottom

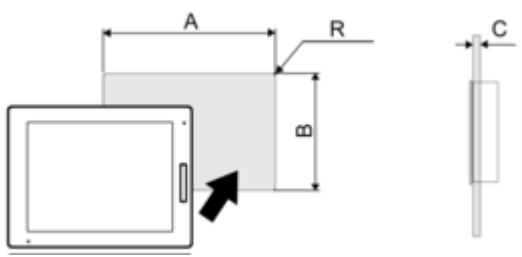
Installation with Installation Fasteners and Dimensions with Cables



- (A) Rotation area of the fastener
(B) Pitch of the center of installation fastner screws
(1) Right
(2) Front
(3) Left
(4) Bottom
(5) Top

Mounting and Clearance

Panel Cut Dimensions



Dimensions in mm

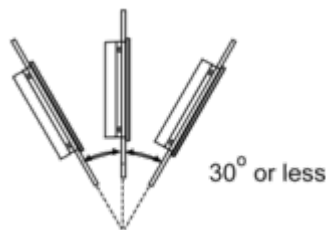
| A | B | C | R |
|-------------|-------------|---------|--------|
| 396 (+1/-0) | 277 (+1/-0) | 1.6...5 | 3 max. |

Dimensions in in.

| A | B | C | R |
|------------------|------------------|------------|-----------|
| 15.59 (+0.04/-0) | 10.91 (+0.04/-0) | 0.06...0.2 | 0.12 max. |

Installation Requirements

Mounting Angle



When installing this product in a slanted position with an incline more than 30°, the ambient temperature must not exceed 40 °C (104 °F). You may need to use forced air cooling (fan, A/C) to ensure the ambient operating temperature is 40 °C or less (104 °F or less).

Clearance

