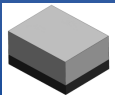


SMD 1582.4MHz SAW Filter



ABSES5AD-L100KM

Request Samples



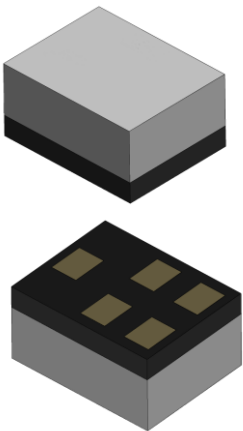
Check Inventory



1.4 x 1.1 x 0.7 mm
RoHS Compliant
MSL Level = 1

Description

This advanced multi-constellation filter supports GPS, GLONASS, BEIDOU, and GALILEO systems, making it ideal for high-accuracy global navigation. Despite its miniature 1.4 x 1.1 x 0.7 mm footprint, it delivers robust performance with a low 1.2 dB insertion loss and a wide 46.834MHz bandwidth. Its strong >30 dB out-of-band rejection ensures signal clarity in congested RF environments. This RoHS-compliant filter is perfectly suited for demanding applications in automotive telematics, UAVs, autonomous vehicles, and precision agriculture, enabling reliable positioning and tracking.



Features

- Support GPS/GLONASS/BEIDOU/GALILEO
- Bandwidth 46.834MHz
- 1.4 x 1.1 x 0.7 mm in Size
- Low Insertion Loss: 1.2 dB
- Out-of-Band Rejection: > 30 dB
- Maximum Input Power: 10 dBm
- [RoHS Compliant](#) | [MSL Level 1](#)

Applications

- RF Modules
- Transportation & Telematics
- Asset Tracking / Fleet Management
- UAVs, Robotics & Autonomous Vehicles
- Micro-Mobility Solutions
- Precision Agriculture

Ordering Information

Part Number	Description
ABSES5AD-L100KM	SMD 1582.4MHz SAW Filter on Tape & Reel
ABSES5AD-L100KM-EVB	SMD 1582.4MHz SAW Filter Evaluation Board

Note: Other options not listed may be available upon request via [Abracon online support](#)

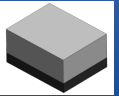


12117 Bee Caves Rd, Bldg-3, Suite 200 Bee
Cave, TX 78738
Phone: 512-371-6159 | Fax: 512-351-8858
For terms and conditions of sales, please visit:
www.abracon.com

REVISED: 09-16-25

ABRACON IS
ISO9001-2015
CERTIFIED

SMD 1582.4MHz SAW Filter



ABSES5AD-L100KM

Request Samples



Check Inventory



1.4 x 1.1 x 0.7 mm
RoHS Compliant
MSL Level = 1

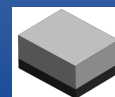
Electrical Specification

Parameters	Minimum	Typical	Maximum	Units	Notes
Center Frequency (fc)	-	1582.4	-	MHz	-
VSWR ⁽¹⁾	-	1.6	2.0	-	1559.05 - 1563.15 MHz
	-	1.2	2.0		1574.42 - 1576.42MHz
	-	1.3	2.0		1597.78 - 1605.66MHz
Insertion Loss ⁽¹⁾	-	1.8	2.2	dB	1559.05 - 1563.15 MHz
	-	1.2	1.5	dB	1574.42 - 1576.42 MHz
	-	1.5	2.0	dB	1597.78 - 1605.66 MHz
Amplitude Ripple ⁽¹⁾	-	0.2	1.0	dB	1559.05 - 1563.15MHz
	-	0.2	1.0	dB	1574.42 - 1576.42MHz
	-	0.2	1.0	dB	1597.78 - 1605.66MHz
Attenuation ⁽¹⁾ (Reference level from 0 dB)	35	38	-	dB	10 – 925 MHz
	38	42	-		1427 - 1463 MHz
	38	42	-		1710 – 1785 MHz
	38	42	-		1850 – 2025 MHz
	40	45	-		2300 – 3000 MHz
	25	30	-		4800 – 5000 MHz
Group Delay ⁽¹⁾ (+25 °C)	-	14	20	ns	1559.05 -1605.66 MHz
Group Delay Ripple	-	1.5	6.9	ns	1559.05 -1605.66 MHz
Source Impedance ⁽²⁾ (single ended)	-	50	-	Ω	
Load Impedance ⁽²⁾ (single ended)	-	50	-	Ω	
Input Power Level	-	-	10	dBm	
DC Voltage (V)	-	-	3	V	

Notes: (1) Averaged values of linear S-Parameters at +25°C

(2) A matching network is unnecessary (refer to the Measurement Circuits section)

SMD 1582.4MHz SAW Filter



ABSES5AD-L100KM

Request Samples



Check Inventory



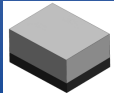
1.4 x 1.1 x 0.7 mm
RoHS Compliant
MSL Level = 1

Mechanical Specification

Parameters	Specifications
Dimension	1.4 x 1.1 x 0.7 mm
Mounting Type	SMD Mount

Environmental Specification

Parameters	Specifications
Operating Temperature Range	-40°C ~ +85°C
Storage Temperature Range	-40°C ~ +85°C
MSL level	1
ESD	N/A



SMD 1582.4MHz SAW Filter

ABSES5AD-L100KM

Request Samples

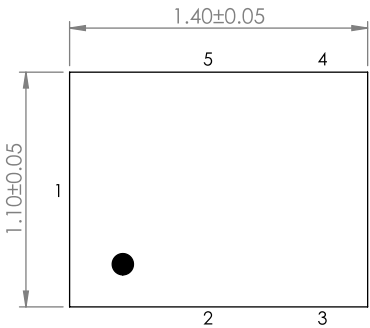


Check Inventory

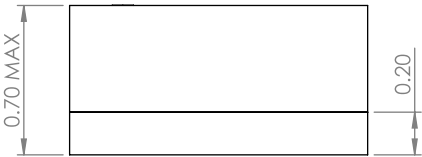


1.4 x 1.1 x 0.7 mm
RoHS Compliant
MSL Level = 1

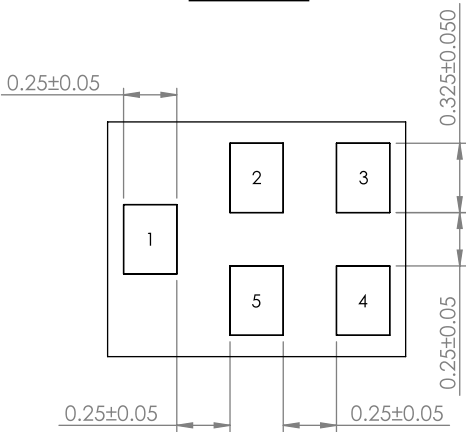
Product Dimension



TOP VIEW



FRONT VIEW

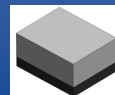


BOTTOM VIEW

Unit: mm

Pin No.	Description
1	Input
4	Output
2, 3, 5	Ground

SMD 1582.4MHz SAW Filter



ABSES5AD-L100KM

Request Samples



Check Inventory

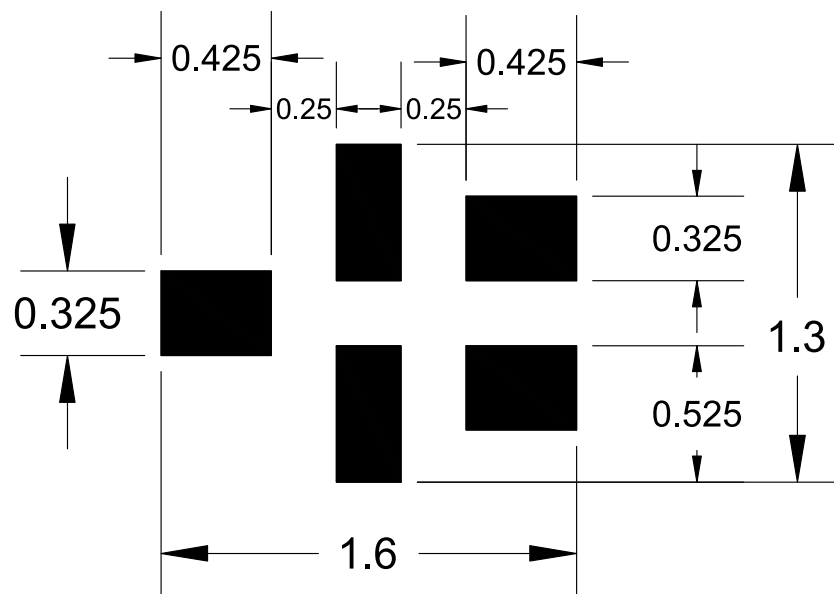


1.4 x 1.1 x 0.7 mm

RoHS Compliant

MSL Level = 1

Recommended Land Pattern

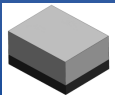


Land Pattern

Unit : mm

Please note: The line width should be designed to achieve a 50-ohm characteristic impedance, depending on the PCB material and thickness. For technical assistance, please contact [Abracon online support](#) through our online support platform.

SMD 1582.4MHz SAW Filter



ABSES5AD-L100KM

Request Samples

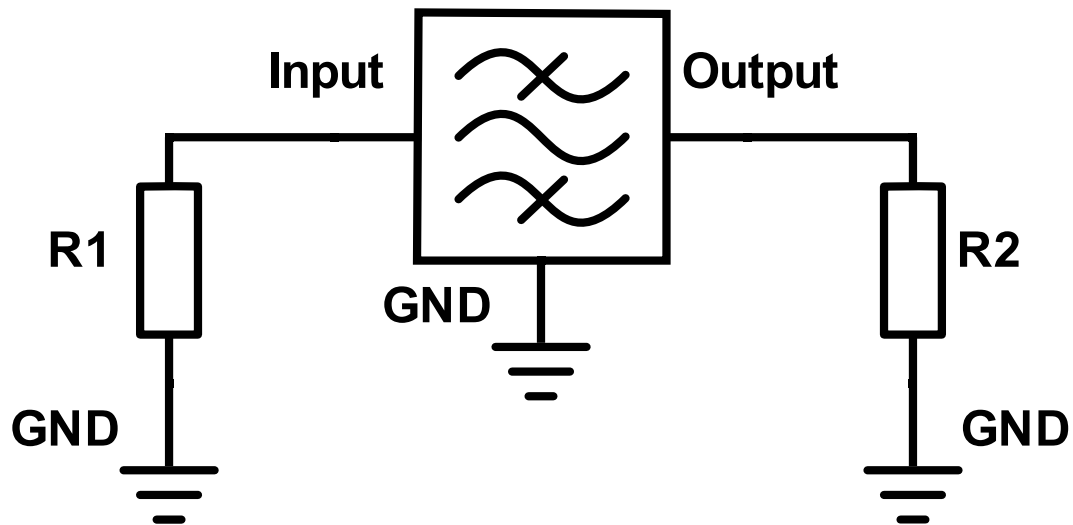


Check Inventory



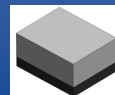
1.4 x 1.1 x 0.7 mm
RoHS Compliant
MSL Level = 1

Measurement Circuit



Port	Matching Component
Input (Pin 1)	R1: 50 Ω
Output (Pin 4)	R2: 50 Ω

SMD 1582.4MHz SAW Filter



ABSES5AD-L100KM

Request Samples



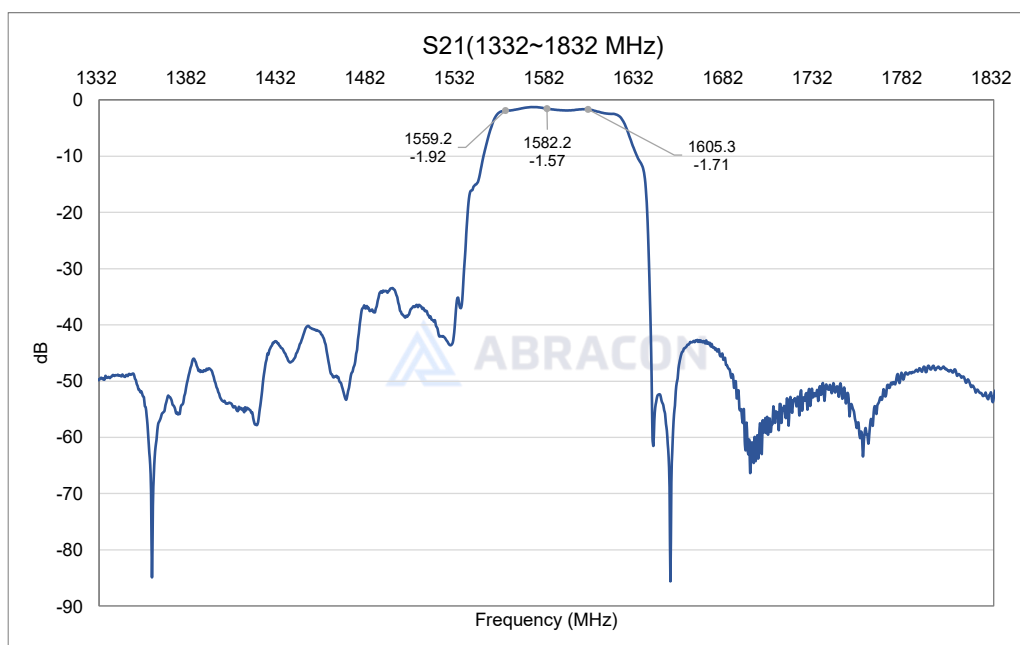
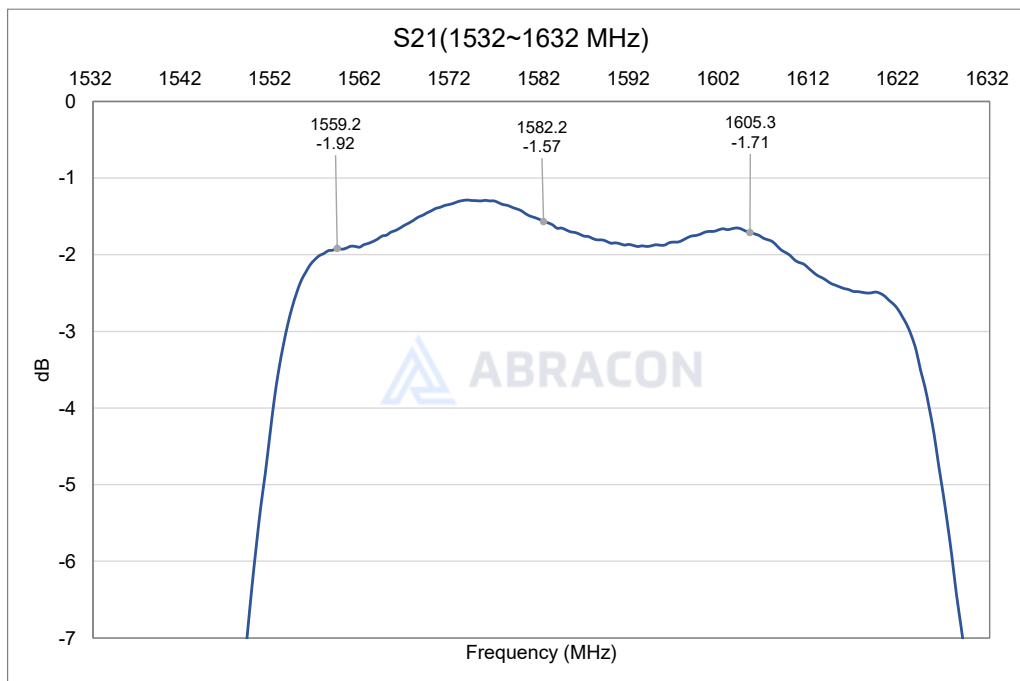
Check Inventory



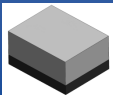
1.4 x 1.1 x 0.7 mm
RoHS Compliant
MSL Level = 1

Frequency Characteristics

S21 narrow band



SMD 1582.4MHz SAW Filter



ABSES5AD-L100KM

Request Samples

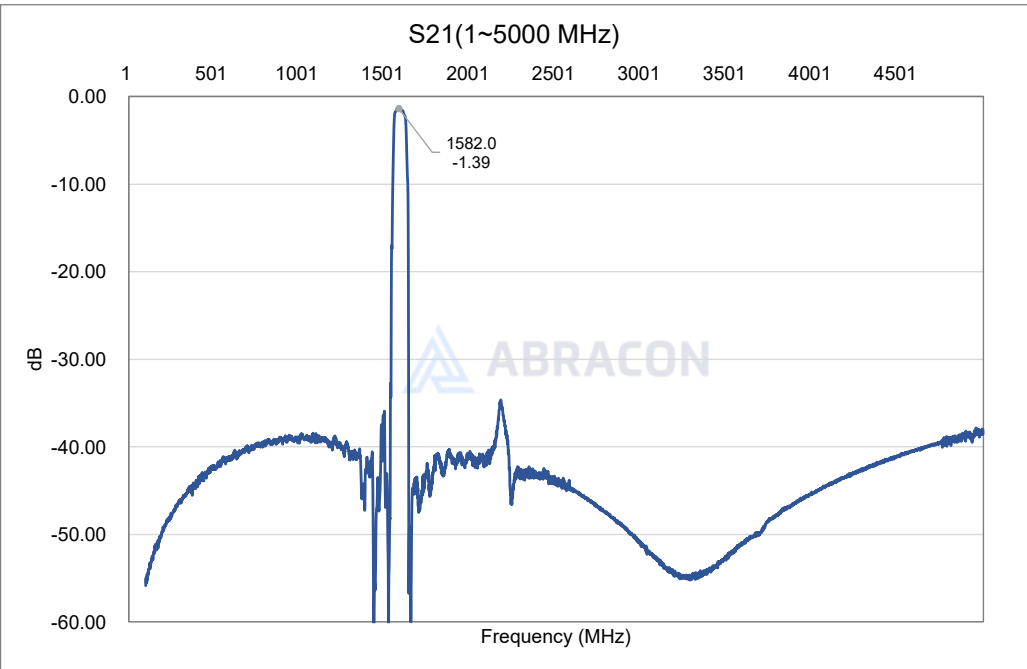


Check Inventory

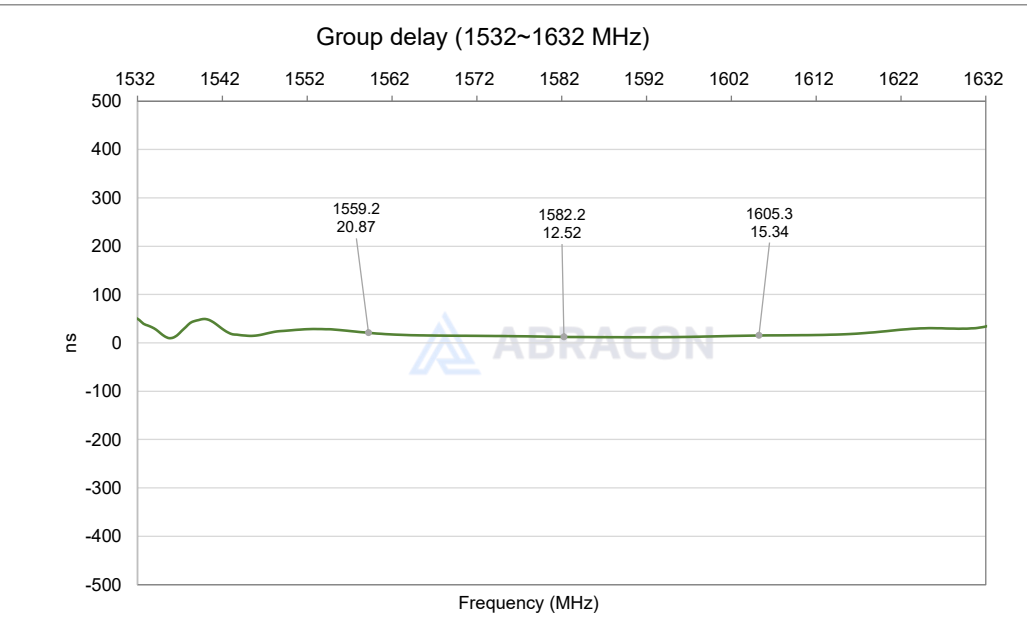


1.4 x 1.1 x 0.7 mm
RoHS Compliant
MSL Level = 1

S21 wide band



Group Delay

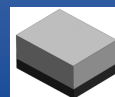


12117 Bee Caves Rd, Bldg-3, Suite 200 Bee
Cave, TX 78738
Phone: 512-371-6159 | Fax: 512-351-8858
For terms and conditions of sales, please visit:
www.abracon.com

REVISED: 09-16-25

ABRACON IS
ISO9001-2015
CERTIFIED

SMD 1582.4MHz SAW Filter



ABSES5AD-L100KM

Request Samples

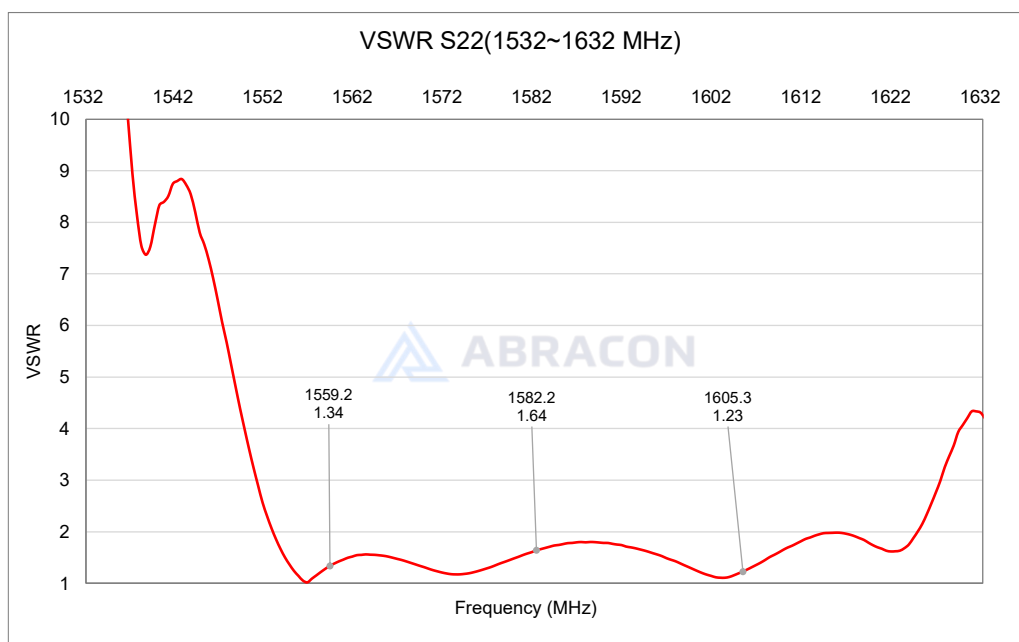
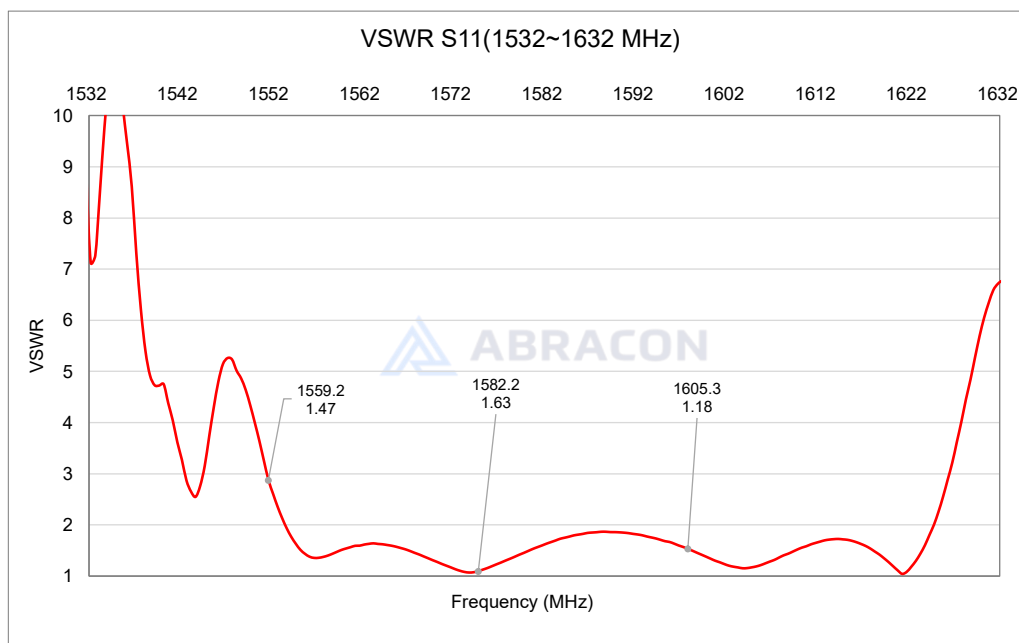


Check Inventory

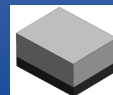


1.4 x 1.1 x 0.7 mm
RoHS Compliant
MSL Level = 1

VSWR (S11 & S22)



SMD 1582.4MHz SAW Filter



ABSES5AD-L100KM

Request Samples



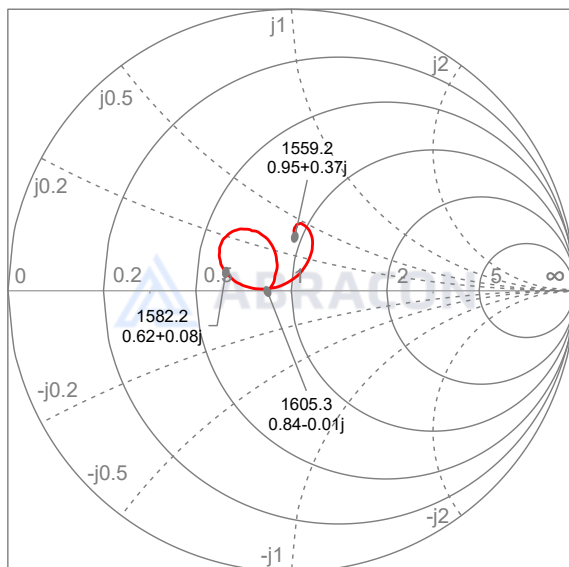
Check Inventory



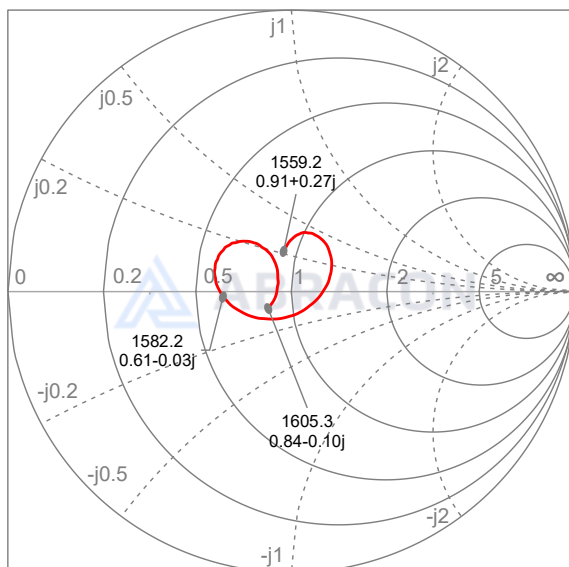
1.4 x 1.1 x 0.7 mm
RoHS Compliant
MSL Level = 1

Smith Chart (S11 & S22)

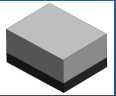
Smith chart S11 (1559~1605MHz)



Smith chart S22 (1559~1605MHz)



SMD 1582.4MHz SAW Filter



ABSES5AD-L100KM

Request Samples



Check Inventory



1.4 x 1.1 x 0.7 mm
RoHS Compliant
MSL Level = 1

Reflow Profile [JEDEC J-STD-020]

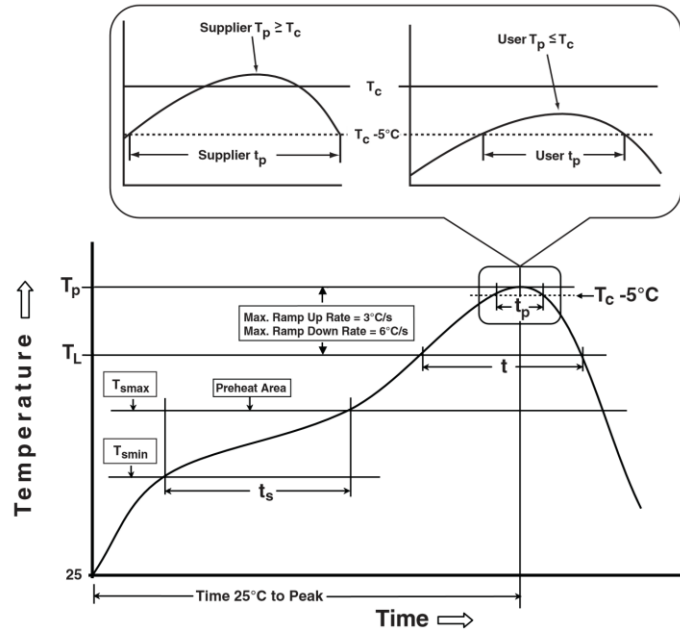


Table 1

SnPb Eutectic Process
Classification Temperatures (T_c)

Package Thickness	Volume mm ³ <350	Volume mm ³ ≥350
<2.5mm	235°C	220°C
≥2.5mm	220°C	220°C

Table 2

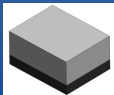
Pb-Free Process
Classification Temperatures (T_c)

Package Thickness	Volume mm ³ <350	Volume mm ³ 350-2000	Volume mm ³ >2000
<1.6mm	260°C	260°C	260°C
1.6mm - 2.5mm	260°C	250°C	245°C
>2.5mm	250°C	245°C	245°C

Profile Feature	Sn-Pb Eutectic Assembly	Pb-Free Assembly
Preheat / soak		
Temperature minimum (T_{smin})	100°C	150°C
Temperature maximum (T_{smax})	150°C	180°C
Time (T_{smin} to T_{smax}) (t_s)	60 – 120 sec.	60 – 90 sec.
Average ramp-up rate (T_{smax} to T_p)	3°C/sec. max	3°C/sec. max
Liquidous temperature (T_L)	183°C	220°C
Time at Liquidous (T_L)	60 – 150 sec.	50 – 80 sec.
Peak package body temperature (T_p)*	See Table 1	See Table 2
Time (T_p)* within 5°C of the specified classification temperature (T_c)	20 sec.	20 ~ 40 sec.
Ramp-down rate (T_p to T_{smax})	6°C/sec. max	6°C/sec. max
Time 25°C to peak temperature	6 min. max	8 min. max
Reflow cycles	2 max	2 max

*Tolerance for peak profile temperature (T_p) is defined as a supplier minimum and a user maximum.

**Tolerance for time at peak profile temperature (t_p) is defined as a supplier minimum and a user maximum.



SMD 1582.4MHz SAW Filter

ABSES5AD-L100KM

Request Samples



Check Inventory

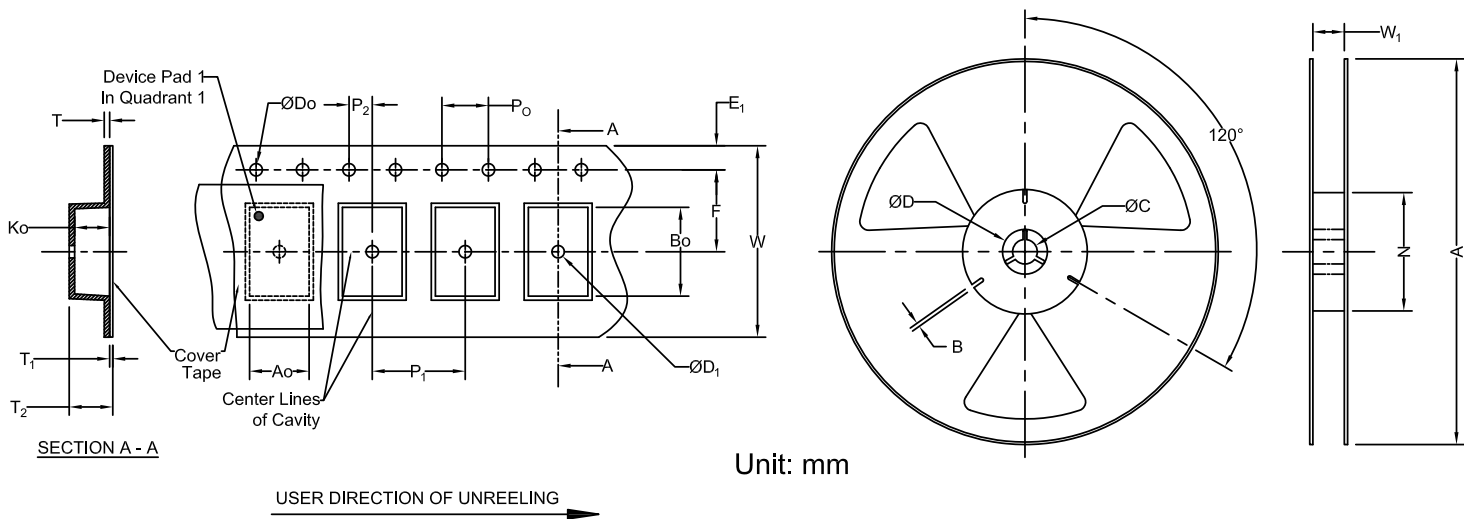


1.4 x 1.1 x 0.7 mm
RoHS Compliant
MSL Level = 1

Packaging

Tape & Reel (5,000 pcs / reel)

1. Tape & Reel Dimension



Carrier Tape Specifications (mm)

Do	D1	E1	P0	P2	T	F	P1	W	A0	B0	K0	Reel Qty
1.55 ± 0.05	0.6 ± 0.05	1.75 ± 0.1	4.0 ± 0.1	2.0 ± 0.05	0.2 ± 0.03	3.5 ± 0.05	4.0 ± 0.1	8.0 ± 0.3	1.3 ± 0.05	1.6 ± 0.05	0.68 ± 0.04	5,000

Reel Specifications (mm)

A	W1	N	C	B
180.9 ± 0.15	8.48 ± 0.15	57.12 ± 0.15	13.12 ± 0.15	2.2 ± 0.2

ATTENTION: Abracon LLC's products are Commercial-Off-The-Shelf ('COTS'), which are designed, intended, and validated for use in commercial, industrial, and automotive applications. The customer is responsible for testing and verifying the performance of an Abracon solution to meet their system-level requirements.



12117 Bee Caves Rd, Bldg-3, Suite 200 Bee
Cave, TX 78738
Phone: 512-371-6159 | Fax: 512-351-8858
For terms and conditions of sales, please visit:
www.abracon.com

REVISED: 09-16-25

ABRACON IS
ISO9001-2015
CERTIFIED