

915/2450 MHz Weather-Proof Whip Antenna



AANE-WH-0194

Request Samples



Check Inventory



Ø10 x 25 mm

RoHS/RoHS II Compliant

MSL Level = N/A

Features

- 915/2400 MHz LPWA/ISM Antenna
- Peak Gain: 0.14/2.68 dBi
- High Efficiency Up to 82%
- Fixed Right-Angle Connector
- IP67 Rated and UV Resistant
- Fully Customizable Connectors

Applications

- LPWA/LoRa/SigFox Applications
- Bluetooth/BLE/Matter/Thread
- Intelligent Lighting
- Smart Metering Solutions
- Smart Irrigation Systems
- Home Automation and Fire Prevention
- Agriculture/Environment Sensing

Product Image



915/2450 MHz Weather-Proof Whip Antenna



AANE-WH-0194

Request Samples



Check Inventory



Ø10 x 25 mm

RoHS/RoHS II Compliant

MSL Level = N/A

Electrical Specification

| Parameter | Specification | | Unit |
|-----------------------------------|------------------|-----------|------|
| Operating Frequency | 902~928 | 2400-2500 | MHz |
| VSWR(Typ.) ⁽¹⁾ | < 8.0 | < 2.0 | |
| Peak Gain ⁽¹⁾ | 0.14 | 2.68 | dBi |
| Maximum Efficiency ⁽¹⁾ | 50.15 | 82.77 | % |
| Average Efficiency | 37.5 | 80.8 | % |
| Impedance | 50 | | Ω |
| Polarization | Linear | | |
| Radiation Pattern (Azimuth) | Omni-directional | | |
| Input Power (Ambient 25°C) | 10 | | W |

(1): GND plan size:102mm x 102mm

Mechanical Specification

| Parameters | Specifications |
|----------------------------------|------------------|
| Dimension | Ø10 x 25 mm |
| Metal Plate Dimension | 102 x 102 mm |
| Material | UV Resistant ABS |
| Casing Color ⁽¹⁾ | Black |
| Recommended Torque for Mounting | < 0.565 N·m |
| Antenna Type | Whip (Monopole) |
| RF Connector Type ⁽²⁾ | SMA (M) |
| Mounting Method | Connector Mount |

(1): Other Colors Optional

(2): Fully customizable RF Connectors

Environmental Specification

| Parameters | Specifications |
|-----------------------|------------------|
| Operating Temperature | -40 °C to +85 °C |
| Storage Temperature | -40 °C to +85 °C |
| IP Rating | IP67 |
| RoHS Compliant | Yes |

915/2450 MHz Weather-Proof Whip Antenna



AANE-WH-0194

Request Samples



Check Inventory



Ø10 x 25 mm

RoHS/RoHS II Compliant

MSL Level = N/A

Ordering Information

| Part Number | Description | Connector Option |
|----------------|--|------------------|
| AANE-WH-0194-1 | 915/2450 MHz Weather-Proof Whip Antenna with SMA Male Connector, IP-Rated White Housing | SMA(M) |
| AANE-WH-0194-2 | 915/2450 MHz Weather-Proof Whip Antenna with RP-SMA Male Connector, IP-Rated White Housing | RP-SMA(M) |
| AANE-WH-0194-3 | 915/2450 MHz Weather-Proof Whip Antenna with SMA Male Connector, IP-Rated Black Housing | SMA(M) |
| AANE-WH-0194-4 | 915/2450 MHz Weather-Proof Whip Antenna with RP-SMA Male Connector, IP-Rated Black Housing | RP-SMA(M) |

Note: Different connector configurations that are not listed may be available upon request via [Abracon online support](#)



12117 Bee Caves Rd, Bldg-3, Suite 200 Bee
Cave, TX 78738
Phone: 512-371-6159 | Fax: 512-351-8858
For terms and conditions of sales, please visit:
www.abracon.com

REVISED: 09-01-25

ABRACON IS
ISO9001-2015
CERTIFIED

915/2450 MHz Weather-Proof Whip Antenna



AANE-WH-0194

Request Samples



Check Inventory

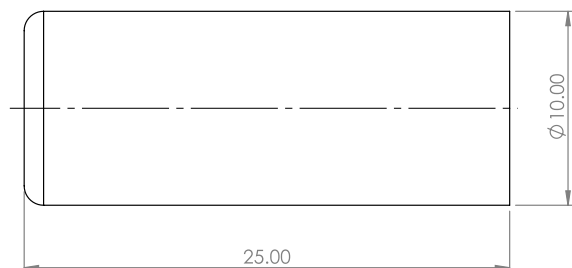


Ø10 x 25 mm

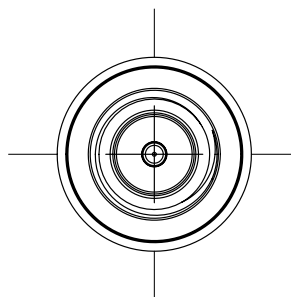
RoHS/RoHS II Compliant

MSL Level = N/A

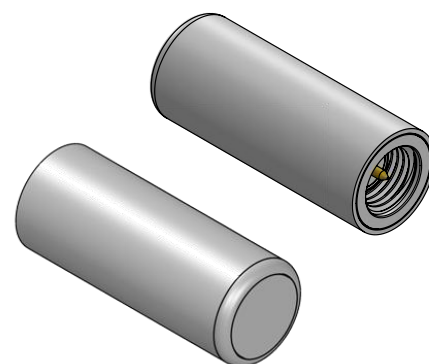
Product Dimension



FRONT VIEW



SIDE VIEW



Unit: mm

915/2450 MHz Weather-Proof Whip Antenna



AANE-WH-0194

Request Samples



Check Inventory

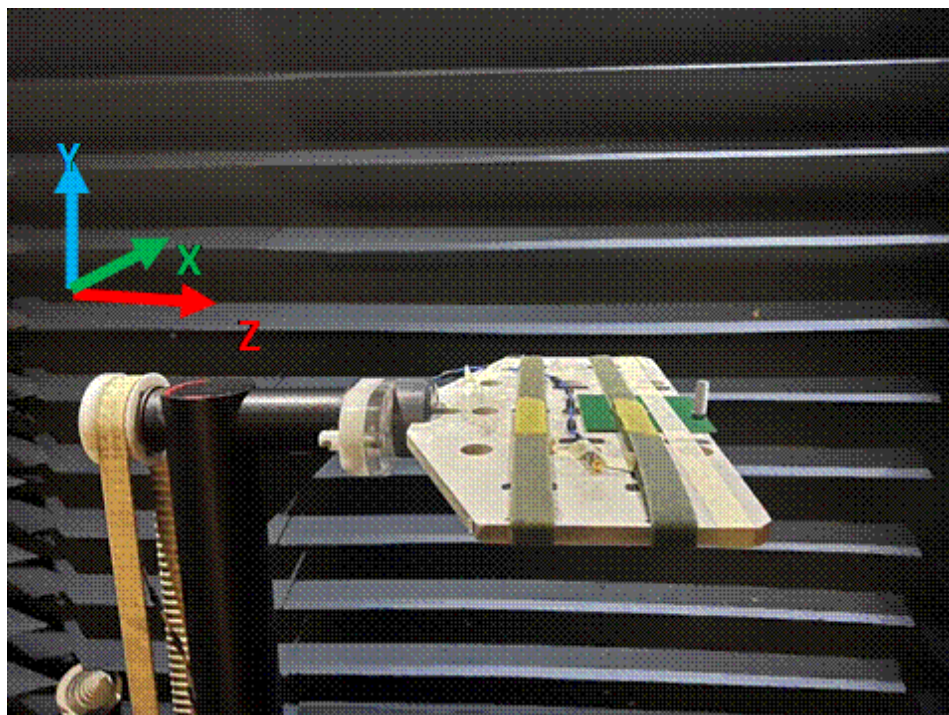


Ø10 x 25 mm

RoHS/RoHS II Compliant

MSL Level = N/A

Measurement Setup



Antenna measured on 102mm x 102mm GND plane

915/2450 MHz Weather-Proof Whip Antenna



AANE-WH-0194

Request Samples



Check Inventory

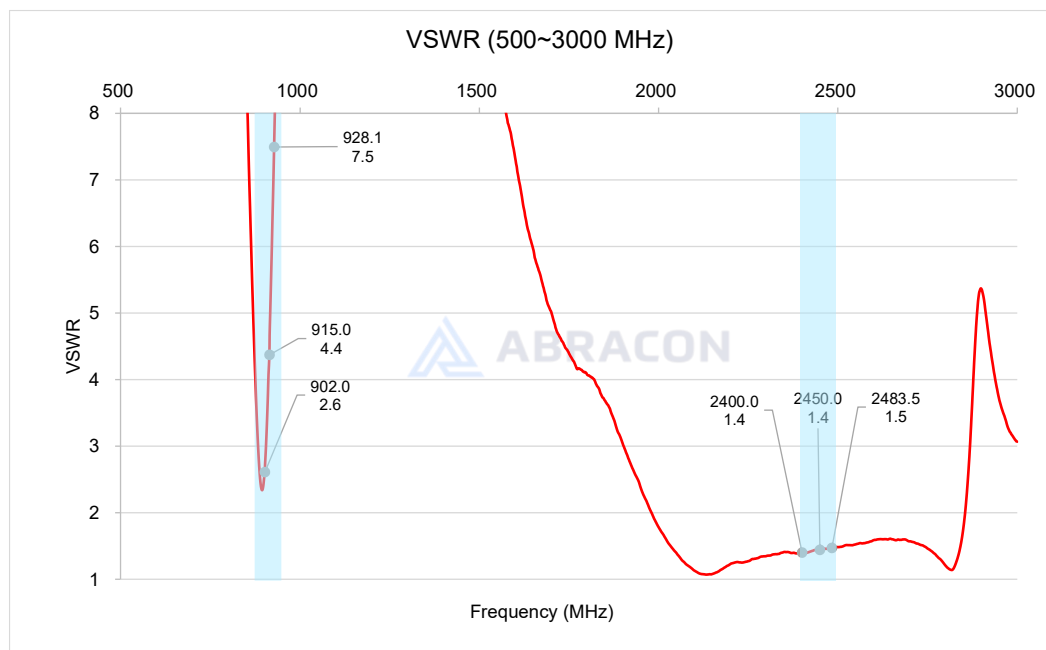
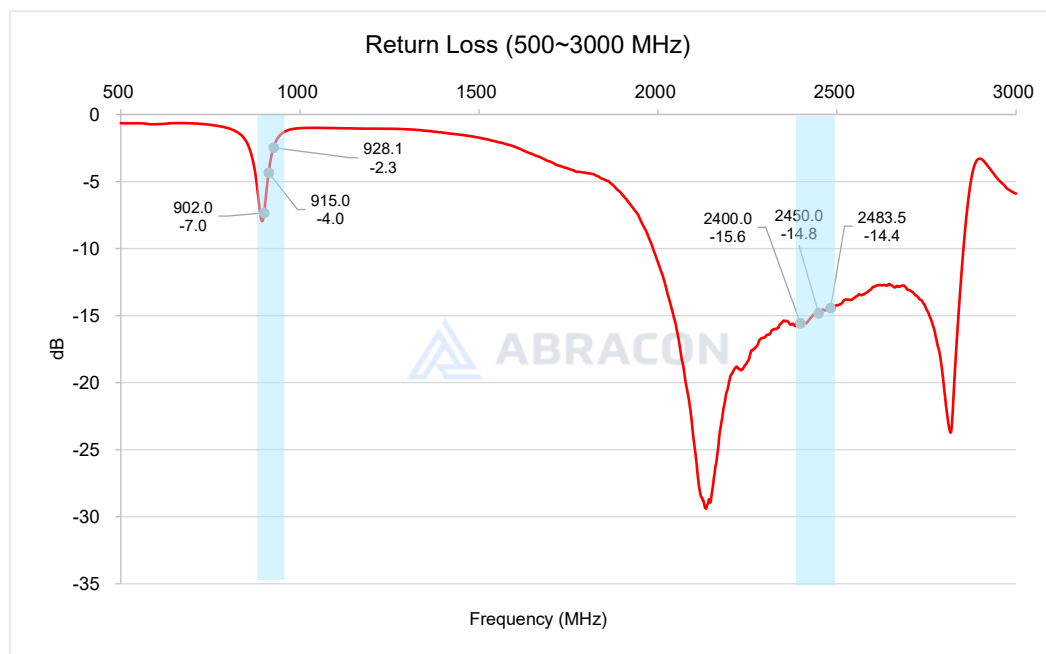


Ø10 x 25 mm

RoHS/RoHS II Compliant

MSL Level = N/A

Reflection Characteristics – Return Loss & VSWR



12117 Bee Caves Rd, Bldg-3, Suite 200 Bee
Cave, TX 78738
Phone: 512-371-6159 | Fax: 512-351-8858
For terms and conditions of sales, please visit:
www.abracon.com

REVISED: 09-01-25

ABRACON IS
ISO9001-2015
CERTIFIED

915/2450 MHz Weather-Proof Whip Antenna



AANE-WH-0194

Request Samples



Check Inventory

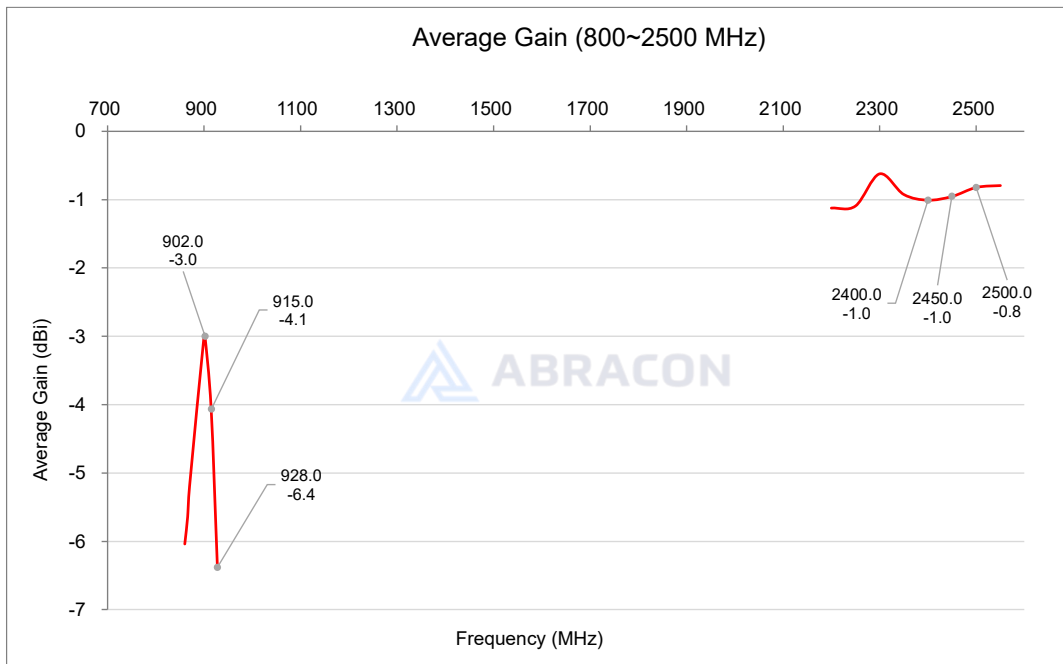
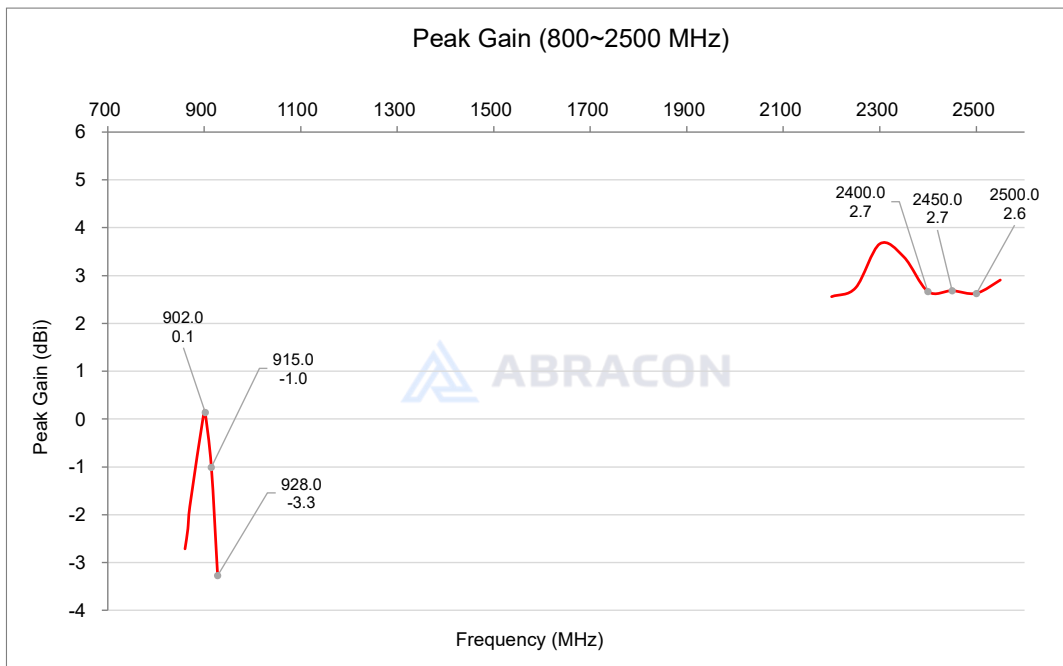


Ø10 x 25 mm

RoHS/RoHS II Compliant

MSL Level = N/A

Radiation Characteristics – Peak Gain & Average Gain



12117 Bee Caves Rd, Bldg-3, Suite 200 Bee Cave, TX 78738
Phone: 512-371-6159 | Fax: 512-351-8858
For terms and conditions of sales, please visit:
www.abracon.com

REVISED: 09-01-25

ABRACON IS
ISO9001-2015
CERTIFIED

915/2450 MHz Weather-Proof Whip Antenna



AANE-WH-0194

Request Samples



Check Inventory

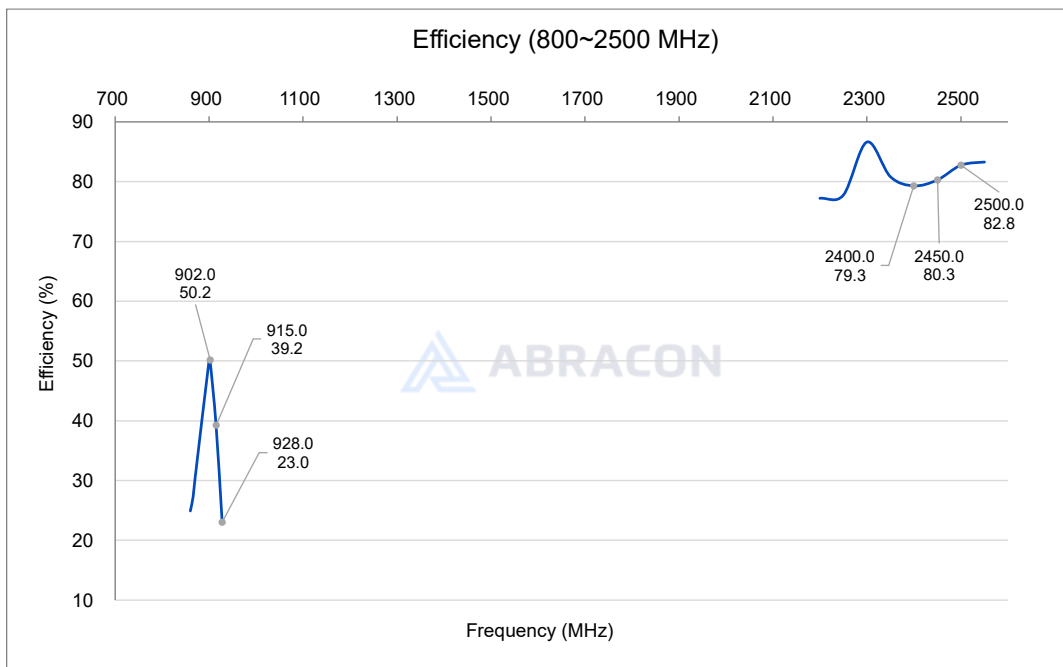


Ø10 x 25 mm

RoHS/RoHS II Compliant

MSL Level = N/A

Radiation Characteristics – Total Efficiency (%)



915/2450 MHz Weather-Proof Whip Antenna



AANE-WH-0194

Request Samples



Check Inventory



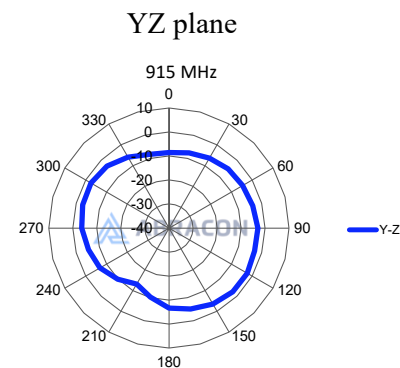
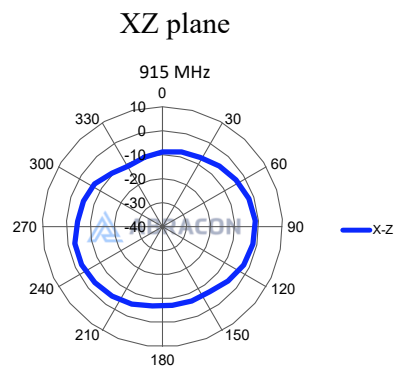
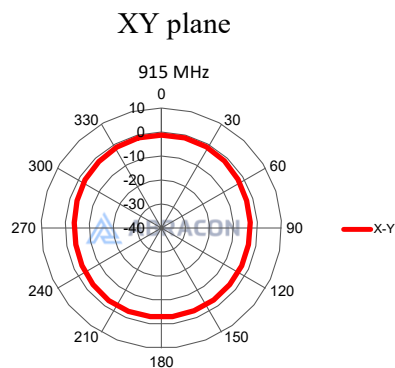
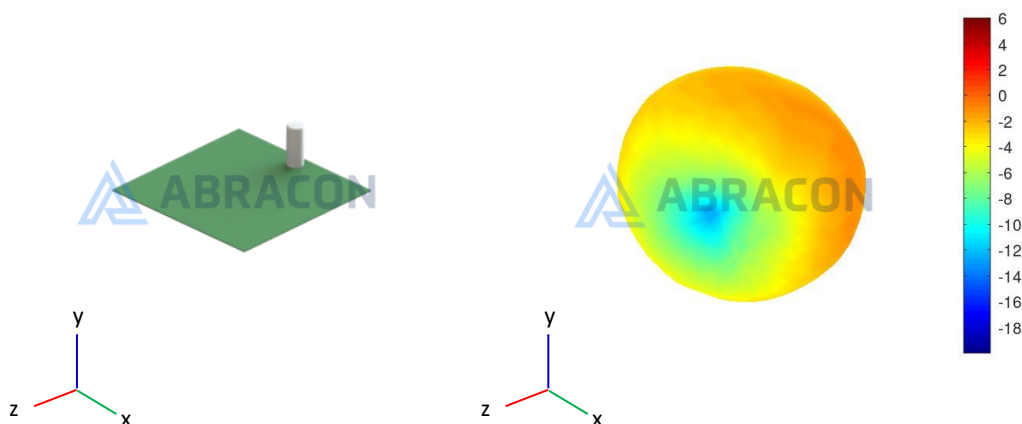
Ø10 x 25 mm

RoHS/RoHS II Compliant

MSL Level = N/A

Radiation Characteristics – 3D & 2D Pattern

915MHz



915/2450 MHz Weather-Proof Whip Antenna



AANE-WH-0194

Request Samples



Check Inventory

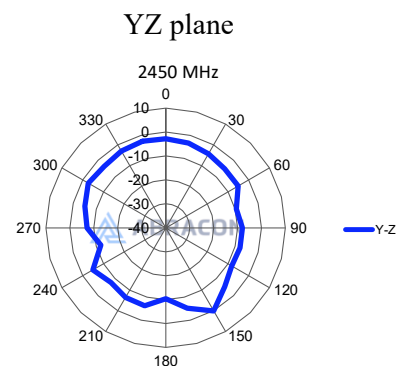
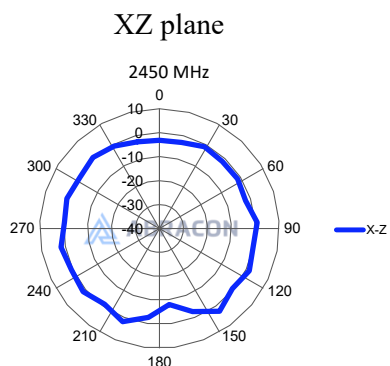
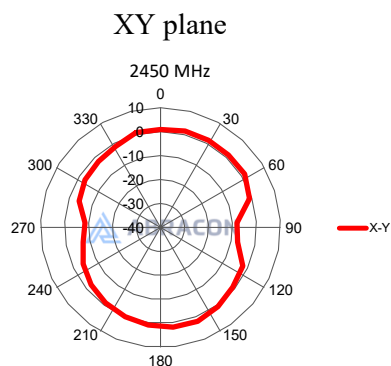
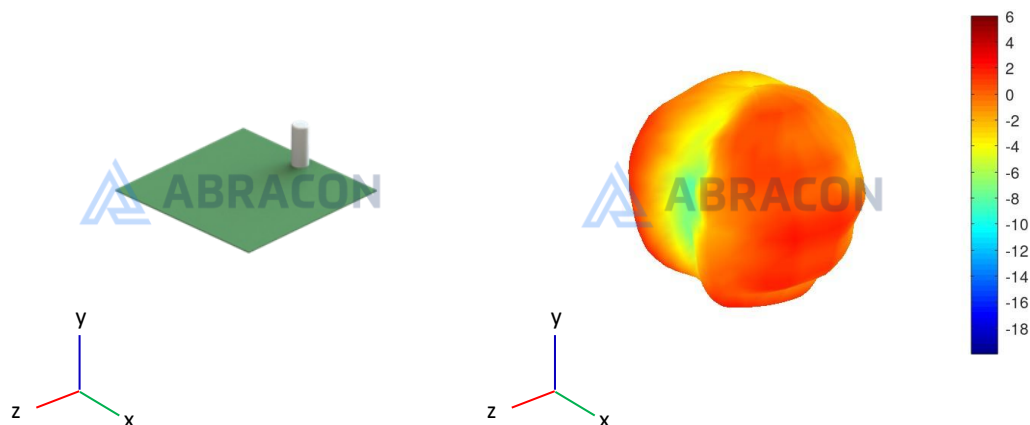


Ø10 x 25 mm

RoHS/RoHS II Compliant

MSL Level = N/A

2450MHz



915/2450 MHz Weather-Proof Whip Antenna



AANE-WH-0194

Request Samples



Check Inventory



Ø10 x 25 mm

RoHS/RoHS II Compliant

MSL Level = N/A

Packaging

Number of antennas / PE bag: 25 pcs

Number of PE bags / carton: 16

Total antennas / carton: 400 pcs

ATTENTION: Abracon LLC's products are Commercial-Off-The-Shelf ('COTS'), which are designed, intended, and validated for use in commercial, industrial, and automotive applications. The customer is responsible for testing and verifying the performance of an Abracon solution to meet their system-level requirements.



12117 Bee Caves Rd, Bldg-3, Suite 200 Bee
Cave, TX 78738
Phone: 512-371-6159 | Fax: 512-351-8858
For terms and conditions of sales, please visit:
www.abracon.com

REVISED: 09-01-25

ABRACON IS
ISO9001-2015
CERTIFIED