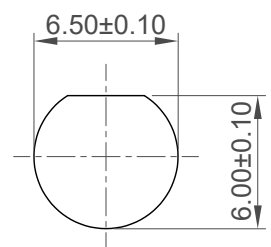


Recommended Mounting Hole

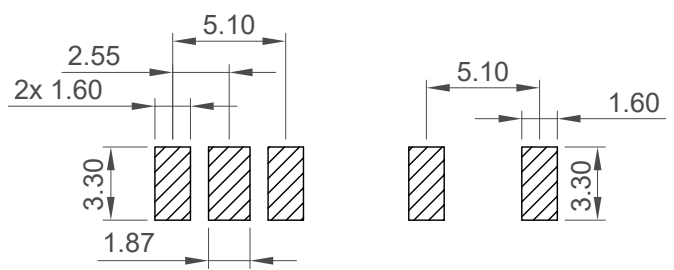


Top

Bottom

Recommended Foot Print

Tolerance: ±0.05



Specifications

Material

- Body: Brass, Gold Plated.
- Pin: Beryllium Copper, Gold Plated.
- Insulator: PTFE, White.
- O-ring: Silicone Rubber, Red.
- Washer: Brass, Gold Plated.
- Nut: Brass, Gold Plated.

Electrical

- Impedance: 50 Ohm
- Working Frequency Range: DC - 18GHz

Mechanical & Environmental

- Operating Temperature: - 55 °C to +125°C
- Ingress Protection Rating: IP67
- IP6x - Dust tight - no particle ingress.
- IPx7 Waterproof for 30 minutes up to 1m underwater. (mated with plug, the plug has inner gasket)
- Recommended PCB Thickness: 1.60mm.
- Other PCB thickness available on request

Ordering Grid

RFPC - SMA39 - FN - 180 - X [Request Samples and Quotation](#)

Washer and nut options:
A = All Assembled with Connector (Standard)
 Blank = Separately Packed

Part Number			Product Description		
RFPC-SMA39-FN			SMA Bulkhead Jack With O-ring, Edge Mount,		
Drawing Date			IP67, 18GHz		
21st February 2025					
By	CC	Tolerances (Except as Noted)		Units:	
Detail	Drawing Release	Length	Angle	Metric (mm)	
Revision	A	X.X ± 0.20	± 1°		
Date	21/02/25	X.XX ± 0.10			This drawing is confidential and copyright of Global Connector Technology, Ltd (GCT). This drawing must not be copied or disclosed without written consent. E & OE
			Not to Scale		Drawn By CC
					Sheet No. 1/1

