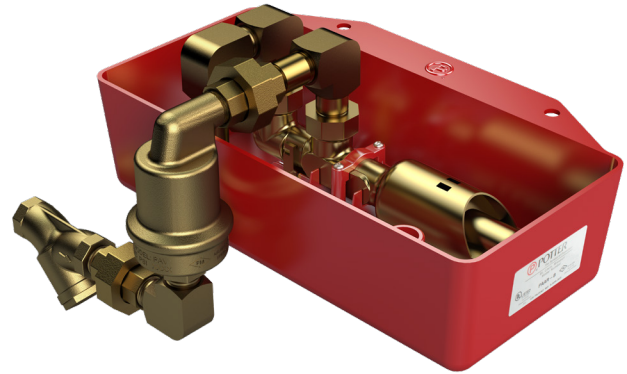


Features

- UL Listed for Fire Sprinkler Branch line applications per UL subject 2573—"Automatic Air Release Valves for Fire Protection Service"
- FM Approved for "Automatic Air Release Valve for Sprinkler Systems"
- Provides water retention pan and secondary positive stop shutoff valve eliminating any possibility of water discharge



Description

The PAAR-B is an automatic float type air vent used to reduce the amount of air trapped in a pressurized fire sprinkler system. Reducing the amount of air in a fire sprinkler system is essential to help protect the system piping from the effects of corrosion that is often found at the air/water interface in the fire sprinkler system piping.

Removing as much air as possible will also have a positive effect on the performance of vane type waterflow detectors. The operation of vane type waterflow detectors can be delayed or prevented if too much air is trapped in the system piping.

The intent of the product is to vent as much air from the fire sprinkler system as possible. The PAAR-B provides automatic venting of air as the system is being filled. Furthermore, trapped air can also be vented as the air in the system migrates to the vent location over time. The air vent will automatically close when water reaches the vent.

Discharge piping from the air vent valve is piped to a shutoff valve mounted in a water retention pan. The pan retains any inadvertent water that may discharge during the venting process. If failure of the air vent occurs, discharged water will reach a specified depth in the pan (approximately 1") and a water-soluble fiber element in the shutoff valve dissolves and closes the valve preventing further water discharge. The shutoff valve has a visual indication of operation and a single set of NC contacts rated 24V AC/DC@2A for electronic supervision (Recommended). The shutoff valve is a single-use device and contains no user serviceable parts.

The PAAR-B provides a 1/2" NPT connection in the bottom of the pan which can be used to pipe to a drain.

Technical Specifications

Service Pressure	Up to 175 PSIG
Environmental Limitations	Indoor Use Only 40°F to 120°F (4.5°C to 49°C)
PAV - Potter Air Vent	1/2" NPT inlet 5/64" Orifice UL Listed FM Approved Brass Construction
Water Shutoff Valve	Activation indicated by red pop-up tab on the shutoff valve. Single set of NC contacts rated 24V AC/DC at 2A (contacts open upon activation of shutoff valve) and 6' Lg. wiring harness supplied for supervision of shutoff valve.
Optional Accessories	Ball valve supervisory switch Model RBVS (Supervisory switch only). Used to monitor the position of the isolation valve.

*Specifications subject to change without notice.

Installation

NOTICE

- It is strongly recommended to install a ball valve in line with the PAV to assist in servicing the strainer without disabling the sprinkler system.
- The PAAR-B Automatic Shut off valve should be supervised and connected to the building's fire alarm. After notification of operation the control valve should be closed and remain closed until replacement parts are installed.

1. Read and understand the instructions provided before you proceed with installation. The PAAR-B shall be installed in accordance with local ordinances and the applicable NFPA13, NFPA13D, or NFPA13R standard.
2. The Engineer of Record should select the Model PAAR-B, Potter Automatic Air Release installation location. Usually at a point in the system that will vent the most air.
3. The location of the PAAR-B must not interfere with the spray pattern of any sprinkler head. The connection point must be off the top of the pipe. (See Fig. 2)
4. Install the PAAR-B in a level position at the recommended location of the sprinkler system. Use 3/8" threaded rod hangers thru the (2) holes provided in the flange of the pan for additional support.
5. If there are concerns about inadvertent water damage, remove the 1/2" NPT plug from the bottom of the water retention pan and make piping connection to drain.
6. For supervision of the shutoff valve activation, remove and discard the fuse cover from the shutoff valve terminals. Connect the supplied 6'-0" wiring harness connectors to the shutoff valve terminals and make appropriate connections to the fire alarm panel in an approved junction box. An "end of line resistor" (EOLR) must be installed according to the wiring diagram in Fig. 1.
7. Inspection of the PAAR-B should be performed after installation and filling of the sprinkler system and periodically thereafter in accordance with the applicable NFPA codes and standards and/or the authority having jurisdiction (manufacturer recommends quarterly or more frequently).

Note: Inspection shall include checking for activation of the shutoff valve indicated by the red pop-up tab and checking for blockage in the strainer before the air vent and in the cap screen on the outlet pipe. Remove the screens and flush with clean water. Use a wire brush to remove any particles trapped in the screens, if necessary.

PAV and Shutoff Valve Replacement

If inspection reveals activation of the shutoff valve, indicated by a red pop-up tab on the shutoff valve, the air vent valve has failed and must be replaced. The shutoff valve is a single-use device that can not be reset or repaired and must be replaced.

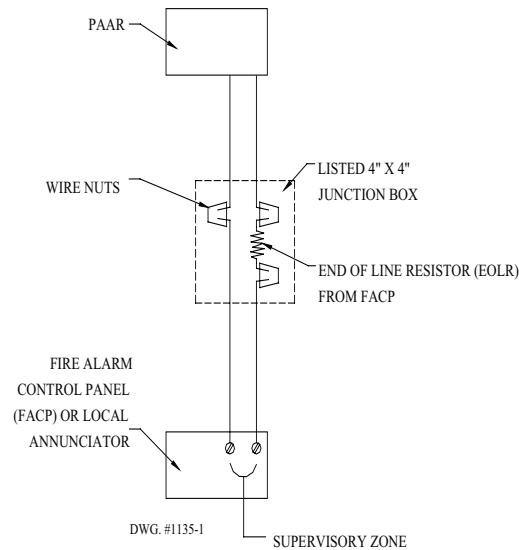
1. Close the ball valve installed between the PAAR-B and the sprinkler system.

2. If the automatic shutoff valve is electrically supervised, disconnect the electrical connections from the automatic shutoff valve.
3. Remove liquid tight grommet and carefully drain any water that may have collected inside the pan. Reinstall the grommet.
4. Disconnect the 1/2" union in the piping between the PAAR-B and the automatic shutoff valve from the retention pan.
5. Loosen the two screws from the clamp, disconnect any hanger supports and remove the pan from the vent.
6. Disconnect the 1/2" union located between the strainer and the vent and remove the vent.
7. Remove the piping from the existing vent; reinstall into the replacement vent and reconnect to the union.
8. Remove the 1/2" brass piping from the old activated shutoff valve and reinstall on the new shutoff valve using teflon tape on all connections. Be sure to match up the piping from the inlet (1 1/2" lg. nipple, elbow, close nipple and union) and outlet (1 1/2" lg. nipple, elbow, close nipple and 4" lg. nipple) of the old shutoff valve to the inlet and outlet of the new shutoff valve.
9. Reconnect the pan to the vent using the vent clamp. Make sure that the pan is square and level, reattach any hanger supports.
10. Place the shutoff valve into the retention pan and connect with the union provided. The shutoff valve must be installed straight and level in the retention pan. Adjust and secure the vent clamp in a manner that allows the shutoff valve to rest on the spacer bosses cast into the bottom of the pan.
11. Reconnect the wiring following the instructions provided in paragraph 2 under Installation Instructions and Fig. 1
12. Remove and clean the strainer screen by rinsing in clean water, use a wire brush if necessary, and reinstall.
13. Open the ball valve and check for proper operation of the air vent valve.
14. Inspection of the PAAR-B should be performed after installation and periodically thereafter in accordance with the applicable NFPA codes and standards and/or the authority having jurisdiction (manufacturer recommends quarterly or more frequently).

Note: Inspection shall include checking for activation of the shutoff valve indicated by the red Pop-up tab and checking for blockage in the strainer before the air vent and in the cap screen on the outlet pipe.

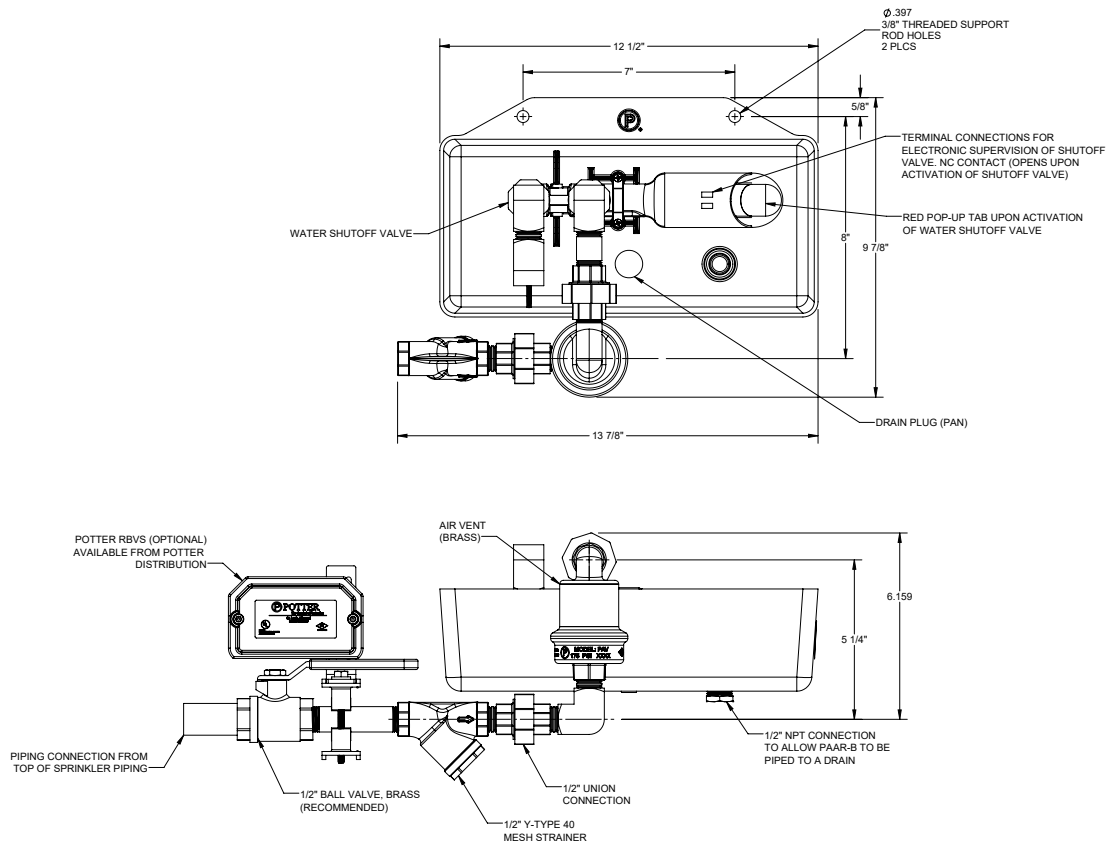
Wiring

Fig 1



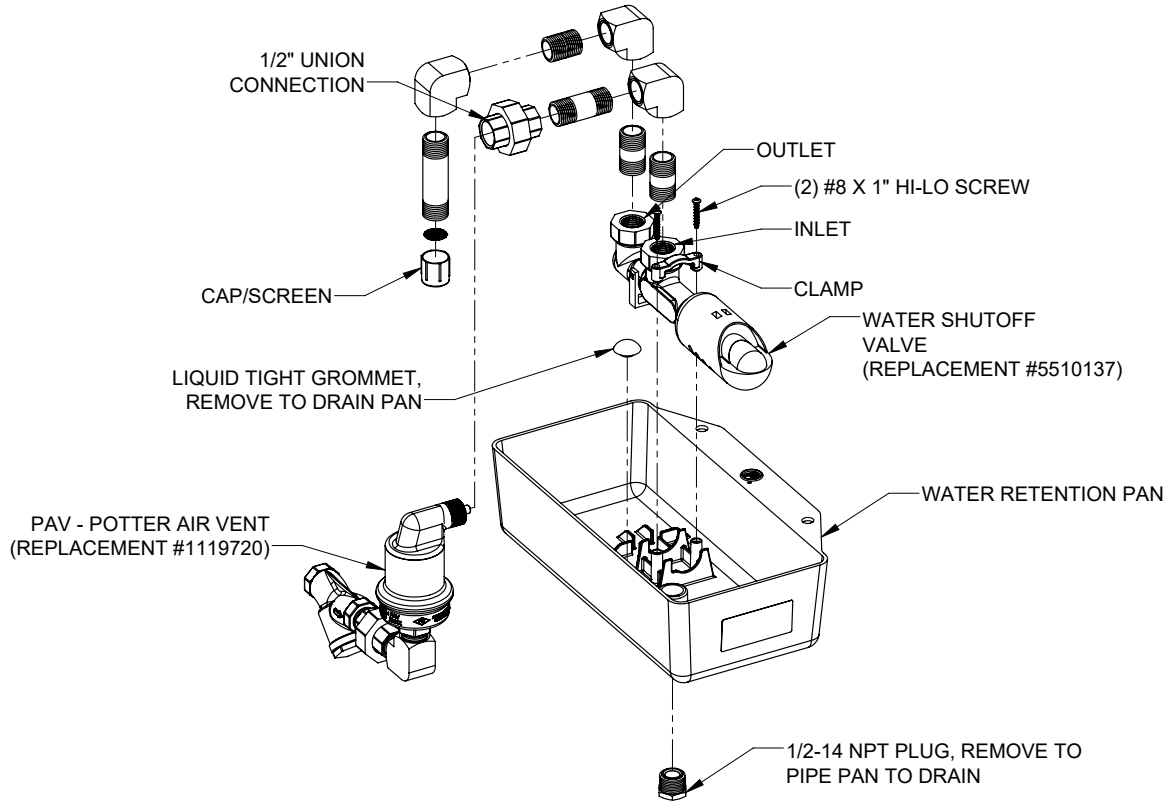
PAAR-B Outline Drawing

Fig 2



PAAR-B Assembly

Fig 3



Ordering Information

Model	Description	Part Number
PAAR-B	Potter Automatic Air Release	1030001
RBVS	Retrofit Ball Valve Switch	1000065
	RBVS Cover Tamper Kit	0090224
PAV	Potter Air Vent	1119720
	Shutoff valve	5510137