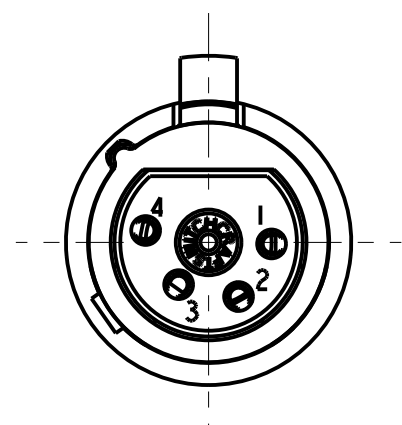
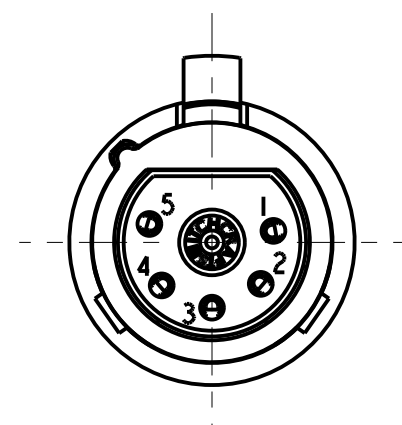


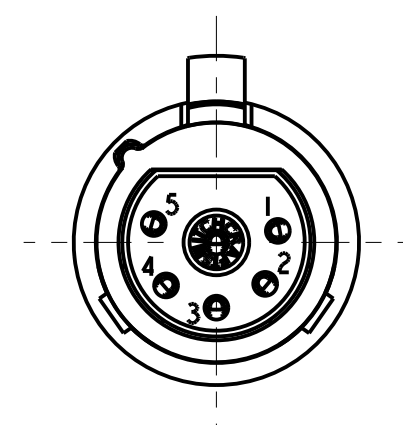
3 PIN



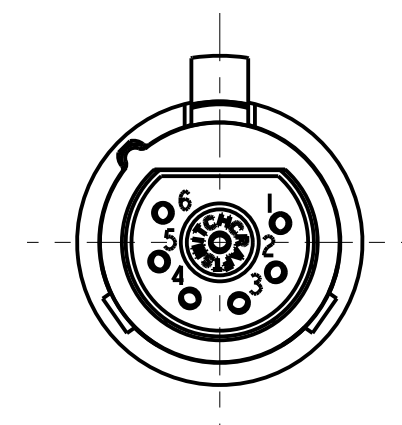
4 PIN



5 PIN



6 PIN



7 PIN

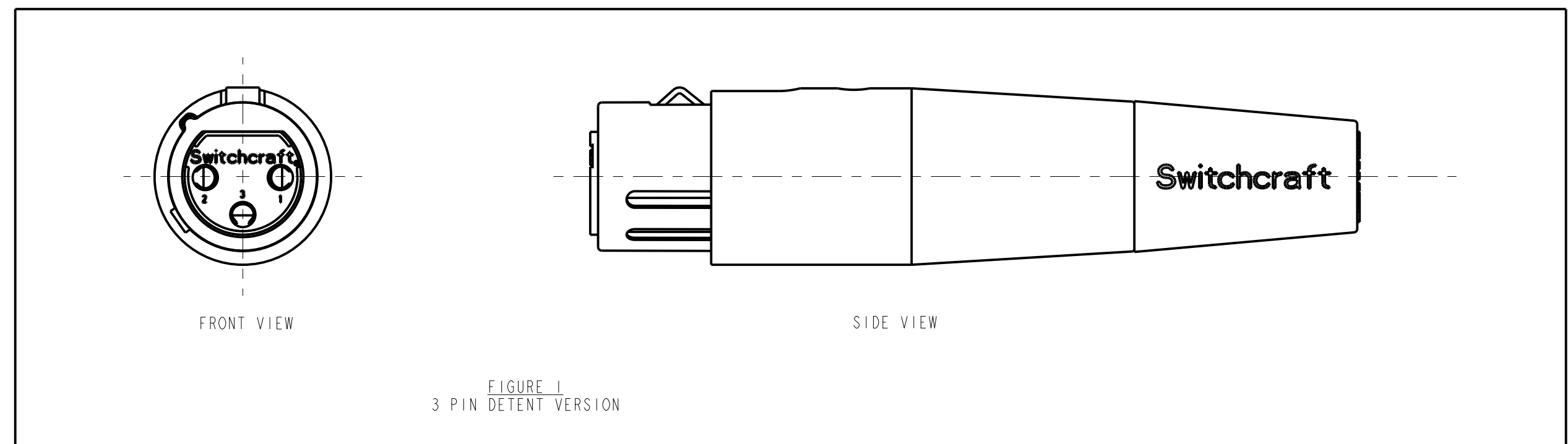


FIGURE 1
3 PIN DETENT VERSION

STANDARD SERIES

INSERT SCREW - STAINLESS STEEL
SHELL - STAINLESS STEEL
HOUSING - ZINC, NICKEL PLATED
LATCH BUTTON - ZINC, NICKEL PLATED
TUBULAR INSULATOR - MYLAR
INSULATOR - POLYESTER, GREEN OR BLACK
CABLE CLAMP - BRASS, ELECTRO TIN PLATED
FLEX RELIEF - HI-FAX, BLACK
LATCH SPRING - STAINLESS STEEL
CONTACTS - PHOSPHOR BRONZE, SILVER PLATED

- AA - F
- CONTACT PLATING
BLANK = SILVER (STANDARD)
AU = GOLD
- HOUSING FINISH SEE NOTE 2
BLANK = NICKEL PLATE (STANDARD)
BX = BLACK CHROME
- LATCH TYPE
BLANK = STANDARD LATCHLOCK
D = FAS-DIS-CONNECT DETENT (SEE FIGURE 1)
- FLEX RELIEF SIZE
BLANK = STANDARD SIZE (0.210 TO 0.300)
L = LARGE CABLES (0.300 TO 0.328)
S = SMALL CABLES (0.105 TO 0.205)
- NO. OF CONTACTS:
3 = 3 CONTACTS
4 = 4 CONTACTS
5 = 5 CONTACTS
6 = 6 CONTACTS
7 = 7 CONTACTS

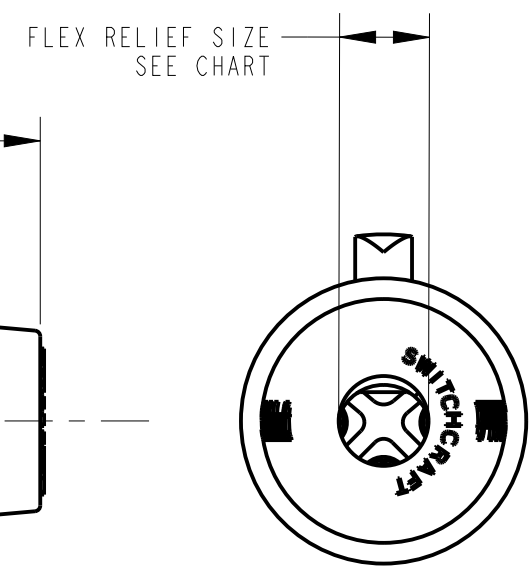
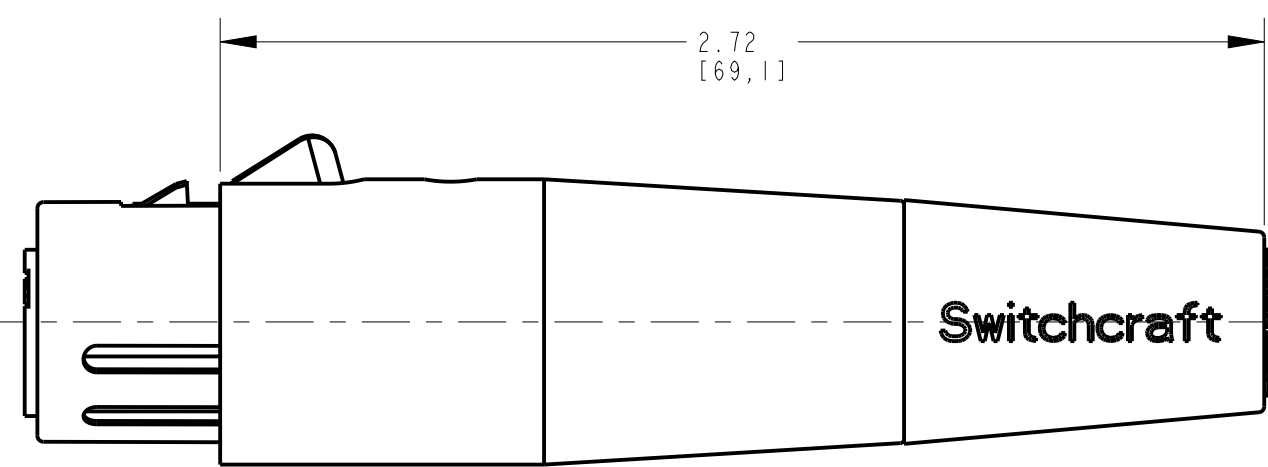
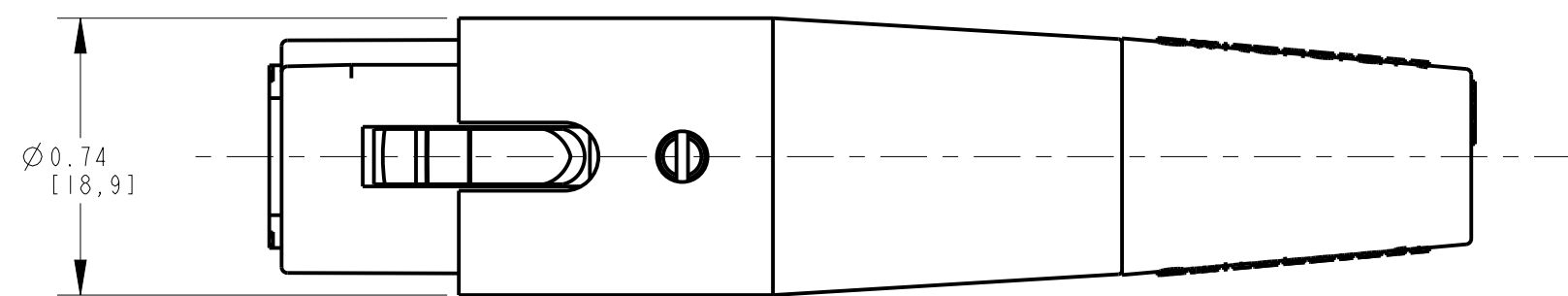
PROFESSIONAL SERIES

SAME AS ABOVE EXCEPT
CONTACTS - PHOSPHOR BRONZE, GOLD OVER NICKEL
HOUSING - NON-REFLECTIVE VEL-TONE FINISH
FLEX RELIEF - GRAY

- AQGP - 22
- NO. OF CONTACTS:
3 = 3 CONTACTS

NOTES:

1. ALL DIMENSIONS REFERENCE UNLESS OTHERWISE SPECIFIED.
2. BLACK HOUSING AND INSERT WITH SATIN NICKEL PLATED LATCH.
3. THIS PRODUCT IS RoHS COMPLIANT.



CUSTOMER DRAWING

T	28764	08-27-25	PC	TJK	<div>★ STAR SYMBOL DENOTES CRITICAL DIMENSION</div> <div>UNLESS OTHERWISE SPECIFIED</div> <div>1. ALL DIMENSIONS IN INCHES - TWO PLACE DECIMALS ±0.01 - THREE PLACE DECIMALS ±0.005 - FRACTIONAL DIMENSIONS ±1/64 - ANGLES ±1° - ALL DIA. CONCENTRIC WITHIN 0.005 T.I.R.</div> <div>2. FEATURES ON THE SAME CENTER LINE MUST BE ALIGNED WITHIN ±0.002</div> <div>3. REMOVE ALL BURRS</div> <div>DO NOT SCALE DRAWING</div>	THIS DRAWING DESCRIBES A DESIGN CONSIDERED PROPRIETARY IN NATURE, DEVELOPED AND MANUFACTURED BY SWITCHCRAFT INC. AND IS RELEASED ON A CONFIDENTIAL BASIS FOR IDENTIFICATION PURPOSES ONLY.					
S	28131	01-08-19	PC	TJK		SIZE	WIDTH		MULT	LBS/M	TEMPER
R	28046	07-05-18	PC	TJK		FINISH			MATERIAL		
P	26965	5-25-12	TO	TJK		SPEC No.			SPEC No.		
N	26158	10-4-06	TO	TJK		FIRST USED ON		SCALE		<div>Switchcraft®</div>	
M	21522	1-31-97	MM	RB		DATE DRAWN	BY	CHKD	APVD		
L	20762	12-4-96	MM	RB		8-Jul-94	SG	SG 1-19-95	GHJ 1-19-95	SHEET OF	
REV	ECO NUMBER	DATE	BY	APVD	NAME			PART No.		REV	
REVISIONS					AA SERIES FEMALE QG, RoHS			AA_F SERIES		T	